



**McEwan Fraser Legal**

Solicitors & Estate Agents

01333 400 400

18 Emsdorf Street

LUNDIN LINKS, KY8 6AB

18 EMSDORF STREET

LUNDIN LINKS, KY8 6AB

The area around Lundin Links, which is linked to the village of Lower Largo, boasts an excellent range of countryside, from rolling hills and pasture to miles of coastline and pretty East Neuk villages. It takes only 5 minutes to walk from 18 Emsdorf Street to the beach at the fishing village of Lower Largo.

Fife offers an excellent selection of restaurants and places to eat, serving award-winning local produce. It is renowned as one of Scotland's most magnificent and inspiring areas, providing something for everyone; whether that is enjoying adventure and exploration, relaxation, nature or history. It is extremely popular with holiday makers from all over the world. There are many holiday homes here. The area offers complete escapism. In addition to its variety of wildlife, there is a vast range of outdoor pursuits available in this part of Fife, including walking, cycling, golf, hiking, bird watching, water sports and cricket. Shooting and fishing are available on nearby estates. Tennis, squash and fitness facilities can be accessed at Lundin Sports Club. Nearby is the popular village bowling club. Lundin Links has both 18 and 9-hole golf courses. Three miles away, in Leven, there is a swimming pool and leisure centre.

The beaches of the East Neuk are superb. The Fife Coastal Path extends for 78 miles, from the Forth Bridges to the Tay Bridges. It passes near the village, with spectacular views along its route.

From Lundin Links, it is only a 20-minute drive to St Andrews, home of golf and the Old Course, and St Andrews University- Scotland's oldest academic institution. This old market town is steeped in

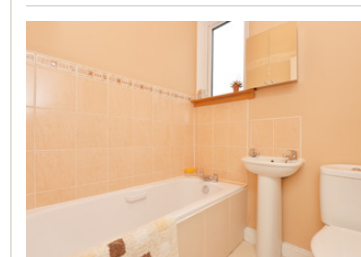
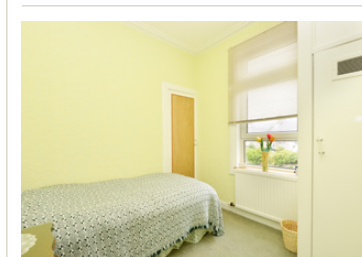
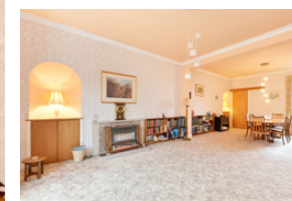
history, with castle, cathedral and former abbey, now a private school.

Lundin Links is 30 miles from Perth and 38 miles from Edinburgh, with railway stations nearby at Cupar, Markinch, Leuchars and Kirkcaldy. The village has a primary school, pharmacy, butcher/baker, grocer and other local shopping facilities.

Lower Largo is the home of Alexander Selkirk, portrayed as the fictional Robinson Crusoe in Daniel Defoe's novel of the same name. A statue of Robinson Crusoe is erected on the site of the home of Alexander Selkirk. Not far from the statue is the well-known Largo Bay Sailing Club, which attracts sailors from all over. The Crusoe Hotel is situated by Largo pier and offers a bistro, restaurant, pub and accommodation.

Part exchange is available. 18 Emsdorf Street sits just minutes from the beach in this ever-popular coastal destination. The house is laid over three floors and provides copious space, with rooms of elegant proportions. On the ground floor are the kitchen, sitting room, bedroom one, bathroom, larder and sun lounge. The first floor offers a spacious lounge/diner, bedrooms two and three, shower room and a butler's pantry or studio kitchen. The third floor is vast and is currently utilised as bedroom four, although there are many possible uses for this space.

Externally, there is a garden to the rear, with some storage and a garage – a prime advantage in the East Neuk of Fife. This is a home full of character, style, space and elegance.



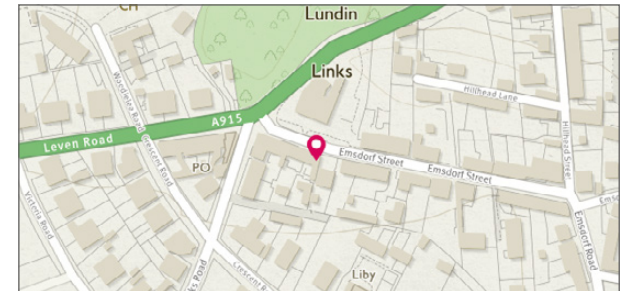
SPECIFICATIONS FLOOR PLAN, DIMENSIONS & MAP



Approximate Dimensions (Taken from the widest point)

Lounge/Diner	8.38m (27'6") x 4.77m (15'8")
Kitchen	3.31m (10'10") x 2.70m (8'10")
Conservatory	2.80m (9'2") x 1.88m (6'2")
Sitting Room	4.49m (14'9") x 3.87m (12'8")
Kitchenette	1.74m (5'8") x 1.67m (5'6")
Bedroom 1	4.31m (14'2") x 4.26m (14')
Bedroom 2	4.34m (14'3") x 3.75m (12'4")
Bedroom 3	3.27m (10'9") x 2.64m (8'8")
Bathroom	1.85m (6'1") x 1.59m (5'3")
Shower Room	2.31m (7'7") x 1.70m (5'7")
Attic Room	8.81m (28'11") x 7.51m (24'8")

Gross internal floor area (m²): 191m² | EPC Rating: E



McEwan Fraser Legal
Solicitors & Estate Agents

Tel. 01333 400 400
www.mcewanfraserlegal.co.uk
info@mcewanfraserlegal.co.uk

Part
Exchange
Available

Disclaimer: The copyright for all photographs, floorplans, graphics, written copy and images belongs to McEwan Fraser Legal and use by others or transfer to third parties is forbidden without our express consent in writing. Prospective purchasers are advised to have their interest noted through their solicitor as soon as possible in order that they may be informed in the event of an early closing date being set for the receipt of offers. These particulars do not form part of any offer and all statements and photographs contained herein are for illustrative purposes and are not guaranteed or warranted. Buyers must satisfy themselves for the accuracy and authenticity of the brochure and should always visit the property to satisfy themselves of the property's suitability and obtain in writing via their solicitor what's included with the property including any land. The dimensions provided may include, or exclude, recesses intrusions and fitted furniture. Any measurements provided are for guide purposes only and have been taken by electronic device at the widest point. Any reference to alterations to, or use of, any part of the property does not mean that any necessary planning, building regulations or other consent has been obtained. A buyer must find out by inspection or in other ways that all information is correct. None of the appliances/services stated or shown in this brochure have been tested by ourselves and none are warranted by our seller or MFL.



Text and description
JAYNE SMITH
Surveyor



Professional photography
MARK BRYCE
Photographer



Layout graphics and design
ALLY CLARK
Designer

Image credit: https://www.outlineagency.co.uk/company/