

Monadh Coille

NORTH ROAD, SALINE, DUNFERMLINE, FIFE, KY12 9UQ



*IMMACULATE THREE BEDROOM
BUNGALOW ON A GENEROUS SIZED PLOT*



01383 660 570



www.mcewanfraserlegal.co.uk



info@mcewanfraserlegal.co.uk

We are delighted to offer to the market this superb, three-bedroom detached house, situated within a popular residential area. Room dimensions are generous and the accommodation has been arranged to offer a high level of flexibility and individuality.

Once inside, you will be greeted with a first-class specification. In more detail, the accommodation comprises a hallway entrance with excellent storage space. The immediately impressive lounge has a large picture window with an open outlook to the front aspect, flooding the room with natural light.



The kitchen/diner is located to the rear and has been newly fitted to include a good range of floor and wall-mounted units with a striking worktop, providing a fashionable and efficient workspace. It further benefits from an integrated dish washer under the sink. A stand alone unit houses an integrated double oven, microwave, fridge freezer and pull out larder. Patio doors give access to the rear garden.







All three bedrooms are well-proportioned double bedrooms. The master bedroom offers built-in storage and bedroom 3 is currently being used as a utility room. A contemporary modern fully tiled four-piece family bathroom completes the impressive accommodation internally.





Bedroom 1

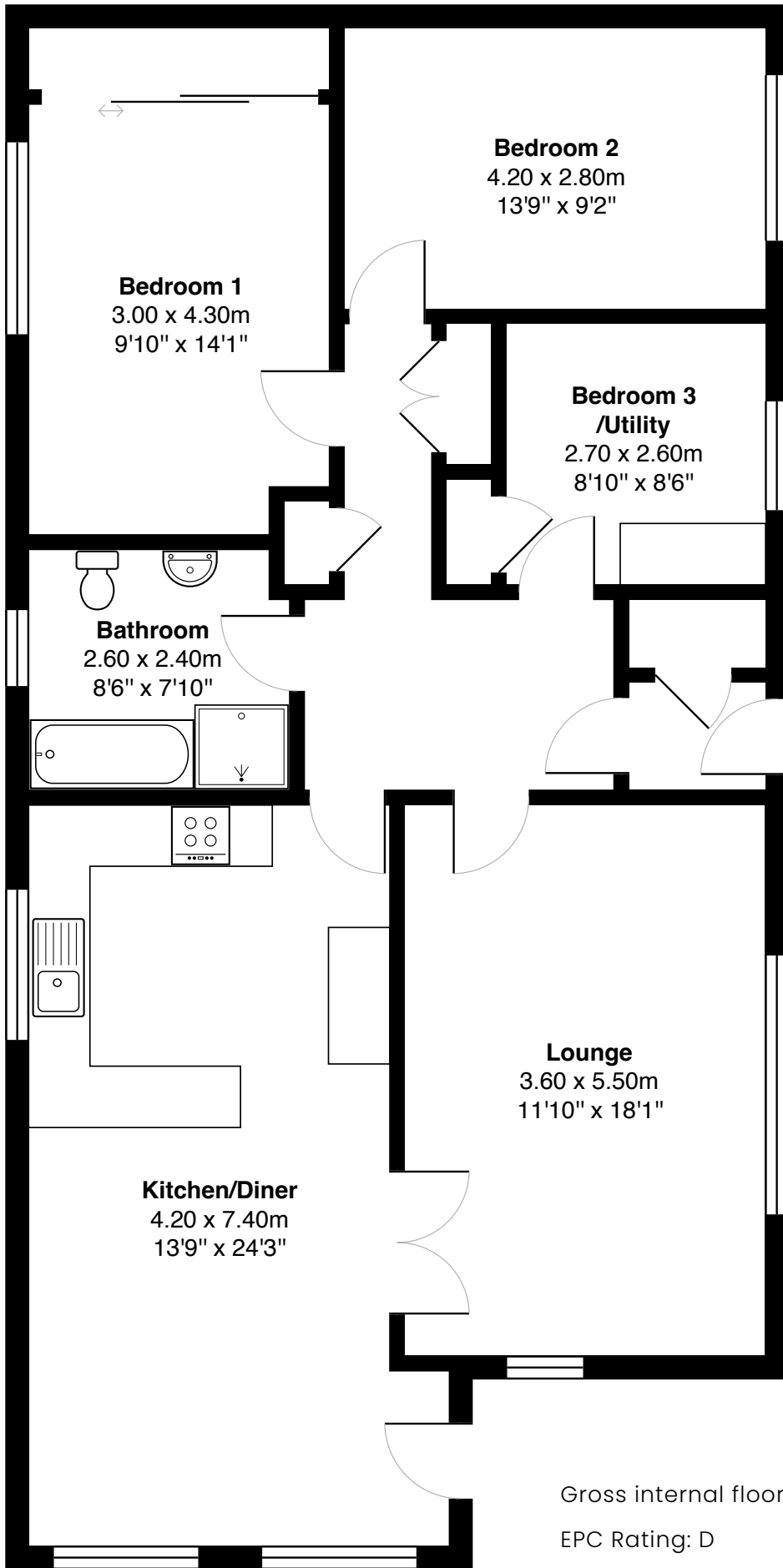




Bedroom 2







Gross internal floor area (m²): 102m²

EPC Rating: D

There are well-tended front and rear gardens. To the front of the property, there is a well-maintained private garden and a driveway providing off-road parking for ample vehicles. The rear garden is fully enclosed and provides a safe environment for children. A large double garage is to the rear of the garden and can be utilised for various uses.



The high specifications of this family home also benefit from double glazing and gas central heating throughout. This larger than average plot allows scope for extending after gaining the correct planning permission. Viewing is highly recommended to appreciate the accommodation on offer.



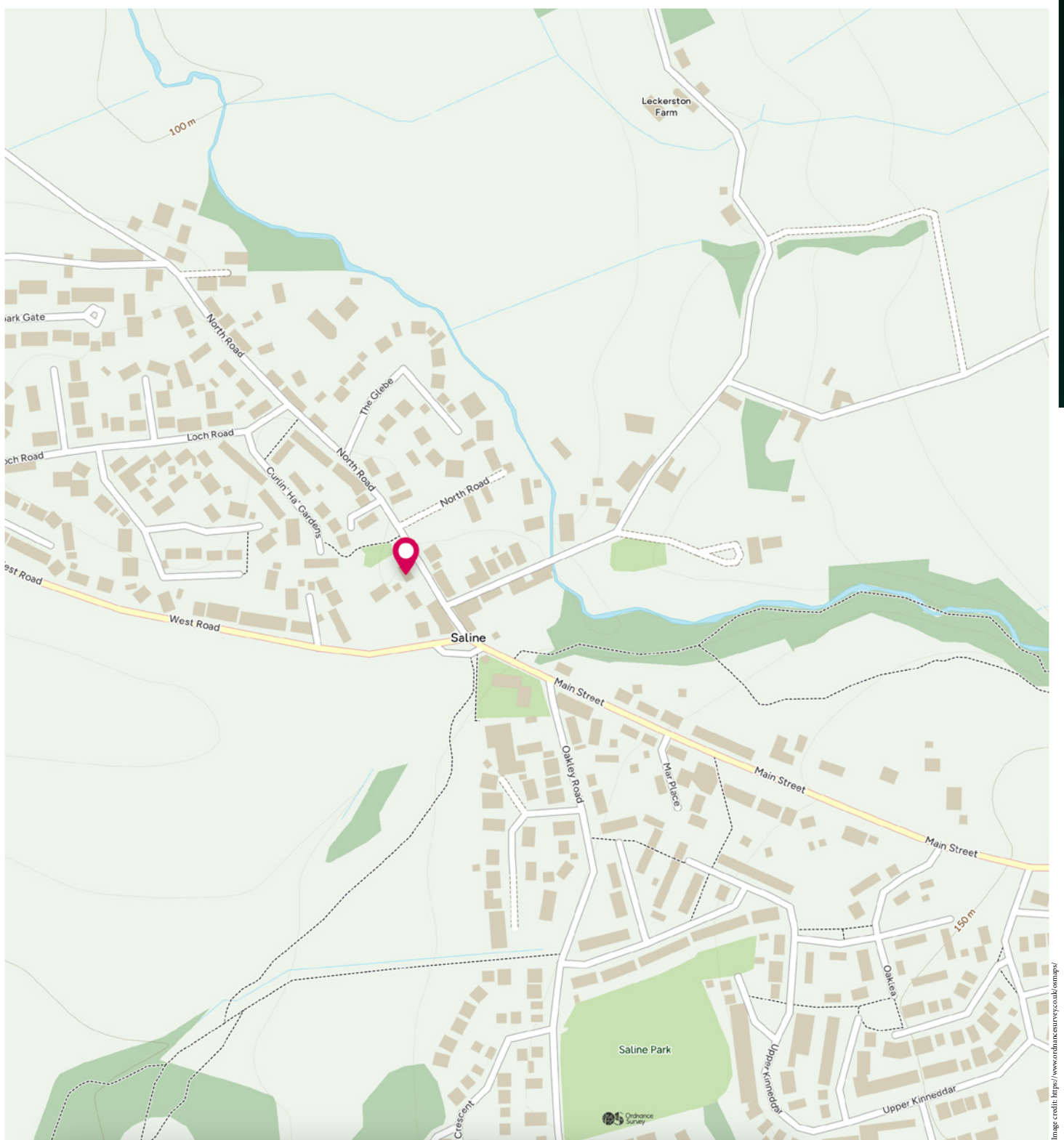


Image credit: <https://www.ordnancesurvey.co.uk/osmap/>

McEwan Fraser Legal

Solicitors & Estate Agents

Tel. 01383 660 570

www.mcewanfraserlegal.co.uk

info@mcewanfraserlegal.co.uk

Part
Exchange
Available



THE SUNDAY TIMES
THE SUNDAY TIMES



Text and description
JAY STEIN
Area Sales Manager



Professional photography
GRANT LAWRENCE
Photographer



Layout graphics and design
ALAN SUTHERLAND
Designer

Disclaimer: The copyright for all photographs, floorplans, graphics, written copy and images belongs to McEwan Fraser Legal and use by others or transfer to third parties is forbidden without our express consent in writing. Prospective purchasers are advised to have their interest noted through their solicitor as soon as possible in order that they may be informed in the event of an early closing date being set for the receipt of offers. These particulars do not form part of any offer and all statements and photographs contained herein are for illustrative purposes and are not guaranteed or warranted. Buyers must satisfy themselves for the accuracy and authenticity of the brochure and should always visit the property to satisfy themselves of the property's suitability and obtain in writing via their solicitor what's included with the property including any land. The dimensions provided may include, or exclude, recesses intrusions and fitted furniture. Any measurements provided are for guide purposes only and have been taken by electronic device at the widest point. Any reference to alterations to, or use of, any part of the property does not mean that any necessary planning, building regulations or other consent has been obtained. A buyer must find out by inspection or in other ways that all information is correct. None of the appliances/services stated or shown in this brochure have been tested by ourselves and none are warranted by our seller or MFL.