

15 High Street

BUCHANHAVEN, PETERHEAD, ABERDEENSHIRE, AB42 1NH



A very pretty two-bed cottage, updated to a high standard, and close to the sea



01224 472 441



www.mcewanfraserlegal.co.uk



info@mcewanfraserlegal.co.uk



A charming 19th-century, stone former fisherman's cottage, a short walk from the sea and a pretty former harbour. This lovely period cottage has been a cosy and comfortable home for our vendor for almost the last 14 years. The house is set over two floors, the ground floor offering the more extensive accommodation.

THE LOUNGE



Upon entering, your eye is drawn down the long hallway to the garden. To the immediate right is the cosy lounge, to the immediate left, a generous double bedroom.

BEDROOM 3



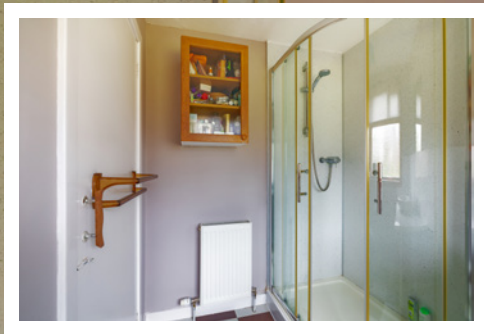
THE KITCHEN



Further along the hall is the kitchen, which has been refitted with solid wood worktops, overlooking the garden, space for a table and a skylight allowing light to pour in.



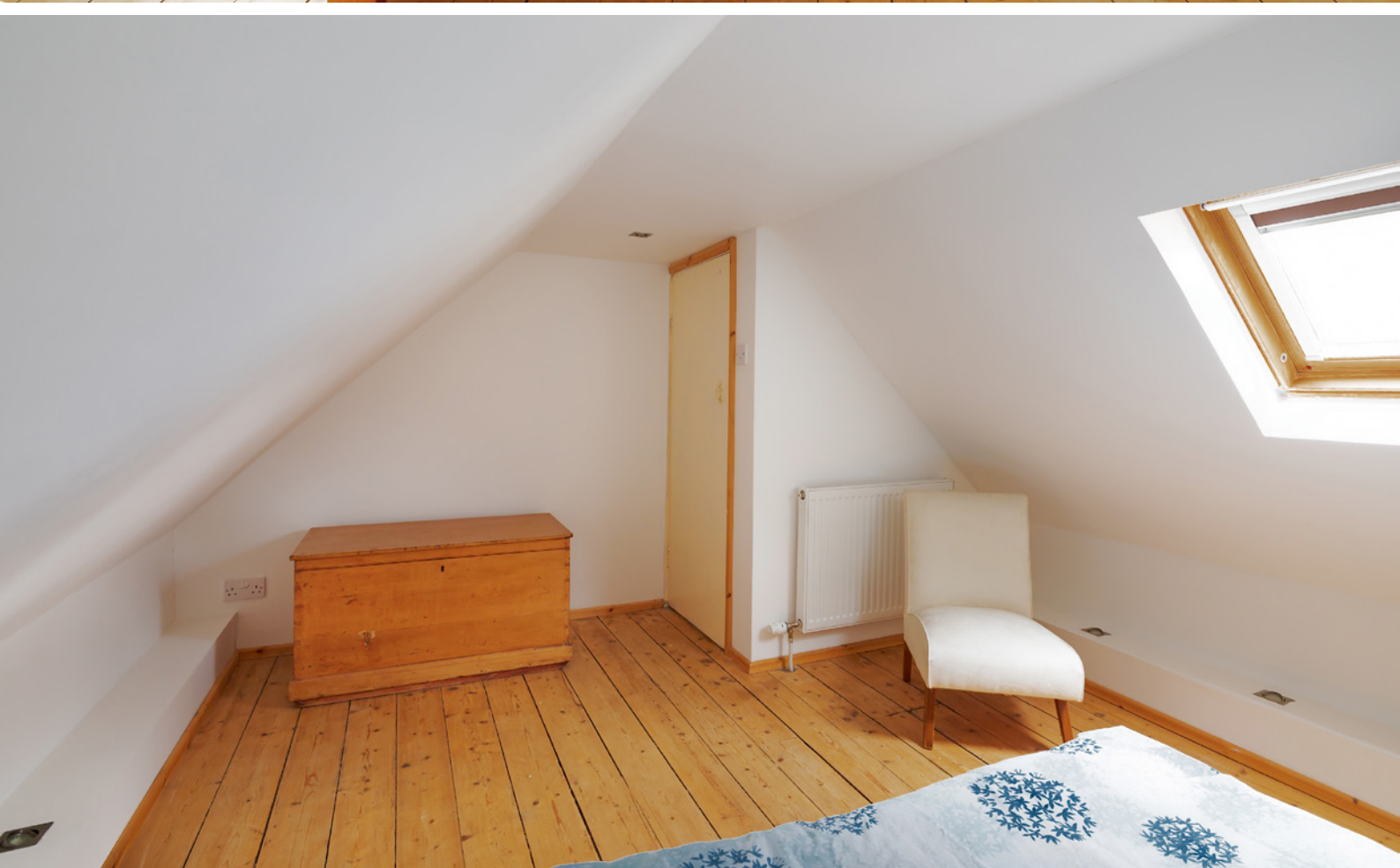
THE SHOWER ROOM



Also on the ground floor is the shower room, also refitted with modern fittings. On the first floor, there is another double bedroom and a study.



BEDROOM 1



BEDROOM 2

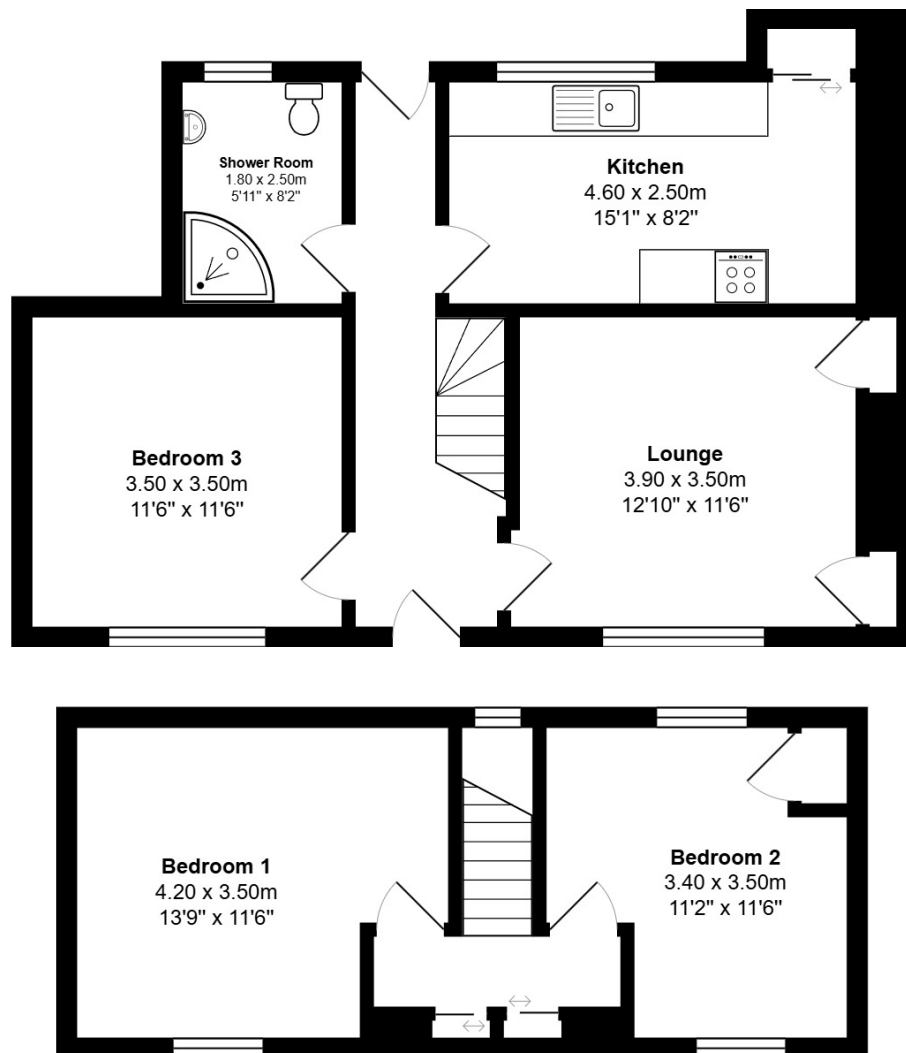


The garden to the rear is mostly walled, level and of a generous size. Formally, there was off-street parking at the rear, and this could easily be reinstated by removing a section of a wall. All in all, a very pretty cottage, updated to a high standard, and close to the sea.

EXTERNALS

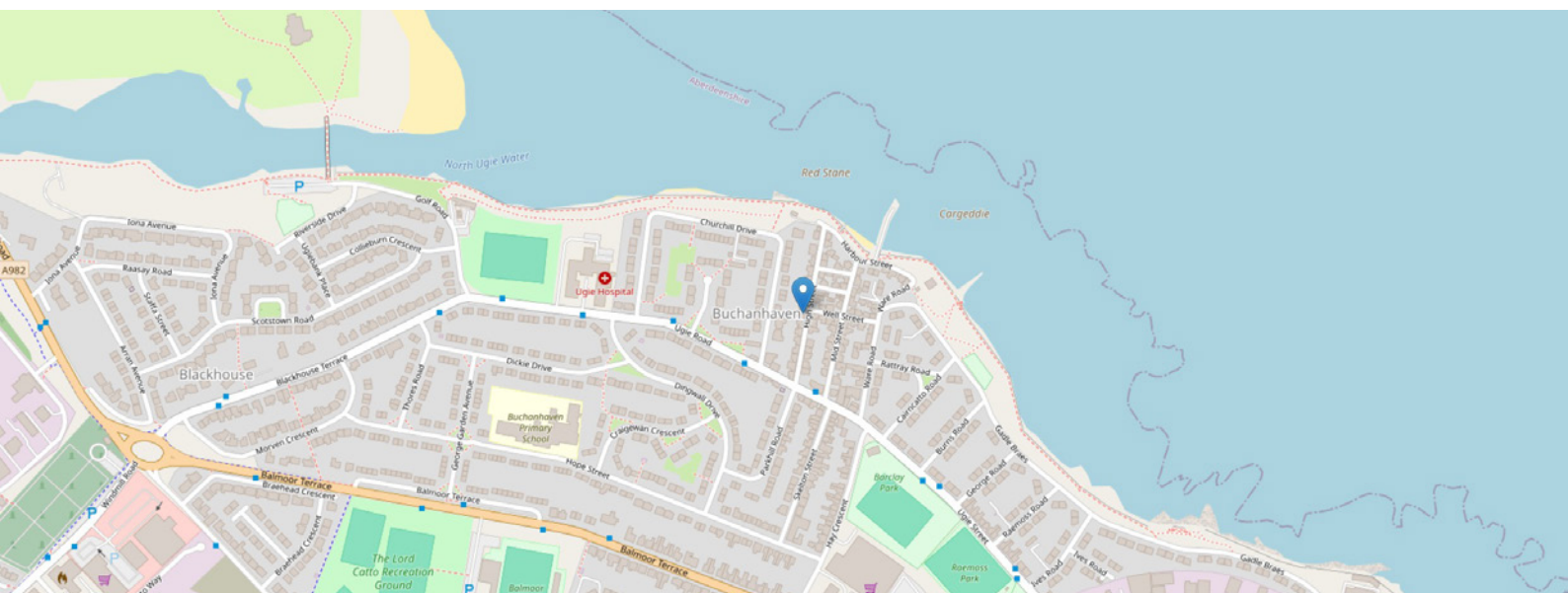


FLOOR PLAN, DIMENSIONS & MAP



Approximate Dimensions (Taken from the widest point)

Gross internal floor area (m²): 58m² | EPC Rating: D



THE LOCATION

The coastal town of Peterhead is steeped in history and is the largest town settlement in Aberdeenshire, with a population of approximately 18,500 residents. Founded in 1593, it developed as a port and functioned briefly as a fashionable 18th-century spa. By the early 19th century, it had become the chief British whaling centre for Scotland and is currently one of the largest White Fish markets in Europe. Buchanhaven is a historic coastal village situated approximately one mile north of Peterhead town centre in Aberdeenshire, Scotland. Established around 1739, it was originally a separate settlement but has since become integrated into the town of Peterhead. There are local shops and facilities within walking distance, and the sea is literally at the end of the road.





Peterhead is the most eastern port in Scotland with a thriving harbour and bustling fish market providing a service to the fishing, oil and gas, and other maritime industries. The town centre is a short distance from the property and provides all that one would expect from modern-day living, including a multitude of local shops, pubs, restaurants, eateries galore, and major supermarkets. There are NHS facilities available with a choice of primary schools, with higher education available at Peterhead Academy. You also have some superb recreational and leisure facilities all within easy reach, and a multitude of activities for the outdoor enthusiast.

The local area and the town offer a comprehensive bus service with the city of Aberdeen and Dyce Airport approximately 35 miles South of Peterhead and are easily commutable now that the Aberdeen Western Peripheral Route (AWPR) is open. The East Coast Rail network operates from Aberdeen, providing a link to the Central belt, the South, and beyond. National and International flights are provided from Dyce Airport.



McEwan Fraser Legal

Solicitors & Estate Agents

Tel. 01224 472 441

www.mcewanfraserlegal.co.uk

info@mcewanfraserlegal.co.uk

Part
Exchange
Available



Text and description
IAN HAINES
Surveyor



Professional photography
MICHAEL MORLEY
Photographer



Layout graphics and design
ALLY CLARK
Designer

Disclaimer: The copyright for all photographs, floorplans, graphics, written copy and images belongs to McEwan Fraser Legal and use by others or transfer to third parties is forbidden without our express consent in writing. Prospective purchasers are advised to have their interest noted through their solicitor as soon as possible in order that they may be informed in the event of an early closing date being set for the receipt of offers. These particulars do not form part of any offer and all statements and photographs contained herein are for illustrative purposes and are not guaranteed or warranted. Buyers must satisfy themselves for the accuracy and authenticity of the brochure and should always visit the property to satisfy themselves of the property's suitability and obtain in writing via their solicitor what's included with the property including any land. The dimensions provided may include, or exclude, recesses intrusions and fitted furniture. Any measurements provided are for guide purposes only and have been taken by electronic device at the widest point. Any reference to alterations to, or use of, any part of the property does not mean that any necessary planning, building regulations or other consent has been obtained. A buyer must find out by inspection or in other ways that all information is correct. None of the appliances/services stated or shown in this brochure have been tested by ourselves and none are warranted by our seller or MFL.