

275C Castlemilk Road

RUTHERGLEN, SOUTH LANARKSHIRE, G44 4LE



EXCEPTIONAL TWO-BEDROOM APARTMENT
IN SOUGHT-AFTER RUTHERGLEN



0141 404 5474



www.mcewanfraserlegal.co.uk



info@mcewanfraserlegal.co.uk





Jonny Clifford with McEwan Fraser Legal is delighted to present this simply stunning two-bedroom apartment. Occupying a desirable position within a well-maintained, modern development, this superb two-bedroom apartment in Rutherglen is presented to the market in true turnkey condition. With its generous proportions, high-quality finishes, and thoughtful layout, this home offers a rare combination of style, comfort, and practicality, ideal for first-time buyers, professionals, or those looking to downsize in elegance.

At the heart of the home is a striking open-plan living, dining, and kitchen area, a space that truly sets the tone for the rest of the apartment. Framed by expansive picture windows, the room is flooded with natural light and offers a glorious open outlook, giving the space an uplifting and airy ambience throughout the day.

The Property





The kitchen itself is sleek and modern, with ample cabinet space, integrated appliances, and a layout designed to blend seamlessly into the wider living space. It's the perfect setting for both quiet evenings at home and entertaining guests.





The apartment features two generously sized double bedrooms, both tastefully decorated in neutral, calming tones. The principal bedroom is a true highlight, complete with a contemporary en-suite shower room, finished to a high standard with crisp tiling and quality fittings.







The second bedroom is equally spacious, ideal as a guest room, home office, or even a dressing room, depending on your needs.





The main bathroom is particularly impressive, larger than average, it features stylish cabinetry, a full-sized bath, rainfall shower, and plenty of room to relax and unwind. Its contemporary finish and well-thought-out design give it a hotel-like feel, offering a calm, spa-inspired retreat at the end of the day.





One of the most notable features of this apartment is the abundance of storage throughout. From the hallway cupboards to the integrated wardrobes, and a storage area below the full floor area of the flat. Every detail has been considered to keep the space as functional as it is beautiful, a rarity in modern apartments.



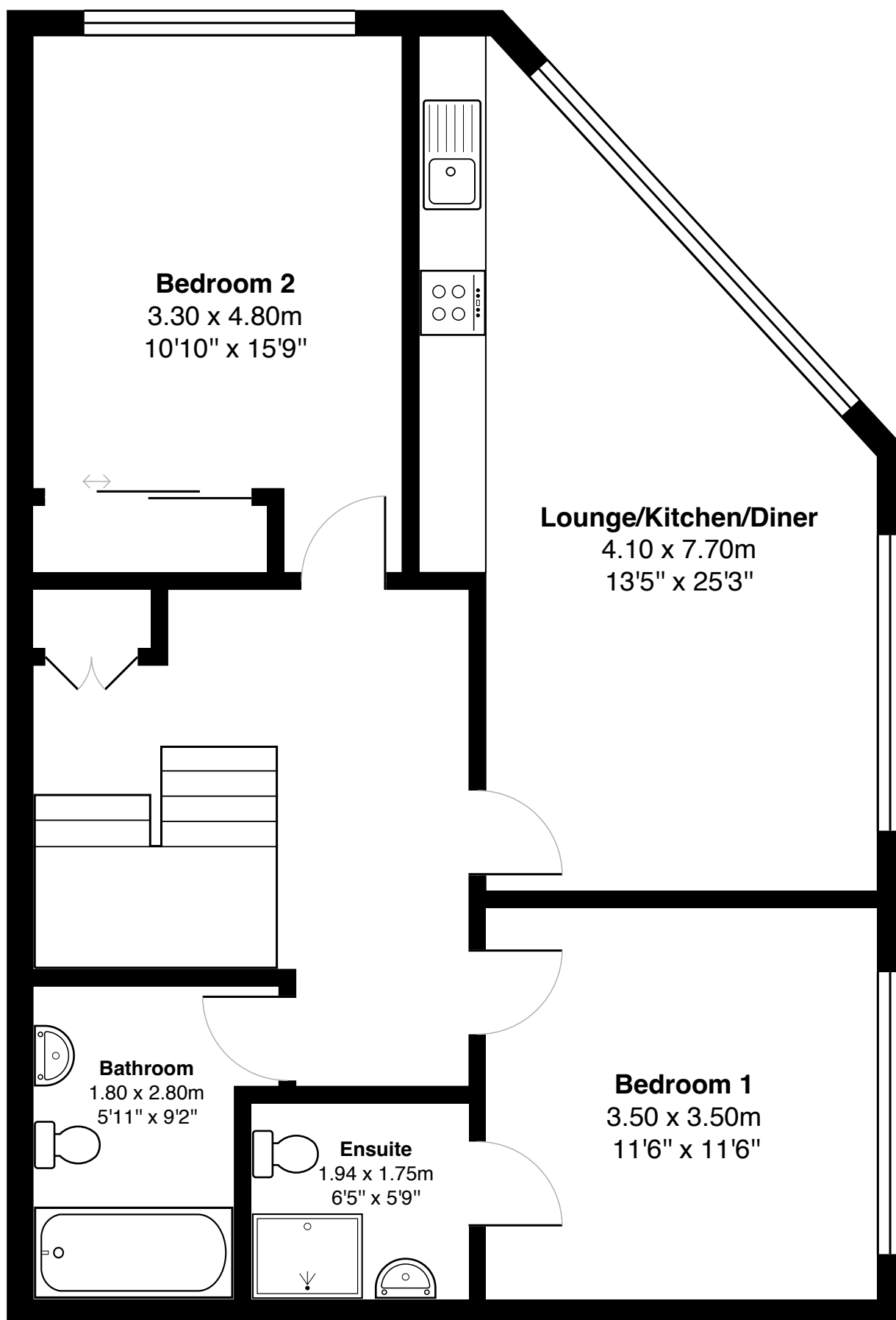


ADDITIONAL BENEFITS INCLUDE:

- Secure entry system for peace of mind
- Well-maintained communal areas
- On-street parking
- Gas central heating and double glazing throughout

With its combination of immaculate presentation, elegant open-plan living, two double bedrooms, and a bright, spacious feel throughout, this outstanding Rutherglen apartment is a true standout. Whether you're looking for a peaceful place to call home or a smart buy-to-let investment in a popular, well-connected location, this property offers both lifestyle and long-term value.

Early viewing is essential to appreciate everything this exceptional apartment has to offer fully.



Gross internal floor area (m²): 80m²

EPC Rating: C



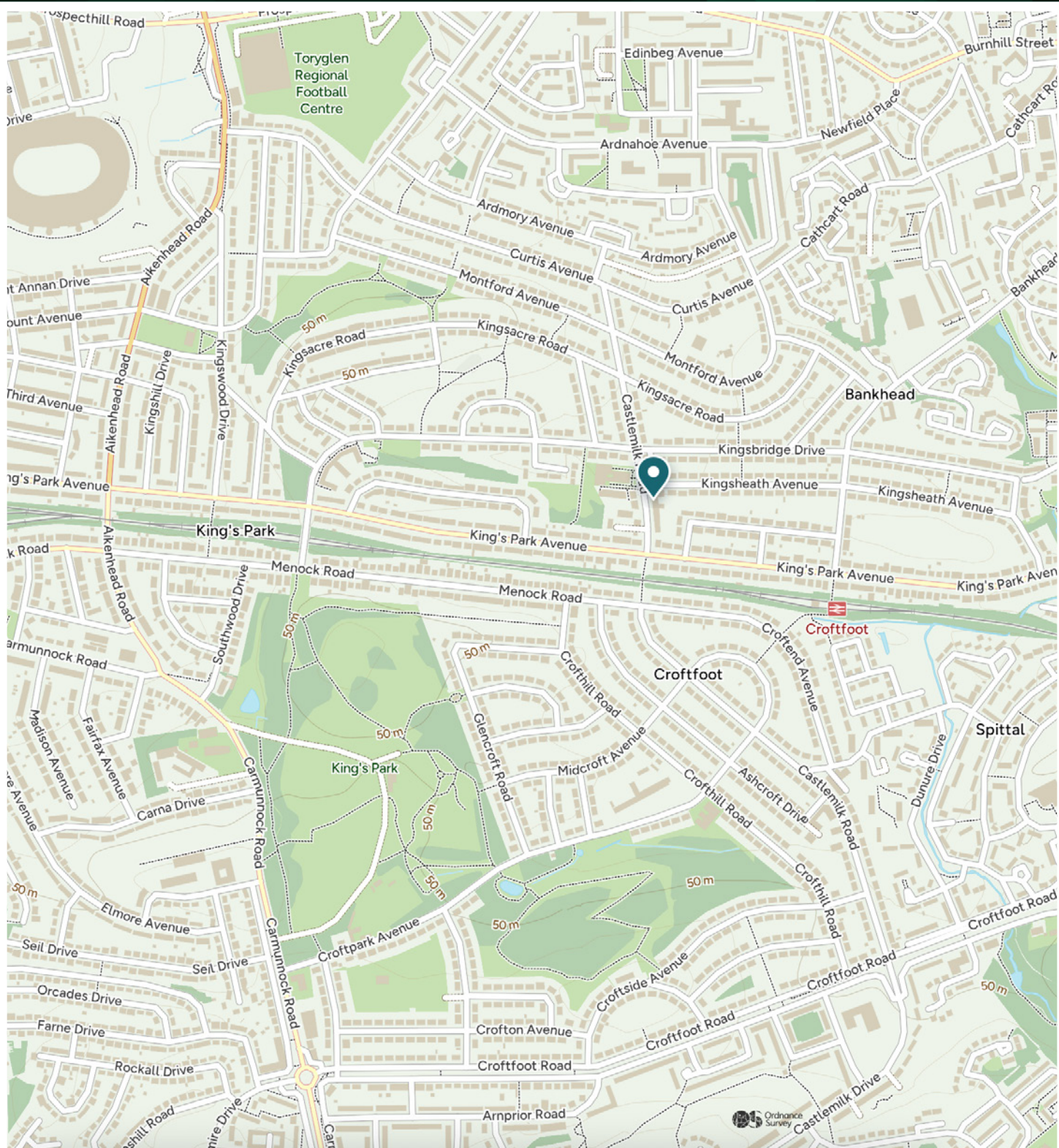
KINGS PARK

Situated within walking distance of local shops, cafes, supermarkets, and excellent transport links, the location offers easy access to Rutherglen town centre, Glasgow City Centre, and beyond. Parks, leisure facilities, and reputable schools are also nearby, making it an appealing location for a wide range of buyers.

Rich in history and increasingly popular with homebuyers, Rutherglen is one of Glasgow's most established and well-connected suburban communities. Once a royal burgh, this sought-after area blends charming traditional character with modern convenience, making it a fantastic place to call home for professionals, families, and downsizers alike.

Rutherglen offers excellent transport links, including its own train station, frequent bus services, and easy access to the M74 and M8 motorways, ideal for commuters. Despite its proximity to the city, Rutherglen retains a relaxed, neighbourly feel, with tree-lined streets, green spaces, and a thriving local community.

The Location



McEwan Fraser Legal

Solicitors & Estate Agents

Tel. 0141 404 5474

www.mcewanfraserlegal.co.uk

info@mcewanfraserlegal.co.uk

Part
Exchange
Available



Text and description
JONNY CLIFFORD
Surveyor



Professional photography
CRAIG DEMPSTER
Photographer



Layout graphics and design
ALAN SUTHERLAND
Designer

Disclaimer: The copyright for all photographs, floorplans, graphics, written copy and images belongs to McEwan Fraser Legal and use by others or transfer to third parties is forbidden without our express consent in writing. Prospective purchasers are advised to have their interest noted through their solicitor as soon as possible in order that they may be informed in the event of an early closing date being set for the receipt of offers. These particulars do not form part of any offer and all statements and photographs contained herein are for illustrative purposes and are not guaranteed or warranted. Buyers must satisfy themselves for the accuracy and authenticity of the brochure and should always visit the property to satisfy themselves of the property's suitability and obtain in writing via their solicitor what's included with the property including any land. The dimensions provided may include, or exclude, recesses intrusions and fitted furniture. Any measurements provided are for guide purposes only and have been taken by electronic device at the widest point. Any reference to alterations to, or use of, any part of the property does not mean that any necessary planning, building regulations or other consent has been obtained. A buyer must find out by inspection or in other ways that all information is correct. None of the appliances/services stated or shown in this brochure have been tested by ourselves and none are warranted by our seller or MFL.