

# 58 Whitehouse Crescent

GOREBRIDGE, MIDLOTHIAN, EH23 4FT



*SUPERB FIRST TIME BUY WITH TWO DOUBLE BEDROOMS, PRIVATE GARDEN AND PARKING*



0131 524 9797



[www.mcewanfraserlegal.co.uk](http://www.mcewanfraserlegal.co.uk)



[info@mcewanfraserlegal.co.uk](mailto:info@mcewanfraserlegal.co.uk)





---

McEwan Fraser is delighted to present this superb two-bedroom end-terraced house to the market. Beautifully presented throughout, the property is offered in excellent internal condition and would make an ideal first-time purchase or starter home. Key features include gas central heating, double glazing, a generous southwest-facing rear garden, and an allocated off-street parking space to the front.

The internal accommodation is centred around a bright and spacious living room which is tastefully finished in neutral tones, creating a welcoming and versatile space for both everyday living and entertaining. A door from the rear of the living room leads through to a contemporary breakfasting kitchen, fitted with a range of base and wall-mounted units that provide excellent storage and preparation space.

The kitchen is equipped with an integrated gas hob and electric oven, while additional space is provided for a free-standing fridge freezer and washing machine. There is also room for a breakfast table, making this a practical and sociable area. The ground floor further benefits from a convenient two-piece WC and useful under-stair storage.

---









Upstairs, the property offers two well-proportioned double bedrooms, both finished in neutral décor and fitted with carpeting for comfort. The front-facing principal bedroom is particularly spacious. There is an integrated wardrobe and ample space for supporting furniture. The second bedroom enjoys views over the rear garden and benefits from a further large integrated wardrobe with mirrored doors.

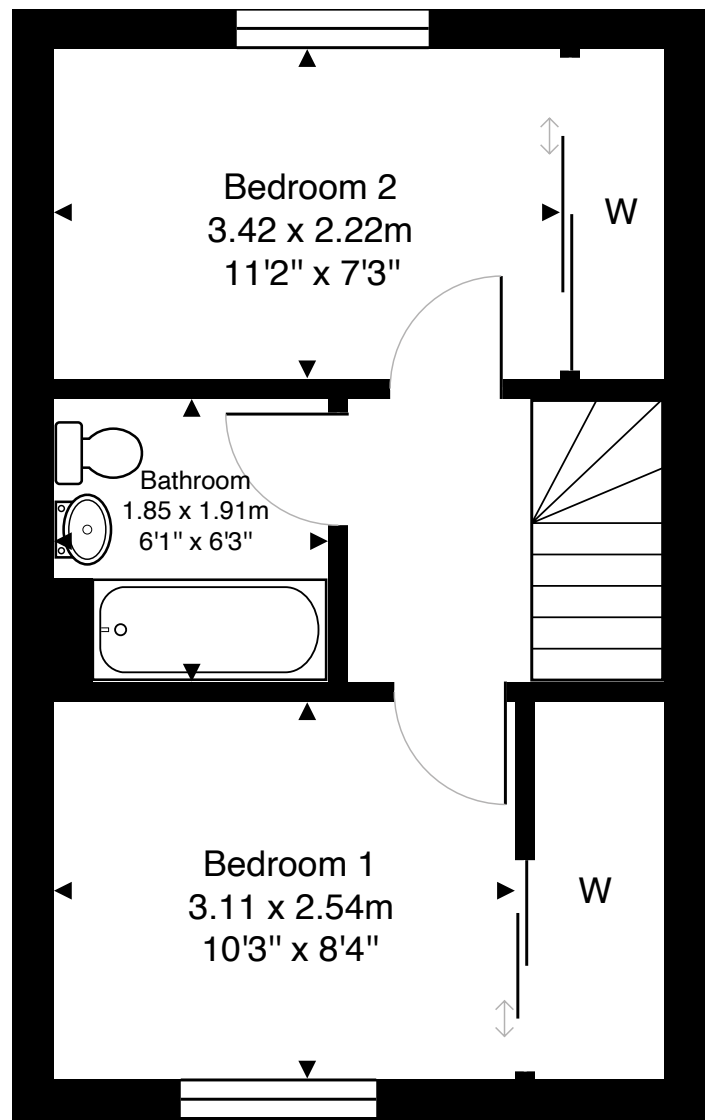
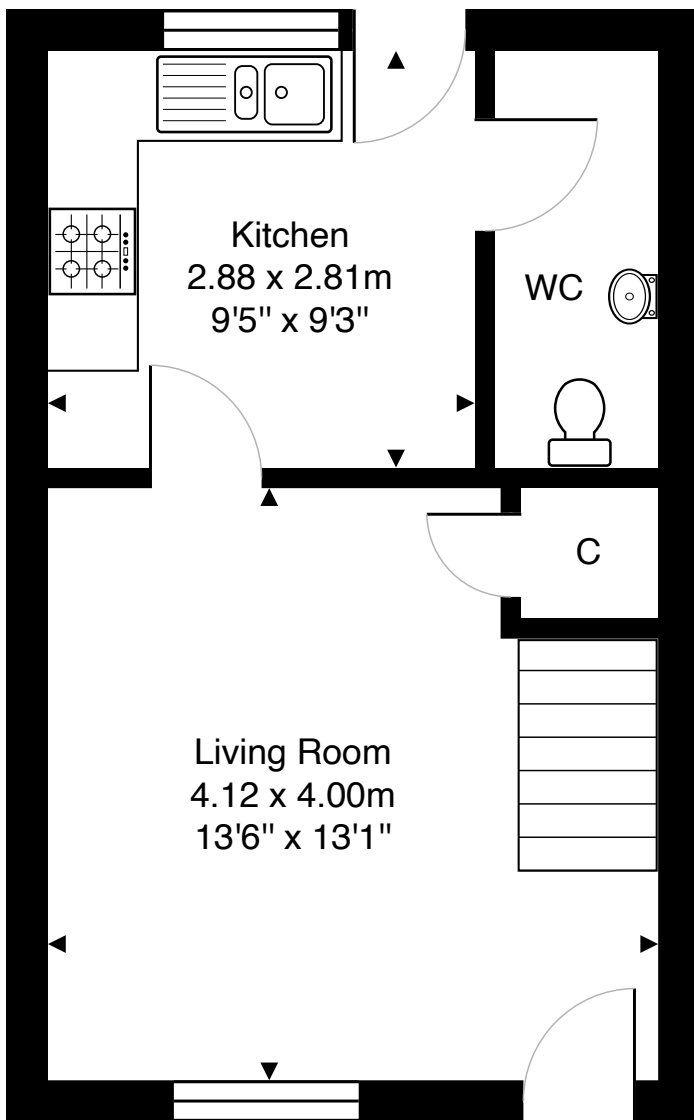
The accommodation is completed by a stylish modern bathroom, partially tiled and fitted with a contemporary three-piece suite including a shower over the bath.



**Bedroom 2**







Gross internal floor area (m<sup>2</sup>): 57m<sup>2</sup>

EPC Rating: C

Externally, the property enjoys a small front garden in keeping with neighbouring homes. To the rear, there is a generous garden that is predominantly laid to lawn, offering excellent outdoor space with plenty of potential for landscaping or family use. The property also benefits from an allocated parking space to the front, with additional unrestricted on-street parking available for visitors.

Early internal viewing is highly recommended to fully appreciate the quality and appeal of this fantastic home.





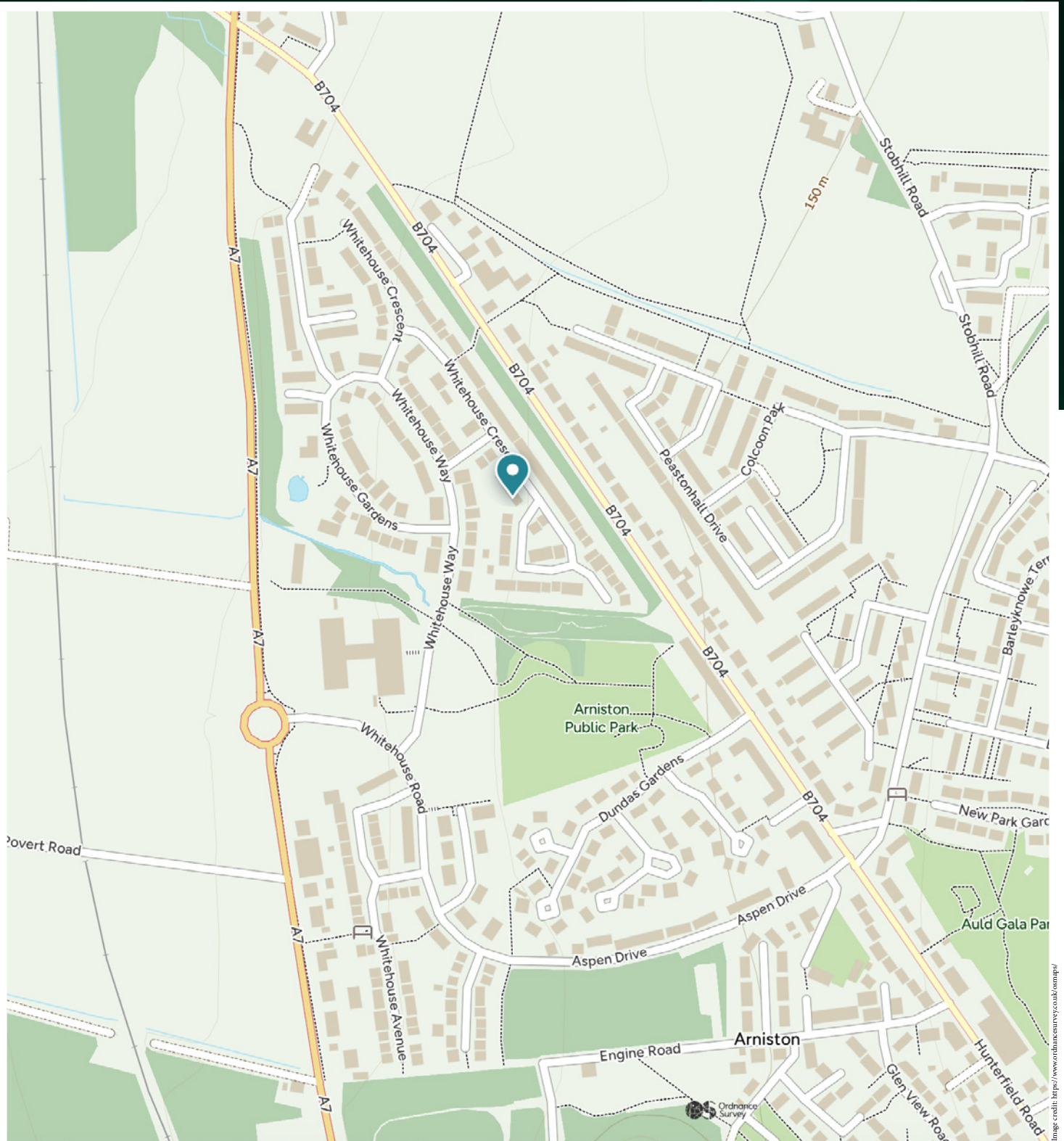
---

Whitehouse Crescent is a quiet residential street in Gorebridge, Midlothian, ideal for families and commuters. The peaceful neighbourhood offers easy access to local amenities, including shops, cafés, and services, with larger supermarkets nearby in Dalkeith. Schooling is well catered for locally, including the well-regarded Gore Glen Primary and Newbattle High School.

Commuters benefit from Newtongrange Railway Station, providing regular rail services to Edinburgh city centre in around 30 minutes, plus convenient road links via the A7 and Edinburgh City Bypass. Outdoor opportunities are plentiful, with scenic walks, cycling routes, and green spaces close by. Gore Glen Woodland Park, Vogrie Country Park and the Pentland Hills Regional Park are within easy reach, offering beautiful landscapes and leisure activities throughout the year.

Combining a semi-rural feel with strong transport connections and local amenities, Whitehouse Crescent represents an appealing and convenient location within the growing Midlothian community of Gorebridge.

---



# McEwan Fraser Legal

Solicitors & Estate Agents

Tel. 0131 524 9797

[www.mcewanfraserlegal.co.uk](http://www.mcewanfraserlegal.co.uk)

[info@mcewanfraserlegal.co.uk](mailto:info@mcewanfraserlegal.co.uk)

Part  
Exchange  
Available



THE SUNDAY TIMES  
THE TIMES



Text and description  
**MICHAEL MCMULLAN**  
Area Sales Manager



Layout graphics and design  
**ALAN SUTHERLAND**  
Designer

**Disclaimer:** The copyright for all photographs, floorplans, graphics, written copy and images belongs to McEwan Fraser Legal and use by others or transfer to third parties is forbidden without our express consent in writing. Prospective purchasers are advised to have their interest noted through their solicitor as soon as possible in order that they may be informed in the event of an early closing date being set for the receipt of offers. These particulars do not form part of any offer and all statements and photographs contained herein are for illustrative purposes and are not guaranteed or warranted. Buyers must satisfy themselves for the accuracy and authenticity of the brochure and should always visit the property to satisfy themselves of the property's suitability and obtain in writing via their solicitor what's included with the property including any land. The dimensions provided may include, or exclude, recesses intrusions and fitted furniture. Any measurements provided are for guide purposes only and have been taken by electronic device at the widest point. Any reference to alterations to, or use of, any part of the property does not mean that any necessary planning, building regulations or other consent has been obtained. A buyer must find out by inspection or in other ways that all information is correct. None of the appliances/services stated or shown in this brochure have been tested by ourselves and none are warranted by our seller or MFL.