



  
**McEwan Fraser Legal**

Solicitors & Estate Agents

0131 524 9797

**Flat 5 2 Kimmerghame Place**

EDINBURGH, EH4 2GE



The property is located in Fettes, which lies in a northwestern edge of Edinburgh's New Town.

The property is ideally placed for local state and private schools, excellent transport links to Edinburgh's city centre and local shopping, educational and recreational facilities are all within walking distance. Despite being less than ten minutes from Princes Street, the sense of being in a more rural setting is even more palpable when taking the scenic route through Stockbridge along The Water of Leith walkway and bicycle routes. The walk to Dean Village with its tree-covered slopes either side of the water and the gentle climb under the awe-inspiring Dean Bridge is a particularly pleasant one whether walking or cycling.

Inverleith Park is the nearest park in the area, a large expanse of green, with the Botanic Gardens adjacent, literally just across the road from Inverleith Park's northeast perimeter. Westwoods Health Club and The Village hotel, gym and spa as well as Starbucks both less than a five-minute walk from the property.



# EDINBURGH

## SPACIOUS & BRIGHT TWO BEDROOM IN FETTES





## LOUNGE/KITCHEN



An excellent opportunity has arisen to acquire this highly desirable flat, very well situated within the popular Fettes area of Edinburgh. Viewing of this property is highly recommended.

Internally this accommodation is in excellent decorative order and briefly comprises of a spacious entrance hallway with ample cupboards and storage space. The lounge is accessed via the hallway and this truly is an excellent space offering up a bright and spacious lounge with balcony and the dining area/kitchen is accessed via the lounge and also via the hallway with two entrances and has an open bright feeling due to the light flooding through from three sides of the building as well as a balcony. The kitchen is fully equipped and benefits from fully integrated appliances as well as bespoke wall units. The dining area features a Juliet balcony with views towards Corstorphine Hill and unrestricted views to Edinburgh Castle.

This property also benefits from two spacious bedrooms, both of which are double in size. The master bedroom benefits from a modern en-suite shower room with spacious double wardrobes making for plenty of storage space. Both bedrooms come with large built-in wardrobes. Completing the rooms is the large spacious three-piece bathroom which is modern and comes fully tiled with a shower over the bath, shower screen.

This property also benefits from gas central heating, full double glazing and is wired for high-speed internet as well a designated private underground parking space, a secure bicycle store, a lift service and landscaped communal courtyard.

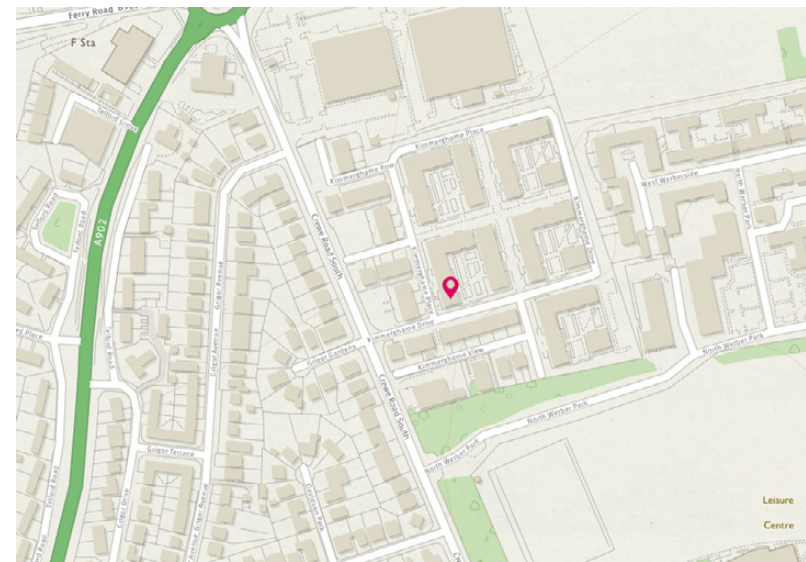
## FLAT 5 2 KIMMERGHAME PLACE



## BEDROOMS/BATHROOM



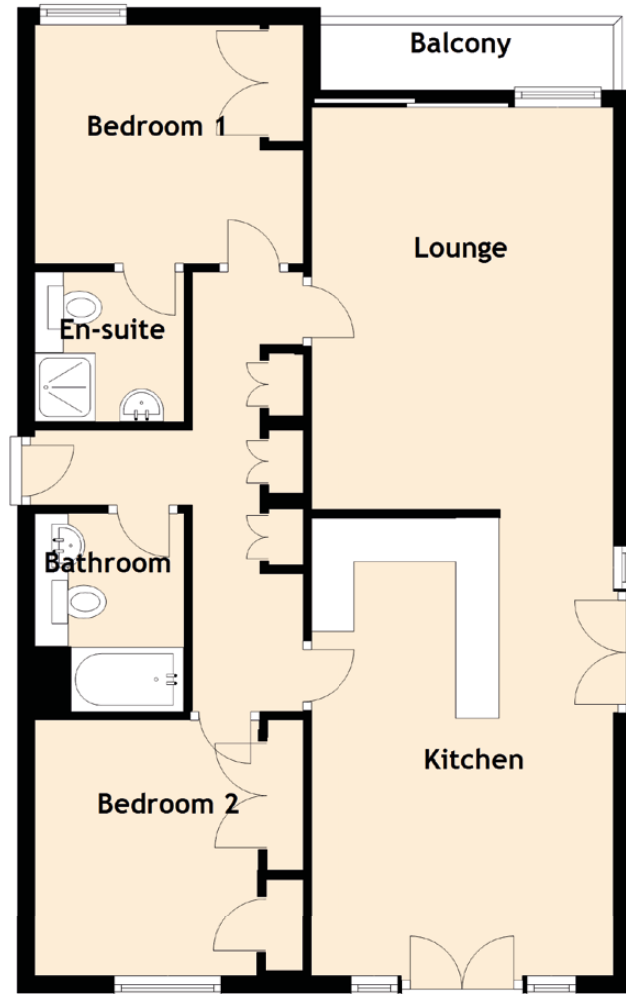
# FLOOR PLAN, DIMENSIONS, LOCATION



Approximate Dimensions (Taken from the widest point)

Lounge	4.96m (16'3") x 3.50m (11'6")
Kitchen	5.50m (18'1") x 3.50m (11'6")
Bedroom 1	3.35m (11') x 3.00m (9'10")
En-suite	1.94m (6'4") x 1.80m (5'11")
Bedroom 2	2.87m (9'5") x 2.75m (9')
Bathroom	2.33m (7'8") x 1.80m (5'11")

Gross internal floor area (m<sup>2</sup>): 82m<sup>2</sup> | EPC Rating: B





**McEwan Fraser Legal**  
Solicitors & Estate Agents

Tel. 0131 524 9797  
www.mcewanfraserlegal.co.uk  
info@mcewanfraserlegal.co.uk

**Part  
Exchange  
Available**

**Disclaimer:** The copyright for all photographs, floorplans, graphics, written copy and images belongs to McEwan Fraser Legal and use by others or transfer to third parties is forbidden without our express consent in writing. Prospective purchasers are advised to have their interest noted through their solicitor as soon as possible in order that they may be informed in the event of an early closing date being set for the receipt of offers. These particulars do not form part of any offer and all statements and photographs contained herein are for illustrative purposes and are not guaranteed or warranted. Buyers must satisfy themselves for the accuracy and authenticity of the brochure and should always visit the property to satisfy themselves of the property's suitability and obtain in writing via their solicitor what's included with the property including any land. The dimensions provided may include, or exclude, recesses intrusions and fitted furniture. Any measurements provided are for guide purposes only and have been taken by electronic device at the widest point. Any reference to alterations to, or use of, any part of the property does not mean that any necessary planning, building regulations or other consent has been obtained. A buyer must find out by inspection or in other ways that all information is correct. None of the appliances/services stated or shown in this brochure have been tested by ourselves and none are warranted by our seller or MFL.



Text and description  
**BEN STEWART CLARK**  
Surveyor



Professional photography  
**ROSS MCBRIDE**  
Photographer



Layout graphics and design  
**ABBEY TURPIE**  
Designer