




McEwan Fraser Legal
Solicitors & Estate Agents
01698 537 177

3 Kingfisher Avenue
FERNIEGAIR, HAMILTON, SOUTH LANARKSHIRE, ML3 7GF



Ferniegair

HAMILTON,
SOUTH LANARKSHIRE,
ML3 7GF

The property is perfectly placed for gaining fast access to the M74 motorway and is just a short walk from Chatelherault Train Station, which offers regular rail services to Glasgow.

The property is also situated in close proximity to a selection of amenities in both Hamilton and Larkhall that include; mainstream and private schools, supermarkets, restaurants and a selection of leisure facilities.

Kingfisher Avenue is also very close to Chatelherault Country Park, which is regarded as an area of historical importance and offers fabulous woodland walks.



3 Kingfisher Avenue

FERNIEGAIR, HAMILTON,
SOUTH LANARKSHIRE, ML3 7GF

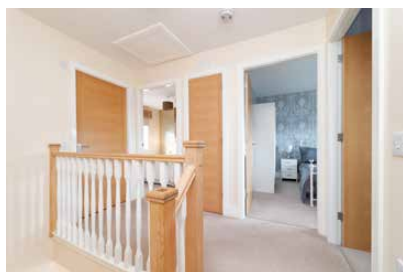
McEwan Fraser is delighted to present this impressive semi-detached villa which is set within the much-admired Dukes estate.

Built by Avant Homes in 2015, the property has an exceptional open lounge area which incorporates both the sizeable dining area and integrated kitchen seamlessly thus providing a free-flowing feel to the ground floor. The home also has gas fired central heating and double glazing for extra warmth and comfort.

The ground floor accommodation comprises of entrance hall with cloakroom/WC, striking open plan lounge with bi-folding doors, open plan dining room, integrated kitchen with stainless appliances and utility closet. The upper floor offers three well-proportioned bedrooms and a separate three-piece bathroom.

The front gardens are open plan and laid to lawn with and there are two allocated parking spaces. The enclosed rear garden has an open aspect with decking and an established lawn.

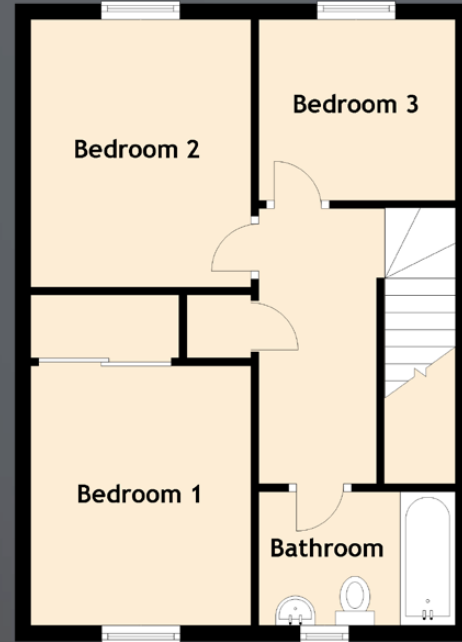
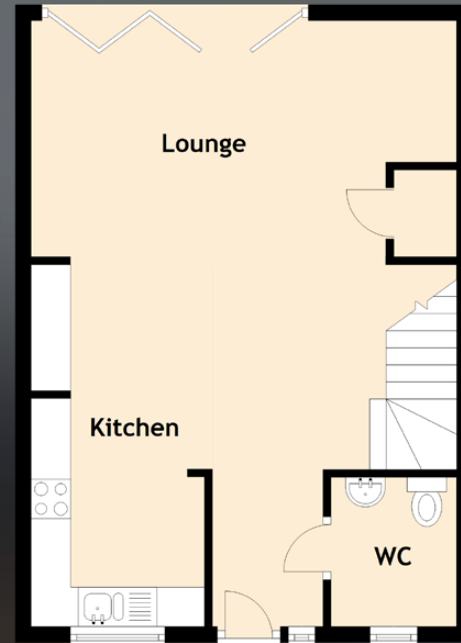
This is a beautiful house that would make an ideal starter home. Internal viewing highly recommended.





Specifications & Details

FLOOR PLAN, DIMENSIONS & MAP



Approximate Dimensions
(Taken from the widest point)

Lounge	5.40m (17'9") x 3.00m (9'10")
Kitchen	4.60m (15'1") x 2.20m (7'3")
Bedroom 1	3.30m (10'10") x 2.90m (9'6")
Bedroom 2	3.40m (11'2") x 2.80m (9'2")
Bedroom 3	2.50m (8'2") x 2.30m (7'7")
Bathroom	2.40m (7'10") x 1.70m (5'7")
WC	1.90m (6'3") x 1.60m (5'3")

Gross internal floor area (m²): 80m²

EPC Rating: C

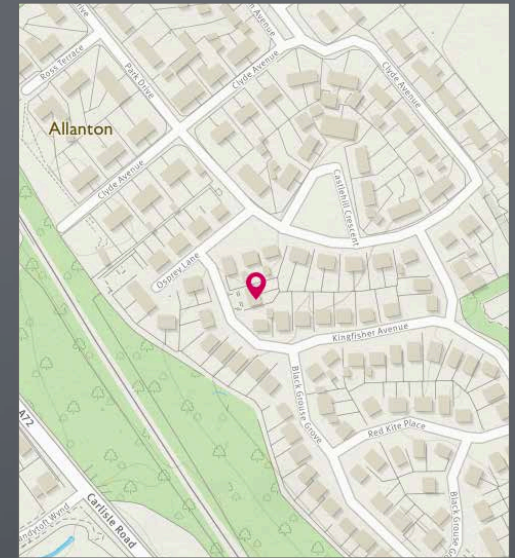


Image credit: <https://www.onthemap.co.uk/maps/>



McEwan Fraser Legal

Solicitors & Estate Agents

Tel. 01698 537 177
www.mcewanfraserlegal.co.uk
info@mcewanfraserlegal.co.uk

Part
Exchange
Available

Disclaimer: The copyright for all photographs, floorplans, graphics, written copy and images belongs to McEwan Fraser Legal and use by others or transfer to third parties is forbidden without our express consent in writing. Prospective purchasers are advised to have their interest noted through their solicitor as soon as possible in order that they may be informed in the event of an early closing date being set for the receipt of offers. These particulars do not form part of any offer and all statements and photographs contained herein are for illustrative purposes and are not guaranteed or warranted. Buyers must satisfy themselves for the accuracy and authenticity of the brochure and should always visit the property to satisfy themselves of the property's suitability and obtain in writing via their solicitor what's included with the property including any land. The dimensions provided may include, or exclude, recesses intrusions and fitted furniture. Any measurements provided are for guide purposes only and have been taken by electronic device at the widest point. Any reference to alterations to, or use of, any part of the property does not mean that any necessary planning, building regulations or other consent has been obtained. A buyer must find out by inspection or in other ways that all information is correct. None of the appliances/services stated or shown in this brochure have been tested by ourselves and none are warranted by our seller or MFL.

