




McEwan Fraser Legal

Solicitors & Estate Agents

0131 524 9797

5/6 Kimmerghame View

FETTES, EDINBURGH, EH4 2GP



AREA FETTES

EDINBURGH, EH4 2GP

The property is located in Fettes, which lies in a northwestern edge of Edinburgh's New Town.

The property is ideally placed for local state and private schools, excellent transport links to Edinburgh's city centre and local shopping, educational and recreational facilities are all within walking distance. Despite being less than ten minutes from Princes Street, the sense of being in a more rural setting is even more palpable when taking the scenic route through Stockbridge along The Water of Leith walkway and bicycle routes. The walk to Dean Village with its tree-covered slopes either side of the water and the gentle climb under the awe-inspiring Dean Bridge is a particularly pleasant one whether walking or cycling.

Inverleith Park is the nearest park in the area, a large expanse of green, with the Botanic Gardens adjacent, literally just across the road from Inverleith Park's northeast perimeter. Westwoods Health Club and The Village hotel, gym and spa as well as Starbucks both less than a five-minute walk from the property.





5/6 KIMMERGHAME VIEW

FETTES, EDINBURGH, EH4 2GP

An excellent opportunity has arisen to acquire this highly desirable flat, very well situated within this popular area of Edinburgh with fantastic views over Fettes up to Edinburgh Castle giving a clear view of the fireworks. Viewing of this property is highly recommended.

Internally this accommodation is in excellent decorative order, having been completely redecorated within the last two years, and briefly comprises of a spacious entrance hallway with ample cupboards that have fully fitted and configurable storage. The lounge is accessed via the hallway and this truly is an excellent space offering up a bright and spacious lounge with balcony and the dining area/kitchen is accessed via the lounge and also via the hallway with two entrances and has an open bright feeling due to the light flooding through from three sides of the building as well as a balcony. The kitchen is fully equipped and benefits from fully integrated appliances, including a new Siemens washer/dryer, as well as bespoke wall units.

This property also benefits from two spacious bedrooms, both of which are double in size. The master bedroom benefits from a modern en-suite shower room that has been refurbished, improved and modernised within the last 2 years, with spacious double wardrobes that are fully fitted, and configurable making for plenty of storage space. Both bedrooms come with large built-in wardrobes that are fully fitted and configurable. Completing the rooms is the large spacious three-piece bathroom that has also been refurbished within the last 2 years which is modern and comes fully tiled with a shower over the bath, shower screen.

This property also benefits from Nest controlled gas central heating that can be controlled remotely from a smart phone, full double glazing with the windows in kitchen/diner fitted with Apollo perfect fit thermo efficient blinds. The property is wired for high-speed internet as well as having a designated private underground parking space and a secure bicycle store.





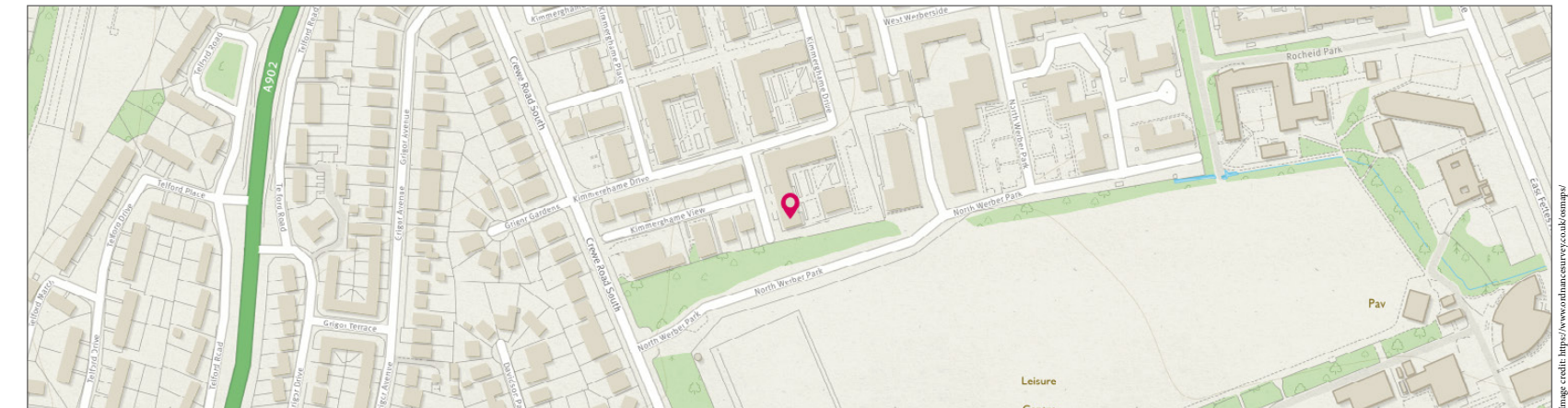
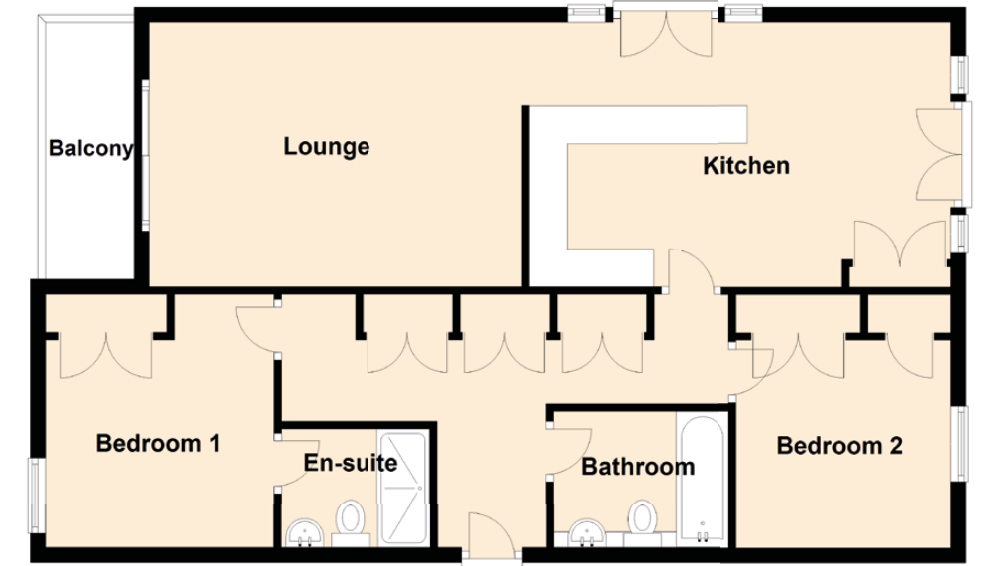
DETAILS & SPECIFICATIONS

FLOOR PLAN, DIMENSIONS & MAP

Approximate Dimensions (Taken from the widest point)

Lounge	4.93m (16'2") x 3.50m (11'6")
Balcony	3.50m (11'6") x 1.27m (4'2")
Kitchen	5.58m (18'4") x 3.50m (11'6")
Bedroom 1	3.35m (11') x 3.01m (9'11")
En-suite	1.97m (6'6") x 1.57m (5'2")
Bedroom 2	2.84m (9'4") x 2.74m (9')
Bathroom	2.32m (7'7") x 1.80m (5'11")

Gross internal floor area (m²): 79m² | EPC Rating: B






McEwan Fraser Legal
 Solicitors & Estate Agents

Tel. 0131 524 9797
 www.mcewanfraserlegal.co.uk
 info@mcewanfraserlegal.co.uk

**Part
 Exchange
 Available**

Disclaimer: The copyright for all photographs, floorplans, graphics, written copy and images belongs to McEwan Fraser Legal and use by others or transfer to third parties is forbidden without our express consent in writing. Prospective purchasers are advised to have their interest noted through their solicitor as soon as possible in order that they may be informed in the event of an early closing date being set for the receipt of offers. These particulars do not form part of any offer and all statements and photographs contained herein are for illustrative purposes and are not guaranteed or warranted. Buyers must satisfy themselves for the accuracy and authenticity of the brochure and should always visit the property to satisfy themselves of the property's suitability and obtain in writing via their solicitor what's included with the property including any land. The dimensions provided may include, or exclude, recesses intrusions and fitted furniture. Any measurements provided are for guide purposes only and have been taken by electronic device at the widest point. Any reference to alterations to, or use of, any part of the property does not mean that any necessary planning, building regulations or other consent has been obtained. A buyer must find out by inspection or in other ways that all information is correct. None of the appliances/services stated or shown in this brochure have been tested by ourselves and none are warranted by our seller or MFL.



Text and description
BEN STEWART CLARK
 Surveyor



Professional photography
ROSS MCBRIDE
 Photographer



Layout graphics and design
ALLY CLARK
 Designer