




McEwan Fraser Legal
Solicitors & Estate Agents
0141 404 5474

1/2, 298 Possil Road

GLASGOW, G4 9SX

Glasgow

G4 9SX

This fantastic apartment is ideally placed for those who love city life. Perfect for both working and socializing, offering not only a great location but also great transport links to the M8/M74 motorways (five minutes drive) and M77 allowing access to all corridors of central Scotland.

Some of the most iconic landmarks Glasgow has to offer are only a short distance away. Glasgow's trendy West End is less than ten minutes away with its seemingly limitless choice of fine restaurants, bars and cafés.



1/2, 298 Possil Road

GLASGOW, G4 9SX

We are delighted to bring to the market, this excellent two-bedroom apartment. Set in a well designed modern apartment building. The location is simply perfect and offers a great place to live and work from.

The accommodation consists of a spacious lounge with large windows, allowing light to flood the room. The apartment is very stylish and offers a perfect executive style apartment for easy city living.

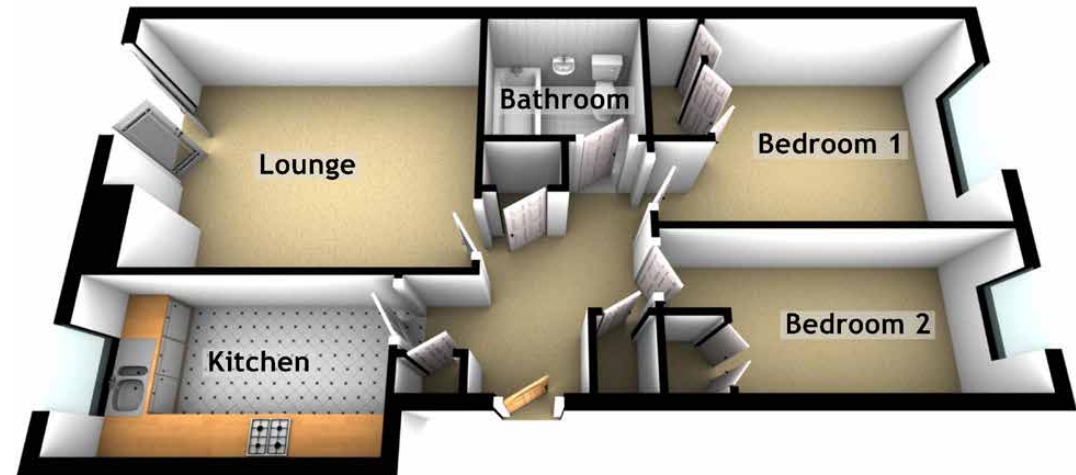
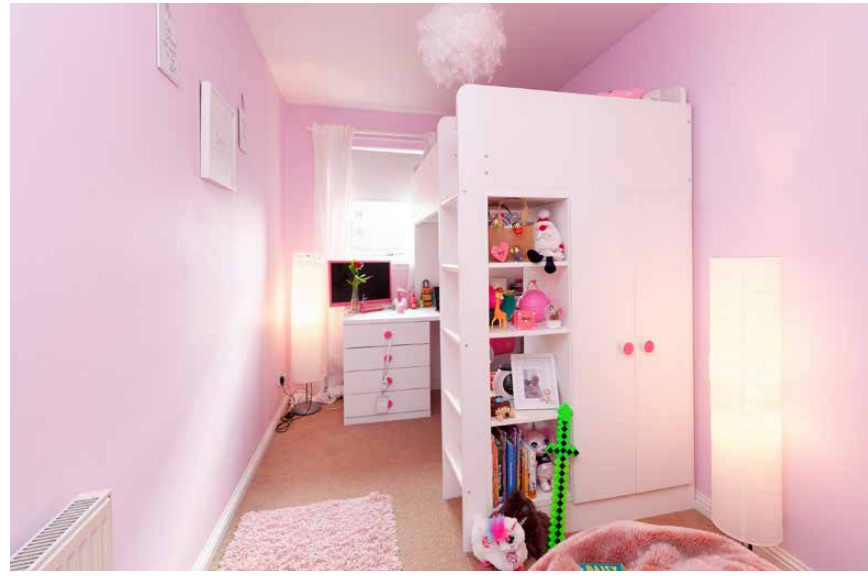
The kitchen is finished in a great range of natural wood units, with an electric oven and hob with ample space for a freestanding washing machine and integrated fridge freezer and dishwasher. There is space that could be made available at the french doors to accommodate a small dining table if required and the lounge would suit a range of furniture configurations.

The tiled bathroom is fresh and bright with a white suite and a mains shower over the P shaped bath. The two bedrooms are a good size, both benefiting from built-in wardrobes and ample room for free-standing furniture.

To keep the apartment tidy, there are ample storage cupboards. The double glazing, gas central heating, secure entry system, and smoke alarm ensure the apartment is always warm, comfortable, secure, and safe. There is one allocated private parking space in the resident's car park, a must for any inner-city apartment.

Some properties tick all the boxes, this is certainly one of them. Early viewing is strongly advised, for this first-class opportunity to own a stylish city-apartment, set in a very desirable close to city centre development.





Specifications & Details

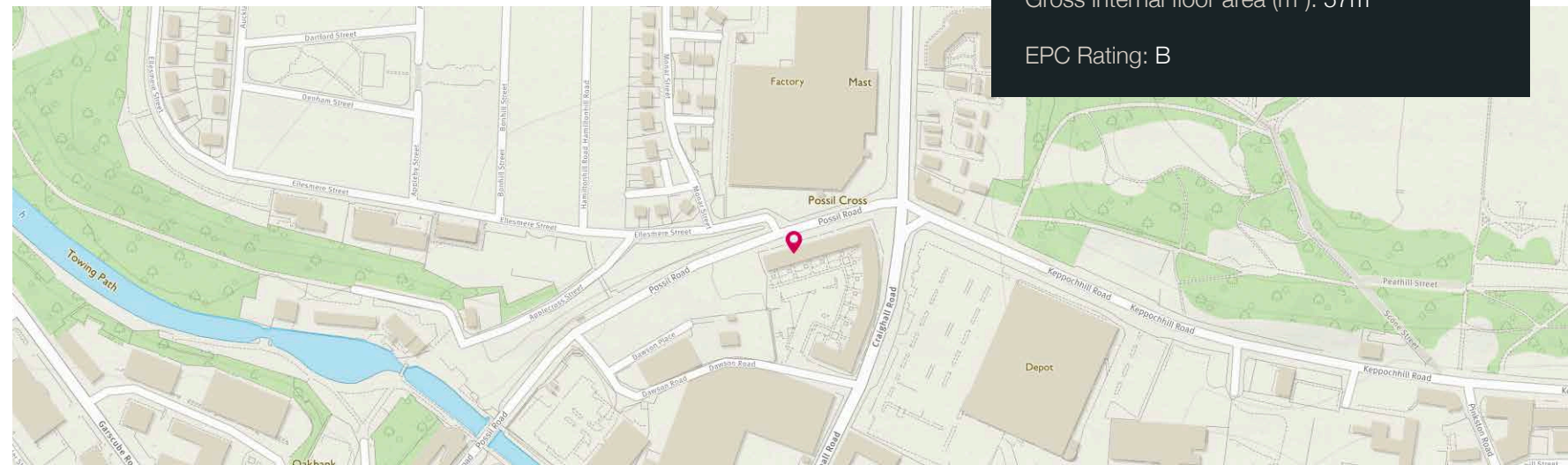
FLOOR PLAN, DIMENSIONS & MAP

Approximate Dimensions
(Taken from the widest point)

Lounge	4.70m (15'5") x 3.60m (11'10")
Kitchen	3.77m (12'5") x 2.10m (6'11")
Bedroom 1	4.40m (14'5") x 3.00m (9'10")
Bedroom 2	4.40m (14'5") x 2.00m (6'7")
Bathroom	2.10m (6'11") x 1.80m (5'11")

Gross internal floor area (m²): 57m²

EPC Rating: B






McEwan Fraser Legal

Solicitors & Estate Agents

Tel. 0141 404 5474
www.mcewanfraserlegal.co.uk
info@mcewanfraserlegal.co.uk

**Part
Exchange
Available**

Disclaimer: The copyright for all photographs, floorplans, graphics, written copy and images belongs to McEwan Fraser Legal and use by others or transfer to third parties is forbidden without our express consent in writing. Prospective purchasers are advised to have their interest noted through their solicitor as soon as possible in order that they may be informed in the event of an early closing date being set for the receipt of offers. These particulars do not form part of any offer and all statements and photographs contained herein are for illustrative purposes and are not guaranteed or warranted. Buyers must satisfy themselves for the accuracy and authenticity of the brochure and should always visit the property to satisfy themselves of the property's suitability and obtain in writing via their solicitor what's included with the property including any land. The dimensions provided may include, or exclude, recesses intrusions and fitted furniture. Any measurements provided are for guide purposes only and have been taken by electronic device at the widest point. Any reference to alterations to, or use of, any part of the property does not mean that any necessary planning, building regulations or other consent has been obtained. A buyer must find out by inspection or in other ways that all information is correct. None of the appliances/services stated or shown in this brochure have been tested by ourselves and none are warranted by our seller or MFL.



Text and description
KEN MEISAK
 Surveyor



Professional photography
CRAIG DEMPSTER
 Photographer



Layout graphics and design
ALLY CLARK
 Designer