

71 Whitelaw Crescent

DUNFERMLINE, KY11 4RR



Beautifully presented two-bedroom, end-terraced villa with gardens, offered in walk-in condition



01383 660 570



www.mcewanfraserlegal.co.uk



info@mcewanfraserlegal.co.uk



McEwan Fraser Legal is delighted to present this charming two-bedroom, end-terraced villa that offers a welcoming and spacious living environment, complemented by beautiful wrap-around gardens.

THE LOUNGE/DINER



Accessed via steps from the pavement, the home opens to a large, bright hallway that sets the tone for the rest of the property. The dual-aspect lounge/dining room is both bright and comfortable, featuring a fireplace as the focal point, with French doors leading directly to the rear garden. The kitchen is thoughtfully designed with a U-shaped layout, offering a wealth of modern units for storage and ample worktop space for culinary needs.

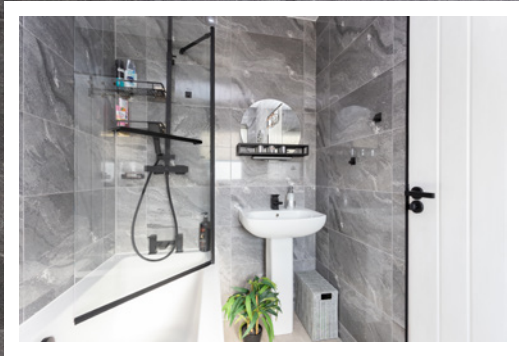
THE KITCHEN





Upstairs, the home continues to impress with two well-proportioned bedrooms and a stylish family bathroom.

THE BATHROOM



BEDROOM 1



BEDROOM 2

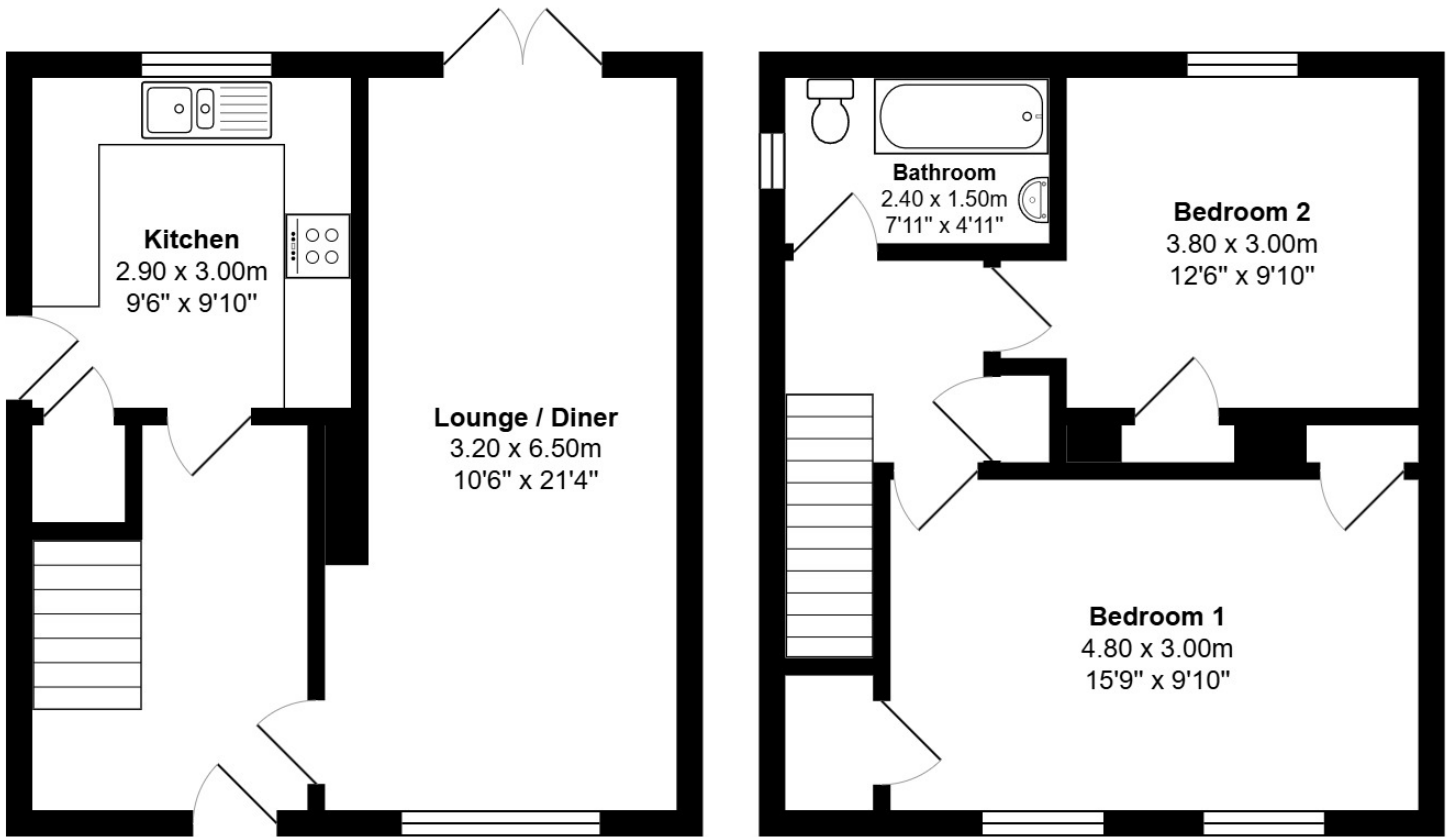


Presented in true walk-in condition, this villa is ready to become a comfortable and inviting home.

EXTERNALS

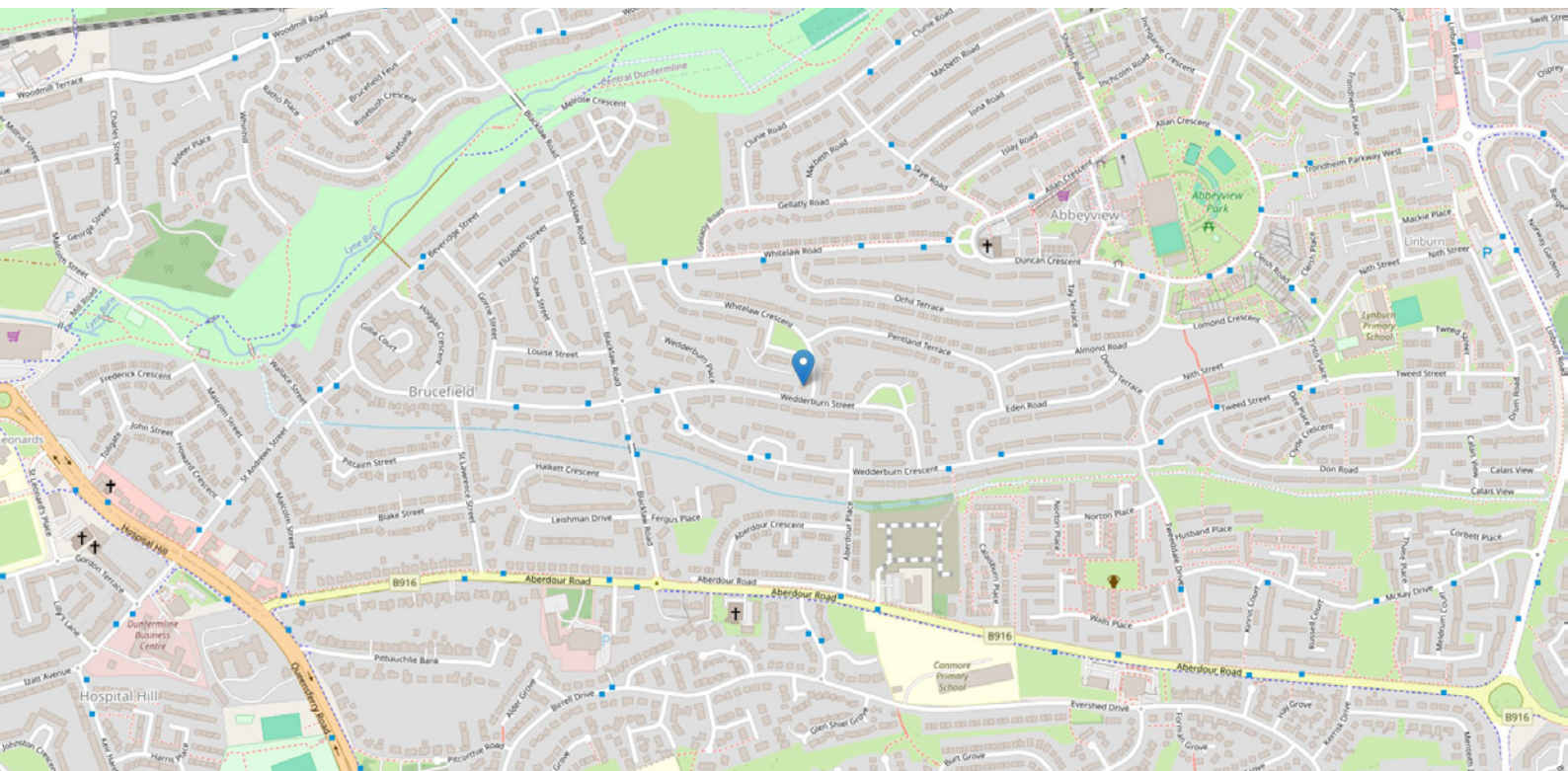


FLOOR PLAN, DIMENSIONS & MAP



Approximate Dimensions (Taken from the widest point)

Gross internal floor area (m²): 77m²
EPC Rating: D



THE LOCATION

Whitelaw Crescent in Dunfermline offers a fantastic setting for couples or small families looking for a peaceful yet well-connected location. This home is nestled in a sought-after residential area that combines a friendly neighbourhood atmosphere with easy access to local amenities.





The vibrant town of Dunfermline, steeped in history, provides a great range of shops, cafes, and leisure facilities, ensuring everything you need is close at hand. For families, there are excellent schools nearby, and a variety of parks and green spaces, such as Pittencrieff Park, perfect for outdoor activities and weekend strolls.

Commuters will appreciate the easy access to the M90, offering a straightforward journey to Edinburgh, while Dunfermline's train station is a short drive away, providing frequent rail links. With a balance of modern conveniences and a strong community feel, Whitelaw Crescent is an ideal location for those seeking a welcoming and well-connected home in a desirable part of Dunfermline.



McEwan Fraser Legal

Solicitors & Estate Agents

Tel. 01383 660 570

www.mcewanfraserlegal.co.uk

info@mcewanfraserlegal.co.uk

Part
Exchange
Available



THE SUNDAY TIMES
THE SUNDAY TIMES



Text and description
JAYNE SMITH
Corporate Account Manager



Professional photography
GRANT LAWRENCE
Photographer



Layout graphics and design
ALLY CLARK
Designer

Disclaimer: The copyright for all photographs, floorplans, graphics, written copy and images belongs to McEwan Fraser Legal and use by others or transfer to third parties is forbidden without our express consent in writing. Prospective purchasers are advised to have their interest noted through their solicitor as soon as possible in order that they may be informed in the event of an early closing date being set for the receipt of offers. These particulars do not form part of any offer and all statements and photographs contained herein are for illustrative purposes and are not guaranteed or warranted. Buyers must satisfy themselves for the accuracy and authenticity of the brochure and should always visit the property to satisfy themselves of the property's suitability and obtain in writing via their solicitor what's included with the property including any land. The dimensions provided may include, or exclude, recesses intrusions and fitted furniture. Any measurements provided are for guide purposes only and have been taken by electronic device at the widest point. Any reference to alterations to, or use of, any part of the property does not mean that any necessary planning, building regulations or other consent has been obtained. A buyer must find out by inspection or in other ways that all information is correct. None of the appliances/services stated or shown in this brochure have been tested by ourselves and none are warranted by our seller or MFL.