

Kapua Maud

PETERHEAD, ABERDEENSHIRE, AB42 5PS



*A detached equestrian property of
about five acres with beautiful views*



01224 472 441



www.mcewanfraserlegal.co.uk



info@mcewanfraserlegal.co.uk



Kapua is situated at the rear of its five-acre plot and has beautiful views across its own paddocks and over the Aberdeenshire countryside. There is a 40m x 20m outdoor menage and stables to the rear of the property, making it perfect for having your own horses.

THE LOUNGE



The house has a reception hall, a lounge, a sun room, and a large open plan kitchen/diner, which is definitely the heart of the home and takes advantage of the views.

THE SUN ROOM



THE KITCHEN/DINER



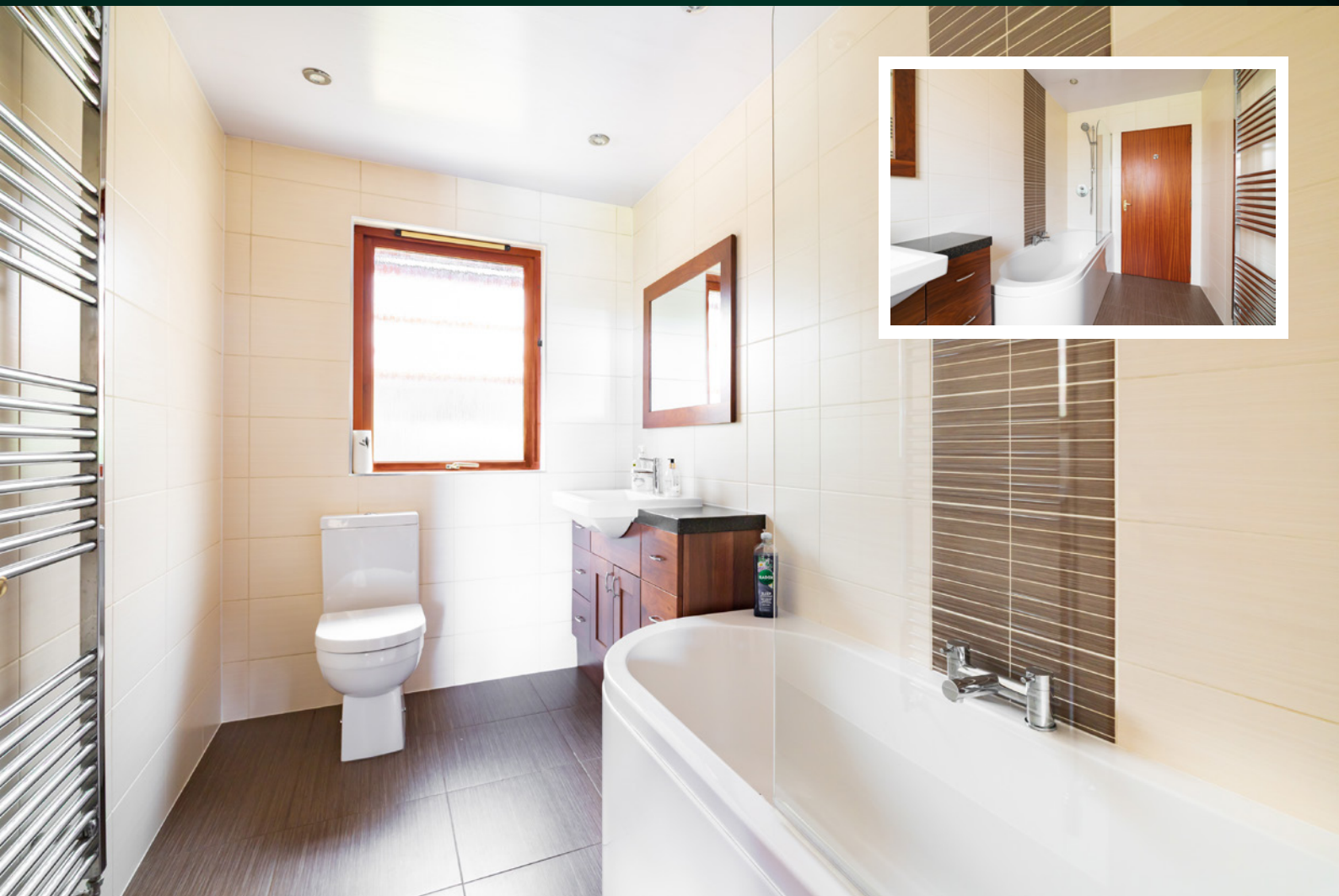
the heart of the home and
takes advantage of the views





There are three double bedrooms, the main having an en-suite and the others served by a family bathroom.

THE BATHROOM



BEDROOM 1



BEDROOM 2



BEDROOM 3



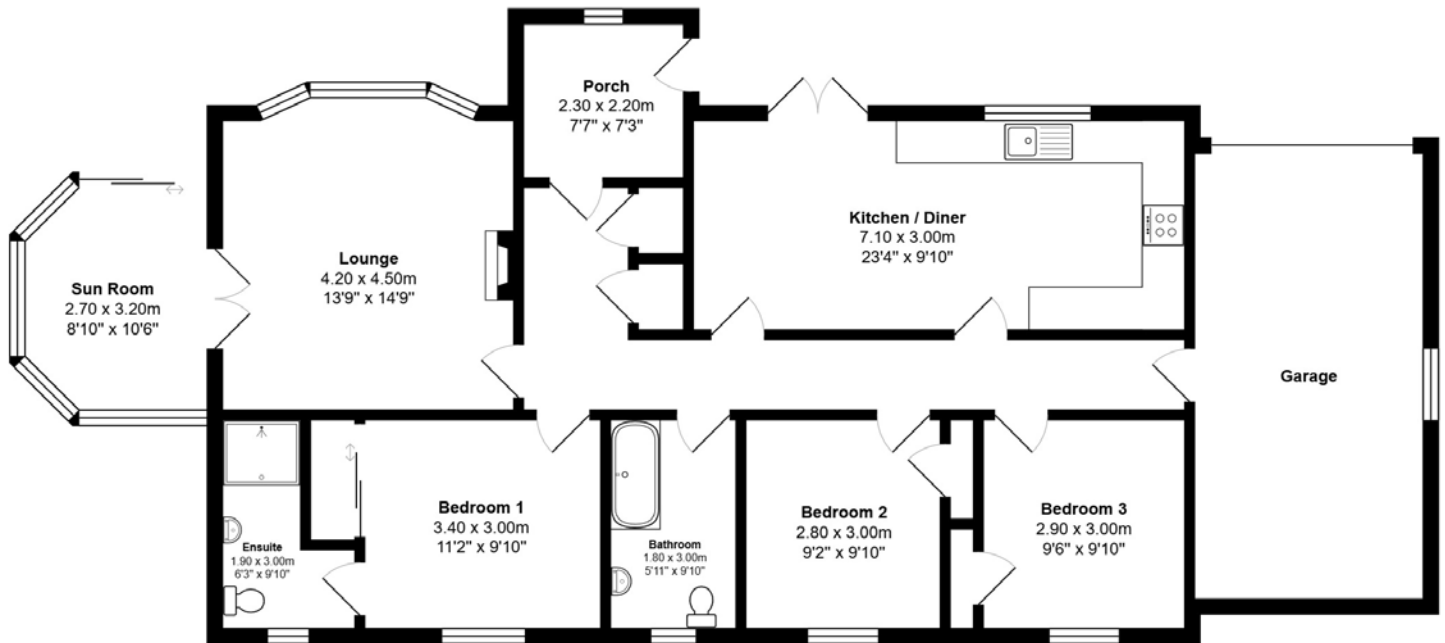
Attached to the house is a double garage. At the rear are stables, a store and a tack/feed room.

EXTERNALS



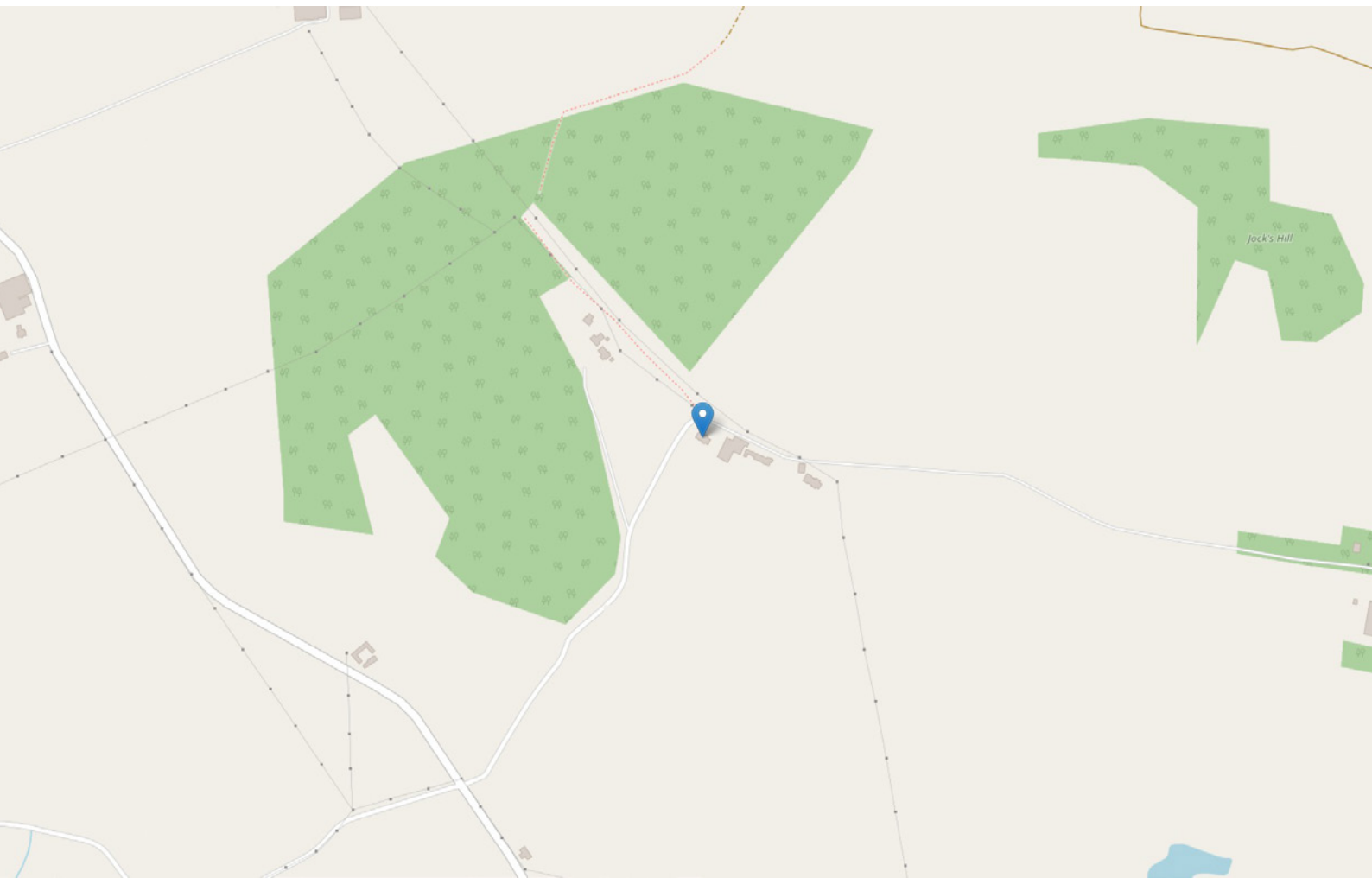


FLOOR PLAN & DIMENSIONS



Approximate Dimensions (Taken from the widest point)

Gross internal floor area (m²): 111m² | EPC Rating: D



THE LOCATION

Kapua is set in rolling open countryside, close to the villages of Maud and New Deer.





Both of which have excellent local facilities including shops, cafes and primary Schooling. Nearby Peterhead and Mintlaw offer more comprehensive shopping facilities. The area is spoilt with lots of open countryside to explore, beautiful remote beaches and the city of Aberdeen, with its international airport and railway station, connects you to the rest of the country easily.



McEwan Fraser Legal

Solicitors & Estate Agents

Tel. 01224 472 441

www.mcewanfraserlegal.co.uk

info@mcewanfraserlegal.co.uk

Part
Exchange
Available



Text and description
IAN HAINES
Surveyor



Professional photography
MICHAEL MORLEY
Photographer



Layout graphics and design
ALLY CLARK
Designer

Disclaimer: The copyright for all photographs, floorplans, graphics, written copy and images belongs to McEwan Fraser Legal and use by others or transfer to third parties is forbidden without our express consent in writing. Prospective purchasers are advised to have their interest noted through their solicitor as soon as possible in order that they may be informed in the event of an early closing date being set for the receipt of offers. These particulars do not form part of any offer and all statements and photographs contained herein are for illustrative purposes and are not guaranteed or warranted. Buyers must satisfy themselves for the accuracy and authenticity of the brochure and should always visit the property to satisfy themselves of the property's suitability and obtain in writing via their solicitor what's included with the property including any land. The dimensions provided may include, or exclude, recesses intrusions and fitted furniture. Any measurements provided are for guide purposes only and have been taken by electronic device at the widest point. Any reference to alterations to, or use of, any part of the property does not mean that any necessary planning, building regulations or other consent has been obtained. A buyer must find out by inspection or in other ways that all information is correct. None of the appliances/services stated or shown in this brochure have been tested by ourselves and none are warranted by our seller or MFL.