

Chimneys

ARGYLL, ACHARACLE, HIGHLAND, PH36 4JL



Occupying a generous plot of approximately 2.7 acres, Chimneys, Argyll is a spacious four-bedroom bungalow with open views across Loch Shiel and the surrounding countryside



01463 211 116



www.mcewanfraserlegal.co.uk



info@mcewanfraserlegal.co.uk



Set in an enviable position within the stunning West Highland landscape, Chimneys, Argyll, presents a beautifully spacious four-bedroom bungalow occupying approximately 2.7 acres of private grounds, with spectacular uninterrupted views across Loch Shiel.

THE LOUNGE



The property offers well-balanced and flexible accommodation ideally suited to family living. The welcoming lounge is centred around an open fire, creating a warm and inviting atmosphere, while a separate dining room provides an excellent space for both formal entertaining and everyday use. A bright conservatory enjoys peaceful outlooks over the surrounding grounds and loch, offering a relaxing space to unwind throughout the year.

THE CONSERVATORY



THE DINING ROOM



THE KITCHEN & UTILITY



The kitchen is well-proportioned and complemented by a practical utility room, ensuring convenience for modern living.





There are four bedrooms in total, two of which benefit from en-suite facilities, with a separate shower room serving the remaining accommodation.

THE SHOWER ROOM



BEDROOM 1



BEDROOM 2



four bedrooms in total, two of which benefit from en-suite facilities



BEDROOM 3



BEDROOM 4



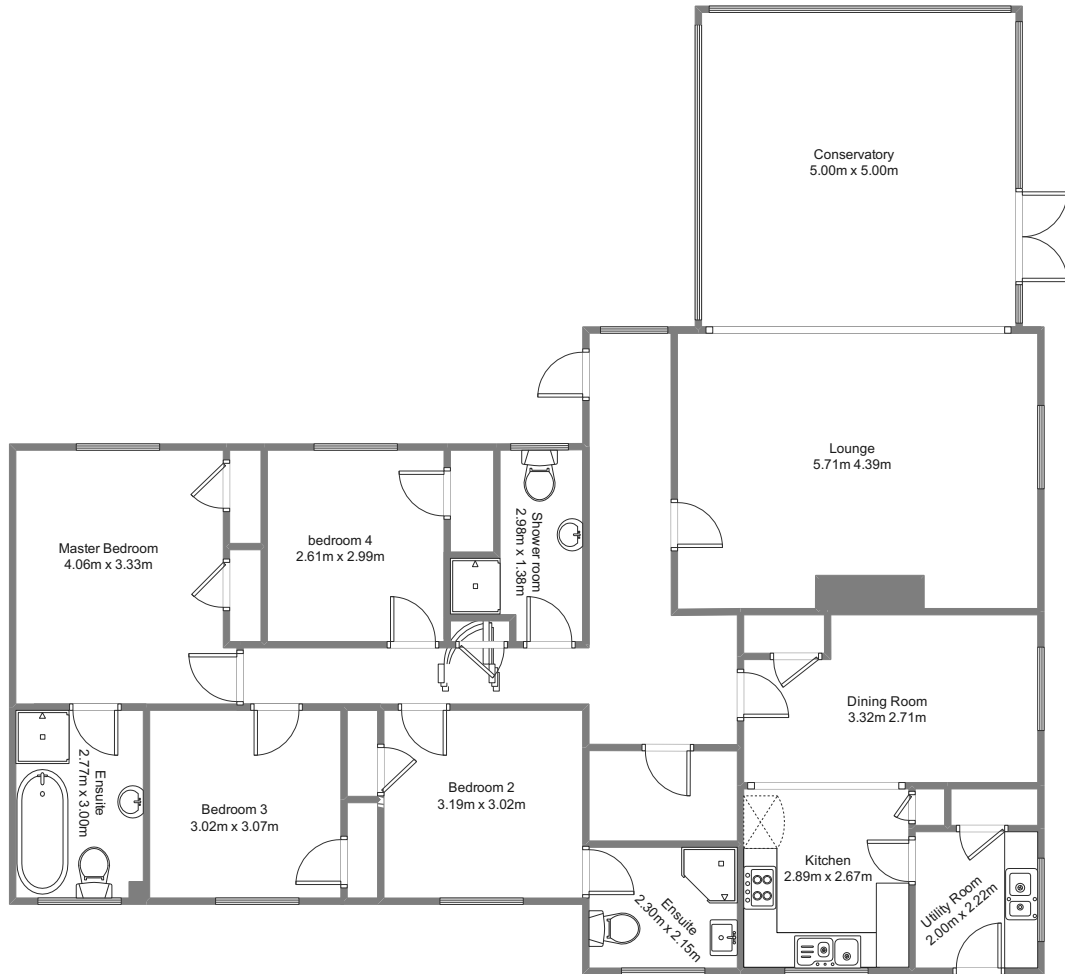
Externally, the grounds are a standout feature of the property. A stone chipped driveway provides ample parking for multiple vehicles. The gardens include a patio area ideal for outdoor dining, a well maintained lawn, and a pond with a decked seating area, creating a tranquil outdoor retreat. A shed offers useful additional storage. Further benefits include oil fired central heating.

The property offers a combination of space, privacy and open outlooks, while remaining part of an established and well regarded rural location. This makes it a practical choice for buyers seeking a well proportioned home with land in a scenic Highland setting.

EXTERNALS

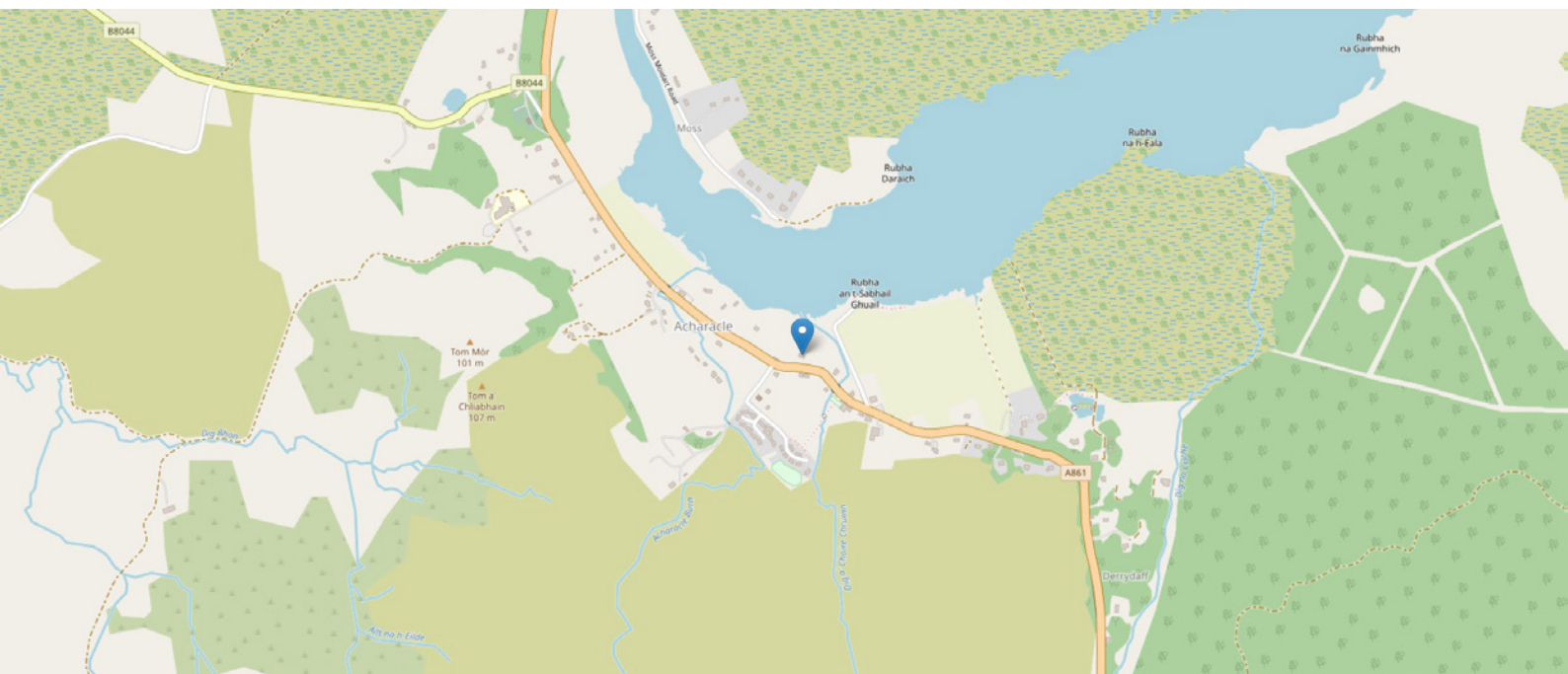


FLOOR PLAN & DIMENSIONS



Approximate Dimensions (Taken from the widest point)

Gross internal floor area (m²): 150m² | EPC Rating: D



THE LOCATION

The property is located within the village of Acharacle on the Ardnamurchan peninsula, part of the wider Lochaber area of the Scottish Highlands. The village provides a range of everyday amenities, including a local shop, café, hotel, medical practice and community facilities. Primary education is available at Acharacle Primary School, with secondary schooling at Ardnamurchan High School in nearby Strontian.





Fort William, approximately 40 miles away, offers a wider selection of supermarkets, shops, leisure facilities and professional services. The town also provides rail links via the West Highland Line, with services to Glasgow and connections to the national rail network.

Access to the area is via the A861, which connects to the A830 at Lochailort, providing routes towards Fort William and the surrounding west coast. Bus services operate throughout the peninsula, linking Acharacle with nearby villages including Strontian, Salen and Kilchoan.

The surrounding area is well known for its natural scenery and outdoor pursuits, with opportunities for walking, coastal exploration, fishing and wildlife watching across the Ardnamurchan peninsula and the wider Highland landscape.




Solicitors & Estate Agents

Tel. 01292 430 555
www.mcewanfraserlegal.co.uk
info@mcewanfraserlegal.co.uk

Part
Exchange
Available



Text and description
MARIE WOOD
Surveyor



Layout graphics and design
ALLY CLARK
Designer

Disclaimer: The copyright for all photographs, floorplans, graphics, written copy and images belongs to McEwan Fraser Legal and use by others or transfer to third parties is forbidden without our express consent in writing. Prospective purchasers are advised to have their interest noted through their solicitor as soon as possible in order that they may be informed in the event of an early closing date being set for the receipt of offers. These particulars do not form part of any offer and all statements and photographs contained herein are for illustrative purposes and are not guaranteed or warranted. Buyers must satisfy themselves for the accuracy and authenticity of the brochure and should always visit the property to satisfy themselves of the property's suitability and obtain in writing via their solicitor what's included with the property including any land. The dimensions provided may include, or exclude, recesses intrusions and fitted furniture. Any measurements provided are for guide purposes only and have been taken by electronic device at the widest point. Any reference to alterations to, or use of, any part of the property does not mean that any necessary planning, building regulations or other consent has been obtained. A buyer must find out by inspection or in other ways that all information is correct. None of the appliances/services stated or shown in this brochure have been tested by ourselves and none are warranted by our seller or MFL.