

24 Drummond Street

COMRIE, PERTSHIRE, PH6 2DS



*CHARMING 2 BEDROOM MAISONETTE WITH
GARDEN ACCESS & COSY COTTAGE APPEAL*



01738 500 655



www.mcewanfraserlegal.co.uk



info@mcewanfraserlegal.co.uk



Nestled in the heart of the charming Perthshire village of Comrie, 24 Drummond Street is a beautifully presented semi-detached main door maisonette offering a wonderful blend of cottage charm, comfort, and generous living space. With its warm and homely feel throughout, this inviting property is perfectly suited to those seeking character, practicality, and village living at its finest.

The welcoming entrance immediately sets the tone for the home, leading into bright and thoughtfully arranged accommodation. The living room is a truly standout space, light-filled and beautifully proportioned, centred around a charming log burner that adds warmth and character, making it the ideal place to relax and unwind.

The Property



To the rear, the spacious open kitchen provides excellent storage and ample workspace, creating a practical yet sociable setting for everyday living. With direct access to the garden, it offers the perfect connection between indoor and outdoor living.





The bathroom enjoys a fresh and airy atmosphere, enhanced by natural light from the window, and features a bath with a shower over and a stylish tiled splashback.





Upstairs, a generous hallway offers additional versatility with space for a reading nook, home working area, or additional storage. The property further benefits from two well-sized double bedrooms, both offering comfortable accommodation and plenty of natural light.

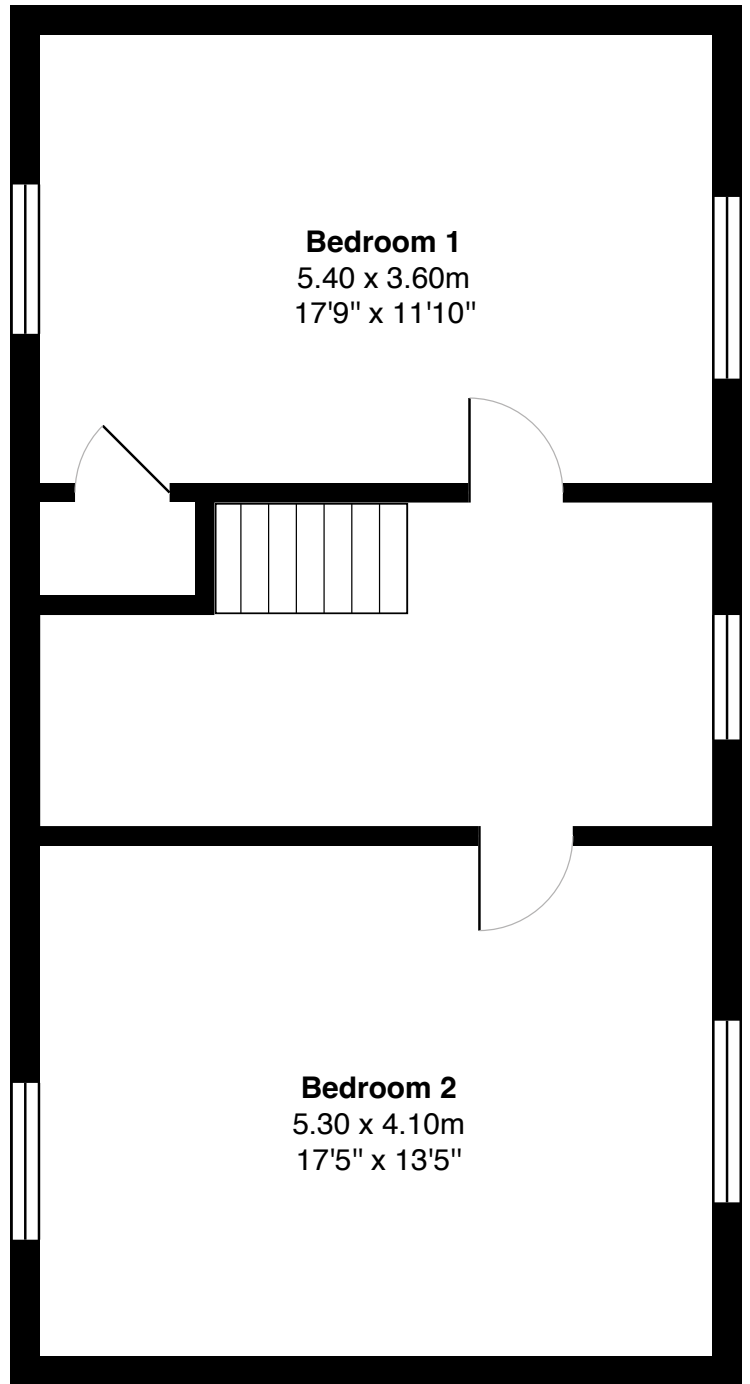
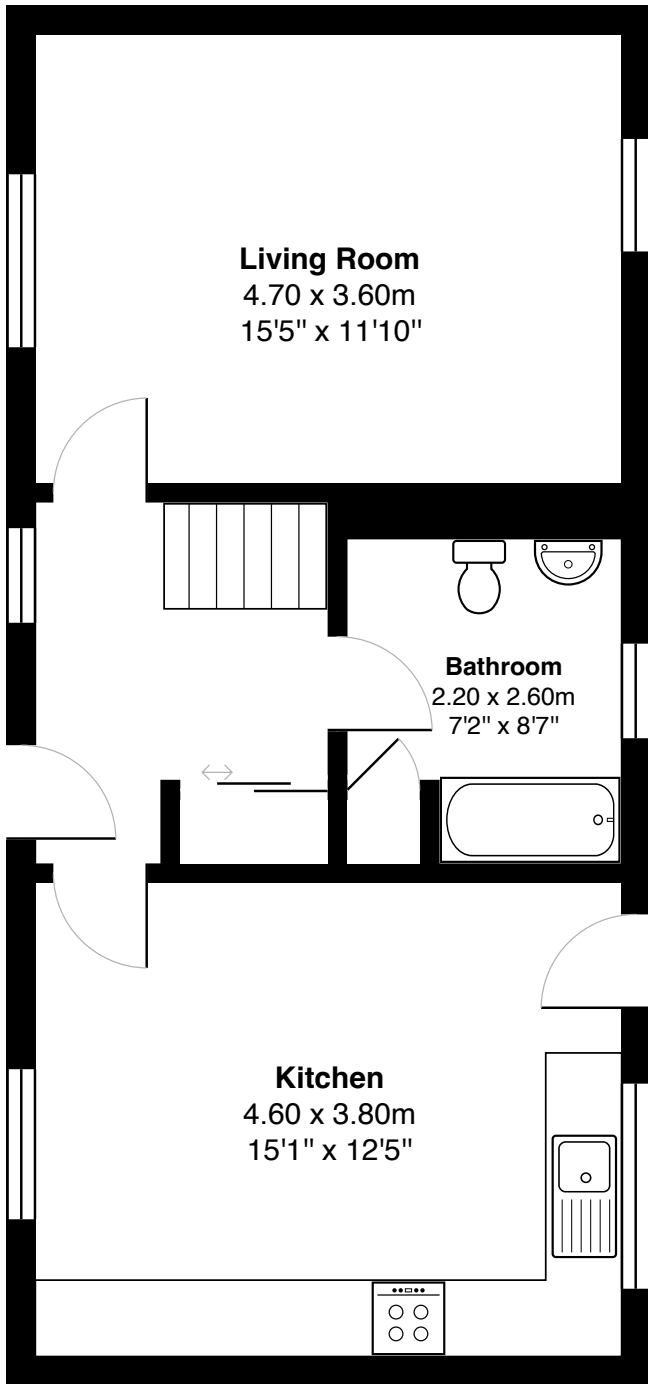




Bedroom 2







Gross internal floor area (m²): 107m²

EPC Rating: D



To the rear is an enclosed garden area with the possible option of a parking space. Combining cosy cottage appeal with spacious interiors and a fantastic village location, 24 Drummond Street is a property full of warmth, charm, and lifestyle appeal.

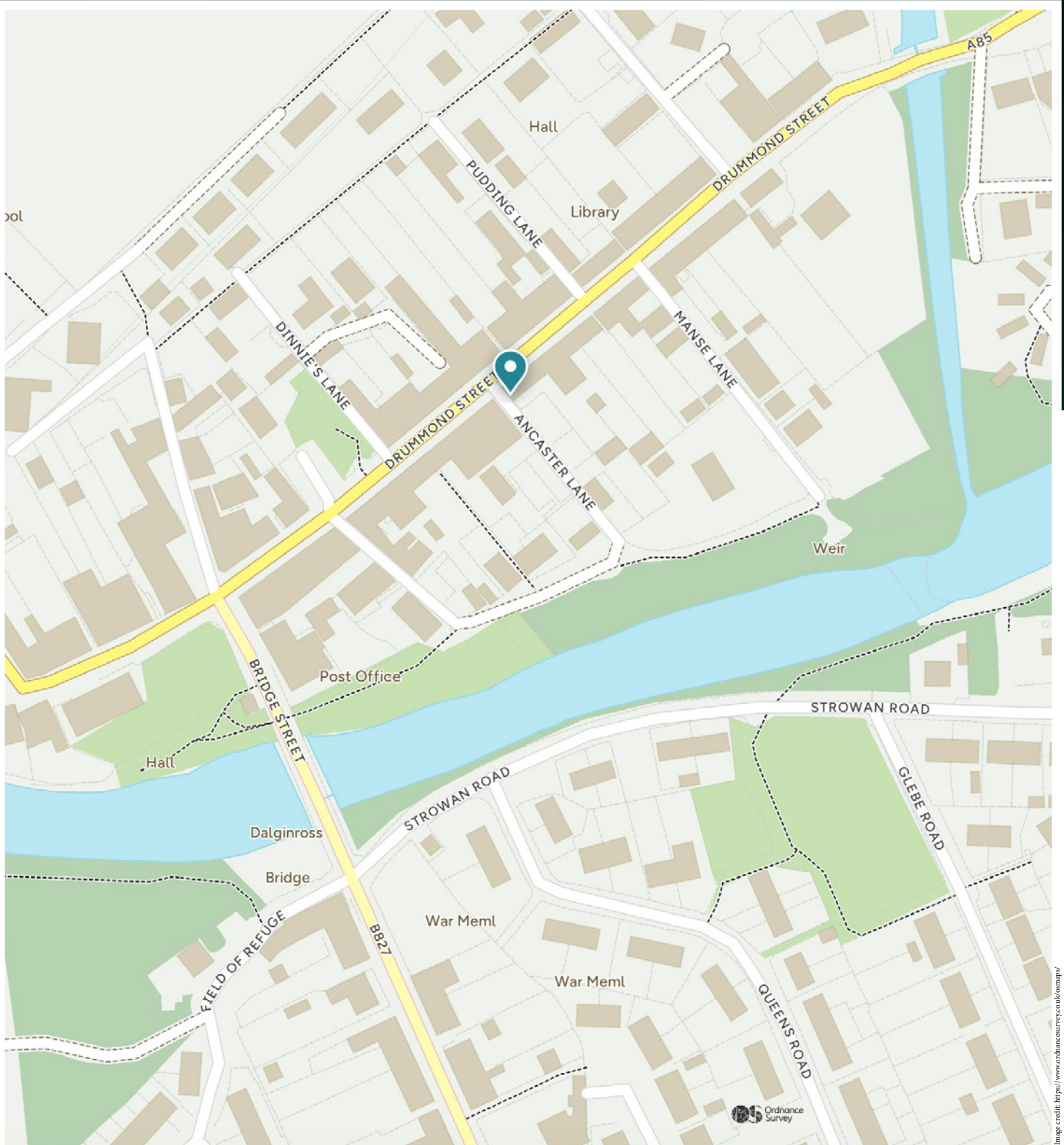




Situated in the heart of the highly desirable Perthshire village of Comrie, 24 Drummond Street enjoys a fantastic central location with a wonderful sense of community and scenic surroundings. Often referred to as the “Gateway to the Highlands”, Comrie is renowned for its charming character, beautiful countryside walks, and excellent local amenities.

The village offers a superb range of independent shops, cafés, restaurants, and everyday conveniences, all within easy walking distance of the property. Outdoor enthusiasts are particularly well catered for, with stunning woodland walks, cycling routes, riverside scenery, and access to nearby hills and lochs. Comrie also benefits from excellent road links to nearby towns including Crieff and Perth, making it an ideal location for those seeking a peaceful village lifestyle while remaining well connected.

The Location



McEwan Fraser Legal

Solicitors & Estate Agents

Tel. 01738 500 655

www.mcewanfraserlegal.co.uk

info@mcewanfraserlegal.co.uk



THE SUNDAY TIMES
THE SUNDAY TIMES



Text and description
ZARA GROSPELLIER
Surveyor



Professional photography
GRANT LAWRENCE
Photographer



Layout graphics and design
ALAN SUTHERLAND
Designer

Disclaimer: The copyright for all photographs, floorplans, graphics, written copy and images belongs to McEwan Fraser Legal and use by others or transfer to third parties is forbidden without our express consent in writing. Prospective purchasers are advised to have their interest noted through their solicitor as soon as possible in order that they may be informed in the event of an early closing date being set for the receipt of offers. These particulars do not form part of any offer and all statements and photographs contained herein are for illustrative purposes and are not guaranteed or warranted. Buyers must satisfy themselves for the accuracy and authenticity of the brochure and should always visit the property to satisfy themselves of the property's suitability and obtain in writing via their solicitor what's included with the property including any land. The dimensions provided may include, or exclude, recesses intrusions and fitted furniture. Any measurements provided are for guide purposes only and have been taken by electronic device at the widest point. Any reference to alterations to, or use of, any part of the property does not mean that any necessary planning, building regulations or other consent has been obtained. A buyer must find out by inspection or in other ways that all information is correct. None of the appliances/services stated or shown in this brochure have been tested by ourselves and none are warranted by our seller or MFL.