



# Ardmay House

The Bungalow, Ardmay, Arrochar, G83 7AH

Situated on the stunning shores of Loch Long, Ardmay Letting presents a rare opportunity to acquire a substantial waterfront site in the heart of Arrochar, one of Scotland's most scenic and sought-after outdoor destinations. Set against the dramatic backdrop of the Arrochar Alps and within easy reach of Loch Lomond & The Trossachs National Park, the property offers an exceptional combination of lifestyle, tourism, and investment potential.

The expansive site currently comprises two semi-detached bungalows, two 3-bedroom chalets, and an additional 2-bedroom chalet, all enjoying spectacular loch and mountain views. The property further benefits from a private beach frontage and a fantastic outdoor bar and TV entertainment area, creating a unique setting for guests and visitors to relax and enjoy the surrounding scenery. The generous grounds offer excellent potential for further accommodation or development, subject to the appropriate planning permissions, making this an exciting opportunity for investors, hospitality operators, or those seeking a unique waterfront retreat.





Three Bed Bungalow





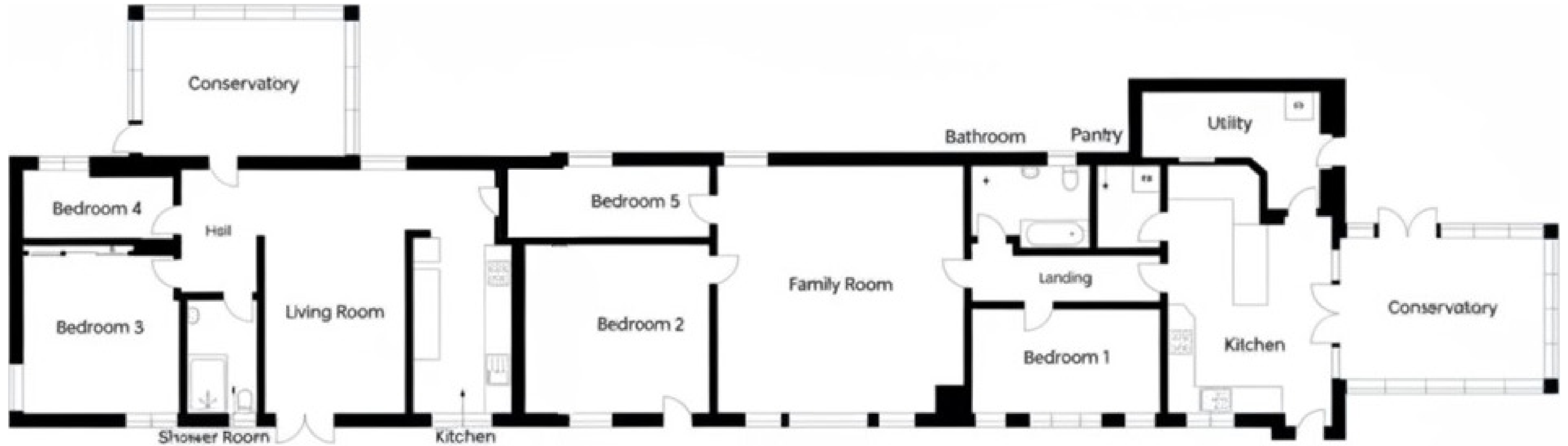




Two Bed Bungalow











Three Bed Chalet



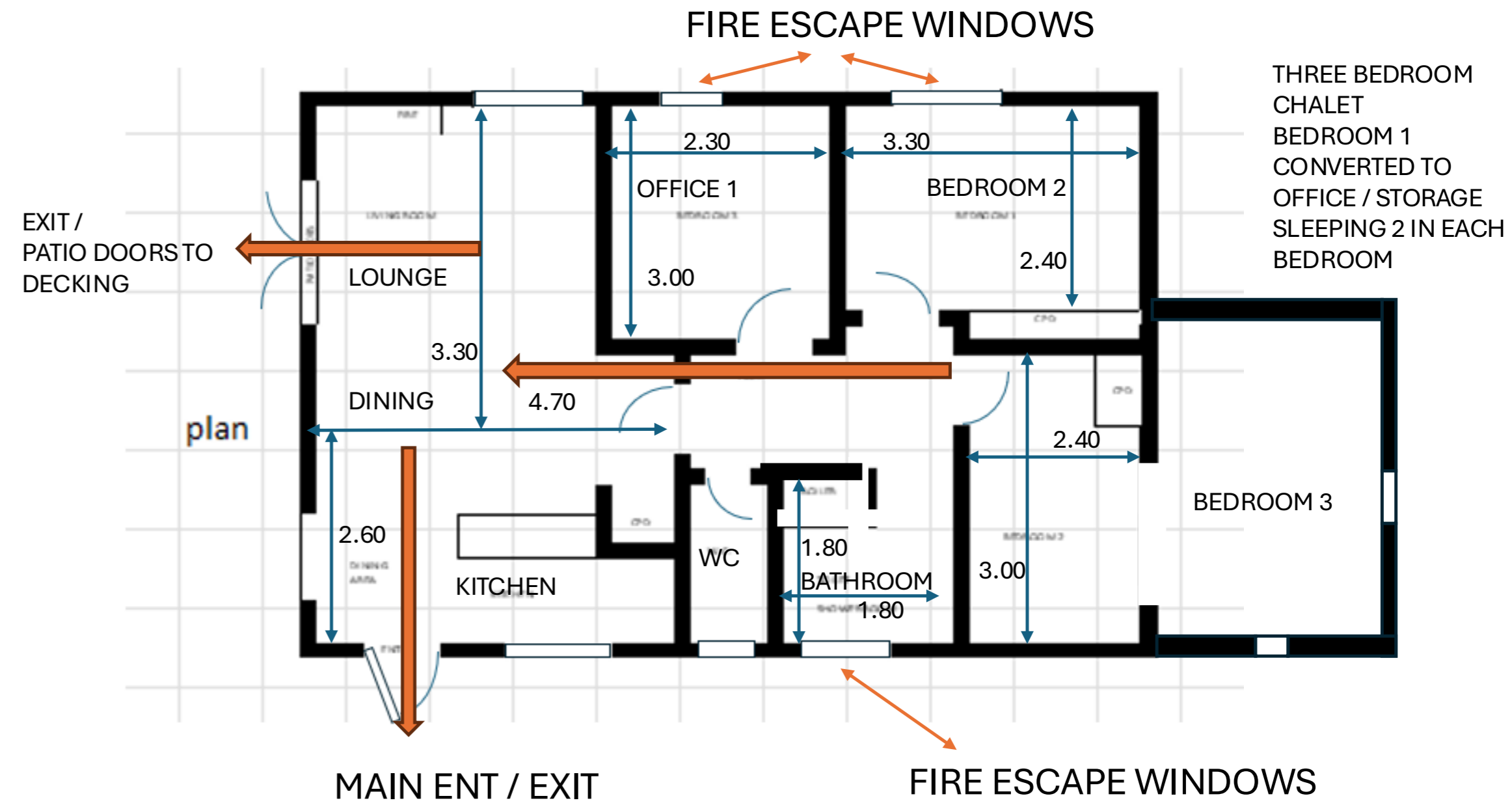




Two Bed Chalet

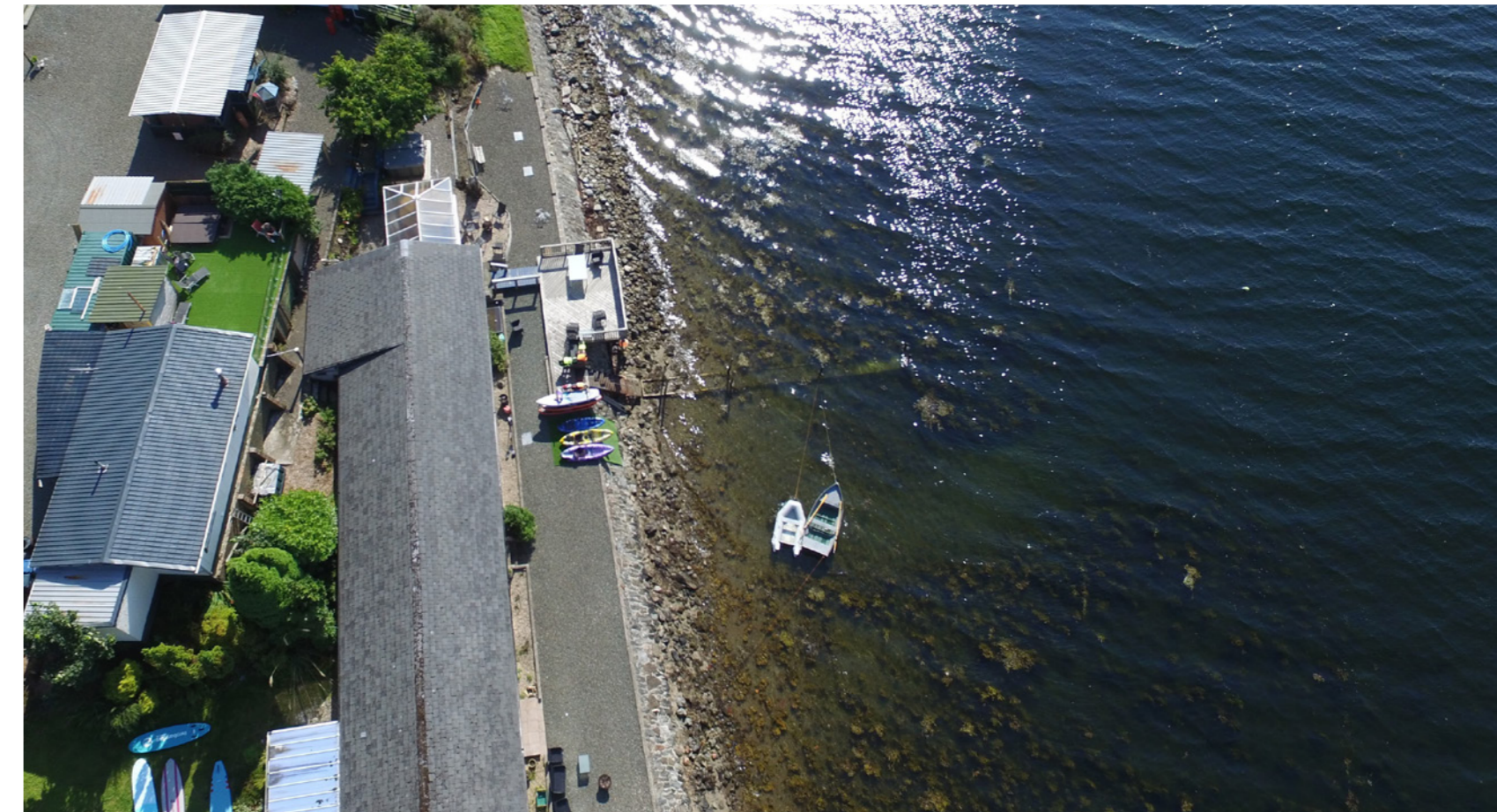


# ARDMAY LETTING CHALET PLAN OWNERS ACCOMMODATION





Arrochar is renowned for its outstanding outdoor pursuits, attracting visitors year-round for hiking, climbing, kayaking, paddleboarding, boating, fishing, cycling, and wild swimming. With direct access to Loch Long and numerous walking and biking routes nearby, the location is ideal for holiday accommodation or a lifestyle business catering to Scotland's thriving tourism market.



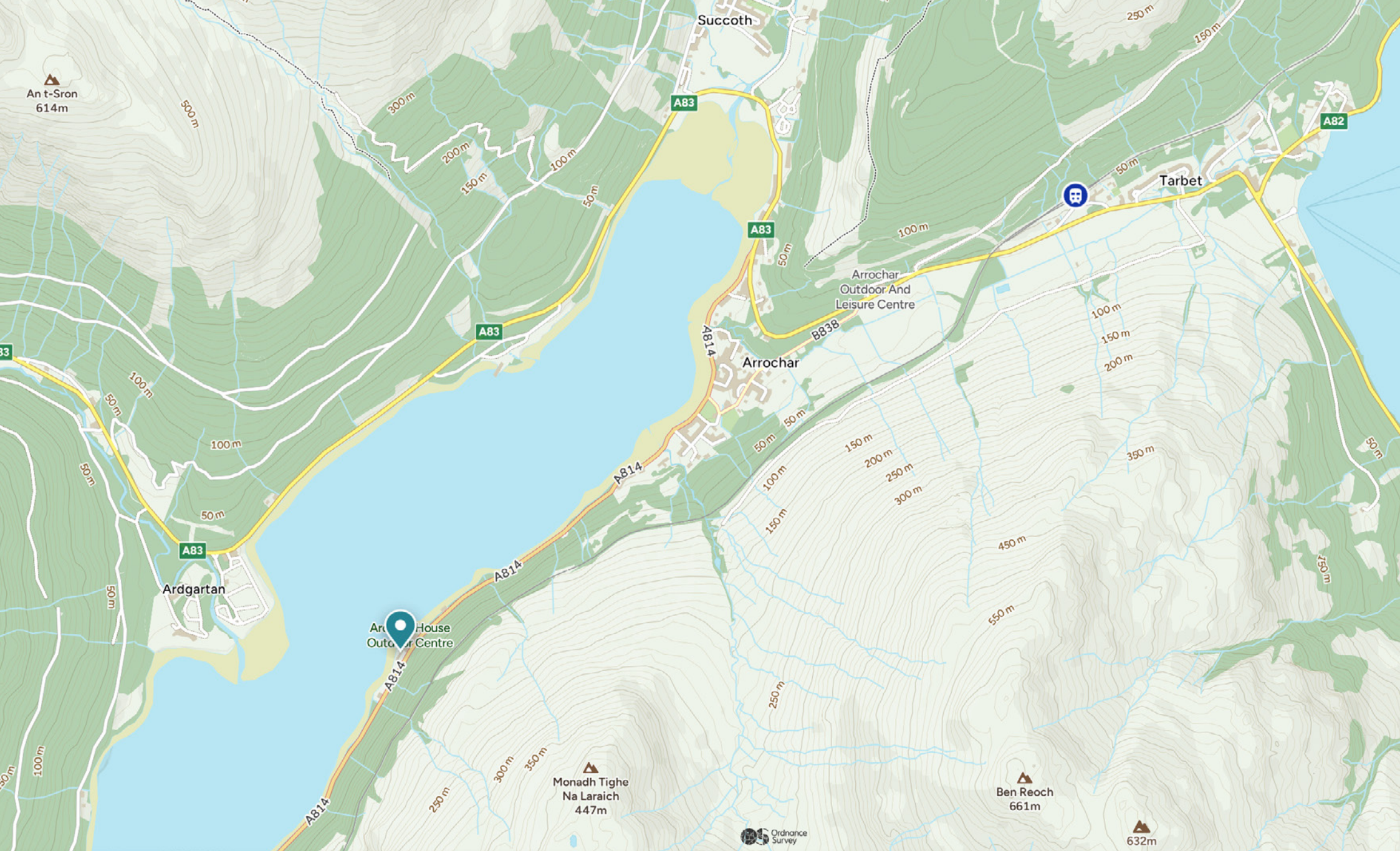
Despite its peaceful setting, Arrochar enjoys excellent transport links, with Glasgow accessible within approximately an hour, making it easily reachable for both domestic and international visitors. A truly unique lochside property offering breathtaking scenery, outdoor adventure, and significant future potential.



Arrochar is a picturesque village located at the head of Loch Long within the Loch Lomond & The Trossachs National Park, renowned for its breathtaking scenery and exceptional outdoor lifestyle. Surrounded by the dramatic peaks of the Arrochar Alps, the area is a popular destination for walkers, climbers, cyclists, and water sports enthusiasts from across the UK and beyond.

The village offers a range of local amenities including shops, cafés, restaurants, hotels, and transport links, while nearby Loch Lomond provides additional leisure facilities, marinas, golf courses, and visitor attractions. Outdoor pursuits are available year-round, with opportunities for hiking, kayaking, paddleboarding, sailing, fishing, wild swimming, and mountain biking all within easy reach.

Arrochar benefits from excellent road and rail connections, with Glasgow approximately one hour away, making it easily accessible whilst still offering the tranquillity and beauty of a true Highland setting. The area continues to attract strong tourism demand, making it highly desirable for holiday accommodation and lifestyle investment opportunities.



**Disclaimer:** The copyright for all photographs, floorplans, graphics, written copy and images belongs to McEwan Fraser Legal and use by others or transfer to third parties is forbidden without our express consent in writing. Prospective purchasers are advised to have their interest noted through their solicitor as soon as possible in order that they may be informed in the event of an early closing date being set for the receipt of offers. These particulars do not form part of any offer and all statements and photographs contained herein are for illustrative purposes and are not guaranteed or warranted. Buyers must satisfy themselves for the accuracy and authenticity of the brochure and should always visit the property to satisfy themselves of the property's suitability and obtain in writing via their solicitor what's included with the property including any land. The dimensions provided may include, or exclude, recesses intrusions and fitted furniture. Any measurements provided are for guide purposes only and have been taken by electronic device at the widest point. Any reference to alterations to, or use of, any part of the property does not mean that any necessary planning, building regulations or other consent has been obtained. A buyer must find out by inspection or in other ways that all information is correct. None of the appliances/services stated or shown in this brochure have been tested by ourselves and none are warranted by our seller or MFL.