



The Big Beach House

WHITING BAY, ISLE OF ARRAN, NORTH AYRSHIRE, KA27 8PZ



A BRIEF HISTORY OF

Whiting Bay

Some say Whiting Bay was so called because of the amount of whiting fish caught, a herring fishery also ran from here. At one point it had the longest pier in Scotland.

In Whiting Bay the Giants' graves - neolithic tombs from 4000 years ago, lay in the forest along with Viking forts. At Kingscross Point, a dun or fortified farmstead has been found dating back the better part of two thousand years. Kingscross was used by Vikings as a settlement and burial site, and it has been suggested that the bay to the south was named after them, with "Viking Bay" later becoming corrupted to Whiting Bay.

In 1263, the Vikings of King Haco's fleet anchored before the Battle of Largs. Arran, according to Irish tradition, was also the home of Manannan mac Lir, the God of the Sea.

Feb 1307 - Kingscross also achieved a footnote in history when it became the place from which Robert the Bruce sailed for Ayrshire in February 1307, en route to regaining control of his kingdom from the English. The pier in Whiting Bay was built in 1901 and became the longest pier in Scotland. It was dismantled in 1964.

The transformation of a group of tiny settlements into the Whiting

Bay we see today began with the establishment of a ferry to Saltcoats in 1790. This was followed from the 1830s by the arrival of steamers from Glasgow and elsewhere in the Clyde Estuary. Clearance of Arran's inland crofting areas from the 1830s produced a demand for more accommodation on the coast, here and elsewhere on the island.

Of all Arran's villages, Whiting Bay seems to have attracted the most "upmarket" clientele, and the result was a succession of fine villas being built along the landward side of the road running behind the bay. Meanwhile, a golf course was established in 1895, as were tennis courts, a bowling club and a putting green.

The building of a new pier in 1901, which allowed steamers to land passengers directly rather than via flit boats, only confirmed the growth of the village. During the war, a special boat called to take the lads off to war. A village hall was added in 1926.

As late as 1953, the main ferry serving Arran from the mainland called at Whiting Bay as well as Brodick, but the change to a Brodick-only service in 1954 led to a decline in the fortunes of Whiting Bay and the closure of the old steamer pier in 1957. Today the village pier is a very modest affair, projecting out from the shore close to the line of tiny shops backing onto the sea in the centre of the village.







” WITH *Views* TO THE VERY *southern point* OF (



Scotland







THE VILLAGE OF

Whiting Bay

Whiting Bay is located on the south east corner of the island and overlooks the Firth of Clyde, with views to the very southern point of Scotland. The village provides a newsagent, post office, pharmacy, two general food stores, café/bar, restaurant, bistro, hardware store and a farm shop. There is a craft outlet and art gallery, as well as a picturesque 18 hole golf course. Primary schooling is available in the village and secondary schooling is found at the High School in Lamlash. The surrounding area provides some of Arran's most scenic walks, not only along the shore line, but also through the forest to Glenashdale Falls

A large children's play area and sports field is two minutes from the house. This stunning spot is a bird watcher's paradise, with swans and other birds thronging the shore. They stay all winter. It all started with one person feeding a swan, which has subsequently become a regular hobby for the locals and, now, 4 or 5 generations of swans stay and enjoy the hospitality of Whiting Bay!

The Isle of Arran, approximately 167 square miles in area, is sometimes referred to as "Scotland in miniature", as it is divided into highland and lowland areas by the Highland Boundary Fault. The island is a popular destination for geologists, due to the substantial volcanic activity around 16 million years ago in the Tertiary period.

There are many stone circles and standing stones dating from Neolithic times, including those on Machrie Moor and the Giants Graves above Whiting Bay. Arran is approximately 60 miles in circumference and has some of the finest scenery in Scotland, with excellent walking, rambling and sea and trout fishing. Tourist attractions include Arran Aromatics, Arran Heritage Museum, Lochranza Distillery and Brodick Castle. There are seven golf courses on the island with 'The Big Beach House' ideally positioned for easy access to Whiting Bay Golf Club and Lamlash Golf Club.











LIFE IS

Good

AT THE

Beach

A BRIEF HISTORY OF

The Big Beach House

Whilst researching the History of The Big Beach House, the current owners put an advert in the local paper - The Arran Banner - and received a call from the grand-daughter of the original builder. She is now over 80 years old. Her grandparents were married in the house, she was christened in it and her daughter was also married there.

The house was built in 1904 by Alexander Reid and the name 'Ter-a-gram' (Pronounced like Telegram) is carved on the front. The front part of the house was once used as a Post Office and it's height above sea-level is marked on some old maps.

He built a row of large boarding houses along

the shore front and some higher up the hill in Whiting Bay. He called most of his houses unusual names. 'Ter-a-gram' is actually the name of his wife Margaret spelled backwards. Another house further down the row was called 'Nia-roo' which was "Oor-ain" (our own) backwards.

The house became the 'Cameronia Hotel' when it was purchased by Mr Cameron. It was run as a public house and a boarding house. In more recent times, there was also a Chinese restaurant upstairs.

Whiting Bay is still a great place to take a holiday and you can try reading the names of the houses and see if they make any more sense backwards.







The Open Plan Living Zone



THE Ground Floor

Conveniently positioned on the sea-front in Whiting Bay is this Edwardian detached villa, originally dating from 1904. Internally, the property has been comprehensively re-designed, re-worked and modernised in recent years and now offers versatile accommodation with nine bedrooms and seven bathrooms/en-suites, formed over three substantial levels. The property has two entrances, presenting the opportunity to divide the accommodation, if desired. The first and ground floors each have their own open-plan lounge/kitchen/diner, with log burning stoves and offer breathtaking sea-views of the Holy Isle and Firth of Clyde. The 'Big Beach House' is currently being used as luxury self-catering accommodation and is the perfect location for a large group or celebration and is able to sleep 20, but would equally make a wonderful family/holiday home. It has the added bonus of a separate, two bedroom, detached cottage (The Wee Beach House - ideal for holiday rentals or owners quarters) to the rear, which provides additional and comfortable living accommodation and further benefits from planning permission to alter and extend to the side aspect.

This property is as unique as it is beautiful. The traditional building has been carefully maintained both internally and externally, to create fantastic and flexible accommodation, which only a viewing will qualify and conforms to current fire regulations. The bespoke interior offers sophisticated living space, with exquisite detailing, which is inherent with a home of this age and character. The property is surrounded by easily maintained gardens. There is a driveway to the side providing off road parking for at least four vehicles, leading to the Wee Beach House.

The second floor (attic) was used by the previous owners as living quarters and requires a level of modernisation, but offers huge potential to create additional living accommodation if desired (STPP).





The Open Plan Kitchen

The Bedrooms





THE *bespoke* INTERIOR OFFERS *sophisticated*
LIVING SPACE WITH *exquisite detailing* “



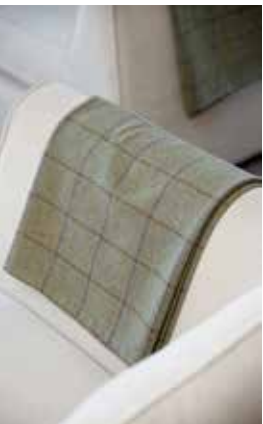




The Bathroom



THE
First Floor





The Open Plan Living Zone



The Open Plan Kitchen



The Bedrooms





comprehensively

redesigned, reworked
and modernised

AND IN RECENT YEARS

”











The Bathroom



Ground Floor



First Floor



Specifications



Approximate Dimensions (Taken from the widest point)

Ground Floor

Entrance Vestibule	
Open-plan Lounge/Diner/Kitchen	10.00m (32'10") x 7.30m (23'11")
Inner Hallway with Two Cupboard	
Utility	2.10m (6'11") x 0.70m (2'4")
Bedroom 1 (disabled access)	7.20m (23'7") x 4.10m (13'5")
En-suite Shower Room	2.50m (8'2") x 2.40m (7'10")
Bedroom 2	4.20m (13'9") x 2.90m (9'6")
En-suite Shower Room	1.70m (5'7") x 1.60m (5'3")
Bedroom 3	3.70m (12'2") x 2.70m (8'10")
Bedroom 4	3.20m (10'6") x 3.20m (10'6")
Bathroom	2.60m (8'6") x 2.10m (6'11")

First Floor

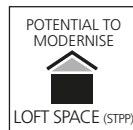
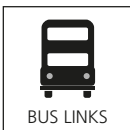
Open-Plan Lounge/Diner/Kitchen	10.00m (32'10") x 5.20m (17'1")
Bedroom 5	5.80m (19') x 4.50m (14'9")
En-suite Bathroom	3.00m (9'10") x 2.90m (9'6")
Bedroom 6	4.10m (13'5") x 3.00m (9'10")
Bedroom 7	4.40m (14'5") x 4.10m (13'5")
En-suite Shower Room	2.40m (7'10") x 1.20m (3'11")
Bedroom 8	3.40m (11'2") x 2.30m (7'7")
Bedroom 9	4.20m (13'9") x 2.90m (9'6")
<i>(Bedroom 9 has separate entrance and staircase - if desired)</i>	
En-suite Shower Room	2.20m (7'3") x 1.80m (5'11")
Bathroom 2	2.80m (9'2") x 2.30m (7'7")

Attic Floor

Lounge	5.00m (16'5") x 3.20m (10'6")
Attic Room 1	4.10m (13'5") x 3.20m (10'6")
Attic Room 2	6.10m (20') x 2.50m (8'2")
Shower Room	2.50m (8'2") x 2.50m (8'2")

Gross internal floor area (m²): 370m²

EPC Rating: G



The Wee Beach House







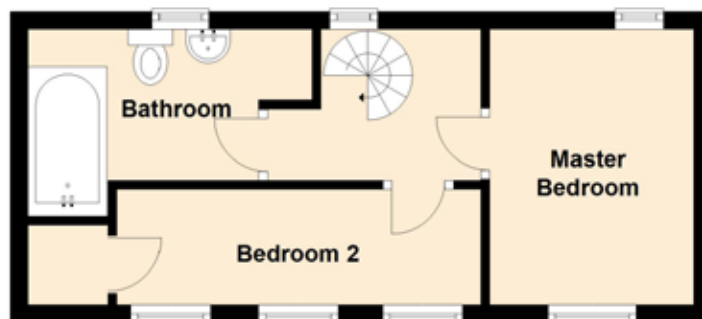
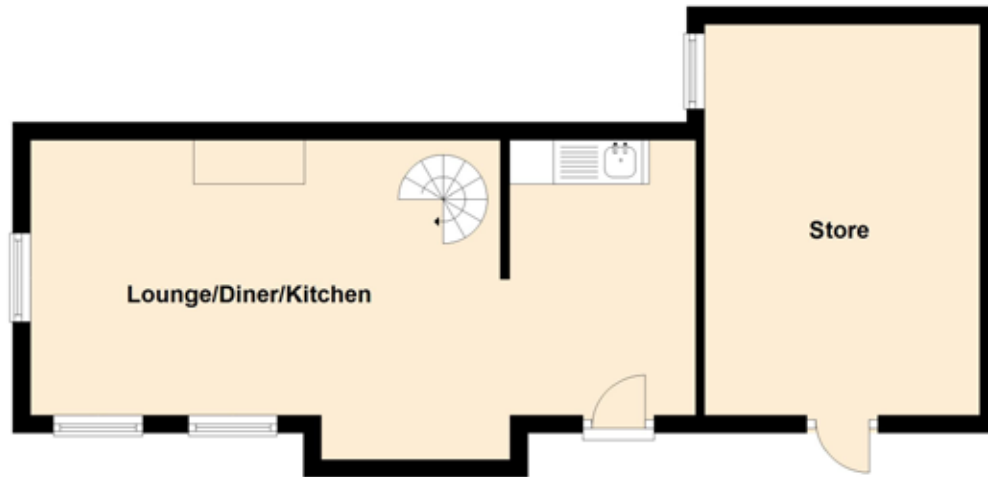
The Lounge & Diner & Kitchen





The Bedrooms & Bathrooms

Specifications



Approximate Dimensions (Taken from the widest point)

Open-plan Lounge/Diner/Kitchen <i>(with spiral staircase to first floor)</i>	7.50m (24'7") x 3.10m (10'2")
Master Bedroom <i>(on first floor)</i>	3.10m (10'2") x 2.30m (7'7")
Bedroom 2 <i>(on first floor)</i>	4.10m (13'5") x 1.30m (4'3")
Bathroom <i>(on first floor)</i>	3.20m (10'6") x 2.10m (6'11")
Store	4.40m (14'5") x 3.10m (10'2")
Electric Heating	

Gross internal floor area (m²): 47m²

EPC Rating: G

NB - Planning permission has been approved for a double storey extension to the side aspect. Plans available upon request.

Trade

We are advised that trading accounts are available to all interested parties

Fixtures and Fittings

A full inventory will be completed to detail all personal items excluded from the sale or items subject to a lease.

Website

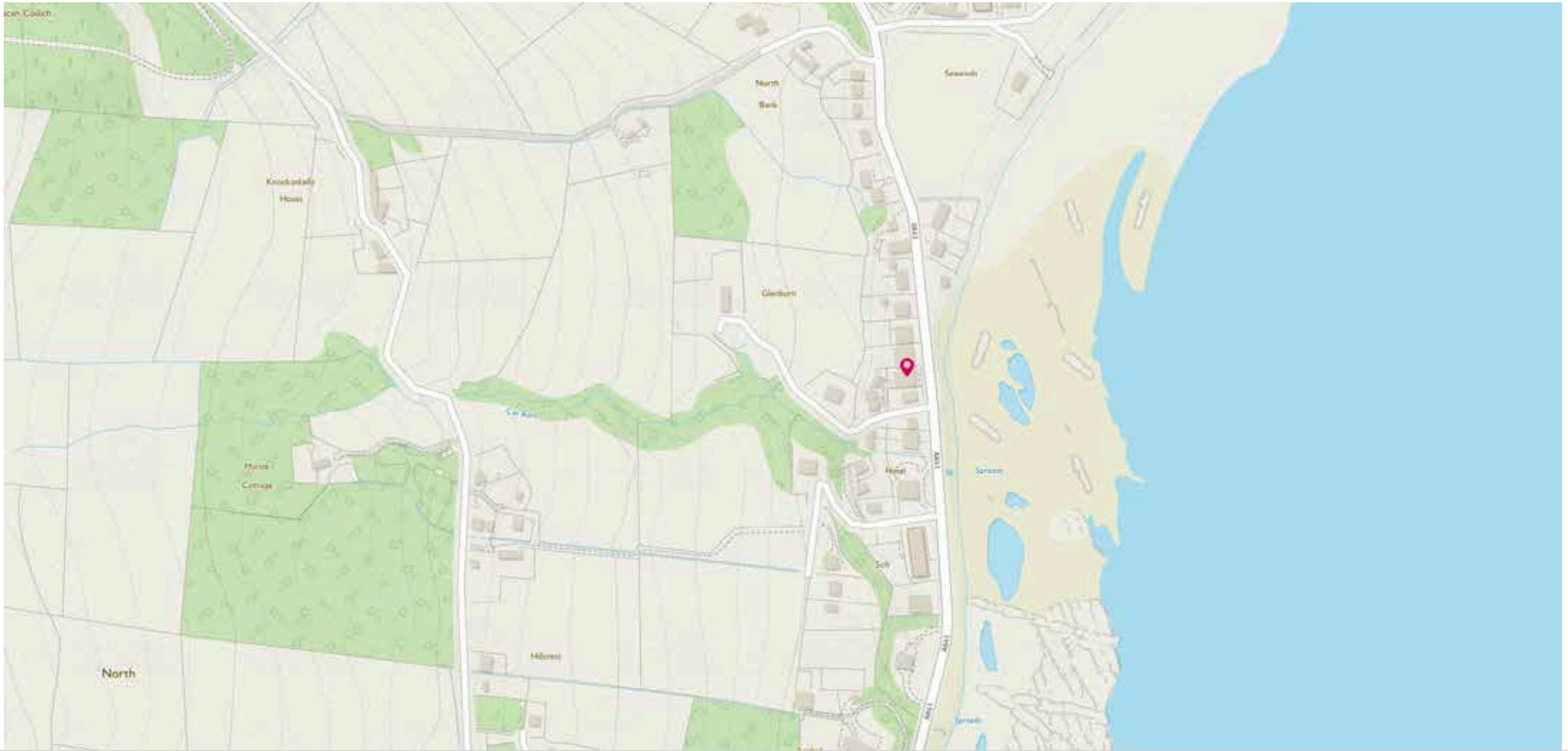
The present owner has already publicised the establishment, locally, nationally and internationally at www.bigbeachhouse.co.uk This means that anyone wishing to continue operating as a luxury self-catering business, will 'hit the ground running' as they will have immediate income/bookings at their disposal.

Price

The price will be complete with goodwill and trade contents but excludes personal items. Stock at valuation.

Viewing

For reasons of confidentiality, no direct approach may be made to the business. All viewings must be arranged through McEwan Fraser Legal.




McEwan Fraser Legal
Solicitors & Estate Agents

Tel. 01292 430 555
www.mcewanfraserlegal.co.uk
info@mcewanfraserlegal.co.uk

**Part
Exchange
Available**

Disclaimer: The copyright for all photographs, floorplans, graphics, written copy and images belongs to McEwan Fraser Legal and use by others or transfer to third parties is forbidden without our express consent in writing.

Prospective purchasers are advised to have their interest noted through their solicitor as soon as possible in order that they may be informed in the event of an early closing date being set for the receipt of offers. These particulars do not form part of any offer and all statements and photographs contained herein are for illustrative purposes and are not guaranteed. Buyers must satisfy themselves for the accuracy and authenticity of the brochure and should always visit the property to satisfy themselves of the property's suitability. The dimensions provided may include, or exclude, recesses intrusions and fitted furniture. Any measurements provided are for guide purposes only.



Text and description
DARREN LEE
Regional Manager



Professional photography
CRAIG DEMPSTER
Photographer



Layout graphics and design
ALLY CLARK
Designer