




McEwan Fraser Legal
Solicitors & Estate Agents
0141 404 5474

2/3, 3 St Andrews Close

GLASGOW, G41 1QG

2/3, 3 ST ANDREWS CLOSE

Glasgow, G41 1PG

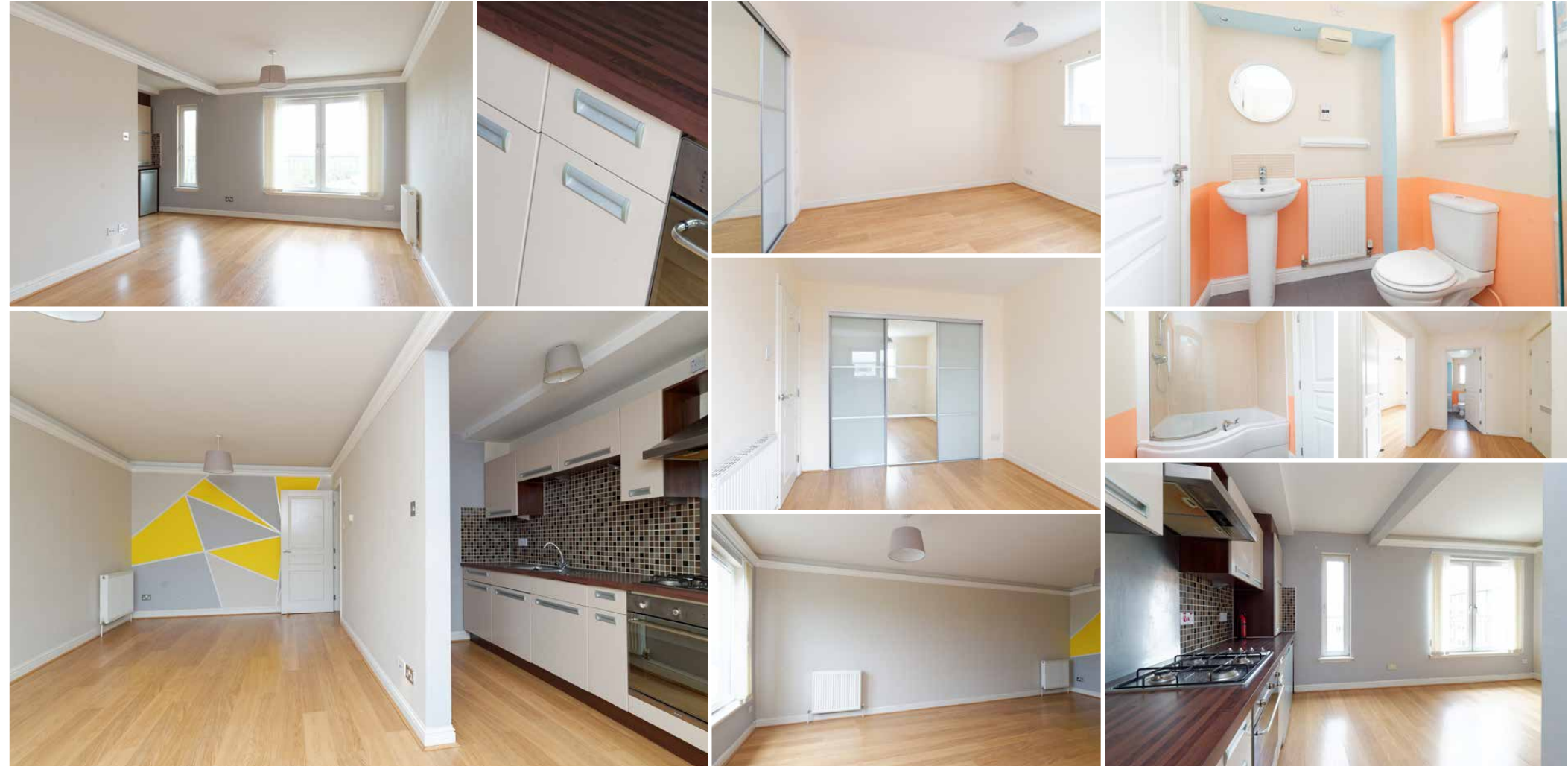
We are delighted to bring to the market this stunning one-bedroom apartment. Set in the heart of one of Glasgow's most popular south side modern developments 'The Junction'. In terms of value for money and location, these apartments certainly tick the boxes. Given the ever popular Pollockshields location, and the bright and airy spacious layouts, it is clear to see they offer real value for money flexible living space.

The property is presented in great decorative order throughout, having just been fully redecorated from top to bottom, leaving the new owners nothing to do, except move in and start enjoying the fantastic accommodation on offer.

The accommodation consists of a very spacious and immediately impressive open plan lounge/kitchen/diner with large windows that flood the room with natural light. The stylish kitchen area is finished in neutral tones and is fitted with a gas hob, electric oven, integrated dishwasher and washer drier and freestanding side by side fridge and freezer. It's has been designed for both style and functionality, and it is clear to see the open plan layout ensures the chef will never be far away from the party. The double bedroom in this apartment is bright and spacious with ample space for free-standing furniture and excellent built-in sliding wardrobes finished in mirrored and opaque glass doors. Finally, the property is completed by the stylish bathroom which is very contemporary and is finished with a mains shower over the bath and beautiful tiling to the walls.

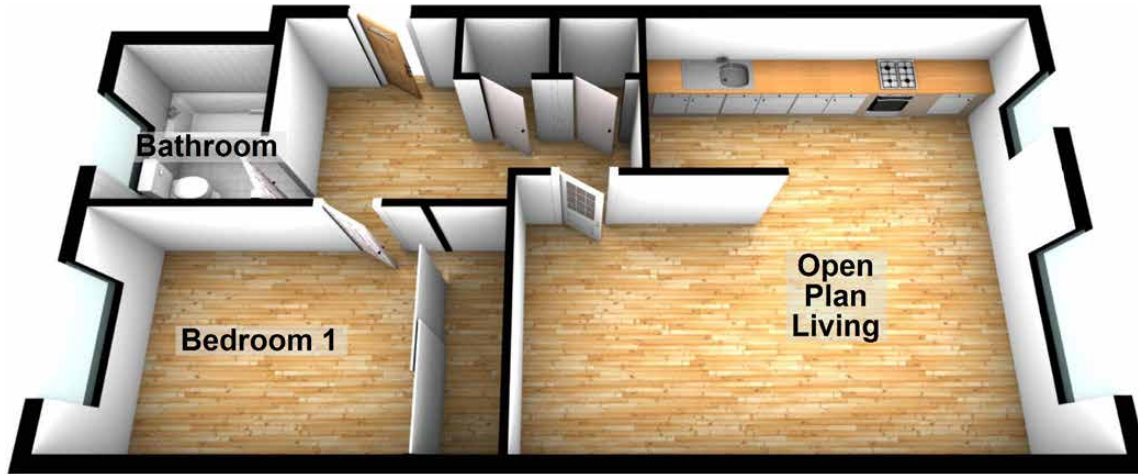
The apartment is kept warm, comfortable and secure courtesy of the double glazing, central heating and secure entry system. Residents parking is adjacent to the rear of the apartment. Externally the surrounding grounds are well kept.

Early viewing is strongly advised for first-time buyers or a Buy-To-Let investor looking for a great value for money apartment.



AN EXCELLENT ONE
BEDROOM APARTMENT

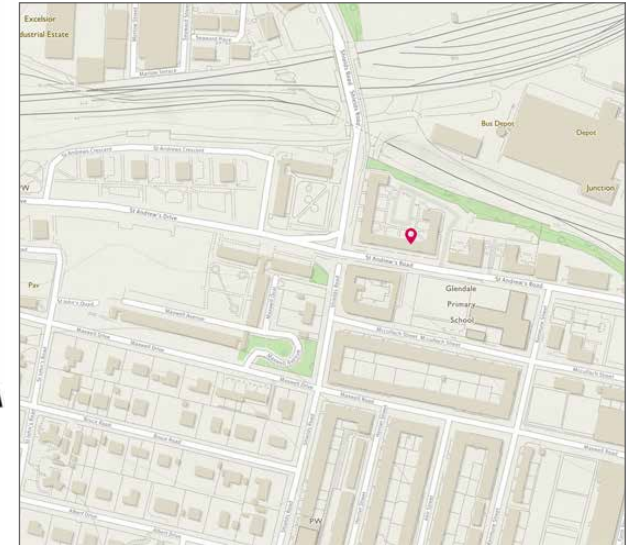
SPECIFICATIONS



Approximate Dimensions (Taken from the widest point)

Open Plan Living	6.50m (21'4") x 5.39m (17'8")
Bedroom 1	3.90m (12'10") x 2.80m (9'2")
Bathroom	2.10m (6'11") x 1.90m (6'3")

Gross internal floor area (m²): 54m² | EPC Rating: B



McEwan Fraser Legal
Solicitors & Estate Agents

Tel. 0141 404 5474
www.mcewanfraserlegal.co.uk
info@mcewanfraserlegal.co.uk

Part
Exchange
Available

Disclaimer: The copyright for all photographs, floorplans, graphics, written copy and images belongs to McEwan Fraser Legal and use by others or transfer to third parties is forbidden without our express consent in writing. Prospective purchasers are advised to have their interest noted through their solicitor as soon as possible in order that they may be informed in the event of an early closing date being set for the receipt of offers. These particulars do not form part of any offer and all statements and photographs contained herein are for illustrative purposes and are not guaranteed or warranted. Buyers must satisfy themselves for the accuracy and authenticity of the brochure and should always visit the property to satisfy themselves of the property's suitability and obtain in writing via their solicitor what's included with the property including any land. The dimensions provided may include, or exclude, recesses intrusions and fitted furniture. Any measurements provided are for guide purposes only and have been taken by electronic device at the widest point. Any reference to alterations to, or use of, any part of the property does not mean that any necessary planning, building regulations or other consent has been obtained. A buyer must find out by inspection or in other ways that all information is correct. None of the appliances/services stated or shown in this brochure have been tested by ourselves and none are warranted by our seller or MFL.



Text and description
KEN MEISAK
Surveyor



Professional photography
CRAIG DEMPSTER
Photographer



Layout graphics and design
ALAN SUTHERLAND
Designer

Image credit: <https://www.outlinecurvey.co.uk/omaps/>