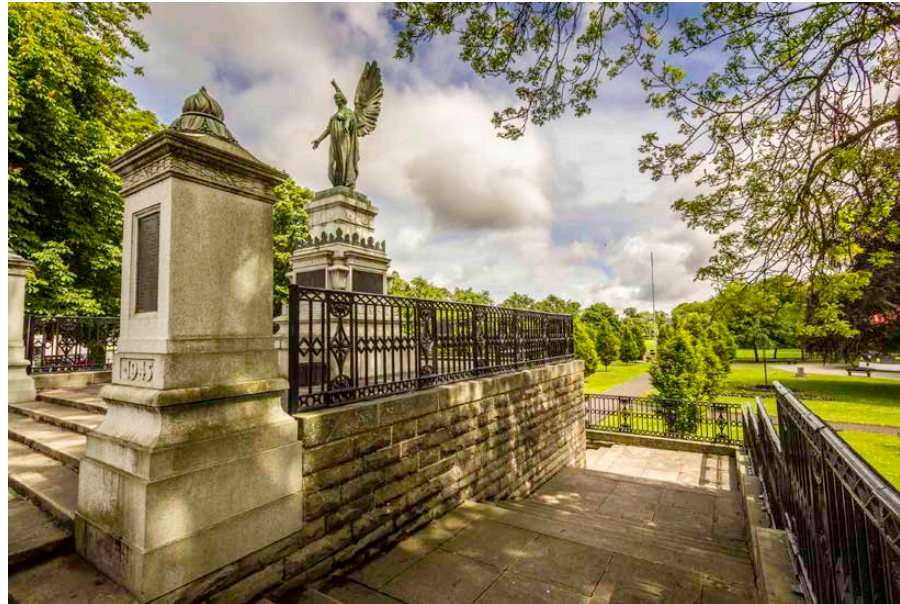





McEwan Fraser Legal
Solicitors & Estate Agents
01592 800 695

5 Beeches
LADYBANK, CUPAR, KY15 7LR



THE LOCATION

CUPAR, KY15 7LR

Located in the Howe of Fife, some five miles southwest of Cupar and approximately thirty minutes from St Andrews, the countryside surrounding Ladybank is peppered with golf courses to suit all abilities, indeed, Ladybank has its own championship course.

For those who have to commute rather than play, the railway station in Ladybank plays a major role with regular connections to Edinburgh, Dundee and Perth.

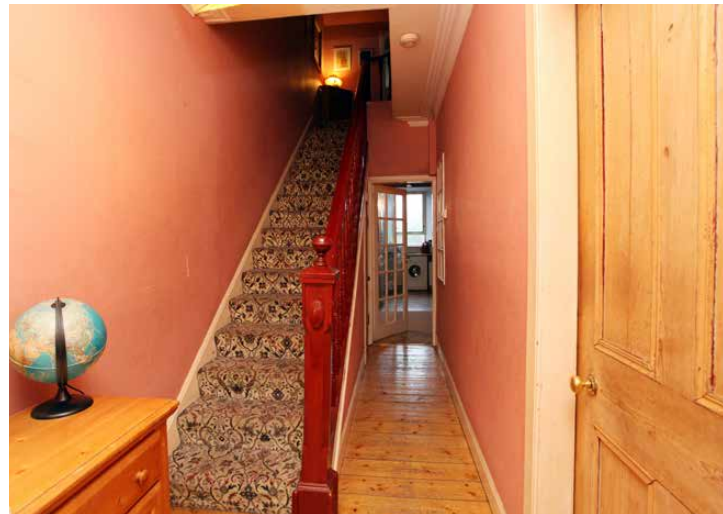
A thriving small community, Ladybank provides for most day to day necessities with the larger County town of Cupar lies just seven miles away and offers an excellent range of amenities with shops, schools, hotels and restaurants as well as a mainline railway station.

The area enjoys excellent accessibility with the cities of Edinburgh, Perth and Dundee all within a comfortable forty five minute drive.

From the coastal villages of the East Neuk to the Lomond hills, Ladybank offers a variety of outdoor pursuits and pastimes.

5 BEECHES

LADYBANK, CUPAR, KY15 7LR

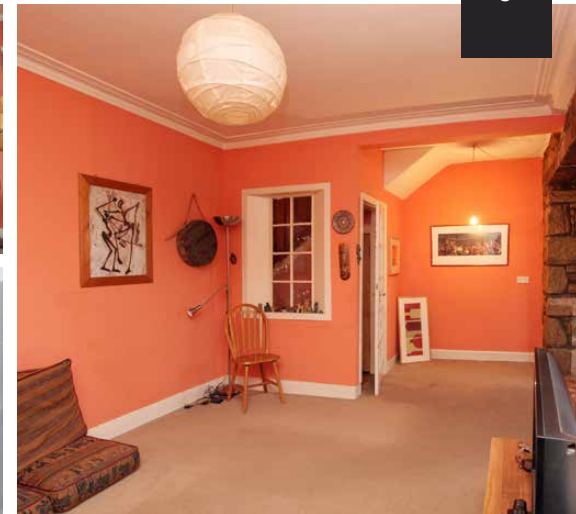


5 Beeches has a grand entrance into a vestibule which in turn leads to the large reception hall with the original balustrade leading to the upper level. The lounge is pleasantly located to the front of the property with a large window and feature fireplace. There is a large dining room to the rear leading through to the kitchen. Upon the first floor, there are three double bedrooms with ample storage and room for free-standing furniture if required. The three-piece family bathroom is also located on the upper level. There is ample storage throughout the entire property.

The property has traditional sash and case windows and benefits from gas central heating.

Off-street parking is provided by a driveway. The rear gardens have ample opportunities to extend.

This is a must-see property for investment or the potential to make a stunning family home.





SPECIFICATIONS & DETAILS

FLOOR PLAN, DIMENSIONS & MAP

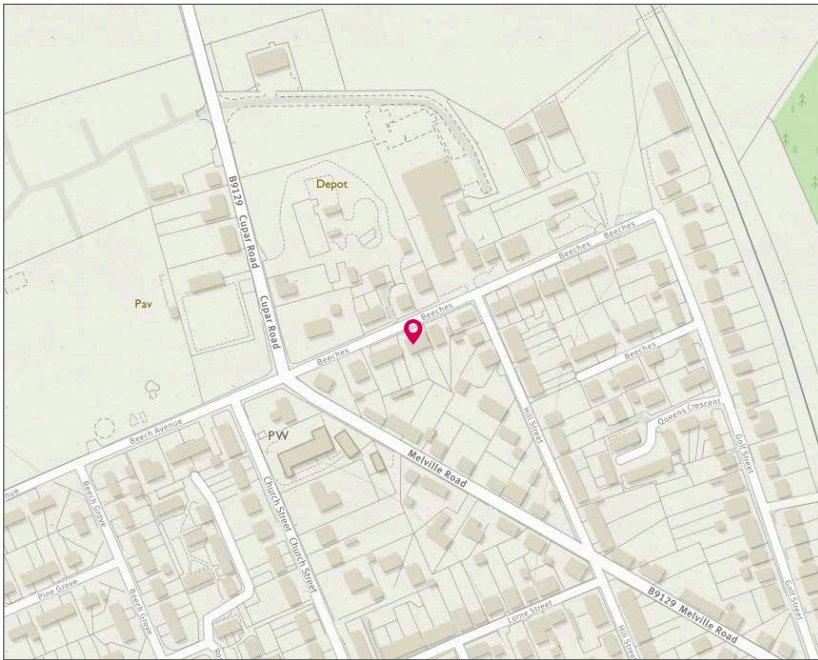


Approximate Dimensions (Taken from the widest point)

Vestibule	2.05m (6'9") x 1.80m (5'11")
Lounge	4.05m (13'3") x 4.00m (13'1")
Dining Room	6.20m (20'4") x 3.35m (11')
Kitchen	3.80m (12'6") x 3.25m (10'8")
Bedroom 1	4.00m (13'1") x 3.64m (11'11")
Bedroom 2	3.80m (12'6") x 3.64m (11'11")
Bedroom 3	3.80m (12'6") x 3.35m (11')
Bathroom	2.66m (8'9") x 2.17m (7'1")

Gross internal floor area (m²): 113m² | EPC Rating: F

Extras (Included in the sale): Light fittings.





McEwan Fraser Legal

Solicitors & Estate Agents

Tel. 01592 800 695
www.mcewanfraserlegal.co.uk
info@mcewanfraserlegal.co.uk

Part
Exchange
Available

Disclaimer: The copyright for all photographs, floorplans, graphics, written copy and images belongs to McEwan Fraser Legal and use by others or transfer to third parties is forbidden without our express consent in writing. Prospective purchasers are advised to have their interest noted through their solicitor as soon as possible in order that they may be informed in the event of an early closing date being set for the receipt of offers. These particulars do not form part of any offer and all statements and photographs contained herein are for illustrative purposes and are not guaranteed or warranted. Buyers must satisfy themselves for the accuracy and authenticity of the brochure and should always visit the property to satisfy themselves of the property's suitability and obtain in writing via their solicitor what's included with the property including any land. The dimensions provided may include, or exclude, recesses intrusions and fitted furniture. Any measurements provided are for guide purposes only and have been taken by electronic device at the widest point. Any reference to alterations to, or use of, any part of the property does not mean that any necessary planning, building regulations or other consent has been obtained. A buyer must find out by inspection or in other ways that all information is correct. None of the appliances/services stated or shown in this brochure have been tested by ourselves and none are warranted by our seller or MFL.



Text and description
JAY STEIN
 Surveyor



Professional photography
LEIGH ROLLO
 Photographer



Layout graphics and design
ALLY CLARK
 Designer