

  
**McEwan Fraser Legal**  
Solicitors & Estate Agents  
0141 404 5474

Block D, 3-2 350 Argyle Street

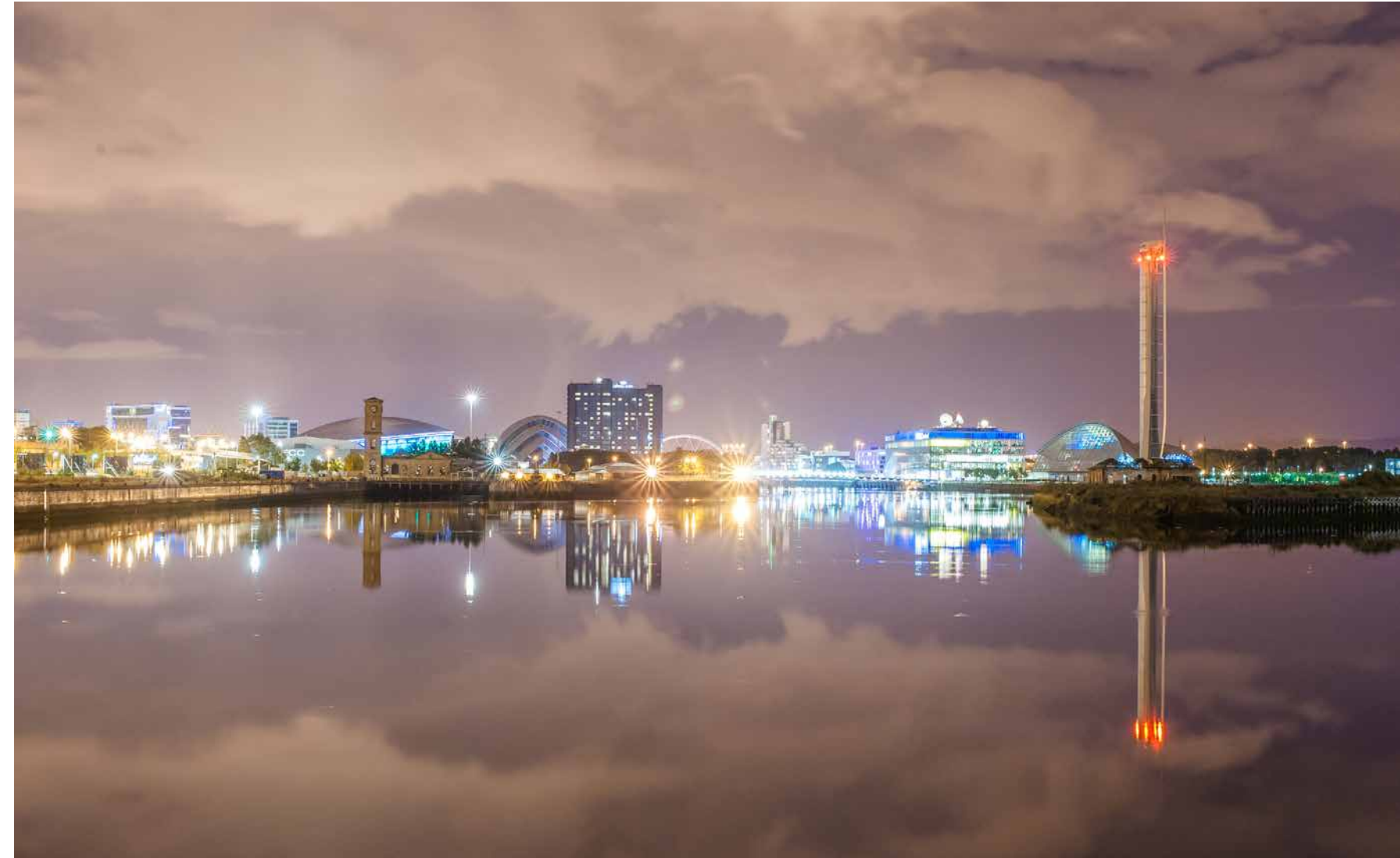
GLASGOW, G2 8NE



## THE LOCATION



This fantastic apartment is ideally placed for those who love city life. Perfect for both working and socialising, offering not only a great location but also great transport links to the M8/M74 motorways (5 minutes drive) and M77 allowing access to all corridors of central Scotland. Glasgow airport is only 15 minutes away by car/taxi. For those who love to indulge in a little retail therapy, the city boasts a plethora of some of the best brand names available anywhere in the UK. There is also an abundance of very fine private and state-run schools dotted within easy reach of the apartment at both primary and secondary level. Some of the most iconic landmarks Glasgow has to offer are right on your doorstep, including Scotlands music/concert venue the 'Hydro' less than a 10 minute walk away. Glasgow's trendy west end is less than 10 minutes away with its seemingly limitless choice of fine restaurants, bars and cafes.

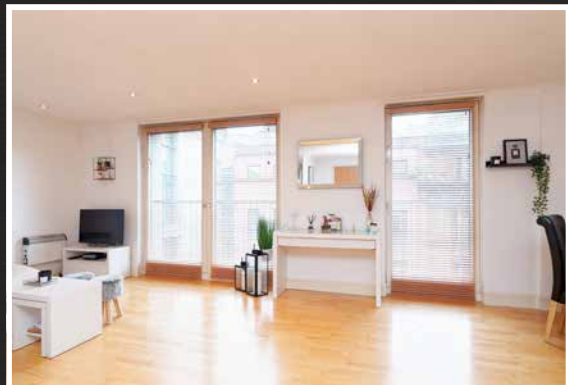
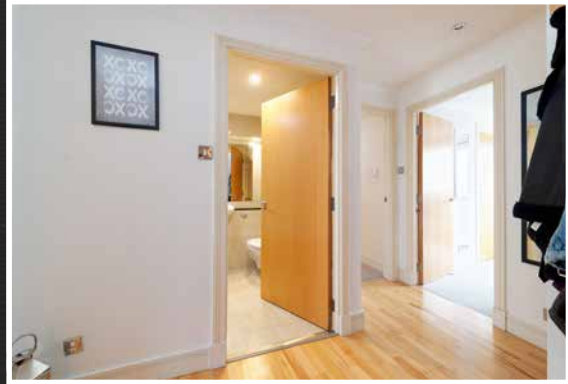




## THE PROPERTY

We are delighted to bring to the market this excellent 2 bedroom apartment. Set in the heart of Glasgow's thriving city centre and with easy transport links.

Internal accommodation comprises a large open plan lounge/kitchen/diner with wonderful large panoramic windows to front and Juliet balconies allowing light to flood the room. The excellent Aluminium style kitchen is well appointed with a 'Smeg' electric hob and oven and a free-standing washing machine with space for a free-standing dishwasher. The fully tiled bathroom is finished in a clean white suite with a shower over the bath. Bedroom one is a double with built-in wardrobes and room for freestanding furniture. The en-suite master bedroom is a good size containing built-in wood effect sliding wardrobes and room for free standing furniture. The tiled en-suite is finished in white with a standalone shower. There is a



handy storage cupboard off the spacious hallway.

The property also benefits from a secure door entry intercom system and is fully double glazed.

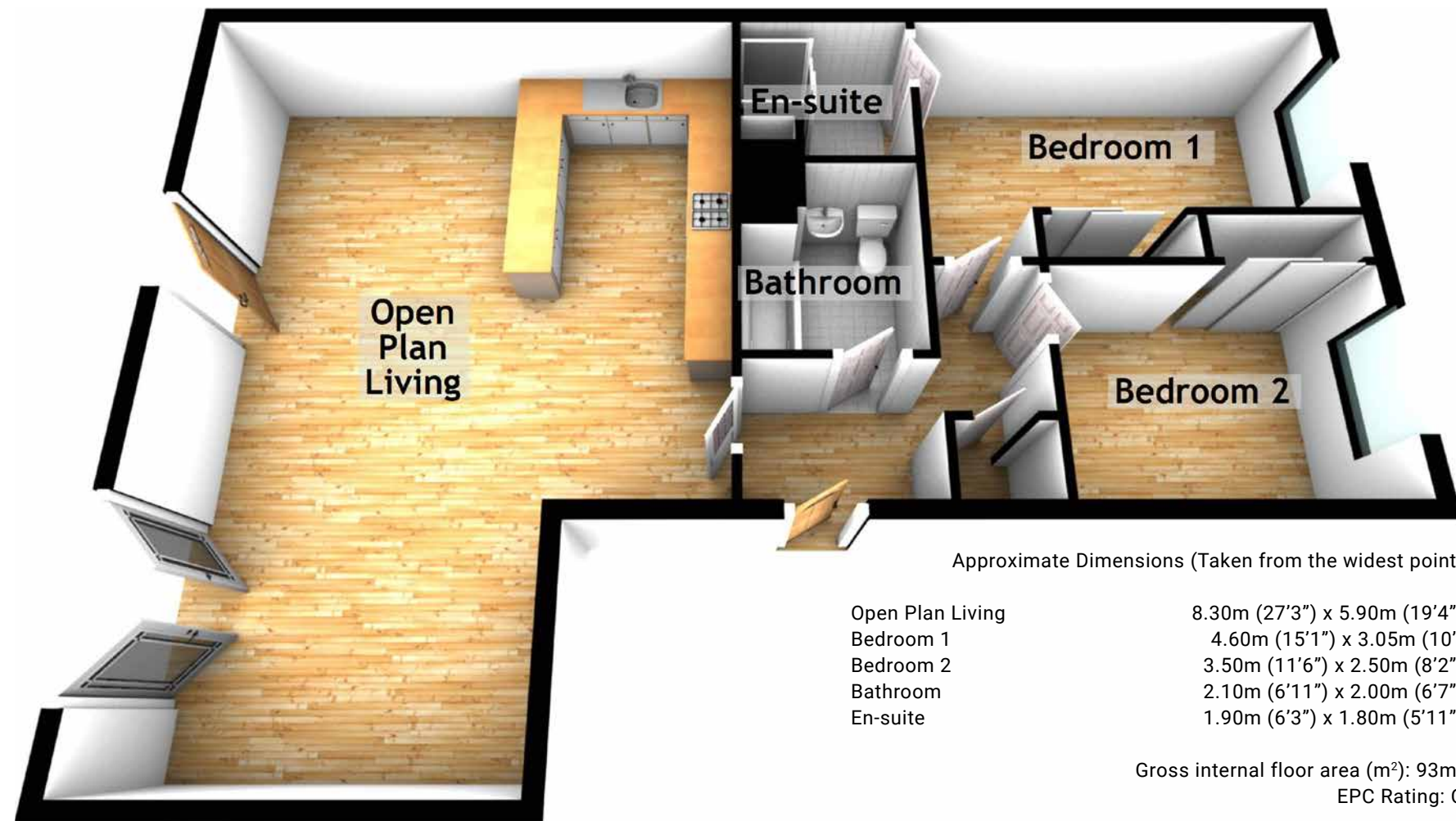
Early viewing is advised for this opportunity to own a great apartment in a fantastic city-centre location.







BLOCK D, 3-2 350 ARGYLE STREET, GLASGOW







# McEwan Fraser Legal

Solicitors & Estate Agents

Tel. 0141 404 5474  
[www.mcewanfraserlegal.co.uk](http://www.mcewanfraserlegal.co.uk)  
[info@mcewanfraserlegal.co.uk](mailto:info@mcewanfraserlegal.co.uk)

Part  
Exchange  
Available

**Disclaimer:** The copyright for all photographs, floorplans, graphics, written copy and images belongs to McEwan Fraser Legal and use by others or transfer to third parties is forbidden without our express consent in writing. Prospective purchasers are advised to have their interest noted through their solicitor as soon as possible in order that they may be informed in the event of an early closing date being set for the receipt of offers. These particulars do not form part of any offer and all statements and photographs contained herein are for illustrative purposes and are not guaranteed or warranted. Buyers must satisfy themselves for the accuracy and authenticity of the brochure and should always visit the property to satisfy themselves of the property's suitability and obtain in writing via their solicitor what's included with the property including any land. The dimensions provided may include, or exclude, recesses intrusions and fitted furniture. Any measurements provided are for guide purposes only and have been taken by electronic device at the widest point. Any reference to alterations to, or use of, any part of the property does not mean that any necessary planning, building regulations or other consent has been obtained. A buyer must find out by inspection or in other ways that all information is correct. None of the appliances/services stated or shown in this brochure have been tested by ourselves and none are warranted by our seller or MFL.



Text and description  
**LEWIS HUNTER**  
 Surveyor



Professional photography  
**CRAIG DEMPSTER**  
 Photographer



Layout graphics and design  
**ALAN SUTHERLAND**  
 Designer