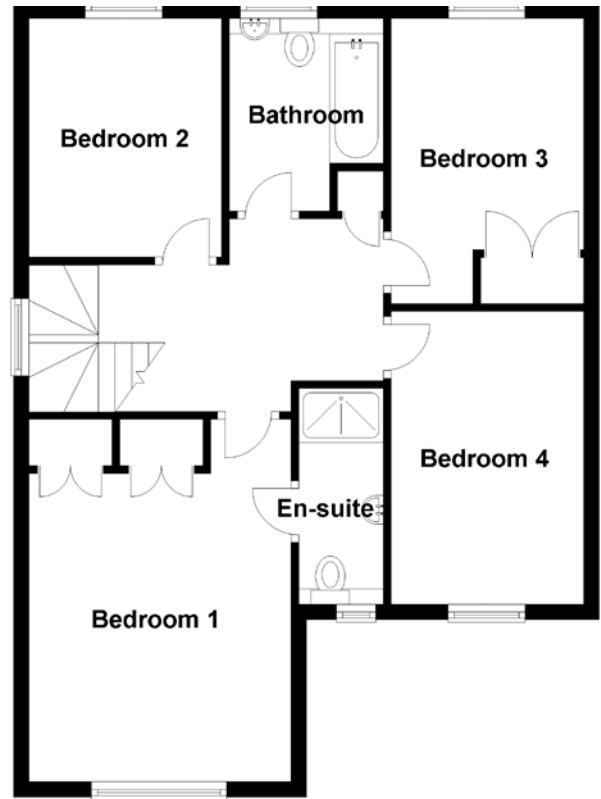
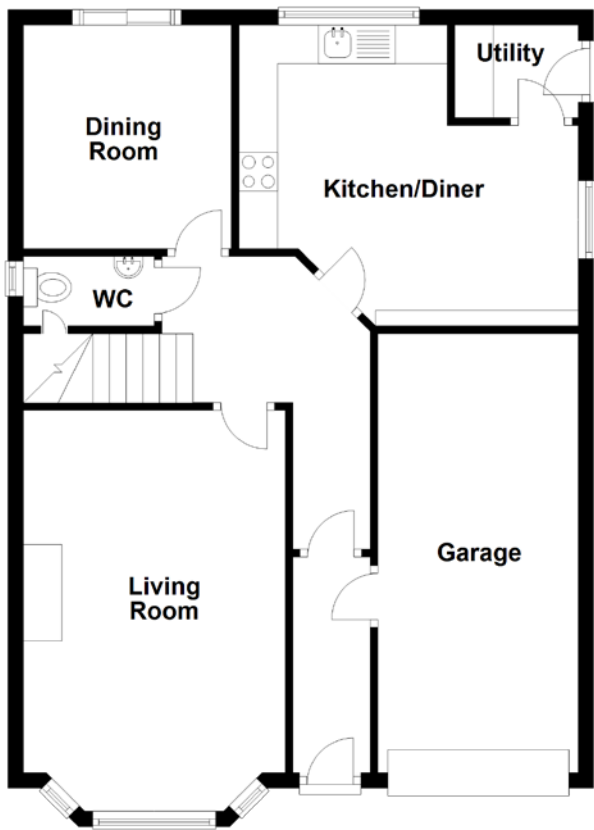


FLOOR PLAN, DIMENSIONS & MAP



Approximate Dimensions
(Taken from the widest point)

Living Room	5.20m (17'1") x 3.40m (11'2")
Dining Room	2.90m (9'6") x 2.70m (8'10")
Kitchen/Diner	4.40m (14'5") x 3.90m (12'10")
Utility	1.60m (5'3") x 1.20m (3'11")
WC	1.70m (5'7") x 0.90m (2'11")
Bedroom 1	4.10m (13'5") x 3.40m (11'2")

En-suite	2.80m (9'2") x 1.10m (3'7")
Bedroom 2	3.10m (10'2") x 2.50m (8'2")
Bedroom 3	3.70m (12'2") x 2.40m (7'10")
Bedroom 4	3.80m (12'6") x 2.40m (7'10")
Bathroom	2.50m (8'2") x 2.00m (6'7")
Garage	5.70m (18'8") x 2.60m (8'6")

Gross internal floor area (m²): 129m²
EPC Rating: C

