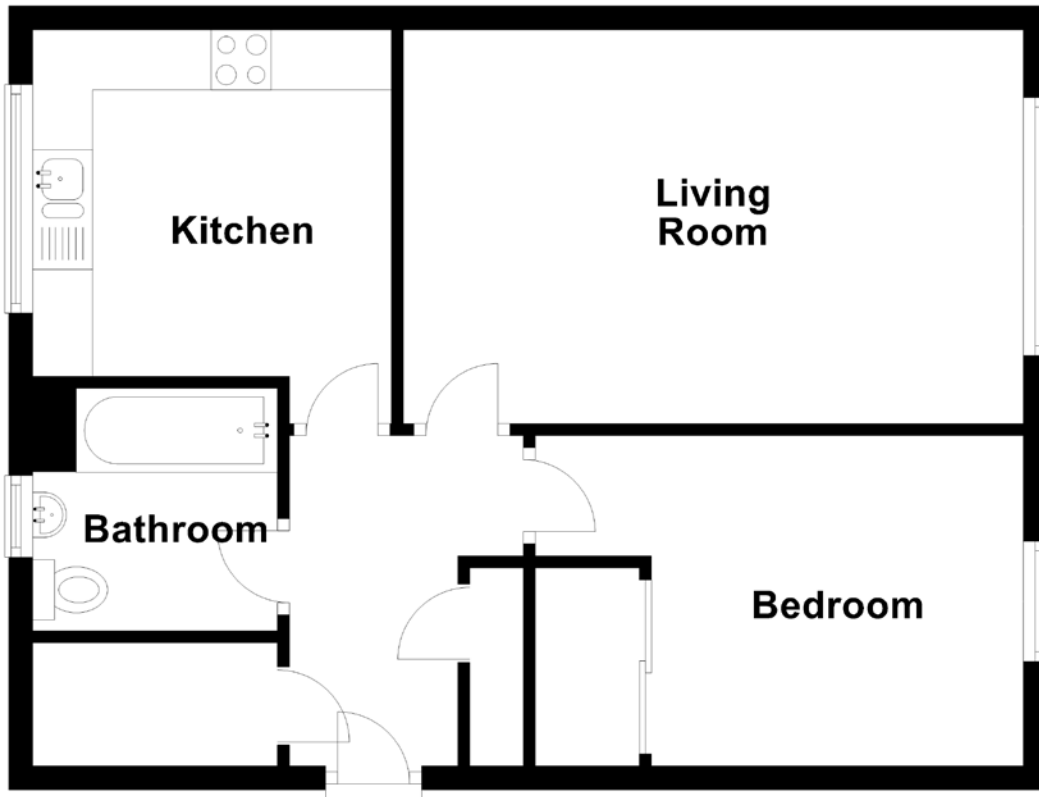


FLOOR PLAN, DIMENSIONS & MAP



Approximate Dimensions
(Taken from the widest point)

Living Room 5.17m (17') x 3.28m (10'9")
Kitchen 3.28m (10'9") x 2.99m (9'10")

Bedroom 4.07m (13'4") x 2.75m (9')
Bathroom 2.04m (6'8") x 2.02m (6'8")

Gross internal floor area (m²): 51m²
EPC Rating: C

