

4 Broompark Terrace

MURTHLY, PERTH, PH1 4HJ



*ONE BEDROOM SEMI-DETACHED BUNGALOW
WITH OPEN COUNTRYSIDE VIEWS*



0131 524 9797



www.mcewanfraserlegal.co.uk



info@mcewanfraserlegal.co.uk





Part exchange is available. Simply Fabulous! This one bedroom semi-detached bungalow has been offered to the market with a new kitchen with integrated fridge/freezer, slimline dishwasher, laundry machine, oven & hob. There is a new bathroom, new carpets and the whole property is freshly decorated. What else would you want? But wait! There is more, in the garden, there is a super summerhouse, new shed, gardens back and front and good parking.

Plenty of room for vegetable beds if you so desire. Open country space to one side of you and the village on the other.

Be quick! Properties such as these do not come on the market often and this one has had all the hard work taken out of it for you.

4 Broompark Terrace

the lounge



the kitchen

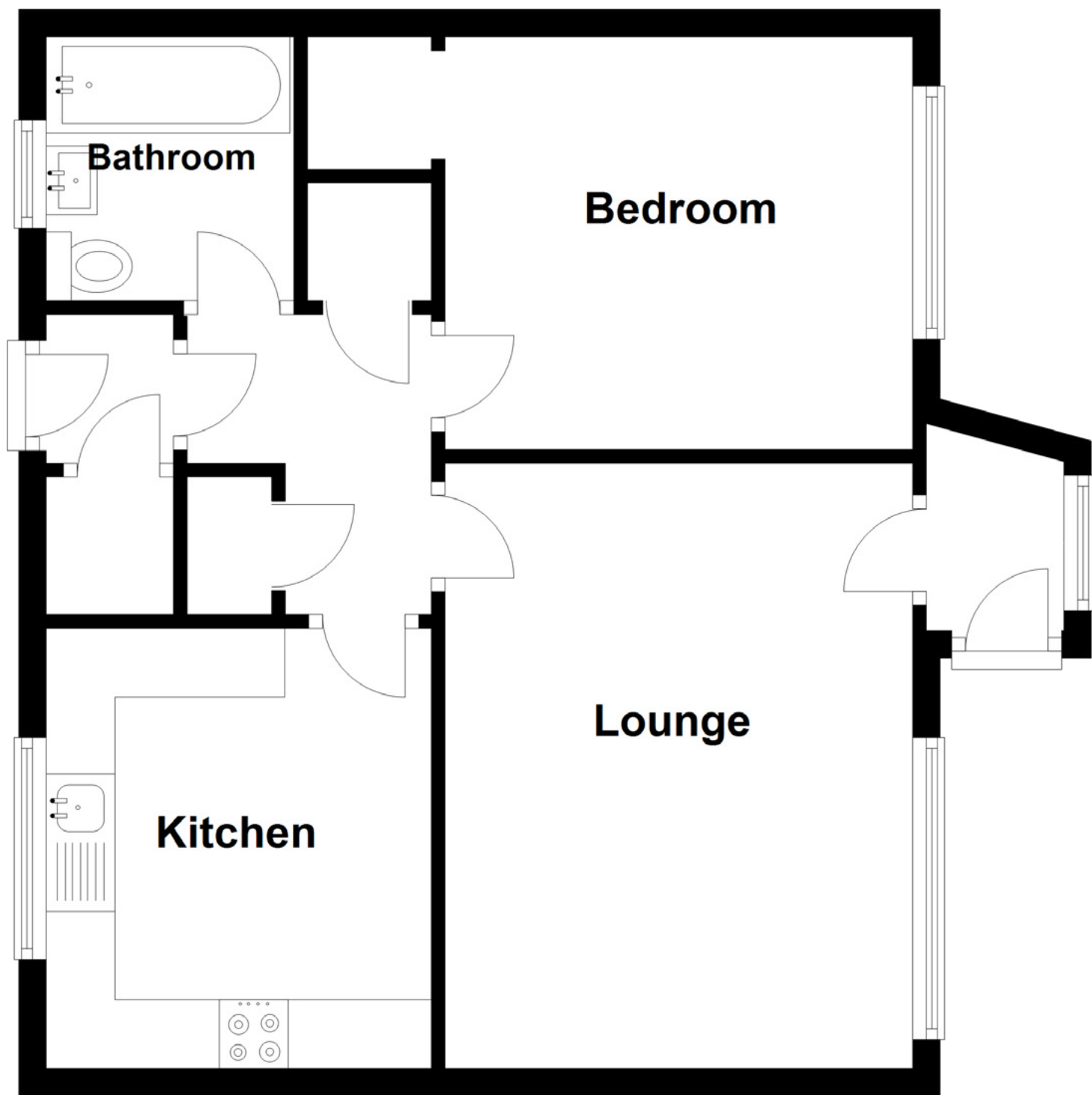




the bedroom







Approximate Dimensions
(Taken from the widest point)

Lounge	4.40m (14'5") x 3.40m (11'2")
Kitchen	3.20m (10'6") x 2.80m (9'2")
Bedroom	3.40m (11'2") x 3.00m (9'10")

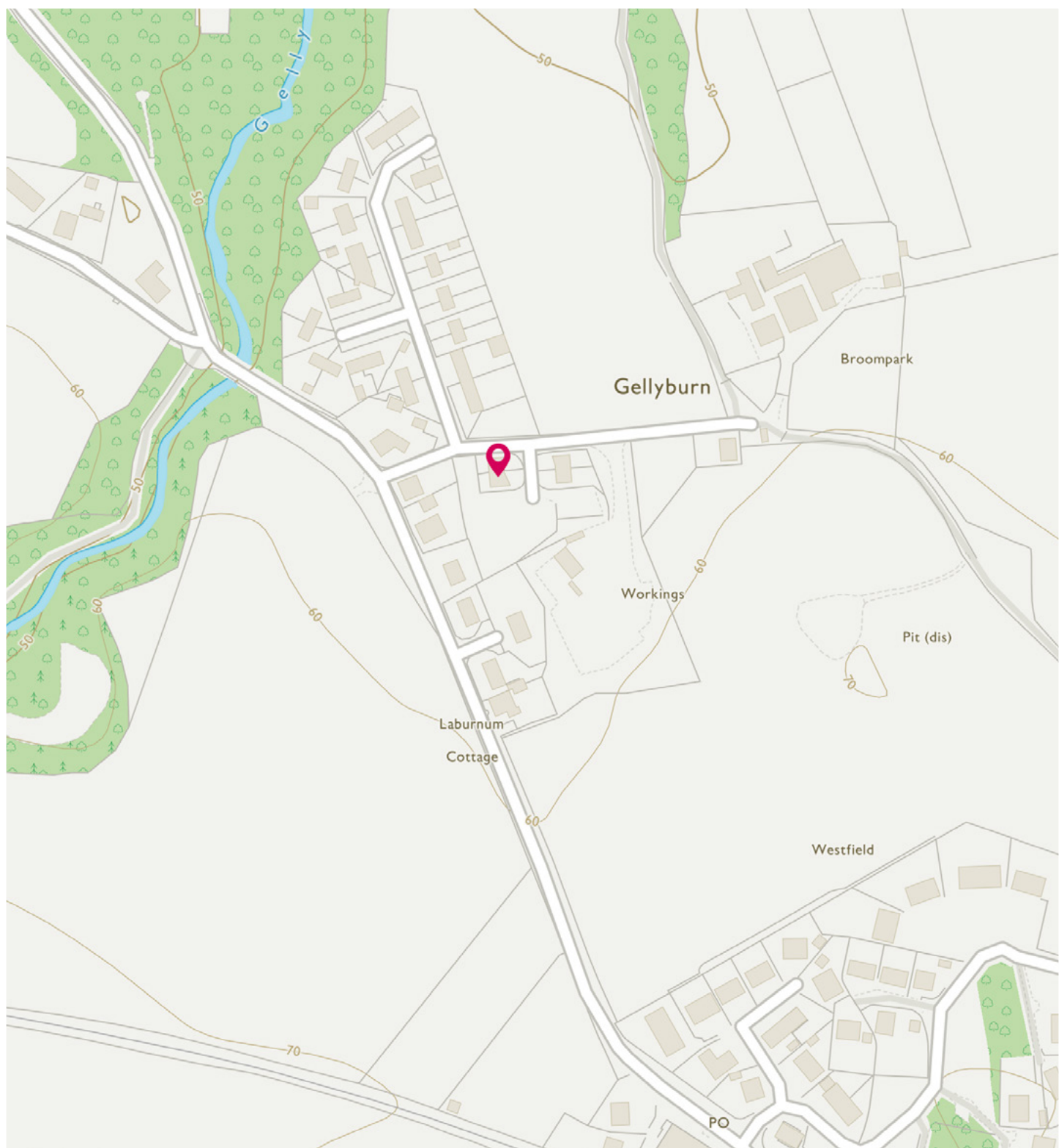
Bathroom	1.90m (6'3") x 1.80m (5'11")
Gross internal floor area (m ²): 48m ²	
EPC Rating: E	





The village of Murthly lies about 12 miles north of Perth with excellent access to the city via the new dual carriageway. Local facilities in Murthly include a primary school, post office and village store. The City of Perth offers an extensive range of shops, supermarkets, professional services and facilities. It also has excellent restaurants, museums and galleries as well as a sports centre, leisure centre, and ice rink. Perth theatre attracts many of the large touring shows and the newly constructed concert hall plays host to a variety of cultural events throughout the year. There is National Hunt racing and polo at Scone Palace and a number of popular golf courses nearby.

It is also the central point to Scotland's road network from where connections are made to Glasgow and Stirling in the west, Inverness and Aberdeen in the north, Dundee to the east and Edinburgh in the south. There is a railway station with links to Inverness, Aberdeen, Edinburgh and Glasgow.



McEwan Fraser Legal

Solicitors & Estate Agents

Tel. 0131 524 9797

www.mcewanfraserlegal.co.uk

info@mcewanfraserlegal.co.uk

Part
Exchange
Available



THE SUNDAY TIMES
THE SUNDAY TIMES



Text and description
JAYNE SMITH
Corporate Account Manager



Professional photography
ERIN MCMULLAN
Photographer



Layout graphics and design
ALAN SUTHERLAND
Designer

Disclaimer: The copyright for all photographs, floorplans, graphics, written copy and images belongs to McEwan Fraser Legal and use by others or transfer to third parties is forbidden without our express consent in writing. Prospective purchasers are advised to have their interest noted through their solicitor as soon as possible in order that they may be informed in the event of an early closing date being set for the receipt of offers. These particulars do not form part of any offer and all statements and photographs contained herein are for illustrative purposes and are not guaranteed or warranted. Buyers must satisfy themselves for the accuracy and authenticity of the brochure and should always visit the property to satisfy themselves of the property's suitability and obtain in writing via their solicitor what's included with the property including any land. The dimensions provided may include, or exclude, recesses intrusions and fitted furniture. Any measurements provided are for guide purposes only and have been taken by electronic device at the widest point. Any reference to alterations to, or use of, any part of the property does not mean that any necessary planning, building regulations or other consent has been obtained. A buyer must find out by inspection or in other ways that all information is correct. None of the appliances/services stated or shown in this brochure have been tested by ourselves and none are warranted by our seller or MFL.