

WHITEWOOD

MEADOWS

BALLINGRY, FIFE, KY5 8JW



IVANHOE
HOMES

**McEwan Fraser Legal**
Solicitors & Estate Agents



Computer generated images and photography are intended for illustrative purposes only

WHITEWOOD MEADOWS



This **unique development** of two and three-bedroom homes blends the **charm** and character of nearby Lochore Meadows with the comforts and luxury of **contemporary living** to create a **harmony** with the traditional styles of this popular Fife village.

Tucked away in its own private idyll, Whitewood Meadows is situated on the edge of the village overlooking the stunning Lochore Meadows. From here you can enjoy a brisk walk along the Meadows to the lake or maybe have a coffee in one of the local cafes. Opportunities to buy new homes in this area, finished to this standard, do not arise that often. Whitewood Meadows, ideal for young families as well as those downsizing.

This is an exceptional modern development by Ivanhoe Homes of 24 properties of two and three-bedroom terraced houses, in an environmentally friendly, luxury development. Whitewood Meadows has been designed as a unique space, that blends with its surroundings and nature. All homes feature energy-efficient construction, considered design and modern finishes. A ten-year warranty is included.

Each house is finished to the very highest specification and is offered with parking. All homes feature a fully fitted kitchen with a choice of units and worktops, with high-specification bathrooms and fixtures and

fittings. Choose a three-bedroom house and come home to an open plan, family-friendly living space, whilst the two-bedroom homes feature a separate living and kitchen.

Each 2 storey, terraced villa, is offered with solar panel energy efficiency, hand tiled roof and modern robust finishing, high performance double glazed locking windows, high-performance security front and backdoors, super-efficient gas central heating systems, mains connected smoke alarms, and modern radiators. This is living, Whitewood Meadows style.

Whitewood Meadows is sympathetically designed to create a delightful village community atmosphere surrounded by green spaces and shrub planting. There are 24 homes and each home offers a blend of traditional design and contemporary living, with private parking.

This is a select development, offering a range of two and three-bedroom homes. In all, there are 16 three-bedroom homes known as our Oak style and 8 two-bedroom homes, known as our Sycamore style to choose from.





Living Room/Dining Room: Ample power points, a tv point, ultrafast fibre-optic broadband.

Kitchen: Selection of contemporary kitchen units, worktops, and integrated appliances such as washing machine, fridge and freezer. Along with stainless steel sinks, a range of oven and hob units and chimney hoods.

Bedrooms: Two or three double bedrooms, with space for a range of furniture configurations.

Bathroom and WC: Contemporary white porcelain sanitaryware and suites, with a choice of flooring and wall tiling options.

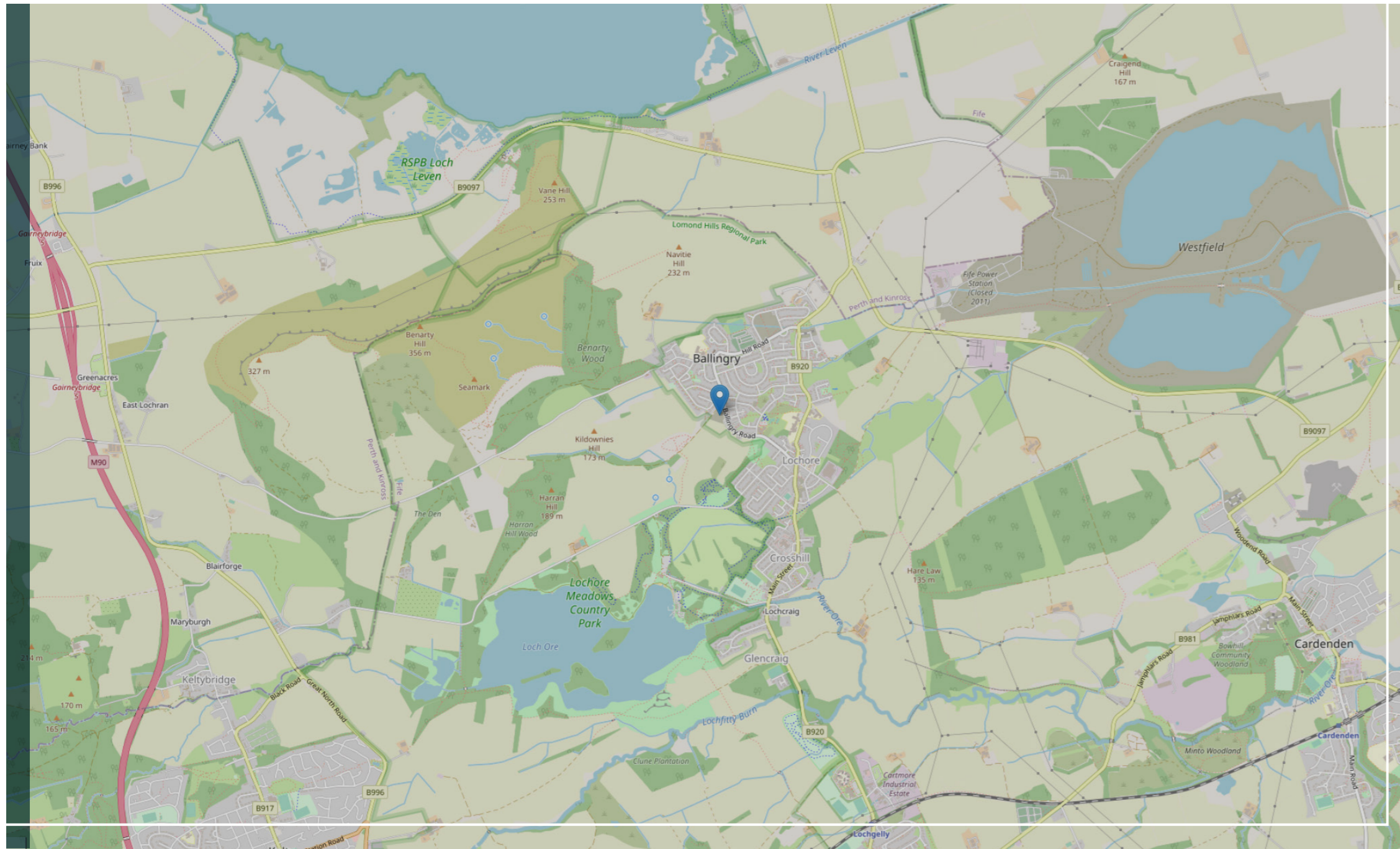
Floorings Throughout: A range of fitted carpets, timber, and tiled flooring are available throughout each home to make it personal and unique.

Finishings: There is a range of finishing options to choose from.

Energy Efficiency: Every home is designed to new air-tightness and thermal efficiency standards.

The successful purchasers will be able to select their own choice of kitchens, bathroom tiles and carpets, call to book your appointment to discuss your new home now!





Set in a picturesque semi-rural location, overlooking Lochore Meadows country park, with natural views across the Fife countryside with landscaping designed to emphasise the local nature and beauty of the area.

The development will retain a natural wilding green corridor, as well as landscaped green open spaces, creating a bright and open new living space. In addition, every house will have its own private garden and private parking.

ELEVATIONS



Sycamore



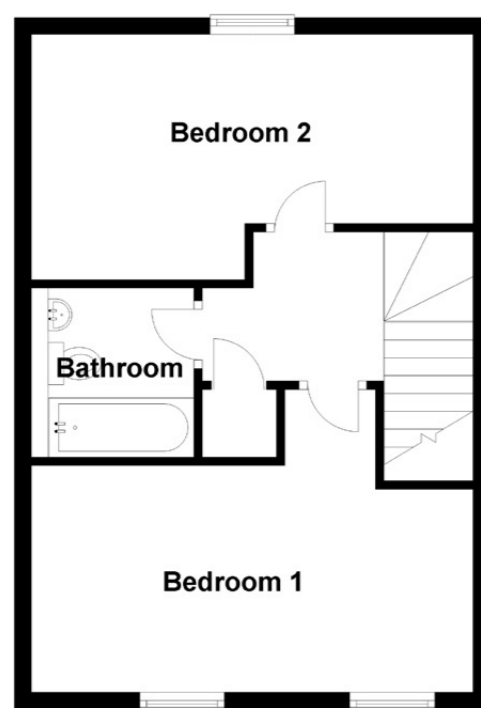
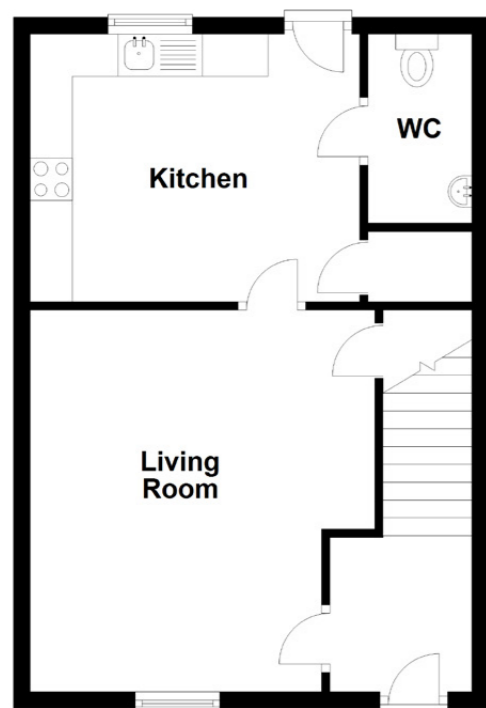
Oak



“

... Whitewood Meadows is sympathetically designed to create a delightful village community atmosphere ...

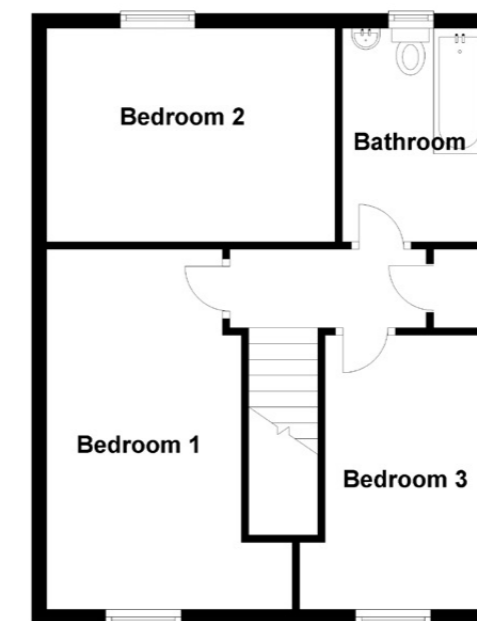
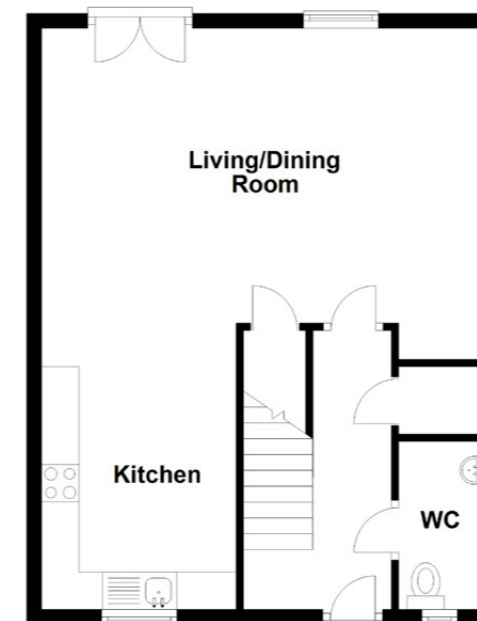
”



Sycamore

**Approximate Dimensions
(Taken from the widest point)**

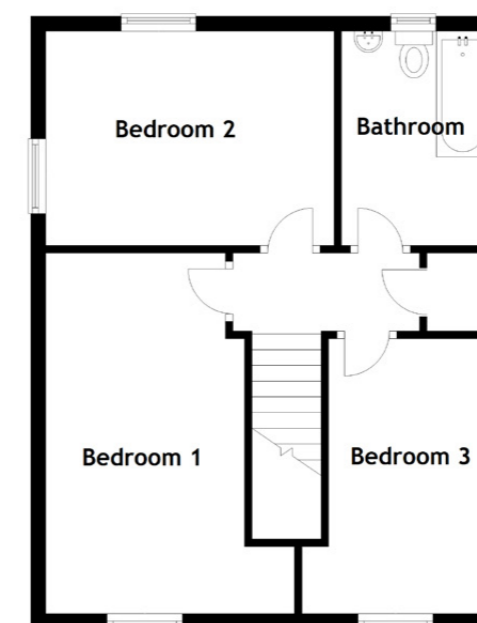
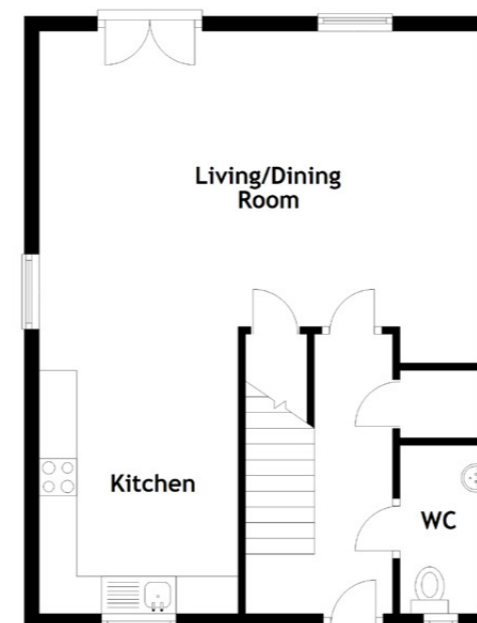
Living Room	4.52m (14'10") x 4.08m (13'5")
Kitchen	3.98m (13'1") x 3.17m (10'5")
WC	2.24m (7'4") x 1.15m (3'9")
Bedroom 1	5.26m (17'3") x 2.68m (8'10")
Bedroom 2	5.26m (17'3") x 2.90m (9'6")
Bathroom	2.00m (6'7") x 1.93m (6'4")



Oak (Mid)

**Approximate Dimensions
(Taken from the widest point)**

Living/Dining Room	5.88m (19'4") x 4.43m (14'6")
Kitchen	3.25m (10'8") x 2.61m (8'7")
WC	2.25m (7'5") x 1.10m (3'7")
Bathroom	2.86m (9'5") x 2.02m (6'8")
Bedroom 1	4.82m (15'10") x 2.63m (8'8")
Bedroom 2	3.86m (12'8") x 2.86m (9'5")
Bedroom 3	3.67m (12'1") x 2.50m (8'2")



Oak (End)

**Approximate Dimensions
(Taken from the widest point)**

Living/Dining Room	5.93m (19'5") x 4.43m (14'6")
Kitchen	3.25m (10'8") x 2.66m (8'9")
WC	2.25m (7'5") x 1.10m (3'7")
Bedroom 1	4.82m (15'10") x 2.69m (8'10")
Bedroom 2	3.86m (12'8") x 2.86m (9'5")
Bedroom 3	3.67m (12'1") x 2.50m (8'2")
Bathroom	2.86m (9'5") x 2.02m (6'8")

LOCATION

BALLINGRY

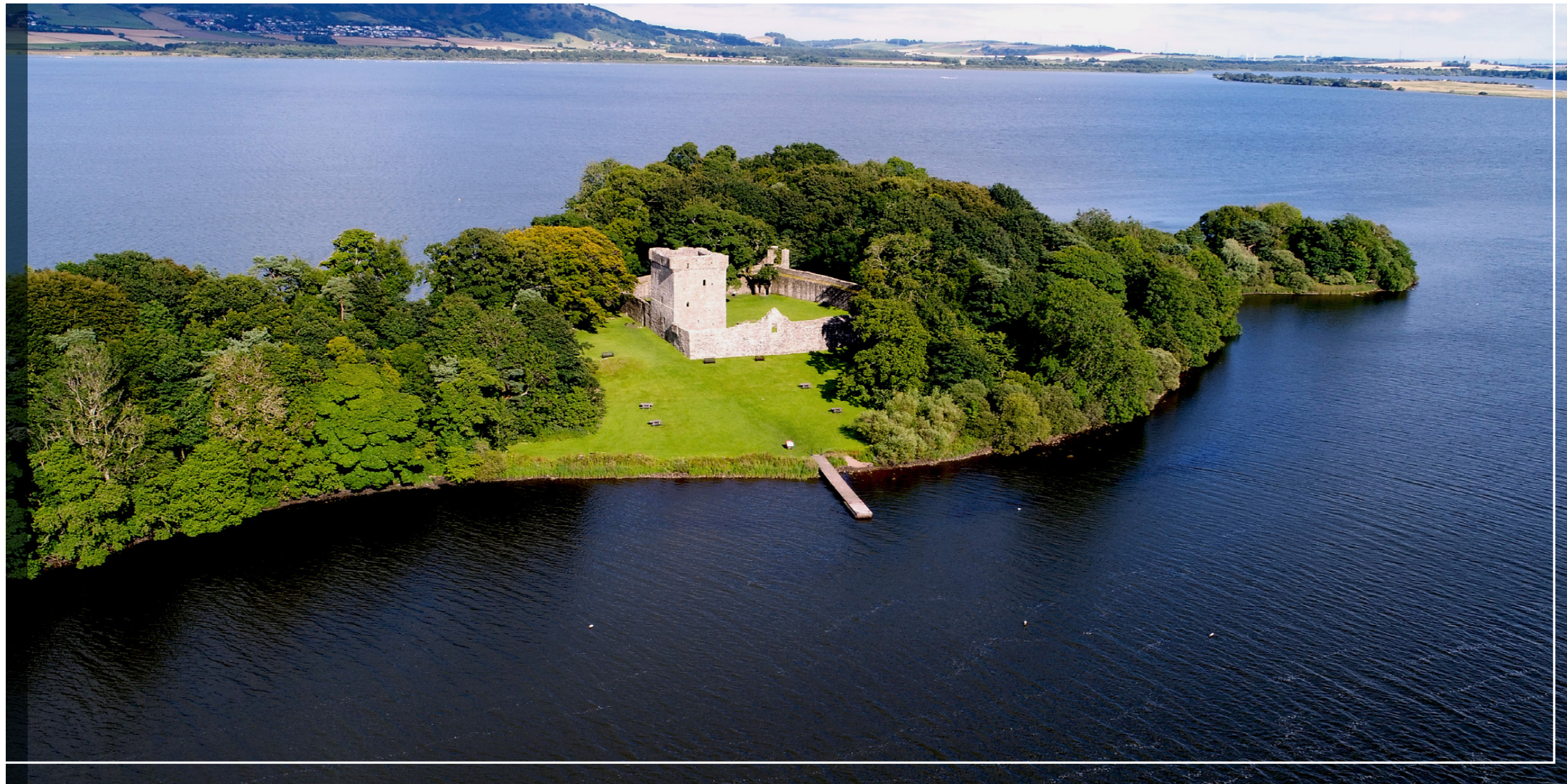
Set in a **picturesque**, semi-rural location, overlooking Lochore Meadows Country Park, with natural views across the **Fife** countryside.

Ballingry is a popular small village which has a host of local amenities including, local shops, banks and a primary school. Secondary schooling is at nearby Lochgelly.

Lochgelly lies a few miles to the North of the Forth Road Bridge, a short drive from the motorway network. Lochgelly railway station provides quick and easy commuting access with direct lines to Edinburgh. Within this area, there is a wide choice of local amenities including local schooling at both primary and secondary levels. There is local shopping for everyday requirements along with banking and postal services. But for a more extensive shopping trip, Dunfermline and Kirkcaldy are nearby.

For those looking for more leisurely pursuits, Lochore Meadows Country Park and Cluny Clays are both close and offer a full selection of outdoor activities including horse riding, golf with a driving range, shooting, fishing and a variety of water sports including windsurfing. Dunfermline is home to the Fife Leisure Park offering facilities such as a multi-screen cinema, bowling alley, gym, garden centre, bingo hall and numerous restaurants.







McEwan Fraser Legal
Solicitors & Estate Agents

Tel. 01592 800 695
www.mcewanfraserlegal.co.uk
info@mcewanfraserlegal.co.uk

**IVANHOE
HOMES**

Part
Exchange
Available

Disclaimer: The copyright for all photographs, floorplans, graphics, written copy and images belongs to McEwan Fraser Legal and use by others or transfer to third parties is forbidden without our express consent in writing. Prospective purchasers are advised to have their interest noted through their solicitor as soon as possible in order that they may be informed in the event of an early closing date being set for the receipt of offers. These particulars do not form part of any offer and all statements and photographs contained herein are for illustrative purposes and are not guaranteed or warranted. Buyers must satisfy themselves for the accuracy and authenticity of the brochure and should always visit the property to satisfy themselves of the property's suitability and obtain in writing via their solicitor what's included with the property including any land. The dimensions provided may include, or exclude, recesses intrusions and fitted furniture. Any measurements provided are for guide purposes only and have been taken by electronic device at the widest point. Any reference to alterations to, or use of, any part of the property does not mean that any necessary planning, building regulations or other consent has been obtained. A buyer must find out by inspection or in other ways that all information is correct. None of the appliances/services stated or shown in this brochure have been tested by ourselves and none are warranted by our seller or MFL.



Text and description
JAYNE SMITH
Surveyor



Layout graphics and design
ALLY CLARK
Designer