



**McEwan Fraser Legal**

Solicitors & Estate Agents

01382 721 212

4 Brighead View

INVERBERVIE, MONTROSE, DD10 0PB



The Location

INVERBERVIE, MONTROSE, DD10 0PB

Inverbervie, often more simply known as Bervie, lies on a raised beach behind Bervie Bay, just to the south of where the River Bervie flows into the North Sea. It was already well established as a fishing settlement in 1341 when King David II and Queen Johanna were forced by bad weather to land just north of here on their way back to Scotland from exile in France.

The village treated their royal guests so well that David II granted it the status of a Royal Burgh later that year. Inverbervie played no great role in Scotland's turbulent history over the next few centuries, though it is interesting to note that over this period a grand total of seven mansions or castles were built within three miles of the village.

One of these, Hallgreen Castle, stands on a bluff overlooking the sea towards the southern end of the Inverbervie, now rather beleaguered by a more recent housing development. Now a private home, it adds greatly to the interest of this part of Inverbervie.

Fishing continued from the shelter of the mouth of the river for almost 500 years, and harbour improvements were made by Thomas Telford in 1819. However, by 1830, a shingle spit had grown across the mouth of the river, making access difficult for boats. Fishermen based in Inverbervie moved the mile or

so down the coast to the better harbour at Gourdon. By then Inverbervie had fortunately diversified. From 1787 it was the location of Scotland's first water-powered flax mill: and textiles, thread and sailcloth helped the village prosper.

Since it ceased to have an active harbour, Inverbervie has rather turned its back on the sea. Bervie Bay is a curving pebble beach, built into steeply descending terraces by the vigorous action of the surf. Behind the shore is a fairly recent residential area, plus Inverbervie's leisure centre and the town camping and caravanning site.

The main focus of the village is King Street, home to most of the shops and to the Bervie Parish Church. Towards its northern end is the Market Square, where you find a Mercat Cross dating back to 1737.

As the A92 through Inverbervie leaves the village it crosses the river over the impressively curving, seven arched Jubilee Bridge built in 1935. This replaced the Old Bervie Bridge, a 103ft single span built in 1799. The old bridge remains in place, still used by pedestrians, and converging dramatically at its north end with its replacement.

Close to the south end of the Jubilee Bridge is the Hercules Linton Memorial. Hercules Linton, the designer of the Cutty Sark, was born in Inverbervie in 1836 in a house overlooking the Mercat Cross. The memorial is in the form of a full-size replica of the figurehead of the ship, the scantily clad witch Nannie from Robert Burns' poem Tam o' Shanter.

Lying approximately 11 miles south of Stonehaven and within easy commuting distance of both Aberdeen and Montrose, the town is well served by shops, a leisure centre and medical centre. Primary schooling is available locally at Bervie Primary School, while secondary education is available at Mackie Academy in Stonehaven or at Mearns Academy in Laurencekirk.

Brighead View

INVERBERVIE, DD10 0PB

Particularly appealing detached villa situated within the small town of Inverberrie and would make an ideal family home with plenty of living space and four bedrooms.

The property is accessed via a Porch and into a bright entrance hall. The elegant proportions of the lounge afford plenty of room for the dining table with double doors through to the spacious dining kitchen. Dual aspect to gardens and semi-glazed French doors to the dining room ensure plenty of natural daylight.

The dining kitchen is modern and fresh, but make no mistake, this is a spacious and elegant area with quality flooring blending into the modern fitted kitchen, complete with an array of appliances and gloss units matched with contrasting work surfaces. From here, patio doors reveal the garden. On the ground floor is bedroom four, there is also a well-appointed cloakroom and excellent storage.

The carpeted staircase rises to the first floor. The cavernous family bathroom includes a bath, a walk-in shower cubicle, toilet and vanity basin. The master bedroom enjoys "his and hers" wardrobes and an en-suite shower room with 4 piece suite. Two further double bedrooms each have built-in wardrobes.

Externally, the drive can accommodate several vehicles and there is a converted garage that offers storage to the front section and a hobby room or home office to the rear, ideal if you can now work from home. For space, style, and working from home, this home is hard to beat.





Details

FLOOR PLAN, DIMENSINS & MAP

Approximate Dimensions (Taken from the widest point)

Lounge	8.10m (26'7") x 3.80m (12'6")
Kitchen	5.70m (18'8") x 3.40m (11'2")
Bedroom 1	4.10m (13'5") x 3.80m (12'6")
En-suite	2.20m (7'3") x 2.10m (6'10")
Bedroom 2	3.80m (12'6") x 3.20m (10'6")
Bedroom 3	3.80m (12'6") x 3.00m (9'10")
Bedroom 4	3.20m (10'6") x 2.50m (8'2")
Bathroom	2.70m (8'10") x 2.60m (8'6")
WC	2.50m (8'2") x 1.20m (3'11")

Gross internal floor area (m²): 142m² | EPC Rating: C

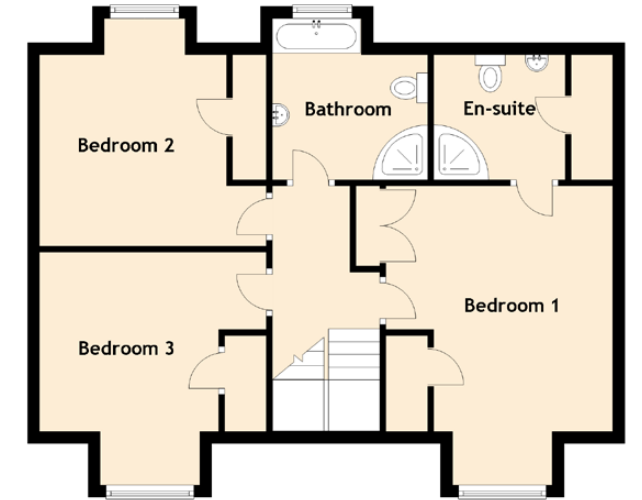
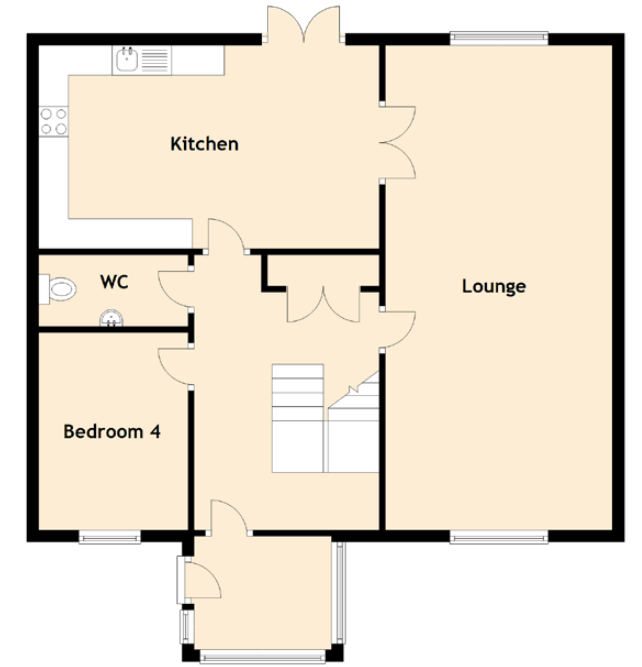
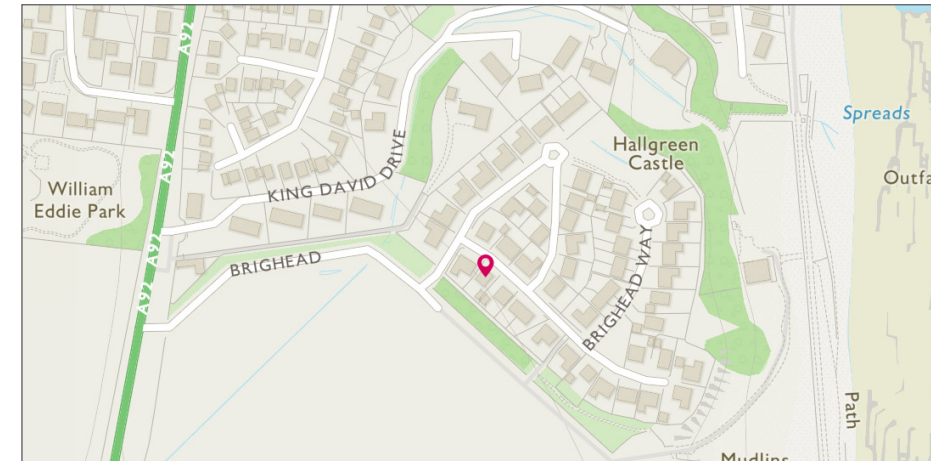


Image credit: <https://www.ordnancesurvey.co.uk/emaps/>




McEwan Fraser Legal
Solicitors & Estate Agents

Tel. 01382 721 212
www.mcewanfraserlegal.co.uk
info@mcewanfraserlegal.co.uk

**Part
Exchange
Available**

Disclaimer: The copyright for all photographs, floorplans, graphics, written copy and images belongs to McEwan Fraser Legal and use by others or transfer to third parties is forbidden without our express consent in writing. Prospective purchasers are advised to have their interest noted through their solicitor as soon as possible in order that they may be informed in the event of an early closing date being set for the receipt of offers. These particulars do not form part of any offer and all statements and photographs contained herein are for illustrative purposes and are not guaranteed or warranted. Buyers must satisfy themselves for the accuracy and authenticity of the brochure and should always visit the property to satisfy themselves of the property's suitability and obtain in writing via their solicitor what's included with the property including any land. The dimensions provided may include, or exclude, recesses intrusions and fitted furniture. Any measurements provided are for guide purposes only and have been taken by electronic device at the widest point. Any reference to alterations to, or use of, any part of the property does not mean that any necessary planning, building regulations or other consent has been obtained. A buyer must find out by inspection or in other ways that all information is correct. None of the appliances/services stated or shown in this brochure have been tested by ourselves and none are warranted by our seller or MFL.



Text and description
JAYNE SMITH
Surveyor



Professional photography
GRANT LAWRENCE
Photographer



Layout graphics and design
ALLY CLARK
Designer