

22 Viewforth Place

PITTENWEEM, FIFE, KY10 2PZ



SITUATED IN A PICTURESQUE COASTAL VILLAGE, THIS HOME IS SURROUNDED BY EXCELLENT AMENITIES



01333 400 400



www.mcewanfraserlegal.co.uk



info@mcewanfraserlegal.co.uk





McEwan Fraser Legal is delighted to offer for sale this impressive home in Pittenweem. This stunning property exudes elegance and sophistication, offering an abundance of bright, spacious interiors complemented by tasteful décor and high-quality finishes. Nestled in a prestigious and highly sought-after location, this home boasts a handsome façade, manicured gardens, and a secure gated entrance, ensuring privacy and style at every turn.

The ground floor welcomes you with a charming vestibule and a convenient cloakroom with a toilet. The elegant lounge, bathed in natural light, features a beautiful bay window and a statement fireplace, creating a warm and inviting atmosphere.

For quieter moments, the sitting room provides a tranquil retreat, while the heart of the home is undoubtedly the spacious kitchen/family/dining room. Modern and sleek, the kitchen opens seamlessly through French doors to the lush gardens, making it perfect for entertaining. A practical utility room completes this level.







Sitting Room





Upstairs, the property continues to impress with four beautifully appointed bedrooms. The principal bedroom, showcasing a bay window, offers a luxurious en-suite shower room. The family bathroom is equally impressive, featuring both a relaxing bath and a walk-in shower, ensuring convenience for a busy household.





Bedroom 2

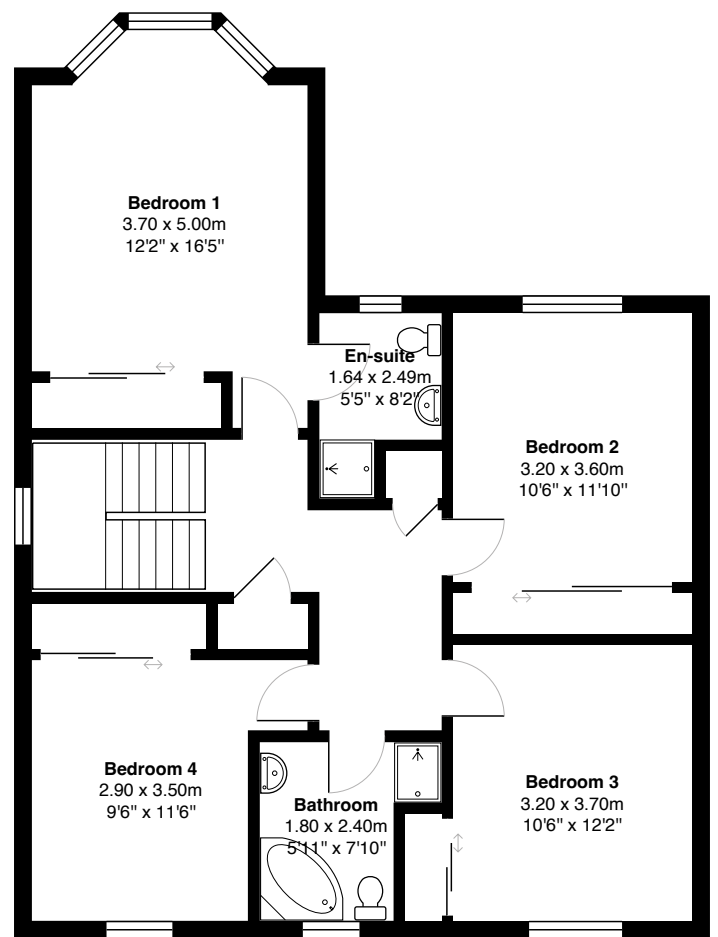
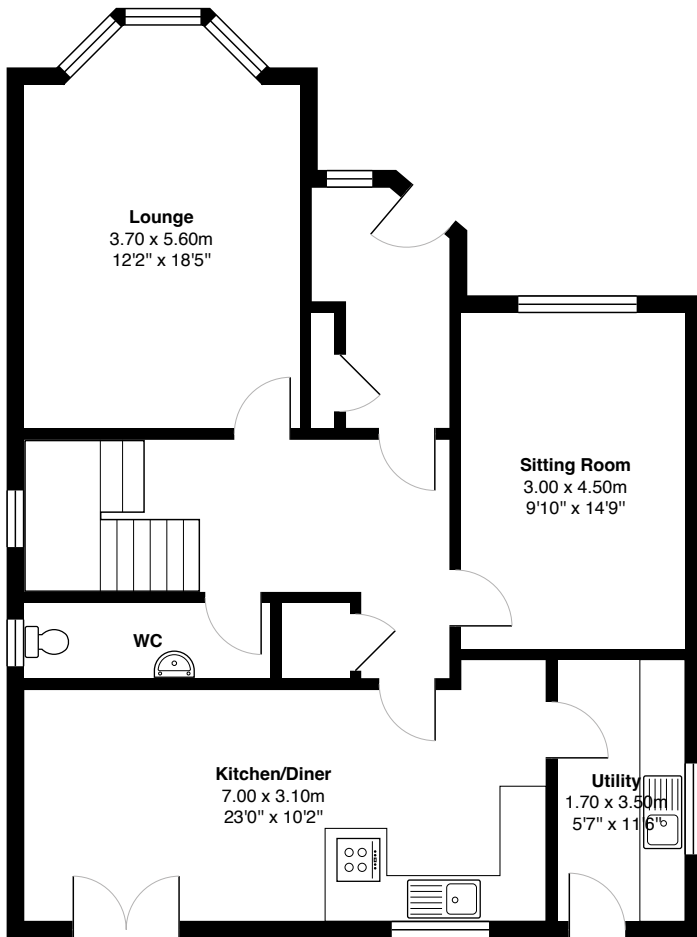




Bedrooms 3&4







Gross internal floor area (m²): 167m²

EPC Rating: C

Floor Plan



Externally, the property boasts a large double garage and a mono-blocked driveway, offering ample parking. The gardens are designed for easy maintenance, with mature shrub borders and a manicured lawn adding to the charm of the outdoor space.

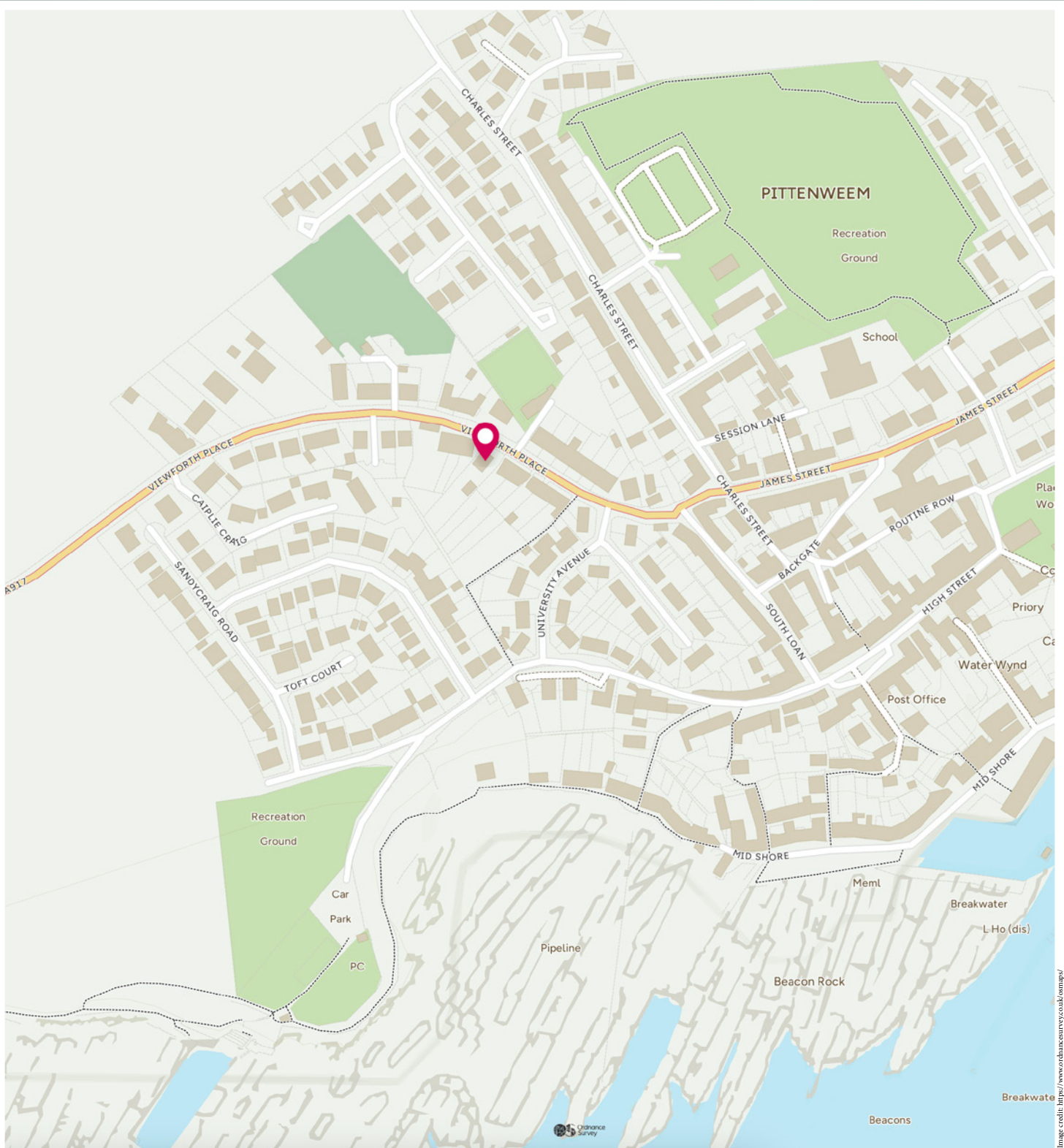




Nestled along the stunning East Neuk of Fife, Pittenweem is a picturesque coastal village steeped in history and brimming with character. Renowned for its vibrant harbour, colourful cottages, and bustling community, Pittenweem offers a lifestyle that beautifully blends tranquillity with a lively local culture. The village is famed for its long-standing fishing heritage, evident in the daily activity at the harbour, where boats return with the freshest seafood, a treat for locals and visitors alike. Pittenweem's charm is further enhanced by its narrow, winding streets and traditional whitewashed buildings, many of which date back centuries, creating a postcard-perfect setting.

Pittenweem is also a cultural hub, celebrated for its annual arts festival, which attracts artists and visitors from far and wide. Year-round, you'll find independent galleries, artisan shops, and cosy cafés offering everything from local delicacies to inspiring creative works. For families, the village provides a safe and welcoming environment, with excellent schooling options and a strong sense of community. Outdoor enthusiasts can explore the Fife Coastal Path, which runs through Pittenweem, offering breathtaking views of the North Sea and access to neighbouring villages such as Anstruther and St Monans.

The Location



McEwan Fraser Legal

Solicitors & Estate Agents

Tel. 01333 400 400

www.mcewanfraserlegal.co.uk

info@mcewanfraserlegal.co.uk

Part
Exchange
Available



THE SUNDAY TIMES
THE SUNDAY TIMES



Text and description
JAYNE SMITH
Corporate Account Manager



Professional photography
GRANT LAWRENCE
Photographer



Layout graphics and design
ALAN SUTHERLAND
Designer

Disclaimer: The copyright for all photographs, floorplans, graphics, written copy and images belongs to McEwan Fraser Legal and use by others or transfer to third parties is forbidden without our express consent in writing. Prospective purchasers are advised to have their interest noted through their solicitor as soon as possible in order that they may be informed in the event of an early closing date being set for the receipt of offers. These particulars do not form part of any offer and all statements and photographs contained herein are for illustrative purposes and are not guaranteed or warranted. Buyers must satisfy themselves for the accuracy and authenticity of the brochure and should always visit the property to satisfy themselves of the property's suitability and obtain in writing via their solicitor what's included with the property including any land. The dimensions provided may include, or exclude, recesses intrusions and fitted furniture. Any measurements provided are for guide purposes only and have been taken by electronic device at the widest point. Any reference to alterations to, or use of, any part of the property does not mean that any necessary planning, building regulations or other consent has been obtained. A buyer must find out by inspection or in other ways that all information is correct. None of the appliances/services stated or shown in this brochure have been tested by ourselves and none are warranted by our seller or MFL.