



*A lovely detached five-bedroom home,  
with water views on Stronsay, Orkney*



01463 211 116



[www.mcewanfraserlegal.co.uk](http://www.mcewanfraserlegal.co.uk)



[info@mcewanfraserlegal.co.uk](mailto:info@mcewanfraserlegal.co.uk)

Nestled in the picturesque landscape of Stronsay, which is known as Orkneys Island of Bays, Fagerheim offers stunning water views and is a perfect blend of comfort and style. This detached property boasts five spacious bedrooms, making it an ideal home for families or those who love to entertain.

# THE KITCHEN/DINER



Upon entering, you are greeted by a well-appointed kitchen with a dining area, perfect for family meals and gatherings. Off the kitchen is a separate utility room.

# THE LOUNGE



The cosy lounge, with its charming wood burner fireplace, provides a warm and inviting space to relax. The ground floor also features two bedrooms, and a convenient shower room.



# BEDROOM 4

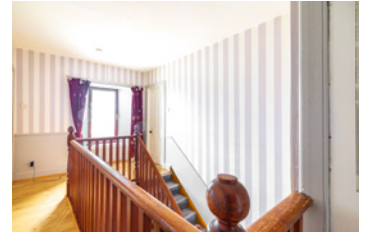


# BEDROOM 5



# THE SHOWER ROOM



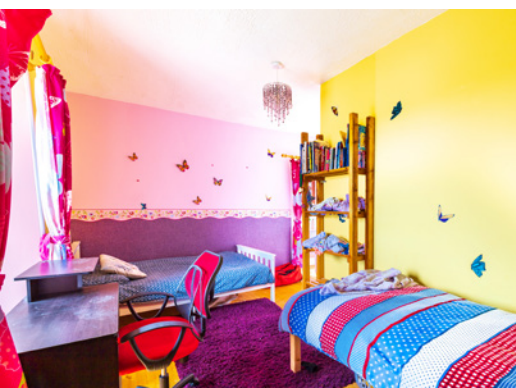


Upstairs, you will find three additional double bedrooms, all designed with comfort in mind, along with a modern family bathroom.

# THE BATHROOM



# BEDROOM 1





# BEDROOM 2



# BEDROOM 3



The exterior of Fagerheim is equally impressive. A private driveway and detached garage offer ample parking and storage. The beautiful gardens are thoughtfully divided into various areas to suit all your outdoor needs. Whether you desire a lush lawn for children's play, a peaceful spot to enjoy a coffee or glass of wine, or a dedicated space for growing fruits and vegetables, this garden caters to all.

Fagerheim is more than just a home; it's a serene retreat where you can enjoy the tranquillity of coastal living, with all the amenities you need for a comfortable lifestyle. Don't miss the opportunity to make this exceptional property yours.

## EXTERNALS & VIEW





# FLOOR PLAN, DIMENSIONS & MAP

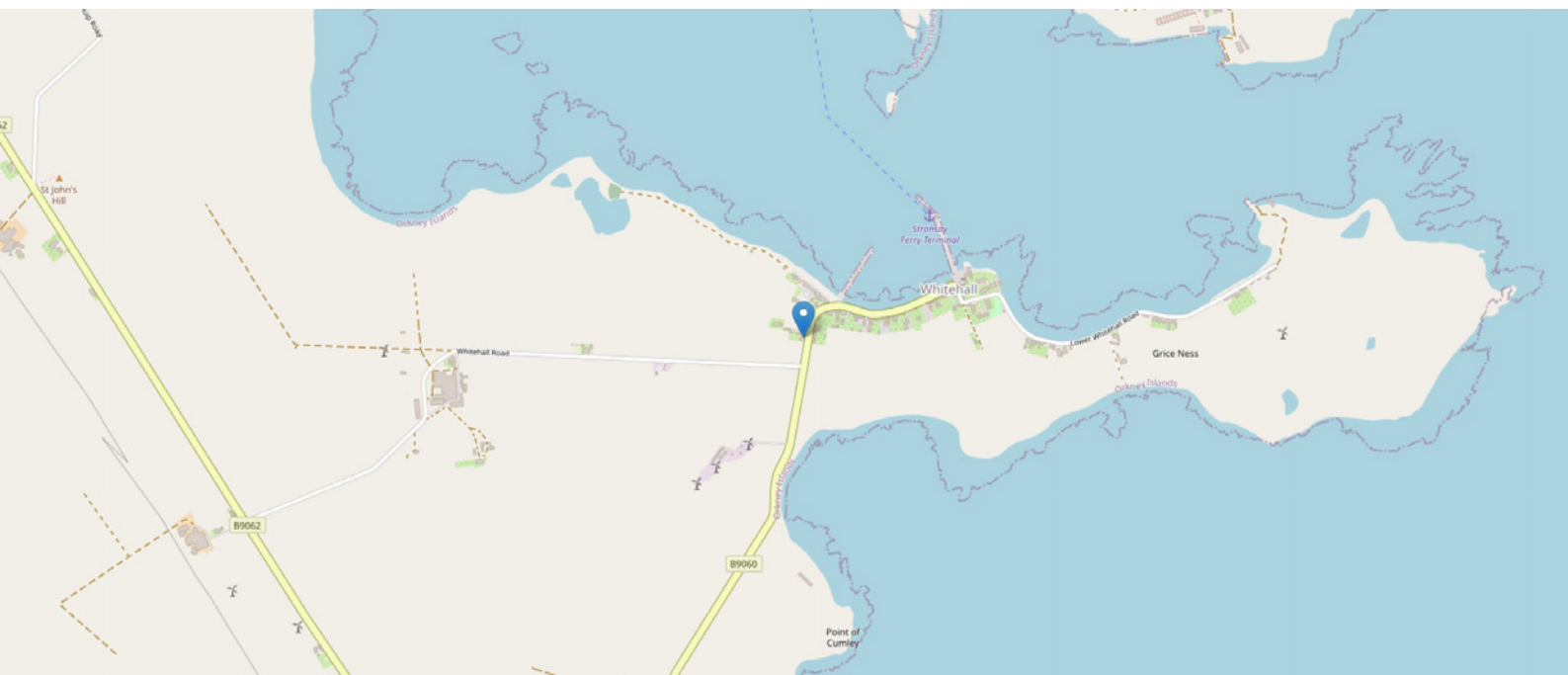


Approximate Dimensions (Taken from the widest point)

Kitchen/Diner	6.37m (20'11") x 4.34m (14'3")
Utility	2.38m (7'10") x 1.77m (5'10")
Living Room	5.13m (16'10") x 3.74m (12'3")
Family Room	3.74m (12'3") x 2.81m (9'2")
WC	1.79m (5'11") x 1.19m (3'11")
Bathroom	3.10m (10'2") x 1.67m (5'6")

Bedroom 1	6.24m (20'6") x 4.26m (14')
En-suite	3.04m (10') x 2.48m (8'2")
Bedroom 2	3.79m (12'5") x 3.52m (11'6")
Bedroom 3	3.81m (12'6") x 3.09m (10'1")
Bedroom 4	3.60m (11'10") x 3.44m (11'4")
Garage	

Gross internal floor area (m<sup>2</sup>): 184m<sup>2</sup> | EPC Rating: F



# THE LOCATION

Stronsay, a small bucolic island known for its distinctive shape, is a hidden gem in the Orkney archipelago. Stretching only about 7 miles long, Stronsay is affectionately referred to as Orkney's 'island of bays'. This enchanting island is renowned for its beautiful beaches, rugged cliffs, and green, fertile fields that roll gently towards the coast.





The Stronsay coastline is a treasure trove of natural wonders, offering a diverse landscape of cliffs, caves, and geos. Among its most spectacular attractions is the Vat of Kirbister, a magnificent rock arch over a gloop, accessible via an excellent coastal walking route. This area is particularly stunning in the summer, with wildflowers adorning the cliff tops and seabirds gracefully swooping beneath the arch, creating a picturesque and serene environment.

Stronsay is perfect for nature lovers and those seeking tranquillity away from the bustle of city life. Its unspoiled natural beauty, coupled with a rich array of wildlife and vibrant local culture, makes it an idyllic retreat. Whether you're exploring the scenic walking trails, relaxing on the sandy shores, or simply soaking in the panoramic views, Stronsay offers a peaceful and invigorating escape.

Experience the charm and beauty of Stronsay, and discover why it's one of Orkney's most captivating islands.



  
**McEwan Fraser Legal**

Solicitors & Estate Agents

Tel. 01463 211 116

[www.mcewanfraserlegal.co.uk](http://www.mcewanfraserlegal.co.uk)

[info@mcewanfraserlegal.co.uk](mailto:info@mcewanfraserlegal.co.uk)

**Part  
Exchange  
Available**



Text and description  
**CRAIG PETERS**  
 Surveyor



Layout graphics and design  
**ALLY CLARK**  
 Designer

**Disclaimer:** The copyright for all photographs, floorplans, graphics, written copy and images belongs to McEwan Fraser Legal and use by others or transfer to third parties is forbidden without our express consent in writing. Prospective purchasers are advised to have their interest noted through their solicitor as soon as possible in order that they may be informed in the event of an early closing date being set for the receipt of offers. These particulars do not form part of any offer and all statements and photographs contained herein are for illustrative purposes and are not guaranteed or warranted. Buyers must satisfy themselves for the accuracy and authenticity of the brochure and should always visit the property to satisfy themselves of the property's suitability and obtain in writing via their solicitor what's included with the property including any land. The dimensions provided may include, or exclude, recesses intrusions and fitted furniture. Any measurements provided are for guide purposes only and have been taken by electronic device at the widest point. Any reference to alterations to, or use of, any part of the property does not mean that any necessary planning, building regulations or other consent has been obtained. A buyer must find out by inspection or in other ways that all information is correct. None of the appliances/services stated or shown in this brochure have been tested by ourselves and none are warranted by our seller or MFL.