

91 Homemount House

LARGS, NORTH AYRSHIRE, KA30 9LST



A tastefully decorated one-bedroom retirement apartment located on the top floor, accessed via a lift, boasting stunning views



01292 430 555



www.mcewanfraserlegal.co.uk



info@mcewanfraserlegal.co.uk



We are delighted to bring to the market this bright and spacious one-bedroom retirement apartment located on the top floor, accessed via a lift, boasting a beautiful outlook.

The development was built by McCarthy & Stone in 1984 and comprises 91 self-contained apartments on four floors, served by two lifts. It is purpose-built for retirement and each apartment has an entryphone with communication to the Resident Development Manager by means of an intercom. The development is for over-sixties or in the case of a couple, one must be over sixty and the other over fifty-five.

THE LOUNGE



A welcoming hallway allows access to all apartments. The formal lounge is flooded with natural light and hosts a range of furniture configurations whilst also boasting stunning views. Many an evening will be spent in this zone enjoying the pleasant outlook.

THE KITCHEN



The fitted kitchen comes complete with a range of floor and wall-mounted units with a contemporary work surface, creating a fashionable and efficient workspace. It is further complemented with a host of integrated appliances and plumbed space for free-standing appliances.



The crisp and contemporary styling continues into the well-appointed bedroom. This room is bright and airy with space for additional free-standing furniture if required. The shower room completes the impressive accommodation internally.

THE BATHROOM



BEDROOM 1



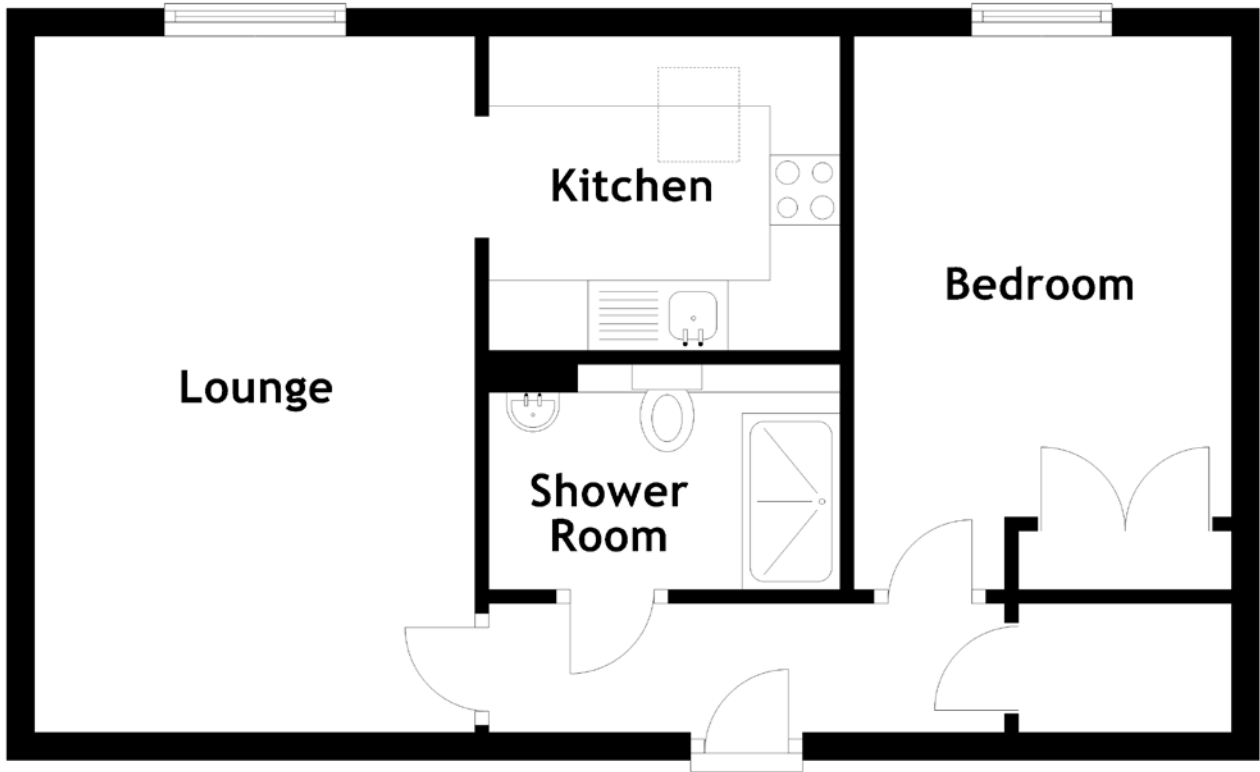
The complex benefits from a resident's lounge and kitchen where regular social events take place and is a fantastic opportunity to socialise with other residents, a laundry room and communal gardens which provide a perfect setting during the summer months. Finally, the complex is completed with residents parking.

EXTERNALS & VIEWS





FLOOR PLAN, DIMENSIONS & MAP



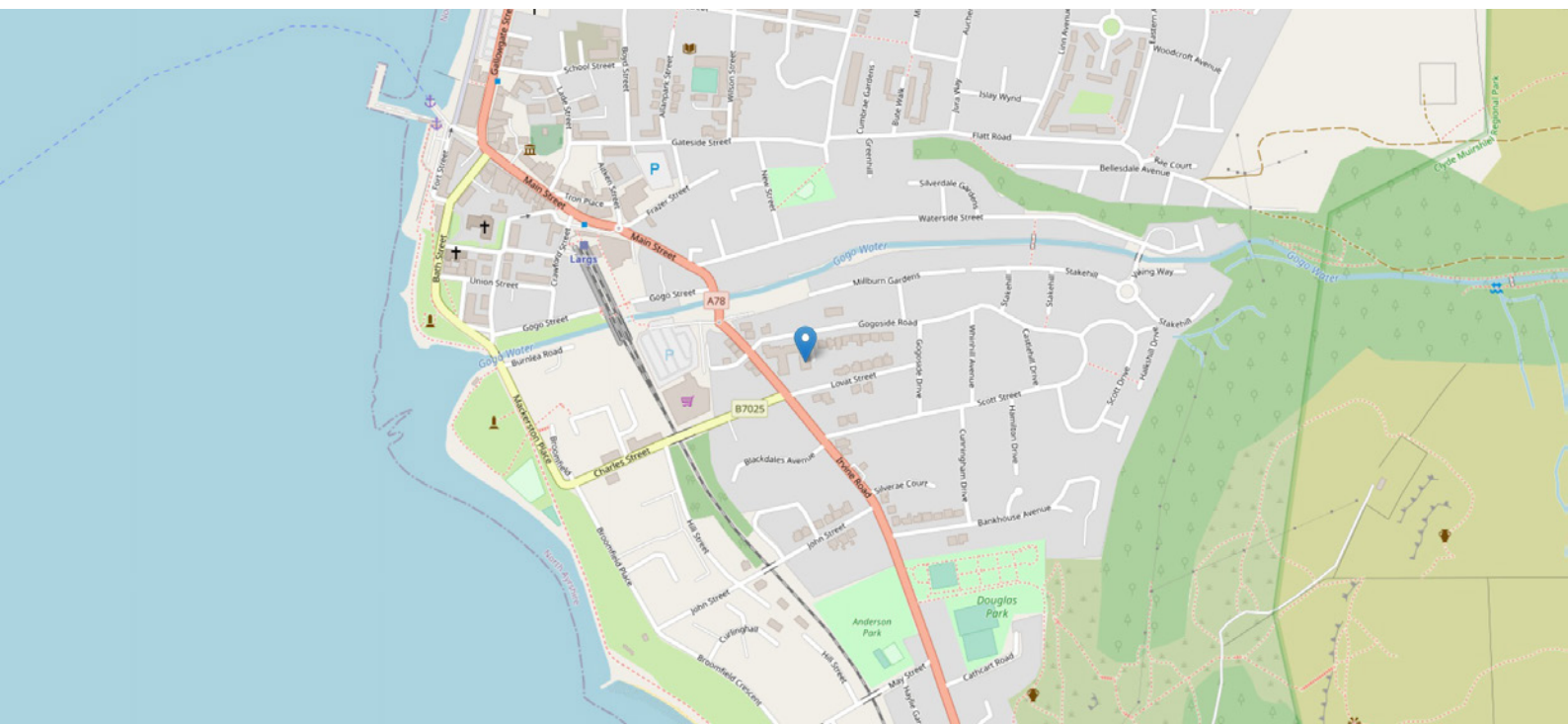
Approximate Dimensions (Taken from the widest point)

Lounge	5.60m (18'4") x 3.50m (11'6")
Kitchen	3.90m (12'10") x 3.50m (11'6")
Bedroom 1	3.50m (11'6") x 3.00m (9'10")
Bedroom 2	3.00m (9'10") x 2.90m (9'6")
Bathroom	2.00m (6'7") x 1.90m (6'3")
Summer House	3.50m (11'6") x 3.00m (9'10")

Gross internal floor area (m²): 41m²

EPC Rating: D

Extras: Carpets and floor coverings, light fixtures and fittings, curtains and blinds.



THE LOCATION

Homemount House is on the corner of Gogoside Road and Irvine Road in close proximity to shops, buses and trains. Largs is a delightful town with a backdrop of glens and moors and facing the sheltered water of the Firth of Clyde. Country parks for the enjoyment of all and possible to pursue almost any interest.





For many years, Largs has proved to be one of Scotland's most desirable towns in which to locate, due to its natural landscape with a magnificent coastline, taking in the breathtaking sights of Arran, Bute and Cumbrae to the west and the spectacular backdrop of the countryside to the east.

Popular with all ages, providing excellent shopping, cafes, bars and restaurants with the world-famous Nardini's, a marina, golf courses and high performing schools. Largs is in that enviable position of offering everything you could need.

With its proximity to Glasgow Airport, Prestwick Airport and Glasgow City Centre. Largs is also an ideal commute to Glasgow and, by air, nationwide.



McEwan Fraser Legal

Solicitors & Estate Agents

Tel. 01292 430 555

www.mcewanfraserlegal.co.uk

info@mcewanfraserlegal.co.uk



Text and description
DIANE KERR
Area Manager



Layout graphics and design
ALLY CLARK
Designer

Disclaimer: The copyright for all photographs, floorplans, graphics, written copy and images belongs to McEwan Fraser Legal and use by others or transfer to third parties is forbidden without our express consent in writing. Prospective purchasers are advised to have their interest noted through their solicitor as soon as possible in order that they may be informed in the event of an early closing date being set for the receipt of offers. These particulars do not form part of any offer and all statements and photographs contained herein are for illustrative purposes and are not guaranteed or warranted. Buyers must satisfy themselves for the accuracy and authenticity of the brochure and should always visit the property to satisfy themselves of the property's suitability and obtain in writing via their solicitor what's included with the property including any land. The dimensions provided may include, or exclude, recesses intrusions and fitted furniture. Any measurements provided are for guide purposes only and have been taken by electronic device at the widest point. Any reference to alterations to, or use of, any part of the property does not mean that any necessary planning, building regulations or other consent has been obtained. A buyer must find out by inspection or in other ways that all information is correct. None of the appliances/services stated or shown in this brochure have been tested by ourselves and none are warranted by our seller or MFL.