




McEwan Fraser Legal
 Solicitors & Estate Agents
 01292 430 555

Alt A Mhonaidh

CORDON, BY LAMLASH, ISLE OF ARRAN, NORTH AYRSHIRE, KA27 8NQ



Cordon, By Lamlash

ISLE OF ARRAN, NORTH AYRSHIRE, KA27 8NQ

Alt A Mhonaidh is situated in the pretty, coastal village Lamlash, on the eastern side of the popular west coast of Scotland island of Arran.

The village of Lamlash has three hotels (The Glenisle, Lamlash Bay Hotel and Altachorvie Island Retreat), two pubs (The Drift Inn and The Pierhead Tavern), a local church, newsagents, a chemist, medical centre, the only hospital on the island and a newly refurbished Co-op.

Brodick (the main town of Arran) has two larger Co-Op supermarkets and a good range of further professional services. Brodick is the port from which a regular daily sailing service by Caledonian MacBrayne leads to the mainland at Ardrossan.

Ardrossan has a mainline rail station, with trains to Glasgow that connect with the ferry times, and is approximately thirty miles from Glasgow city centre. Prestwick International Airport is sixteen miles to the south of Ardrossan, with Glasgow International Airport twenty-four miles east of Ardrossan. Arran High School and the primary school are situated within a very short walk and further primary schooling is available in Corrie, Brodick, Whiting Bay, Pirnmill, Shiskine and Kilmory. A frequent bus service runs around and across the island and, at Lochranza, there is the ferry terminus to Claonaig on Kintyre.



Cordon, By Lamlash

ISLE OF ARRAN, NORTH AYRSHIRE, KA27 8NQ

Part Exchange available. We are delighted to bring to the market Alt A Mhonaidh, a beautifully presented three bedroom cottage, split over two levels, with views that will simply take your breath away. The property has been operating as a very successful holiday home business earning over £28k a year. A particularly picturesque example of contemporary living, you can't help but be utterly bewitched by this creation of what modern living in Scotland is all about. The perfect marriage of modern splendour and quality fixtures and fittings throughout; all fall under the spell.

Stepping through the main entrance, the welcoming hallway that leads to the rest of the apartments on this level sets the tone for the rest of this beautiful property. The open plan lounge comes dining room has a wealth of modern charm and has a real 'cosy' feel to it with the feature fire and surround as its focal point and also boasts a beautiful outlook, this room is the perfect place to unwind after a hard day. The dining area is often used for hosting dinner parties, it is easy to imagine the fabulous evenings and good company the magnificent space has played host to. Bedroom three is

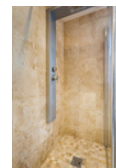
pleasantly positioned on this level but could be transformed to meet each individual purchaser's needs and requirements.

The fitted kitchen has been professionally fitted to include a quality range of floor and wall mounted units with a striking work surface, creating a fashionable and efficient work-space. It is further complemented with a host of integrates appliances, making this the ideal zone for an aspiring chef. The family bathroom completes the accommodation on this level.

Journeying to the first-floor level, the crisp and contemporary styling continues into the two bright and airy well-proportioned bedrooms, both of the bedrooms have a range of furniture configurations and space for additional free standing furniture if required. They also boast a beautiful outlook.

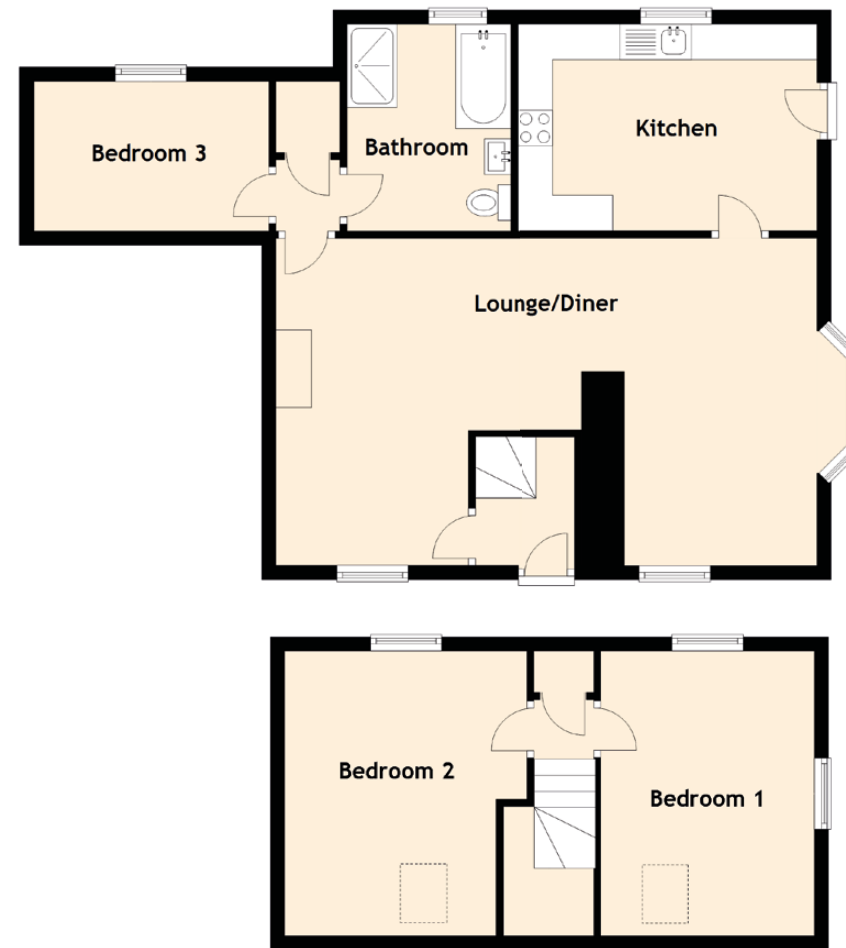
Generous grounds synonymous with the luxury inside complete this tranquil home. The garden grounds are a sheer delight, especially in the summer months. You are spoiled for choice whether you want to relax in the garden or lie on the sandy beach, which is on your doorstep.





Speciifcations & Details

FLOOR PLAN, DIMENSIONS & MAP



Approximate Dimensions (Taken from the widest point)

Lounge/Diner	7.60m (24'11") x 4.60m (15'1")
Kitchen	4.20m (13'9") x 2.90m (9'6")
Bedroom 1	4.00m (13'1") x 3.00m (9'10")
Bedroom 2	4.00m (13'1") x 3.40m (11'2")
Bedroom 3	3.30m (10'10") x 2.10m (6'11")
Bathroom	2.90m (9'6") x 2.30m (7'7")

Gross internal floor area (m²): 73m² | EPC Rating: F

Extras (Included in the sale): Carpets and floor coverings, light fixtures and fittings, curtains and blinds.

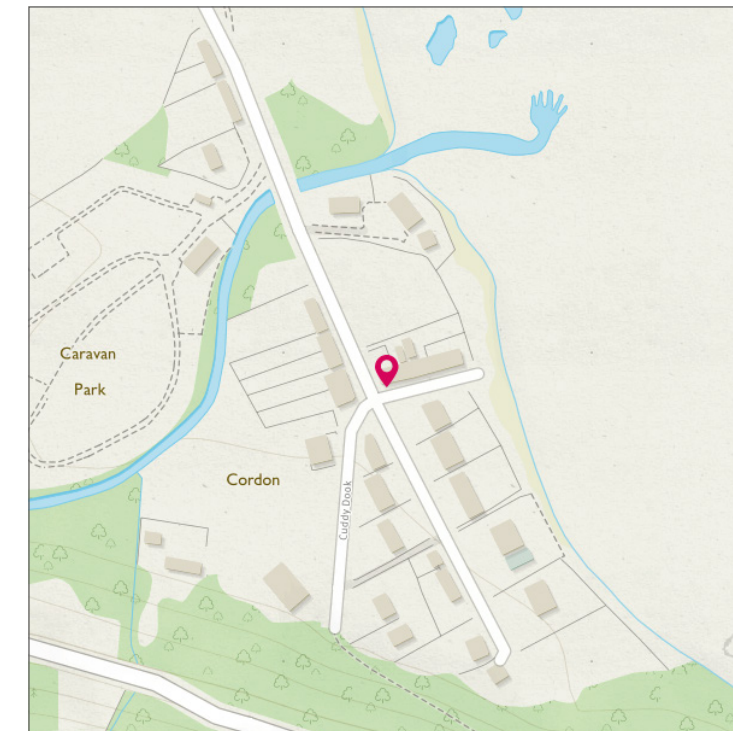


Image credit: <https://www.radiant-surveys.co.uk/template/>



McEwan Fraser Legal

Solicitors & Estate Agents

Tel. 01292 430 555
www.mcewanfraserlegal.co.uk
info@mcewanfraserlegal.co.uk

**Part
Exchange
Available**

Disclaimer : The copyright for all photographs, floorplans, graphics, written copy and images belongs to McEwan Fraser Legal and use by others or transfer to third parties is forbidden without our express consent in writing. Prospective purchasers are advised to have their interest noted through their solicitor as soon as possible in order that they may be informed in the event of an early closing date being set for the receipt of offers. These particulars do not form part of any offer and all statements and photographs contained herein are for illustrative purposes and are not guaranteed or warranted. Buyers must satisfy themselves for the accuracy and authenticity of the brochure and should always visit the property to satisfy themselves of the property's suitability and obtain in writing via their solicitor what's included with the property including any land. The dimensions provided may include, or exclude, recesses intrusions and fitted furniture. Any measurements provided are for guide purposes only and have been taken by electronic device at the widest point. Any reference to alterations to, or use of, any part of the property does not mean that any necessary planning, building regulations or other consent has been obtained. A buyer must find out by inspection or in other ways that all information is correct. None of the appliances/services stated or shown in this brochure have been tested by ourselves and none are warranted by our seller or MFL.



Text and description
DIANE KERR
 Surveyor



Professional photography
ANDY SURRIDGE
 Photographer



Layout graphics and design
ALLY CLARK
 Designer