

21 Grosvenor Park

MUNDOLE, FORRES, IV36 2UL



*THIS STATIC PARK HOME "DELTA BY EVESHAM" WAS
NEW IN 2017 AND IS IN WALK-IN CONDITION*



0131 524 9797



www.mcewanfraserlegal.co.uk



info@mcewanfraserlegal.co.uk





This static Delta by Evesham was new in 2017 and is in walk-in condition. It features a double opening patio door with a full glass front which gives you easy access to your front decking and full frontal panoramic views. This static holiday home is genius in its design with optimised space and use of lighting to create a luxury feel that is guaranteed to make you feel special. Fully equipped with many integrated appliances the Delta by Evesham leaves you wanting for nothing. The bathroom has a full-size bath with a shower. The spacious main bedroom also features its very own shower room and a walk-in wardrobe.





You are buying the property as presented including all fixtures and fittings. The open plan living area is extremely light and airy due to the triple aspect windows and full-width patio doors, lined by rustic whitewash heavy and lustrous fabrics in neutral tones warm the space whilst floor to ceiling windows provide an abundance of light. Textures are fabulously contrasting; rough, distressed woods compliment soft grey furnishings. The fully equipped, country style kitchen including Fridge-Freezer, microwave, dishwasher (plus additional fridge, is made complete with a feature island breakfast bar with wine rack. There is a large comfortable living space and dining area alongside the kitchen with Patio doors leading onto the front decking.

Moving to the rear there is a utility room and hall storage cupboard. The Master Bedroom with en-suite shower room and walk-in wardrobe. The second bedroom has a Jack and Jill walk-through Wardrobe leading to the large family bathroom with bath and shower over bath. Completely unique and truly timeless: this residential home has it all.



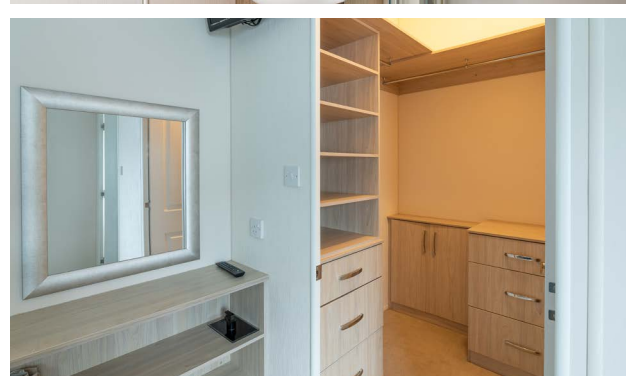
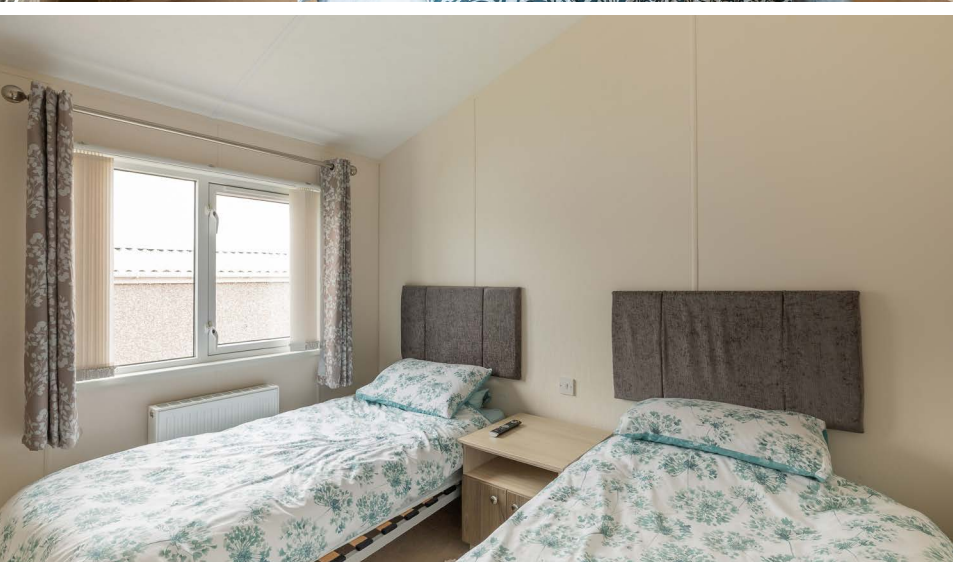
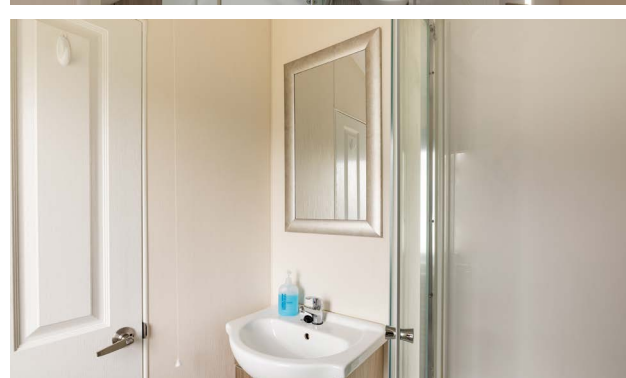
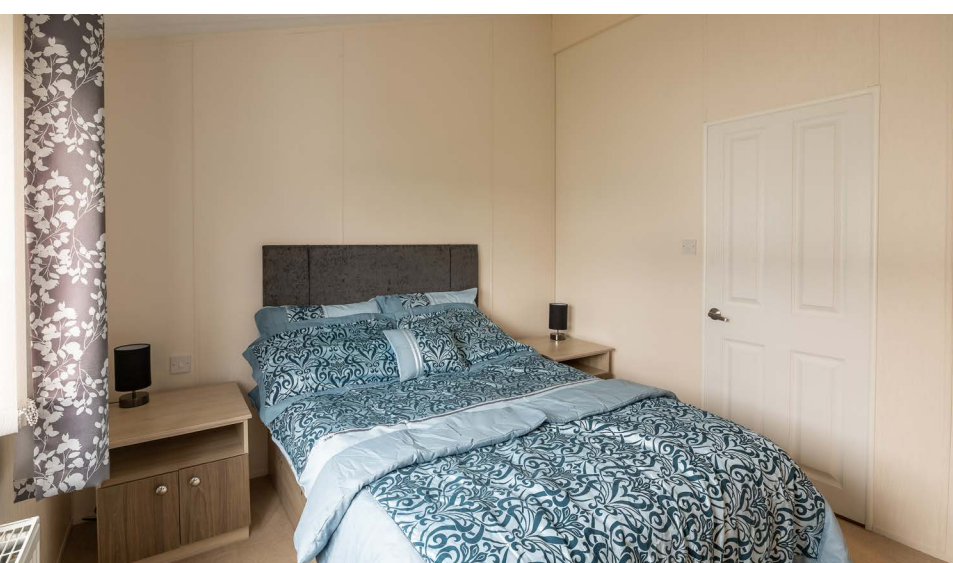
Key Features:

- Patio Doors lead to - Large front decking
- Fully fitted kitchen with island unit and bedroom furniture
- Induction hob, grill and oven, dishwasher, American fridge/freezer, dual washer/dryer and wine rack
- Two colour co-ordinated leather sofas, curtains, and carpets
- Dining table including six chairs, coffee table and TV cabinet
- Energy-efficient A Rated boiler
- Direct feed LPG
- Tarmacked Driveway
- Lock Block paved rear drying area
- Park approved large Garden Shed



open-plan area







The Bathroom





Approximate Dimensions
(Taken from the widest point)

Open Plan Living	2.29m (7'6") x 0.75m (2'6")	En-suite	1.70m (5'7") x 1.70m (5'7")
Bedroom 1	3.30m (10'10") x 2.90m (9'6")	Gross internal floor area (m ²): N/A EPC Rating: N/A	
Bedroom 2	2.90m (9'6") x 2.80m (9'2")		
Bathroom	2.60m (8'6") x 2.00m (6'7")		



*2021/22 Yearly
Site Fees Price on
Application (covers
water, sewerage,
and electricity
infrastructure) Pitch
fee reviewed annually
on 1st March.*

*Additional Charges:
Gas – is meter read
and paid to the park
quarterly. Electricity –
is meter read and paid
to the park quarterly.*



Riverview Country Park is a few miles west of the attractive town of Forres is situated on the Moray coast, approximately 25 miles East of Inverness on the A96 trunk route which also connects the European Energy Hub of Aberdeen. The population of Forres is around 12,000 inhabitants.

There are few areas of Scotland that offer such a wide range of attractions steeped in historical interest as Moray and the Moray Coast. is varied and breath-taking. Forres has been a winner of Britain in Bloom award on numerous occasions.

Inverness Airport is 20 miles away and enjoys excellent air links to many UK and International destinations. Moray is also home to no fewer than fifty-one malt whisky distilleries, many of which are open to visitors. Forres itself has two distilleries, the Benromach and the Dallas Dhu, and are included in the Scottish Whisky Trail. One hour to the South of Forres, the Cairngorm Mountains offer mountain biking, walking, skiing and snowboarding to suit all abilities.



The Location

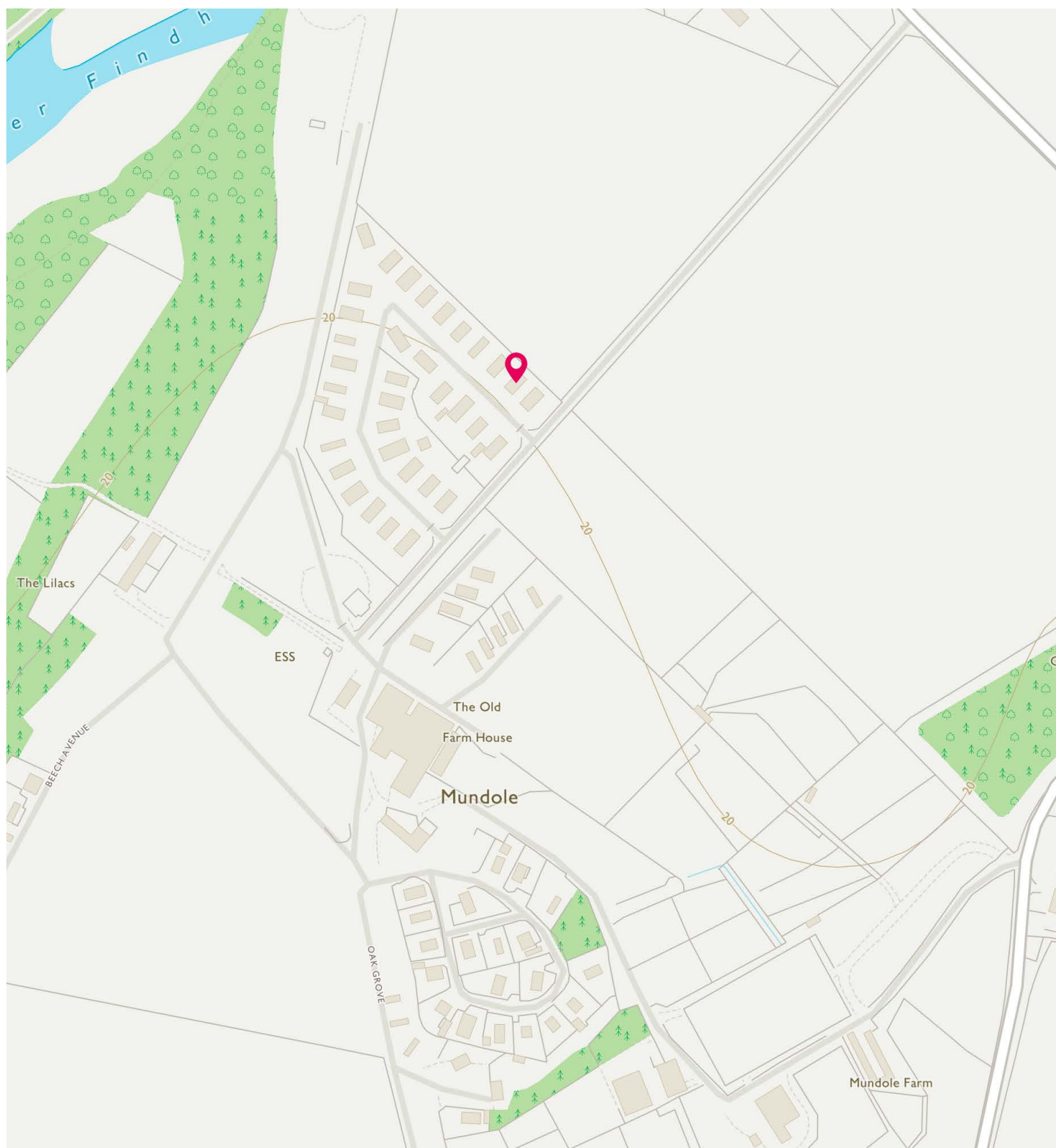


Image credit: <https://www.ordnancesurvey.co.uk/osmap/>

McEwan Fraser Legal

Solicitors & Estate Agents

Tel. 0131 524 9797

www.mcewanfraserlegal.co.uk

info@mcewanfraserlegal.co.uk

Part
Exchange
Available



Text and description
SCOTT MARSHALL
Surveyor



Layout graphics and design
ALAN SUTHERLAND
Designer

Disclaimer: The copyright for all photographs, floorplans, graphics, written copy and images belongs to McEwan Fraser Legal and use by others or transfer to third parties is forbidden without our express consent in writing. Prospective purchasers are advised to have their interest noted through their solicitor as soon as possible in order that they may be informed in the event of an early closing date being set for the receipt of offers. These particulars do not form part of any offer and all statements and photographs contained herein are for illustrative purposes and are not guaranteed or warranted. Buyers must satisfy themselves for the accuracy and authenticity of the brochure and should always visit the property to satisfy themselves of the property's suitability and obtain in writing their solicitor what's included with the property including any land. The dimensions provided may include, or exclude, recesses intrusions and fitted furniture. Any measurements provided are for guide purposes only and have been taken by electronic device at the widest point. Any reference to alterations to, or use of, any part of the property does not mean that any necessary planning, building regulations or other consent has been obtained. A buyer must find out by inspection or in other ways that all information is correct. None of the appliances/services stated or shown in this brochure have been tested by ourselves and none are warranted by our seller or MFL.