

# 2/1, 150 Sword Street

GLASGOW, G31 1SE



*SPACIOUS THREE-BED APARTMENT - GOOD  
CONDITION, DENNISTOUN AREA.*



0131 524 9797



[www.mcewanfraserlegal.co.uk](http://www.mcewanfraserlegal.co.uk)



[info@mcewanfraserlegal.co.uk](mailto:info@mcewanfraserlegal.co.uk)





These traditional tenement apartments have eternal buyers appeal, given their spacious and flexible accommodation, high ceilings, lovely cornice detail, and exceptional value for money offering.

The spacious accommodation comprises of a bright lounge/diner with a beautiful large Bay window that floods light into the room. Given the room's shape, it would suit a range of furniture configurations whilst still allowing for a dining table. The galley style kitchen contains a range of floor and wall mounted units, with a gas cooker, and ample space for the free-standing washing machine, fridge freezer and tumble dryer.

The tiled bathroom is fresh and bright, with a white suite and a shower over the bath. There are three bedrooms in total, all are spacious and bright, with ample room for free-standing furniture. The home is kept warm, secure and comfortable via the gas central heating and secure door entry system. There is also plenty of storage space to keep the apartment clutter-free at all times.

There is a communal drying area to the rear of the apartment and parking is plentiful and on-street. This is a great apartment for any young couple or small family alike. The property offers so much scope for anyone wishing to keep it as it is and move in or create their own interior 'Grand Design' with a fabulous new kitchen, the choice is yours. Early viewing is advised.

**2/1, 150 Sword Street**



The Lounge





**The Kitchen**



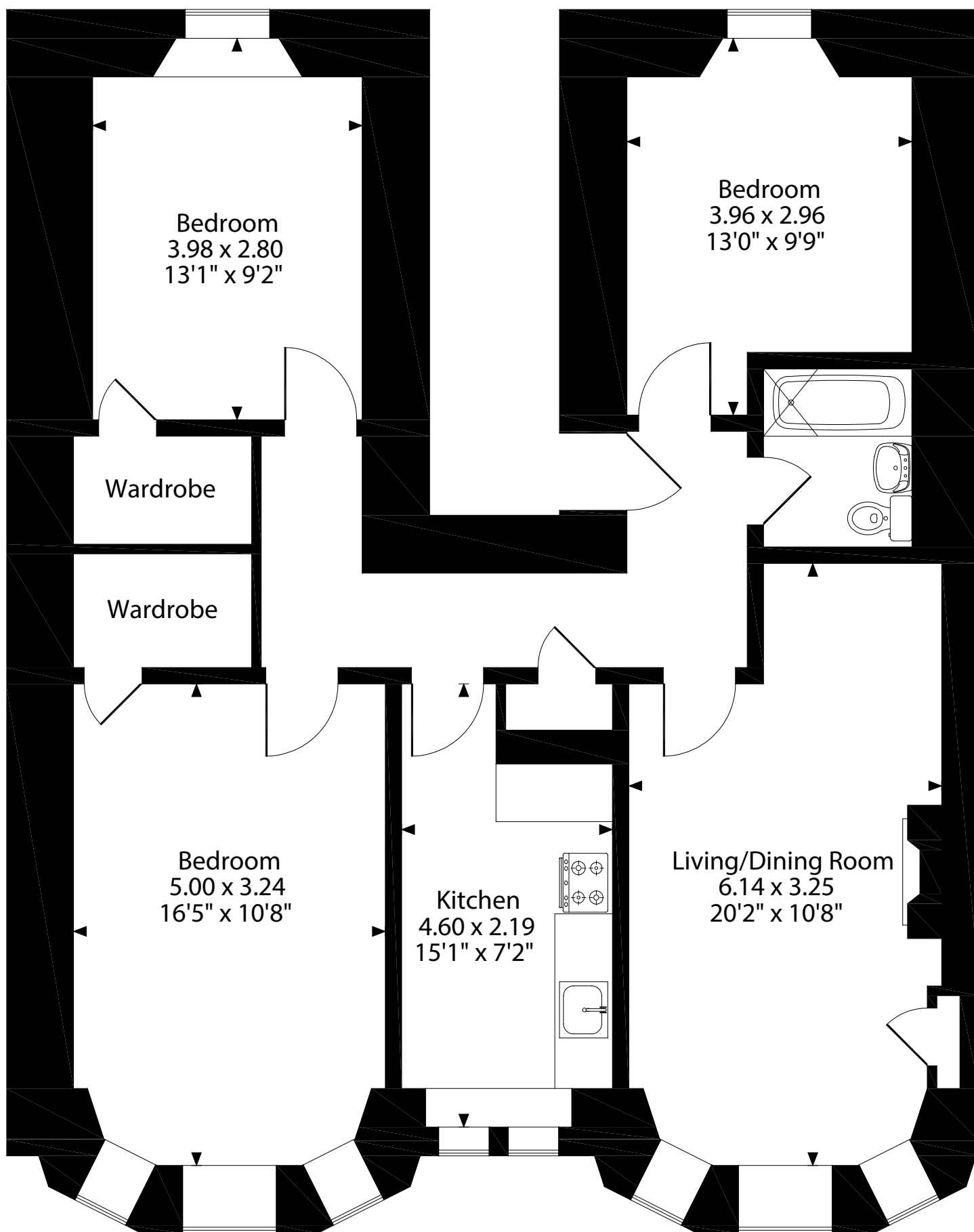


## Bedroom & Bathroom





## Bedrooms



Gross internal floor area (m<sup>2</sup>): 85m<sup>2</sup>

EPC Rating: C



---

We are delighted to offer to the market this spacious three bedroom tenement apartment, set in the popular and vibrant area of Dennistoun. Local shops, cafes and great food outlets are only two minutes away. The area benefits from very regular public transport links, both by road and rail to the heart of the city in fifteen minutes or less, with the train station placed less than a minutes walk from the apartment. The area also has a large Victorian Park, 'Alexandra Park', which is perfect for those who like to walk and keep active.

Glasgow's Royal Infirmary is a short distance away, as is the City Park business complex which houses a wide range of major businesses. Glasgow International Airport is located only seven miles away and the motorway links mean all areas of central Scotland are easily attainable on a daily basis.

---

## The Location

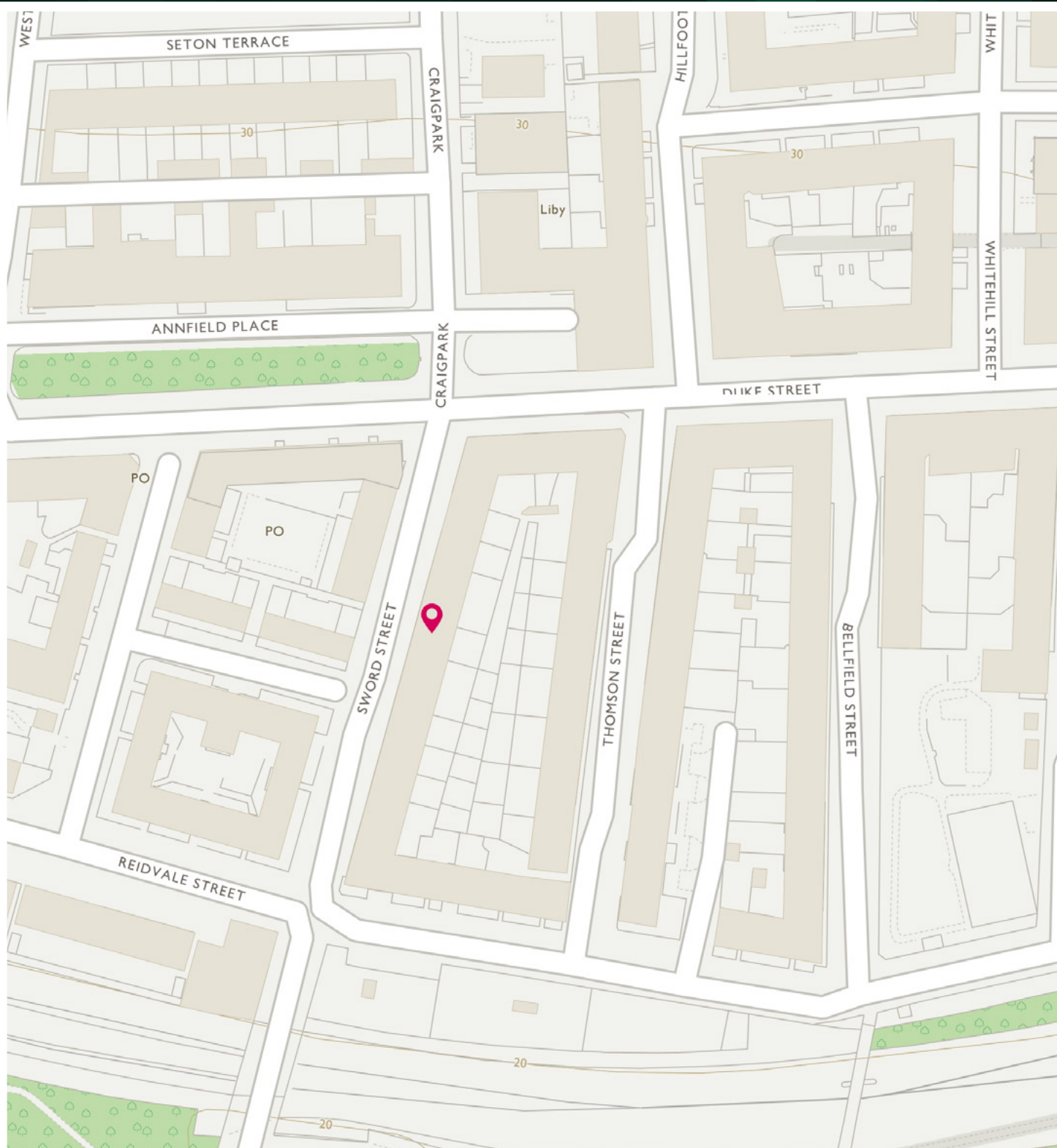


Image credit: <https://www.ordnancesurvey.co.uk/osmap/>

# McEwan Fraser Legal

Solicitors & Estate Agents

Tel. 0131 524 9797

[www.mcewanfraserlegal.co.uk](http://www.mcewanfraserlegal.co.uk)

[info@mcewanfraserlegal.co.uk](mailto:info@mcewanfraserlegal.co.uk)

Part  
Exchange  
Available



Text and description  
**KEN MEISAK**  
Area Sales Manager



Layout graphics and design  
**ALAN SUTHERLAND**  
Designer

**Disclaimer:** The copyright for all photographs, floorplans, graphics, written copy and images belongs to McEwan Fraser Legal and use by others or transfer to third parties is forbidden without our express consent in writing. Prospective purchasers are advised to have their interest noted through their solicitor as soon as possible in order that they may be informed in the event of an early closing date being set for the receipt of offers. These particulars do not form part of any offer and all statements and photographs contained herein are for illustrative purposes and are not guaranteed or warranted. Buyers must satisfy themselves for the accuracy and authenticity of the brochure and should always visit the property to satisfy themselves of the property's suitability and obtain in writing via their solicitor what's included with the property including any land. The dimensions provided may include, or exclude, recesses intrusions and fitted furniture. Any measurements provided are for guide purposes only and have been taken by electronic device at the widest point. Any reference to alterations to, or use of, any part of the property does not mean that any necessary planning, building regulations or other consent has been obtained. A buyer must find out by inspection or in other ways that all information is correct. None of the appliances/services stated or shown in this brochure have been tested by ourselves and none are warranted by our seller or MFL.