

42 Hillview Drive

CORPACH, FORT WILLIAM, PH33 7LS



*A RARE HIGHLAND RETREAT WITH 3
BEDROOMS AND PANORAMIC BEN NEVIS VIEWS*



01397 600 006



www.mcewanfraserlegal.co.uk



info@mcewanfraserlegal.co.uk





Tucked away in the peaceful seclusion of a quiet cul-de-sac, Invereil occupies an enviable position at the end of Hillview Drive in the sought-after village of Corpach. This charming three-bedroom detached home boasts uninterrupted, panoramic views of Ben Nevis and the Nevis Range, visible right from the comfort of your lounge or back garden—a truly inspiring Highland backdrop.

Set well back from the road, Invereil offers a rare sense of space, privacy, and connection to nature, with gardens wrapping around three sides that have previously been frequented by red deer stags, roe deer with their young, pine martens, hedgehogs, pheasants, ducks, and more. The outdoor space is perfect for relaxing, entertaining, or expanding with a future extension, studio, garden room, or summerhouse (subject to planning).

From dawn till dusk, natural light floods this delightful home. The sun rises at the rear, moves gracefully around the house, and bathes the front-facing rooms in golden evening light. It's this daily display of natural beauty that first captivated the current owner—and it's easy to see why.

The Property



Inside, the home is a harmonious blend of contemporary comfort and Highland charm. Over recent years, thoughtful upgrades have included a new roof, double glazing, an efficient air source heat pump system supplying hot water and central heating, and the welcoming warmth of an Aga multi-fuel burner in the lounge.

The compact yet well-equipped kitchen offers everything you need, while the open-plan lounge and dining room provide a generous, light-filled space to relax, dine, and enjoy the spectacular mountain views. The hallway doubles as a handy office area, ideal for working from home.

The Property





A downstairs double bedroom—currently enjoyed as a tranquil reading den and occasional guest room—adds flexibility, while upstairs, two further generous double bedrooms and a bright shower room complete the layout. Each upstairs bedroom enjoys open outlooks and is filled with natural light.





Bedroom 1





Bedroom 2



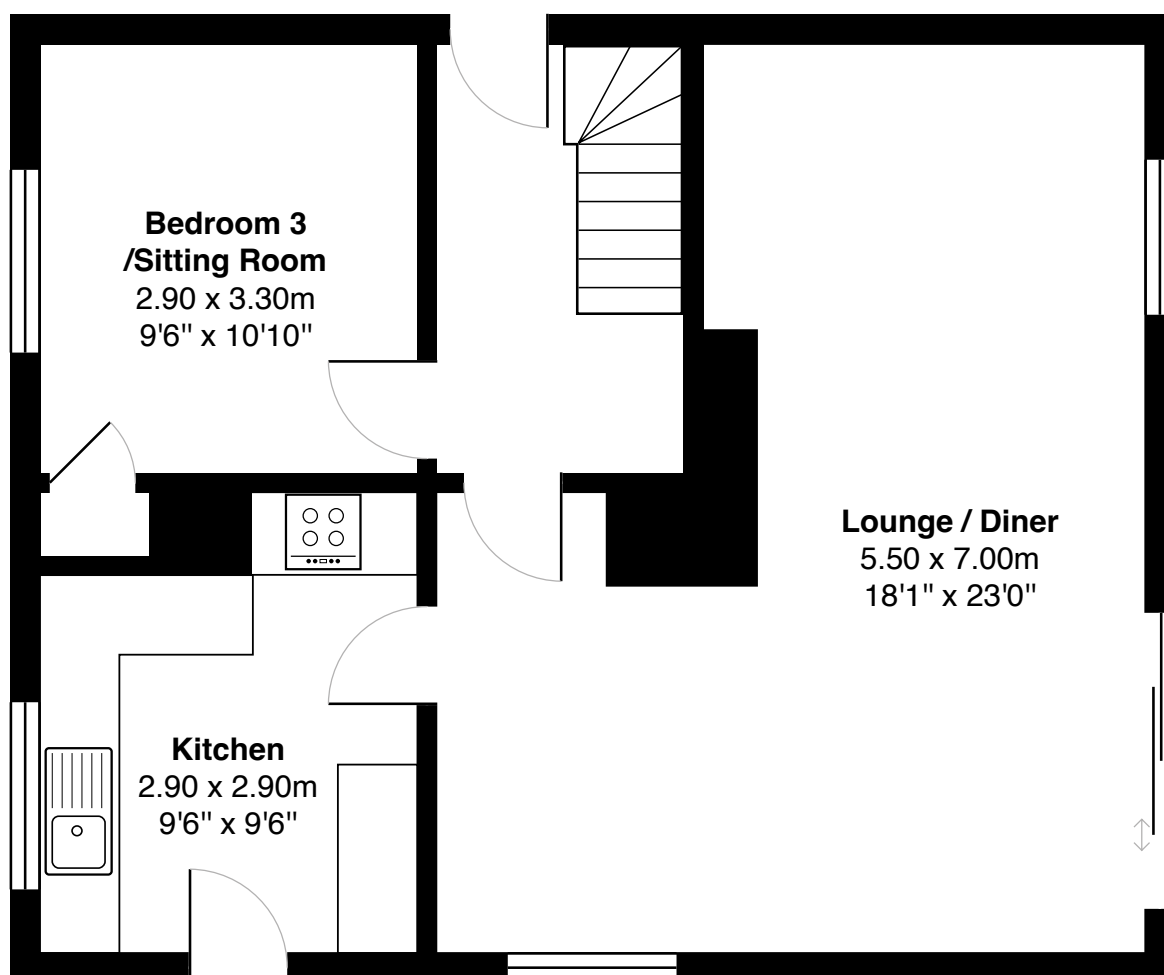
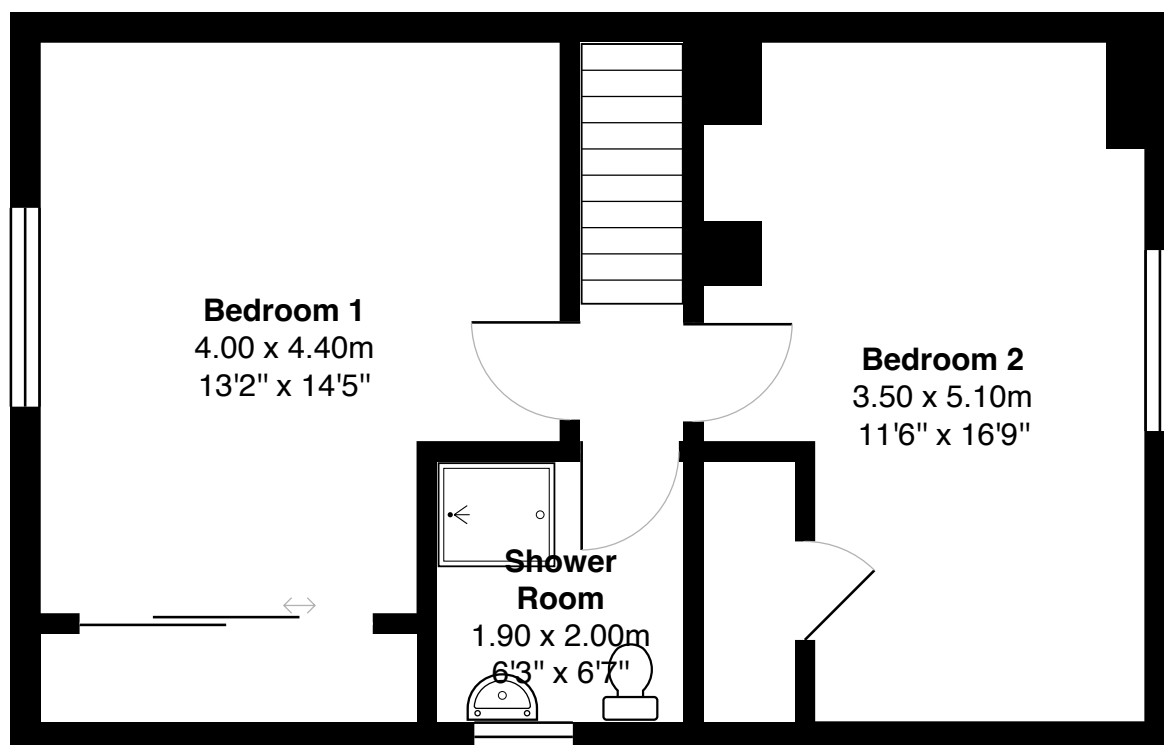




KEY FEATURES:

- Prime end-of-cul-de-sac position with complete privacy
- Uninterrupted views of Ben Nevis and the Nevis Range
- Three double bedrooms
- Gardens to three sides with ample parking for multiple cars
- Potential for future extensions or garden structures (STP)
- Air source heat pump, double glazing, and Aga multi-fuel burner
- Sunlight throughout the day, from back to front
- 10-minute walk to local amenities and the marina café at Corpach Basin
- 15-minute walk to Neptune's Staircase and the Moorings Hotel

With its unbeatable views, light-filled rooms, and access to both nature and community, this property offers an exceptional opportunity to live your Highland dream.



Gross internal floor area (m²): 104m²

EPC Rating: D



While nestled in a quiet, family-friendly cul-de-sac, Invereil is just a 10-minute walk from a vibrant local hub featuring the community centre, Co-op shop (with post office), Tradewinds Bar, and the Corpach Basin, where you'll find canal locks, a marina café, and breathtaking views across Loch Linnhe to Fort William and Ben Nevis. Head in the opposite direction and you're just 15 minutes on foot from the impressive Neptune's Staircase canal locks, the Moorings Hotel and the popular Lochy bar—perfect for leisurely strolls or dining out without needing the car.





Located at the foot of Ben Nevis, the UK's highest mountain, Fort William is a renowned destination for walkers, climbers, and outdoor enthusiasts. The town sits on the shores of Loch Linnhe and offers a wealth of water sports, mountain biking, hiking, and skiing at the nearby Nevis Range.

Steeped in history and Highland culture, Fort William is home to landmarks like the West Highland Museum and the atmospheric ruins of Inverlochy Castle.

The area is well-connected, with Fort William serving as a stop on the scenic West Highland Line, one of the most beautiful railway journeys in the world, and as the endpoint of the Great Glen Way and the Caledonian Canal. Visitors can also enjoy a ride on the iconic Jacobite Steam Train, which crosses the famous Glenfinnan Viaduct (as seen in the Harry Potter franchise) —a must-see for film and railway fans alike.

Corpach lies on the A830 Road to the Isles, guiding you westward through breathtaking Highland scenery to Glenfinnan, Morar, Mallaig, and onward by ferry to the Isle of Skye and the Inner Hebrides.



McEwan Fraser Legal

Solicitors & Estate Agents

Tel. 01397 600 006

www.mcewanfraserlegal.co.uk

info@mcewanfraserlegal.co.uk

Part
Exchange
Available



Text and description
CRAIG PETERS
Surveyor



Layout graphics and design
ALAN SUTHERLAND
Designer

Disclaimer: The copyright for all photographs, floorplans, graphics, written copy and images belongs to McEwan Fraser Legal and use by others or transfer to third parties is forbidden without our express consent in writing. Prospective purchasers are advised to have their interest noted through their solicitor as soon as possible in order that they may be informed in the event of an early closing date being set for the receipt of offers. These particulars do not form part of any offer and all statements and photographs contained herein are for illustrative purposes and are not guaranteed or warranted. Buyers must satisfy themselves for the accuracy and authenticity of the brochure and should always visit the property to satisfy themselves of the property's suitability and obtain in writing via their solicitor what's included with the property including any land. The dimensions provided may include, or exclude, recesses intrusions and fitted furniture. Any measurements provided are for guide purposes only and have been taken by electronic device at the widest point. Any reference to alterations to, or use of, any part of the property does not mean that any necessary planning, building regulations or other consent has been obtained. A buyer must find out by inspection or in other ways that all information is correct. None of the appliances/services stated or shown in this brochure have been tested by ourselves and none are warranted by our seller or MFL.