



# *Wedale House*

CHURCH WYND, STOW, SCOTTISH BORDERS, TD1 2QU





Stow, or more formally, 'Stow of Wedale' is a historic, small picturesque village nestling in a bend of the beautiful Galawater Valley in the Scottish Borders. Straddled by the A7, the village of Stow is well placed for the commuter, just twenty-five miles south of Edinburgh city centre and just ten minutes away from the central Borders town of Galashiels. Similarly, it is within easy access of many of the other old border towns and villages within the region.

The village enjoys an active community. If exercise and fresh air is your thing, there is a wide range of walking routes in and around Stow, allowing you to sample the tranquillity of the Borders' countryside. Also on offer are facilities such as a village store/Post Office, bowling green, park, playgroup, coffee shop/gallery, new health centre, town hall, multi-sports court, church and a modern primary school. A wider range of shopping and recreational amenities, as well as secondary schooling, is on hand in the larger nearby town of Galashiels.

Galashiels also boasts a cinema, swimming pool, numerous shops and two large twenty-four-hour supermarkets all within easy reach of the A7. Stow benefits from a half hourly bus service to Edinburgh city centre. The Borders railway is now operational with a half-hourly service, at peak times, seven days a week. The rail line runs from Tweedbank, in the Scottish Borders, stopping at Stow and terminating at Edinburgh Waverley, connecting to the national and international rail network within an hour. More specifically, the Stow rail station is a matter of minutes walk from the property and will allow commuters easy access to Edinburgh city centre within approximately forty-five minutes.

*Stow, Scottish Borders*





An attractive and substantial family home set in an elevated position within the Borders town of Stow. Set in its own grounds with a generous garden, ample parking and detached outbuilding currently set up as an office.

Accommodation comprises of:

**Ground Floor:**

Entrance porch, hallway, drawing room, dining room, kitchen/breakfast room, laundry room, WC.

**First Floor:**

Landing, sitting room, principal bedroom with WC, two further bedrooms, bathroom.

**Second Floor:**

Three bedrooms, seventh bedroom/study, bathroom, WC.

**Basement:**

Two storage cellars.

**Outside:**

Detached annexe with shower room, garden, greenhouse, triple carport, driveway parking.



# The Drawing Room





*The Dining Room and Sitting Room*





# *The Kitchen and Laundry Room*



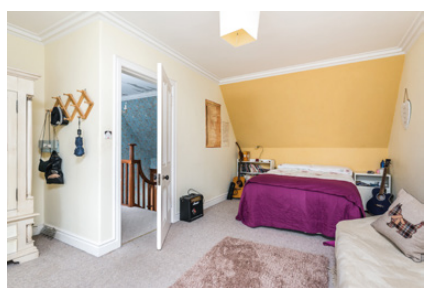


# Landings and Bedrooms



"An attractive and substantial family home"



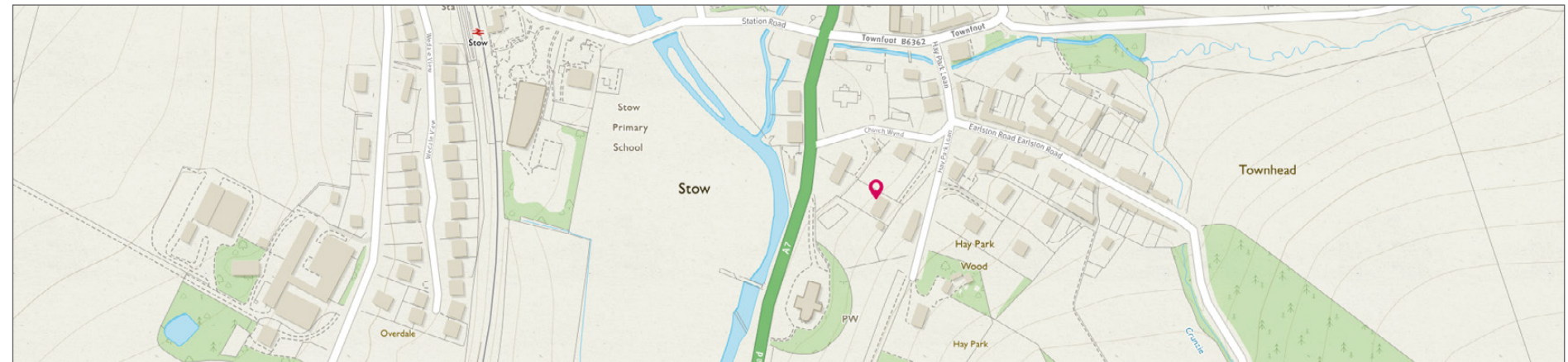
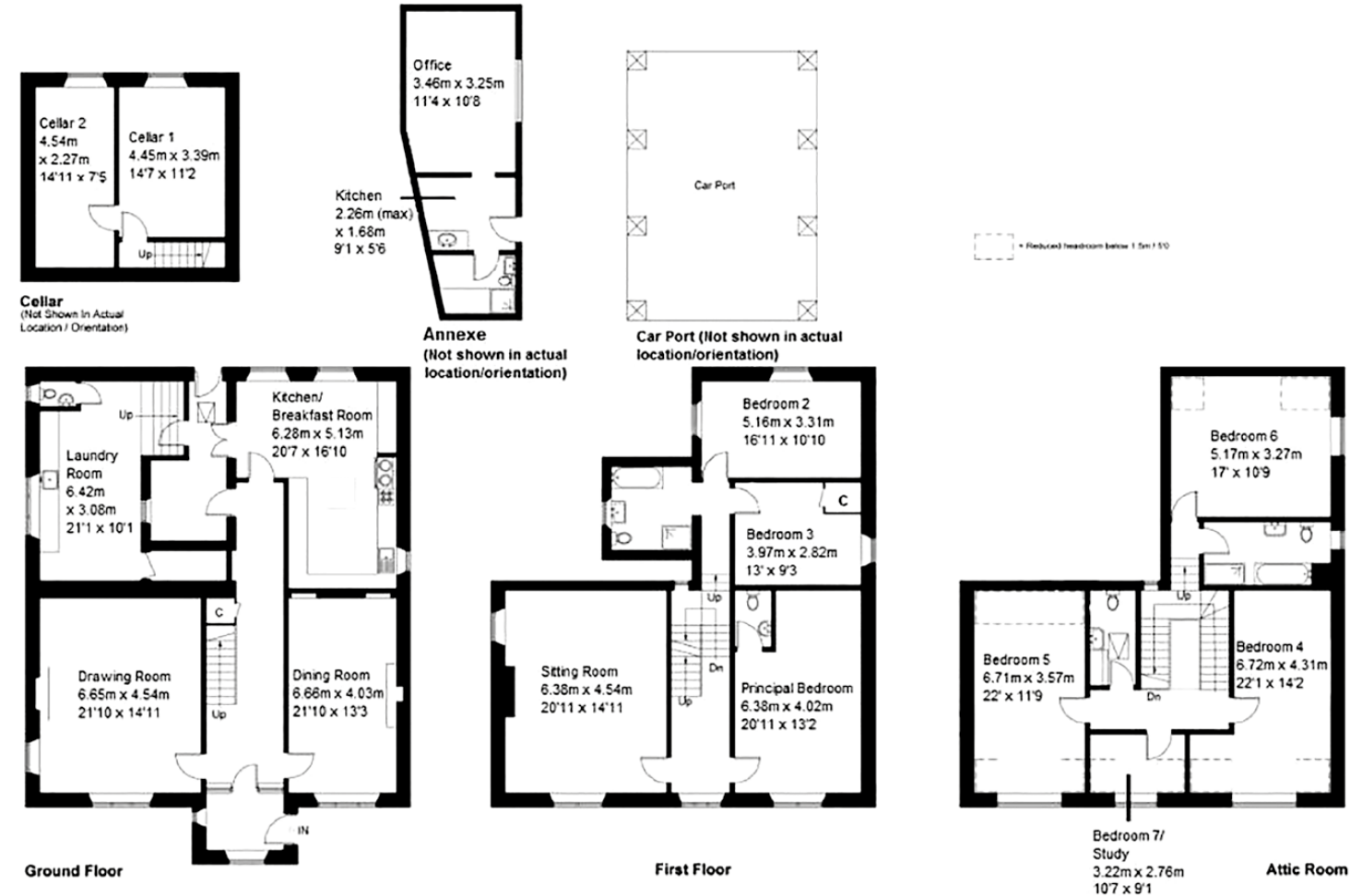


# The Bedrooms





*Details*



*The Bathrooms, WC and Annexe*





# McEwan Fraser Legal

Solicitors & Estate Agents

Tel. 01896 800 440  
[www.mcewanfraserlegal.co.uk](http://www.mcewanfraserlegal.co.uk)  
[info@mcewanfraserlegal.co.uk](mailto:info@mcewanfraserlegal.co.uk)

Part  
Exchange  
Available

**Disclaimer:** The copyright for all photographs, floorplans, graphics, written copy and images belongs to McEwan Fraser Legal and use by others or transfer to third parties is forbidden without our express consent in writing.

Prospective purchasers are advised to have their interest noted through their solicitor as soon as possible in order that they may be informed in the event of an early closing date being set for the receipt of offers. These particulars do not form part of any offer and all statements and photographs contained herein are for illustrative purposes and are not guaranteed. Buyers must satisfy themselves for the accuracy and authenticity of the brochure and should always visit the property to satisfy themselves of the property's suitability. The dimensions provided may include, or exclude, recesses intrusions and fitted furniture. Any measurements provided are for guide purposes only.



Text and description  
**DEREK WEBSTER**  
 Surveyor



Professional photography  
**VIKTOR VASS**  
 Photographer



Layout graphics and design  
**ALLY CLARK**  
 Designer