




McEwan Fraser Legal

Solicitors & Estate Agents

0131 524 9797

98/2F2 East Claremont Street

BELLEVUE, EDINBURGH, EH7 4JZ



The Local Area

Bellevue is an exclusively residential district on the fringe of the New Town, on its north-east flank, close to Canonmills. It consists of a wide variety of mainly Georgian style tenement properties. Very similar to the architecture of the New Town, but interspersed with a variety of more modern properties. Needless to say, this is an exceptionally central location which is within walking distance to all the capital has to offer.

The city's best shopping facilities are available on Princes Street. George Street provides banking, building societies and other financial services, as well as excellent bars and restaurants. This is the transport hub to the rest of the country, with trains, buses and now trams regularly leaving the area, whilst from Waverley Bridge, via Princes Street and the West End there is a bus service to Edinburgh Airport. The West End is of course, where Edinburgh's entertainment facilities tend to be very highly concentrated. Here there is the Usher Hall, the Lyceum Theatre, all manner of restaurants and bars, indoor sports facilities and Health Clubs. These facilities are no more than a comfortable walk away.

For those who prefer open-air recreational facilities it is only a short trip to the Botanic Gardens and Inverleith Park, whilst from Warriston, the routes of old railway lines radiate out in a variety of directions providing interesting new perspectives on otherwise familiar parts of the city.





98/2F2 East Claremont Street

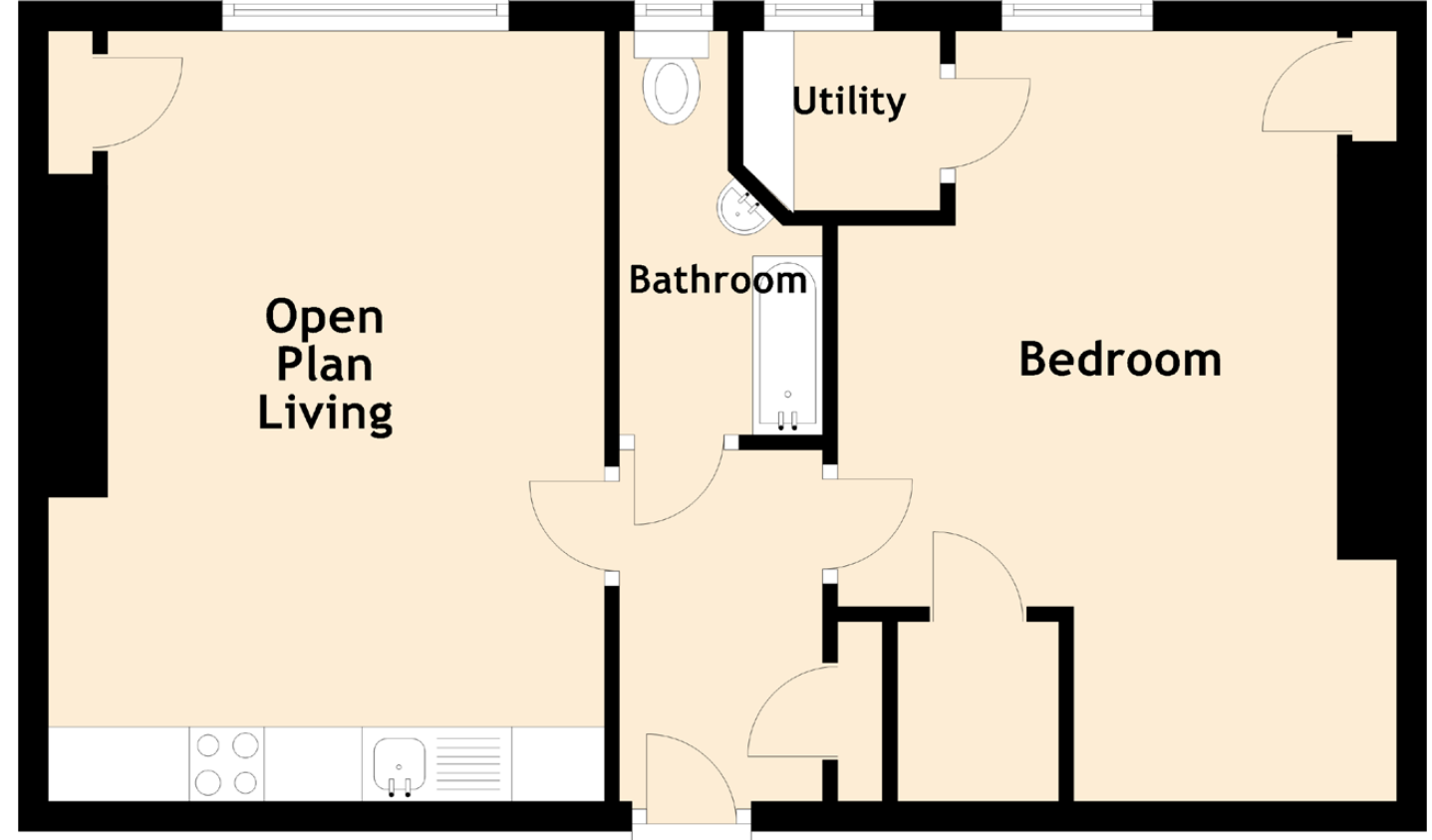
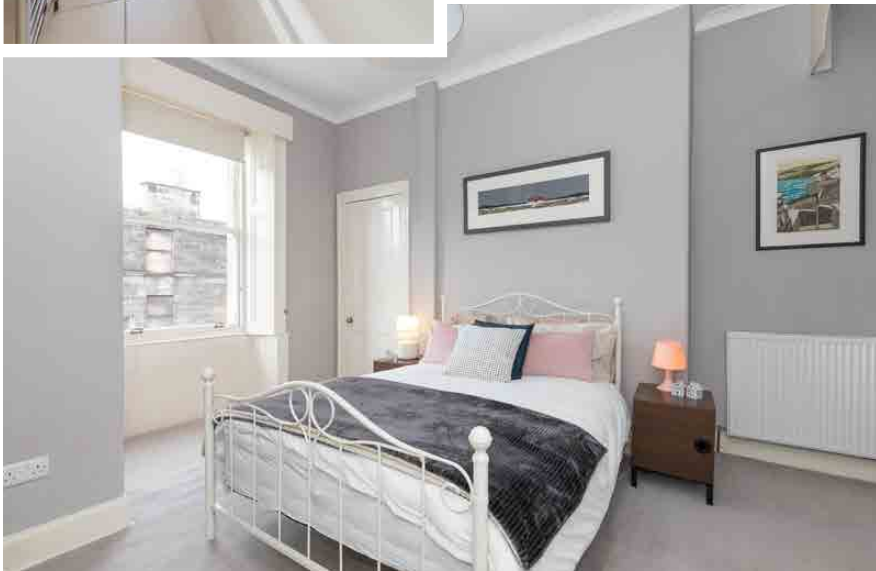
McEwan Fraser Legal are delighted to bring to the open market this desirable one-bed second floor flat well located within the popular Bellevue area of Edinburgh.

Internally the accommodation is in excellent condition and ready to move in. The building has a secure entry and the property comprises a welcoming entrance hallway with storage and access to all the rooms. The comfortable and freshly presented open lounge/kitchen is flooded with natural light whilst allowing space for dining. This room benefits from original features including attractive cornice and working shutters as a welcomed addition. The modern kitchen comes with wall and floor units an integrated gas hob, oven, extractor hood, fridge freezer and dishwasher. The bright double bedroom is flooded with natural light boasting one large walk-in cupboard, a utility area and ample space for free-standing furniture. The modern partially tiled bathroom completes the rooms with a mains shower over the bath, a wash hand basin, WC and towel radiator.

This property further benefits from a well kept communal garden with laid lawn to the rear, sash and case windows and gas central heating, making for a cosy yet efficient flat.

Early viewing is highly recommended as this properties condition and location will be popular with a variety of buyers.





Approximate Dimensions
(Taken from the widest point)

Open Plan Living	5.15m (16'11") x 3.72m (12'2")
Bedroom	5.11m (16'9") x 3.34m (10'11")
Bathroom	2.70m (8'10") x 1.36m (4'6")
Utility	1.32m (4'4") x 1.20m (3'11")

Gross internal floor area (m²): 47m²
EPC Rating: C

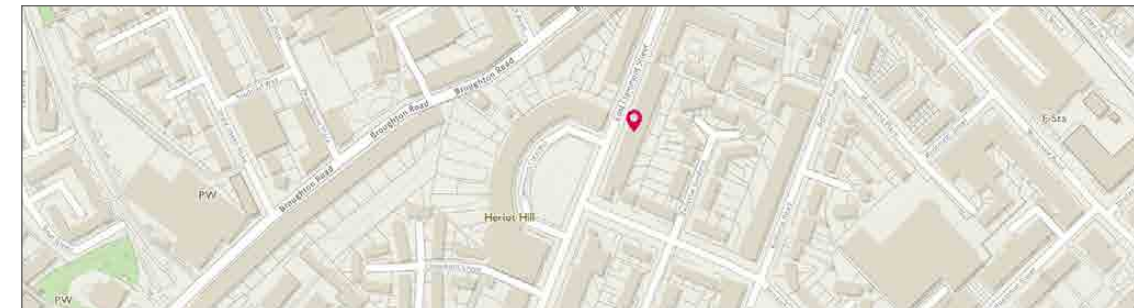


Image credit: <https://www.ordnancesurvey.co.uk/osmaps/>

View from Property



McEwan Fraser Legal Solicitors & Estate Agents

Tel. 0131 524 9797
www.mcewanfraserlegal.co.uk
info@mcewanfraserlegal.co.uk

Part
Exchange
Available

Disclaimer: The copyright for all photographs, floorplans, graphics, written copy and images belongs to McEwan Fraser Legal and use by others or transfer to third parties is forbidden without our express consent in writing. Prospective purchasers are advised to have their interest noted through their solicitor as soon as possible in order that they may be informed in the event of an early closing date being set for the receipt of offers. These particulars do not form part of any offer and all statements and photographs contained herein are for illustrative purposes and are not guaranteed or warranted. Buyers must satisfy themselves for the accuracy and authenticity of the brochure and should always visit the property to satisfy themselves of the property's suitability and obtain in writing via their solicitor what's included with the property including any land. The dimensions provided may include, or exclude, recesses intrusions and fitted furniture. Any measurements provided are for guide purposes only and have been taken by electronic device at the widest point. Any reference to alterations to, or use of, any part of the property does not mean that any necessary planning, building regulations or other consent has been obtained. A buyer must find out by inspection or in other ways that all information is correct. None of the appliances/services stated or shown in this brochure have been tested by ourselves and none are warranted by our seller or MFL.



Text and description
GARY WALES
Surveyor



Professional photography
ROSS MCBRIDE
Photographer



Layout graphics and design
ALAN SUTHERLAND
Designer