

# 6 Strathgoil Crescent

AIRDRIE, ML6 6ED



*A perfect home for any family to enjoy,  
beautifully extended and upgraded*



01698 537 177



[www.mcewanfraserlegal.co.uk](http://www.mcewanfraserlegal.co.uk)



[info@mcewanfraserlegal.co.uk](mailto:info@mcewanfraserlegal.co.uk)



Part Exchange available. We are delighted to bring to the market this stunning four-bed detached family home, set in a very popular family friendly street that's known for its neighbourly spirit. Some of the values that make a community are very much alive here, the neighbours know each other and the streets are safe for the kids to play out in peace.

This lovely home makes a perfect place to raise a family, given its extended accommodation, generous proportions, secure garden and immaculate condition.

## THE LOUNGE



The accommodation comprises a bright and spacious lounge with a feature fireplace, which given the shape of the room would suit a range of furniture configurations.

The lounge leads beautifully to the formal dining room, offering the perfect space for entertaining friends and family on more formal dining occasions. Space, convenience and comfort abound in this lovely home and never more so than in the extended family room, which is flooded with natural light from the large windows leading out to the south-facing garden and entertainment deck.

# THE FAMILY/DINING ROOM



# THE KITCHEN & UTILITY



The beautiful double-galley kitchen makes a fantastic 'hub' for the family around meal times. It's perfect for the home, finished in a lovely range of White fitted units. There's a gas hob, electric oven and ample space for the freestanding dishwasher, it's a great space for the chef to serve up the family favourites. The utility room is an amazing size and has been thoughtfully finished in a great range of units, with an American style fridge freezer and ample space for a washing machine, tumble dryer, and a table top fridge. The downstairs cloakroom toilet has been thoughtfully placed off the utility room with easy access for the kids to use.





The tiled family bathroom is bright and fresh and finished in a white suite with a large standalone mains shower and a bath. There's always an instant and endless supply of hot water for long refreshing showers. There are four very spacious bedrooms in this lovely home, all with ample space for free-standing furniture. They are all extremely well appointed with bedrooms 2 and 3 sharing a stunning Jack and Jill bathroom with a large standalone mains shower.

## THE BATHROOM



The master bedroom as expected in this executive quality home is en-suite and benefits from a large standalone shower enclosure and a white suite. However the unexpected bonus is a fantastic walk-in wardrobe, you'll need a lot of shoes to fill this amazing storage space!

# THE MASTER BEDROOM



# BEDROOM 2

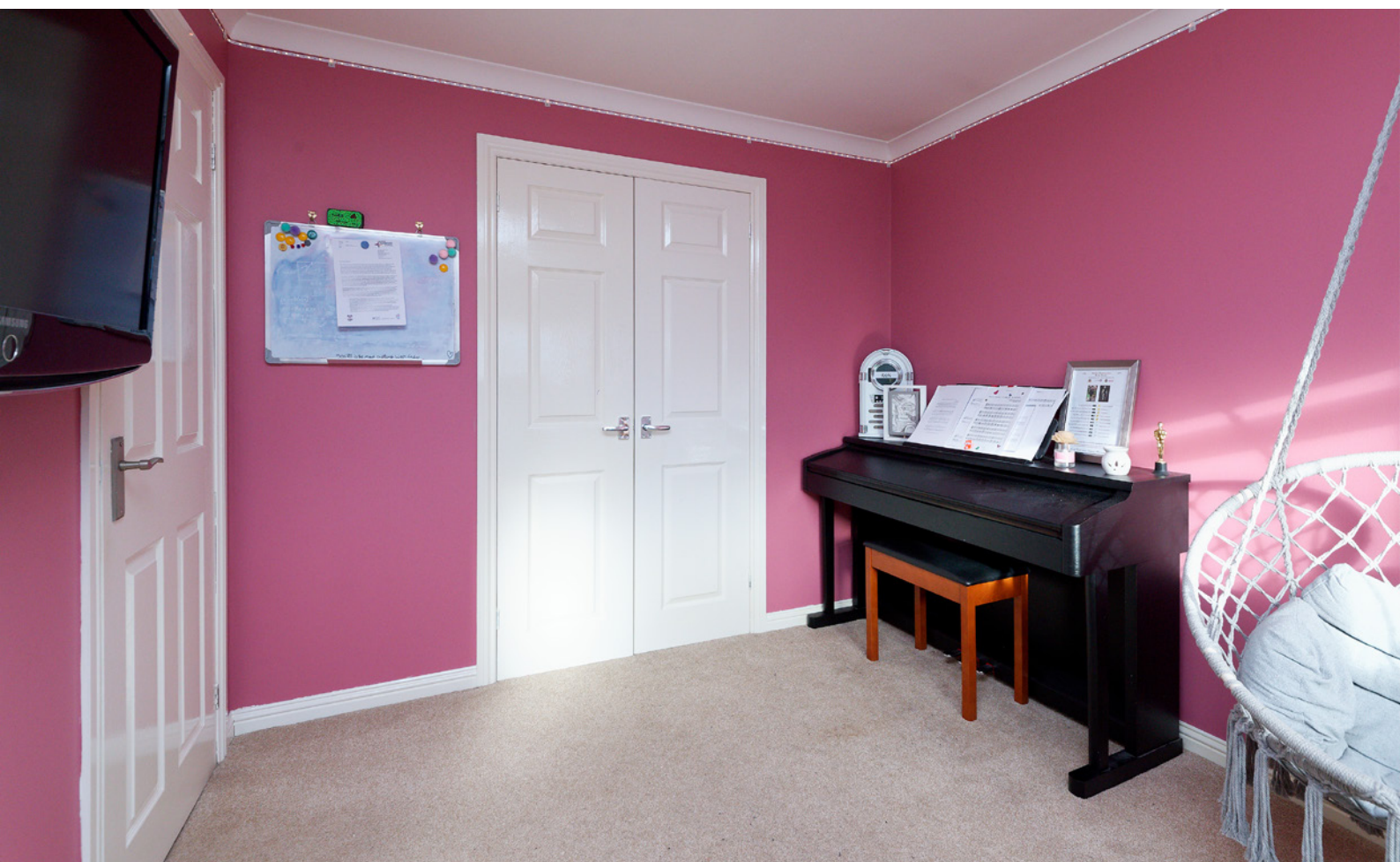


# JACK & JILL EN-SUITE





# BEDROOM 3



# BEDROOM 4



There is an abundance of cupboard spaces throughout the home to help keep everything in its place. The home is kept warm and comfortable via double glazing and gas central heating. The garden space has a shed, is south facing, low maintenance, and secure, and as mentioned earlier the entertainment deck is just 'Uber' cool, it offers a great place to relax, unwind, and enjoy a glass of wine at the end of a hard day. The recently purchased hot tub takes it to another level of sophistication and comfort.

The driveway provides off-street parking for at least four vehicles and the garage/workshop is ideal for anyone who likes to tinker with a hobby. This great home would make an ideal buy for any lucky family. Some properties just tick all the boxes, this is definitely one of them.

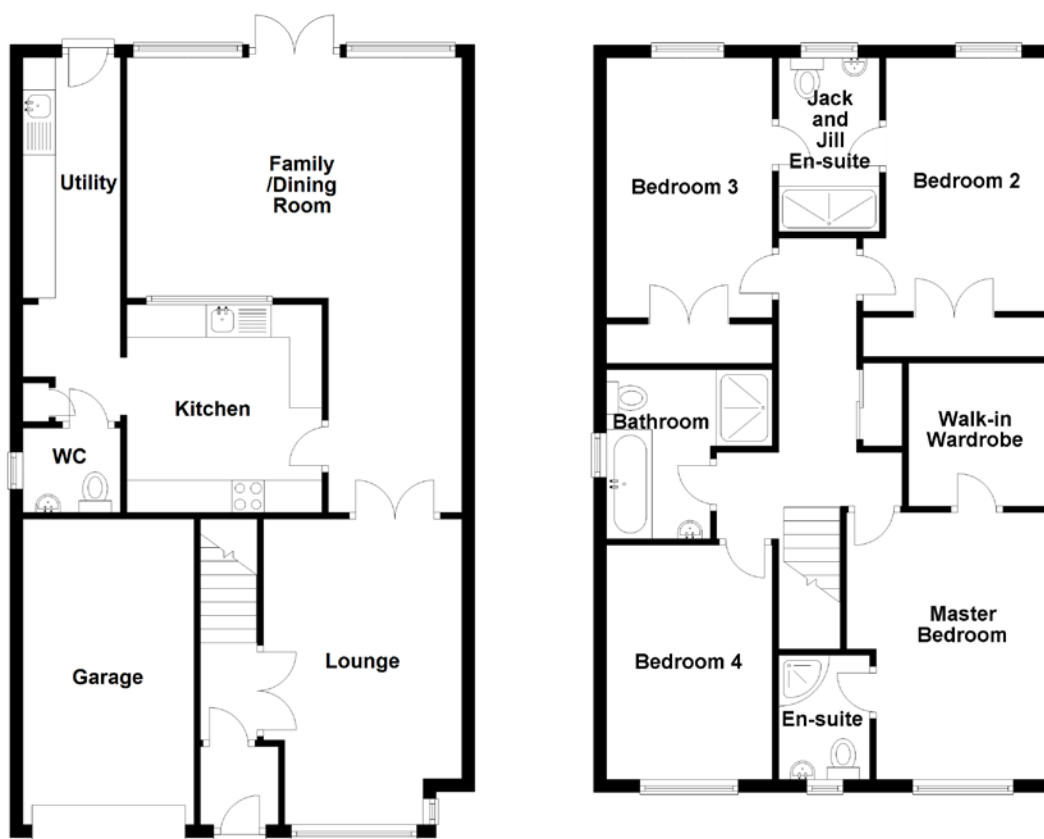
Early viewing is strongly advised to anyone seeking a really comfortable family home with all the hard work already done. Move in, sit down, and start enjoying this beautiful family home.

## THE GARDEN





# FLOOR PLAN, DIMENSIONS & MAP



Approximate Dimensions (Taken from the widest point)

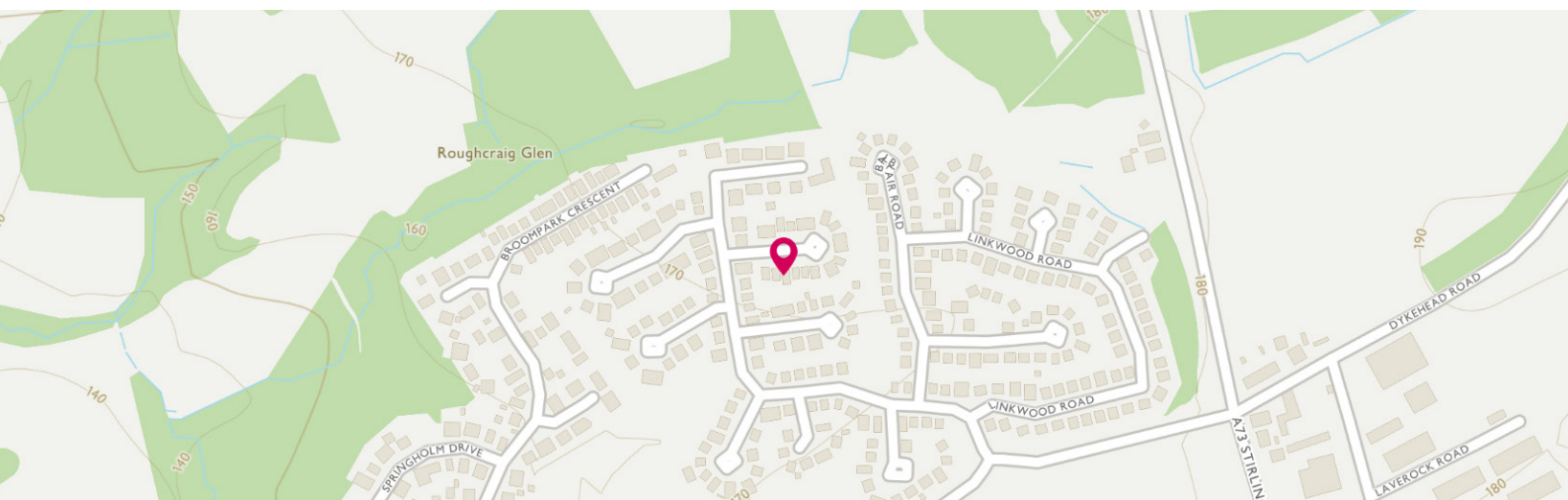
Lounge	4.70m (15'5") x 3.05m (10')
Family /Dining Room	5.15m (16'11") x 3.70m (12'2")
Kitchen	3.20m (10'6") x 3.00m (9'10")
Utility	3.70m (12'2") x 1.50m (4'11")
WC	1.50m (4'11") x 1.30m (4'3")
Master Bedroom	4.10m (13'5") x 3.05m (10')
En-suite	1.91m (6'3") x 1.40m (4'7")
Walk-in Wardrobe	2.20m (7'3") x 2.10m (6'11")
Bedroom 2	3.65m (12') x 2.80m (9'2")

Jack and Jill En-suite	2.70m (8'10") x 1.55m (5'1")
Bedroom 3	3.65m (12') x 2.55m (8'4")
Bedroom 4	3.60m (11'10") x 2.70m (8'10")
Bathroom	2.70m (8'10") x 2.60m (8'6")

Gross internal floor area (m<sup>2</sup>): 145m<sup>2</sup>

EPC Rating: C

Extras (Included in the sale): The Hot Tub and freestanding appliances may be available by separate negotiation.



# THE LOCATION

Strathgoil Crescent is situated in a great location, just a few minutes drive from a great range of local amenities.





Readily available public transport gives easy access to both Cumbernauld, Coatbridge and Airdrie Town Centres, where there is a wide variety of high street shopping, supermarkets, banks, health and recreational facilities.

The property is also well positioned for access to the A80, with the M73, M74, M80 and M8 motorway network systems allowing commuting to other centres of business and commerce throughout central Scotland.



**McEwan Fraser Legal**

Solicitors & Estate Agents

Tel. 0141 404 5474

[www.mcewanfraserlegal.co.uk](http://www.mcewanfraserlegal.co.uk)

[info@mcewanfraserlegal.co.uk](mailto:info@mcewanfraserlegal.co.uk)

Part  
Exchange  
Available



Text and description  
**KEN MEISAK**  
Area Sales Manager



Layout graphics and design  
**ALLY CLARK**  
Designer

**Disclaimer:** The copyright for all photographs, floorplans, graphics, written copy and images belongs to McEwan Fraser Legal and use by others or transfer to third parties is forbidden without our express consent in writing. Prospective purchasers are advised to have their interest noted through their solicitor as soon as possible in order that they may be informed in the event of an early closing date being set for the receipt of offers. These particulars do not form part of any offer and all statements and photographs contained herein are for illustrative purposes and are not guaranteed or warranted. Buyers must satisfy themselves for the accuracy and authenticity of the brochure and should always visit the property to satisfy themselves of the property's suitability and obtain in writing via their solicitor what's included with the property including any land. The dimensions provided may include, or exclude, recesses intrusions and fitted furniture. Any measurements provided are for guide purposes only and have been taken by electronic device at the widest point. Any reference to alterations to, or use of, any part of the property does not mean that any necessary planning, building regulations or other consent has been obtained. A buyer must find out by inspection or in other ways that all information is correct. None of the appliances/services stated or shown in this brochure have been tested by ourselves and none are warranted by our seller or MFL.