



**McEwan Fraser Legal**

Solicitors & Estate Agents

01896 800 440

Gamekeepers Cottage

BORTHWICK HALL, HERIOT, EH38 5YE



The Location

Gamekeepers Cottage is set within the thriving commuter village of Heriot, which enjoys facilities including a highly regarded primary school, a church and a well-utilised Village Hall where all manner of clubs and societies can be found. The property also benefits from high-speed broadband.

Heriot is popular with young families and professionals with a short commute to Edinburgh with the A7 being very close by. The new Borders Railway, with nearby stations in Stow and Gorebridge, is ideal for commuting to Edinburgh, Galashiels and Melrose.

The region is well known for its beauty and the lifestyle it offers and with both country and coastal pursuits on hand it makes the area an attractive and enviable part of the country to reside in. The Scottish Borders is easy to reach with major routes from all

directions touching its boundaries. Traffic free roads and quiet country lanes reveal new breath-taking vistas that change with the seasons, the weather and the light.

A short distance away Glentress and Innerleithen offer some of the best mountain biking in the UK.

Gorebridge Railway Station 7 miles, Stow Railway Station 9 miles and Edinburgh City Bypass 11 miles (all distances are approximate).

Heriot has very much a community feeling, and the primary school and other local improvements have been funded by the Wind Farms as well as estate owners donating to the local school and community as a whole. The local primary school is well thought of and has an after-school club for working parents with pick up at 18.00hrs.



Gamekeepers Cottage

This lovely two bedroom cottage has an abundance of character and ample potential expansion opportunity.

The dining area offers a comfortable dining space for a large table and multiple chairs, this room further benefits from the original floorboards. The kitchen character is very in-keeping with the period of the property, with a Dublin sink and a Rangemaster Cooker which has a gas hob installed to LPG which helps keep this room lovely and cosy. Further integrated appliances include; Bosch

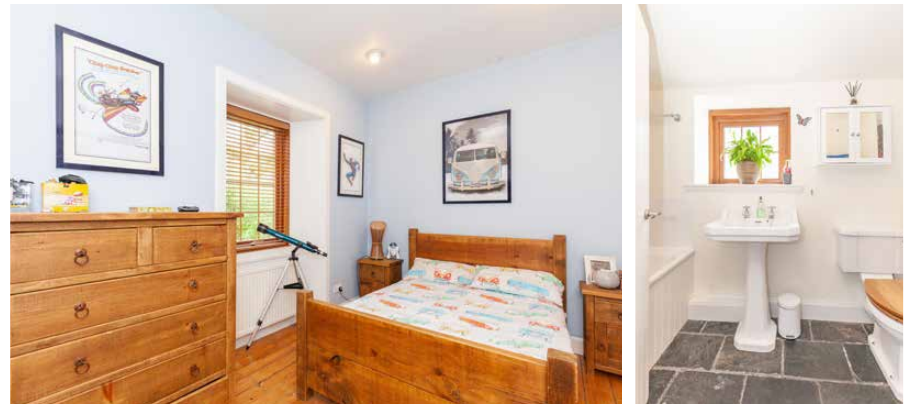
Dishwasher, Washing Machine and Separate Tumble Dryer and Samsung Fridge/Freezer. The living room is bright and airy with built-in shelving and a feature fireplace. The original floorboards continue through to this room. This room also offers good storage.

There are two good sized double bedrooms one of which overlooks the front driveway while the other overlooks the rear garden. The family bathroom has a three piece suite with shower over the bath. Further to this, there is the

option of a study/nursery off the master bedroom which further allows access to a separate walk-in wardrobe.

The rear garden is a fantastic size and has stunning views across the countryside, it further benefits from two external storage areas and a garden shed. The driveway provides comfortable parking for two cars. The cottage is also fully double glazed throughout, benefits from an attic for storage and has Oil Central Heating. The cottage also comes with Architectural drawings to extend the property.





Approximate Dimensions (Taken from the widest point)

Lounge	5.04m (16'7") x 4.41m (14'6")
Kitchen	4.40m (14'5") x 2.36m (7'9")
Bedroom 1	4.17m (13'8") x 3.27m (10'9")
Bedroom 2	4.74m (15'7") x 2.94m (9'8")
Bedroom 3	3.25m (10'8") x 2.30m (7'7")
Bathroom	2.61m (8'7") x 1.44m (4'9")
Walk in Wardrobe	3.00m (9'10") x 2.00m (6'7")

Gross internal floor area (m²): 91m² | EPC Rating: F

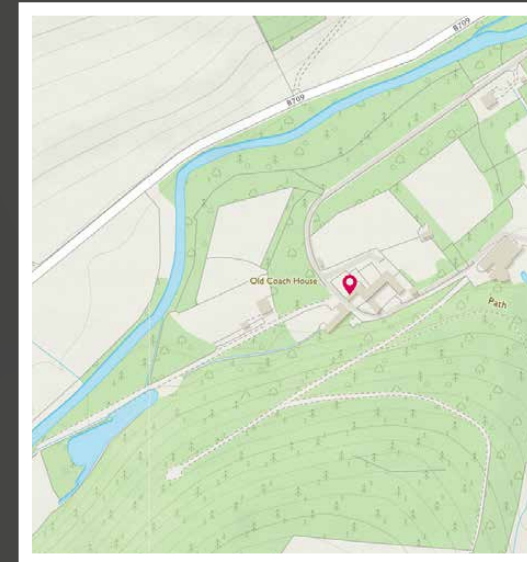


Image credit: <https://www.ordnancesurvey.co.uk/osmaps/>





McEwan Fraser Legal

Solicitors & Estate Agents

Tel. 01896 800 440
www.mcewanfraserlegal.co.uk
info@mcewanfraserlegal.co.uk

Part
Exchange
Available

Disclaimer: The copyright for all photographs, floorplans, graphics, written copy and images belongs to McEwan Fraser Legal and use by others or transfer to third parties is forbidden without our express consent in writing. Prospective purchasers are advised to have their interest noted through their solicitor as soon as possible in order that they may be informed in the event of an early closing date being set for the receipt of offers. These particulars do not form part of any offer and all statements and photographs contained herein are for illustrative purposes and are not guaranteed or warranted. Buyers must satisfy themselves for the accuracy and authenticity of the brochure and should always visit the property to satisfy themselves of the property's suitability and obtain in writing via their solicitor what's included with the property including any land. The dimensions provided may include, or exclude, recesses intrusions and fitted furniture. Any measurements provided are for guide purposes only and have been taken by electronic device at the widest point. Any reference to alterations to, or use of, any part of the property does not mean that any necessary planning, building regulations or other consent has been obtained. A buyer must find out by inspection or in other ways that all information is correct. None of the appliances/services stated or shown in this brochure have been tested by ourselves and none are warranted by our seller or MFL.



Text and description
JUDY SHIELDS
 Surveyor



Professional photography
ROSS MCBRIDE
 Photographer



Layout graphics and design
ALAN SUTHERLAND
 Designer