



  
**McEwan Fraser Legal**

Solicitors & Estate Agents

01463 211 116

**9 Ose**

STRUAN, ISLE OF SKYE, IV56 8FJ





## 9 OSE

STRUAN, ISLE OF SKYE

Ose is located 3 miles NW of Struan, a small village (population 300), situated on the west coast of the Isle of Skye, on the shores of Loch Caroy, itself an inlet of Loch Bracadale and enjoys spectacular views over the loch to the hills beyond. Struan has its own primary school with senior pupils attending Portree High School.

The property is also an eleven-minute drive (6 miles) from the village of Dunvegan, which sits on the shores of Loch Dunvegan in the north-west of Skye and has many famous attractions including Dunvegan Castle, MacLeod's Maidens and MacLeod's Tables on the south side of the loch. Many lovely woodland walks are found in the area and the nearby Coral Beaches are one of Skye's hidden gems. These numerous beauty spots and well-known attractions generate excellent footfall throughout the year from both tourists and the ever-expanding local community.

A mile north of Dunvegan lies the woodland surrounding Dunvegan Castle, the home of Clan MacLeod and one of Skye's largest tourist attractions. Other attractions in the north-west of Skye include Neist Point, the Fairy Bridge and the remains of Trumpan churchyard.



# 9 OSE

STRUAN, ISLE OF SKYE

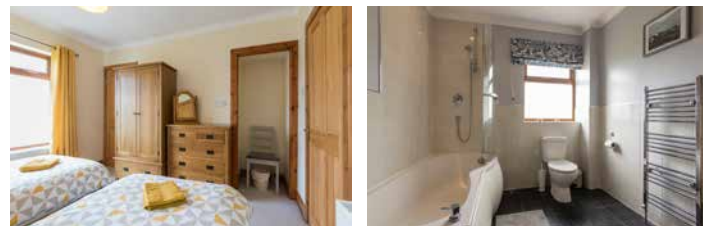
McEwan Fraser Legal are delighted to offer a wonderful opportunity to purchase this attractive traditional three-bedroom detached bungalow, situated in a 1/4 acre grounds, in a small coastal settlement close to Loch Bracadale with outstanding views towards MacLeod's Tables. The property is being run as a holiday let and has been maintained to a very high standard. Equally, it would provide a very comfortable and modern living environment for a family with scope for development.

The accommodation is over two levels and consists of an entrance hall, bright dual-aspect lounge with log-burning stove, modern kitchen/diner with ample quality fitted units & cupboards, three spacious bedrooms of which the master bedroom fills the entire upper floor complete with en-suite. A large comfortable family bathroom with basin and toilet completes the accommodation.

The property sits in enclosed and generous garden grounds with a driveway. There is a sizeable workshop/store. The property also benefits from oil heating and double glazing. This is a rare opportunity to acquire a "walk-in condition" family home or business with stunning island views.

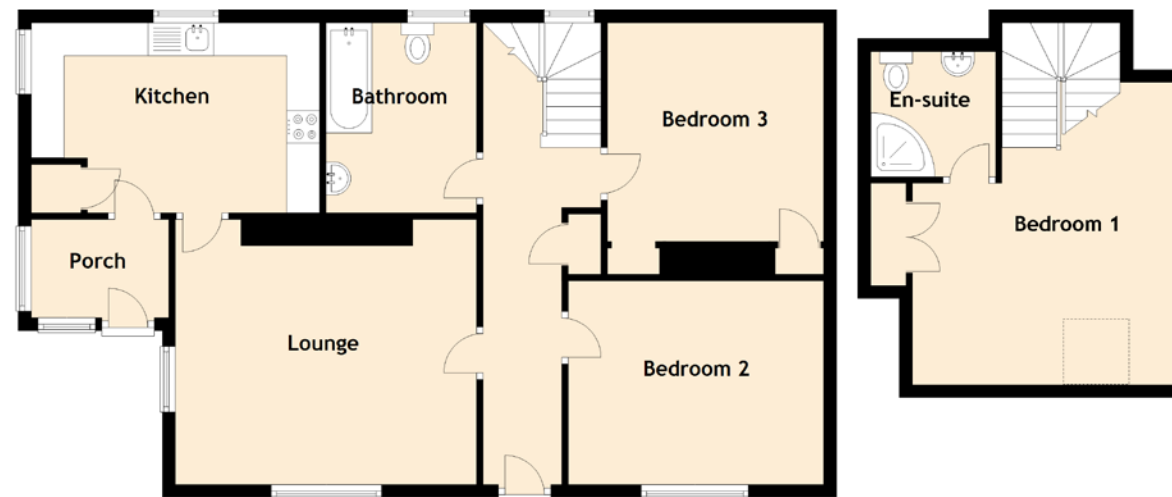






# SPECIFICATIONS

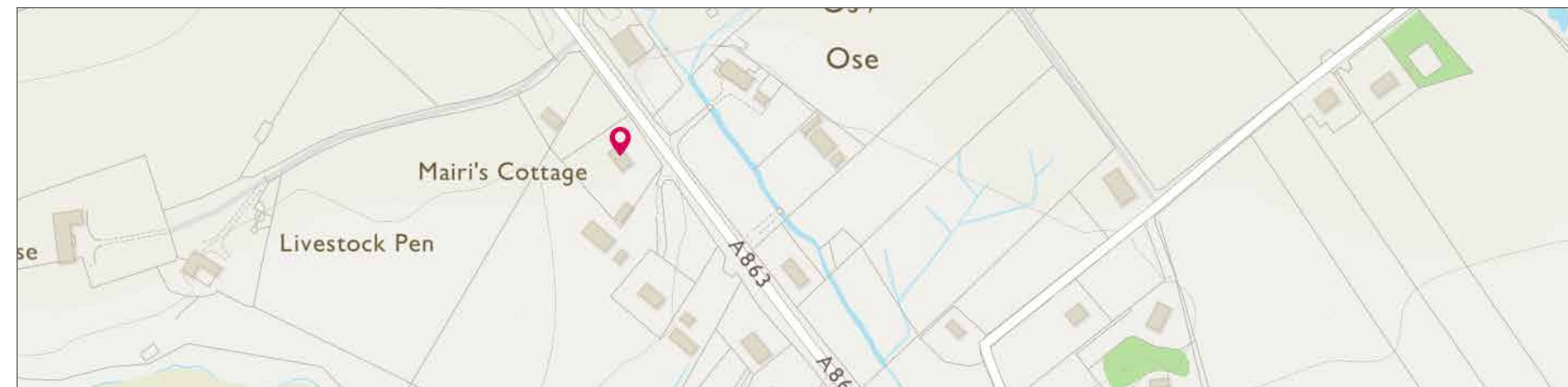
FLOOR PLAN, DIMENSIONS & MAP



Approximate Dimensions  
(Taken from the widest point)

Lounge	4.60m (15'1") x 3.50m (11'6")
Kitchen	4.40m (14'5") x 2.90m (9'6")
Bedroom 1	4.60m (15'1") x 4.10m (13'5")
Bedroom 2	3.90m (12'10") x 3.10m (10'2")
Bedroom 3	3.30m (10'10") x 3.30m (10'10")
Bathroom	2.80m (9'2") x 2.30m (7'7")
En-suite	1.90m (6'3") x 1.90m (6'3")

Gross internal floor area (m<sup>2</sup>): 105m<sup>2</sup>  
EPC Rating: E







## VIEWS FROM THE PROPERTY



  
**McEwan Fraser Legal**  
Solicitors & Estate Agents

Tel. 01463 211 116  
[www.mcewanfraserlegal.co.uk](http://www.mcewanfraserlegal.co.uk)  
[info@mcewanfraserlegal.co.uk](mailto:info@mcewanfraserlegal.co.uk)

Part  
Exchange  
Available

**Disclaimer:** The copyright for all photographs, floorplans, graphics, written copy and images belongs to McEwan Fraser Legal and use by others or transfer to third parties is forbidden without our express consent in writing. Prospective purchasers are advised to have their interest noted through their solicitor as soon as possible in order that they may be informed in the event of an early closing date being set for the receipt of offers. These particulars do not form part of any offer and all statements and photographs contained herein are for illustrative purposes and are not guaranteed or warranted. Buyers must satisfy themselves for the accuracy and authenticity of the brochure and should always visit the property to satisfy themselves of the property's suitability and obtain in writing via their solicitor what's included with the property including any land. The dimensions provided may include, or exclude, recesses intrusions and fitted furniture. Any measurements provided are for guide purposes only and have been taken by electronic device at the widest point. Any reference to alterations to, or use of, any part of the property does not mean that any necessary planning, building regulations or other consent has been obtained. A buyer must find out by inspection or in other ways that all information is correct. None of the appliances/services stated or shown in this brochure have been tested by ourselves and none are warranted by our seller or MFL.



Professional photography  
**SCOTT MARSHALL**  
Photographer



Layout graphics and design  
**ALAN SUTHERLAND**  
Designer