

Redcastle Cottage

HAUGH OF URR, CASTLE DOUGLAS, DG7 3LB



*A CHARMING FOUR-BED FAMILY COTTAGE SET IN
A STUNNING LOCATION,*



0131 524 9797



www.mcewanfraserlegal.co.uk



info@mcewanfraserlegal.co.uk





McEwan Fraser Legal are delighted to offer to the market 'Redcastle Cottage'. This charming four-bed detached cottage is set within spacious gardens with breathtaking views of the surrounding countryside. Lovingly restored from a former 'Cow shed' and upgraded to a great standard, the property can only be described as a captivating home in an exceptional location.

This is the 'someday' type of home many people dream of owning, and the peaceful landscaped gardens that surround the property offer the perfect spot to relax and take things a little slower for once. The property oozes timeless period charm and due to the many upgrades lavished upon it, now offers a home that is not only extremely comfortable but very relaxing too.

Redcastle Cottage



The accommodation comprises a very bright and comfortable lounge containing a log burner, with period detailing throughout and generous dimensions which offer a plethora of furniture configuration options. French doors lead out nicely to the extensive and tranquil garden area.



The farmhouse-style kitchen is a great size and easily holds a large dining table, along with a gas hob, electric oven, log burner and plenty of space for other appliances as required. It's a great space for any chef to serve up a marvelous meal.







There are four bedrooms in this home, all bright with ample space for free-standing furniture and storage. The shower room is a generous size and contains a mains-powered standalone shower enclosure, ensuring an endless supply of hot water.

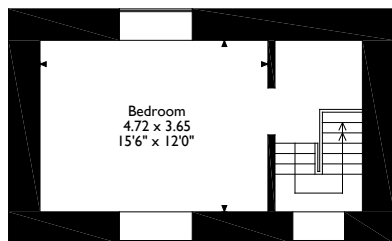




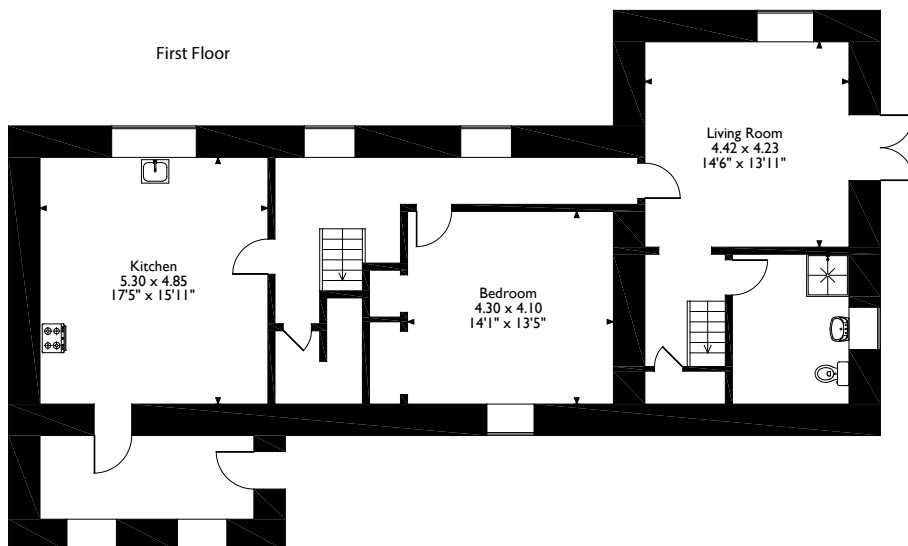
The Bedrooms



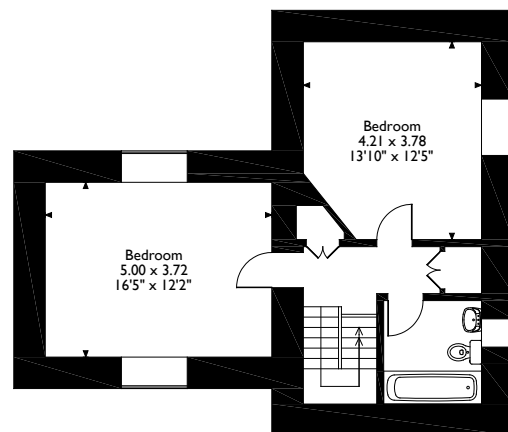




First Floor



Ground Floor



First Floor

Gross internal floor area (m²): 173m²

EPC Rating: D

Floor Plan



Central heating and double-glazing along with the log burners help keep the home warm, comfortable and energy-efficient. The driveway can cater for many vehicles. The cottage grounds have a development opportunity with room for holiday pods etc, served by a separate entrance/drive.

The outside space of this home also adds so much lifestyle value for the new owners. The garden is sizeable and beautifully landscaped, from the sun patio to the stone-built outhouse it all offers so much for those who love to be close to nature or to tinker.

Some properties tick many boxes, rarely, however, do we come across a property that seems to tick all the boxes. If you are searching for attributes like authentic period design, with spacious and flexible accommodation, set in a quaint friendly village, stunning setting and an all-around great family home, then this is it. Here's the chance to change to an altogether more relaxed pace of life or to start a holiday let business. Early viewing is recommended.





Redcastle Cottage, Haugh Of Urr, is a great place to live. The village of Haugh of Urr has a popular and award winning pub, serving excellent food receiving wonderful reviews on numerous sites. The nearest town is Dalbeattie with shops and schools, and is 3 miles away.

Set not far from the market town of Castle Douglas (4.8 miles) which is known as Scotland's Food Town and has many local family run shops and high quality businesses providing a varied selection of services. There are both primary and secondary schools in the town, along with supermarkets, health services, a golf course, veterinary services and a thriving livestock market.



The surrounding area is steeped in natural beauty with stunning beaches and villages found in nearby Rockcliffe, Sandyhills, & Castle Point and the gorgeous and popular harbour/sailing village of Kipford, which also benefits from a fantastic golf course.

The stunning Solway Coast offers many beautiful walks and drives, making it popular with locals and visitors alike.

The Location



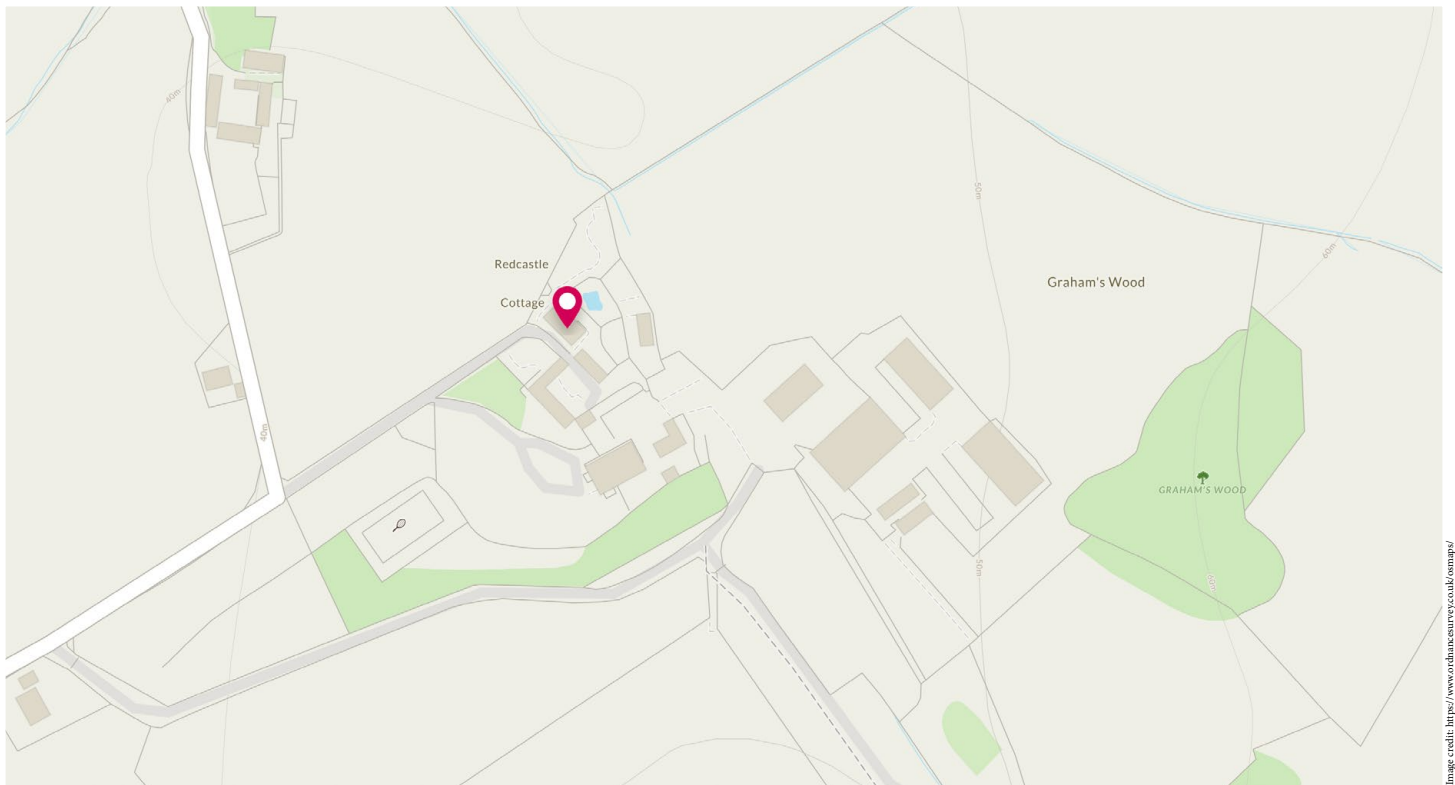
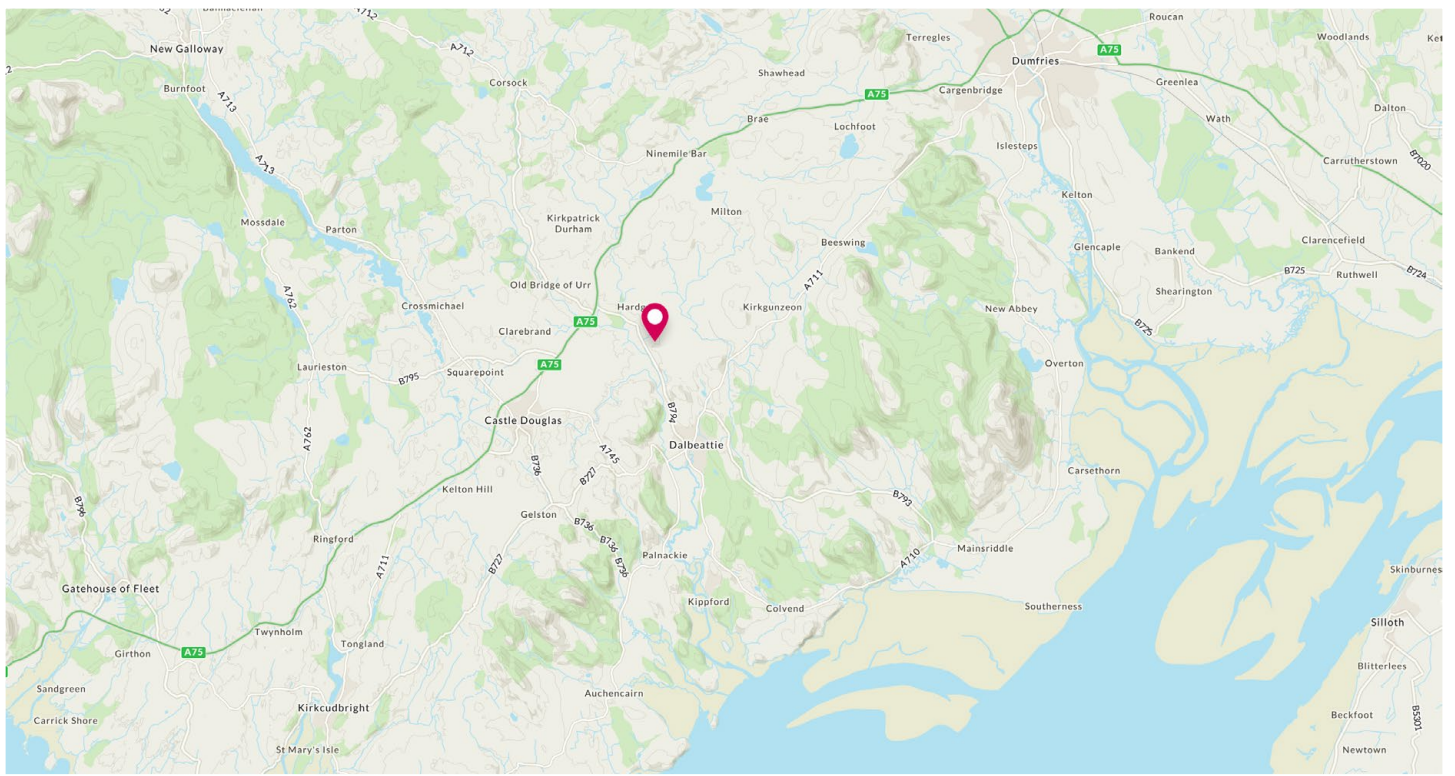


Image credit: <https://www.ordnancesurvey.co.uk/osmap/>

McEwan Fraser Legal

Solicitors & Estate Agents

Tel. 0131 524 9797

www.mcewanfraserlegal.co.uk

info@mcewanfraserlegal.co.uk

**Part
Exchange
Available**



Text and description
KEN MEISAK
Area Sales Manager



Layout graphics and design
ALAN SUTHERLAND
Designer

Disclaimer: The copyright for all photographs, floorplans, graphics, written copy and images belongs to McEwan Fraser Legal and use by others or transfer to third parties is forbidden without our express consent in writing. Prospective purchasers are advised to have their interest noted through their solicitor as soon as possible in order that they may be informed in the event of an early closing date being set for the receipt of offers. These particulars do not form part of any offer and all statements and photographs contained herein are for illustrative purposes and are not guaranteed or warranted. Buyers must satisfy themselves for the accuracy and authenticity of the brochure and should always visit the property to satisfy themselves of the property's suitability and obtain in writing from their solicitor what's included with the property including any land. The dimensions provided may include, or exclude, recesses intrusions and fitted furniture. Any measurements provided are for guide purposes only and have been taken by electronic device at the widest point. Any reference to alterations to, or use of, any part of the property does not mean that any necessary planning, building regulations or other consent has been obtained. A buyer must find out by inspection or in other ways that all information is correct. None of the appliances/services stated or shown in this brochure have been tested by ourselves and none are warranted by our seller or MFL.