

10 5/2, Castlebank Drive

GLASGOW HARBOUR, GLASGOW, G11 6AD



A perfectly positioned two-bedroom apartment, spectacular views over the banks of the Clyde, spacious accommodation, offering luxury waterfront living



0141 404 5474



www.mcewanfraserlegal.co.uk



info@mcewanfraserlegal.co.uk



This two-bedroom fifth-floor apartment has been meticulously designed to create a spacious, low-maintenance, design-led property that oozes modern urban living. Inside, the extensive use of floor-to-ceiling glazing and the open living space makes the most of the natural light reflecting off the river. The apartment has a very bright and airy feel, with spectacular views of the West End and southside of the city, as well as the impressive banks of the Clyde.

THE LOUNGE /KITCHEN/DINER



This is the perfect apartment for entertaining; the open-plan kitchen extends into the twin-aspect living space, ensuring that the chef is never far away from the party. The kitchen has a gas hob, electric oven, extractor hood, fridge freezer and dishwasher, ensuring it's equipped for convenience and functionality.



The extensive glazing in this zone makes the most of the natural light to create a modern and contemporary ambience. Spectacular views of the Clyde are available from this room, and there is ample space for a dining table and chairs for more informal dining with friends and family. For added convenience, the property has a utility room to cater for laundry requirements.





There are two bedrooms in this apartment, both contain fitted wardrobes and both are bright and welcoming. The master bedroom benefits from an en-suite shower room. The main bathroom contains a white suite including a bath.

The apartment is serviced by gas central heating, high-speed broadband, satellite TV and aerial sockets. Residents can also enjoy peace of mind with a door entry handset. Storage is a necessity in modern living, and the apartment has generous integral storage in the master bedroom as well as the hallway, which also contains plumbing and drainage for a washing machine, making the very best of available space.

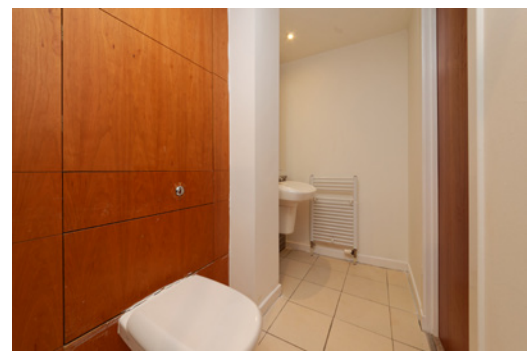
THE BATHROOM



BEDROOM 1



The master bedroom benefits from an en-suite shower room



BEDROOM 2



EXTERNALS

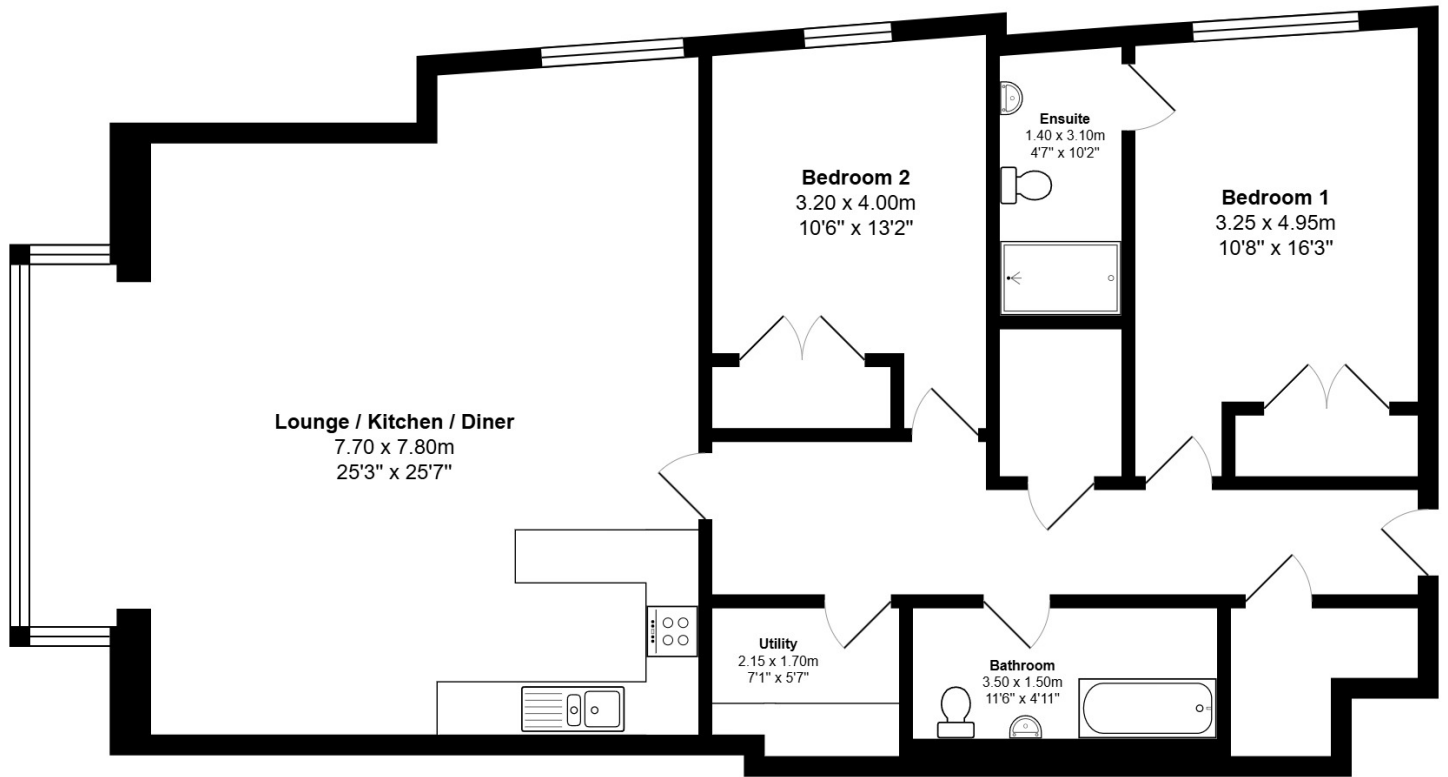


Lifestyle is highly regarded within the development, which features modern landscaped gardens. The tranquil communal gardens, on the banks of the Clyde, feature contemporary planters, providing residents with a peaceful sanctuary to appreciate all that waterside living has to offer.

A parking space is provided in the secure underground car parking area.

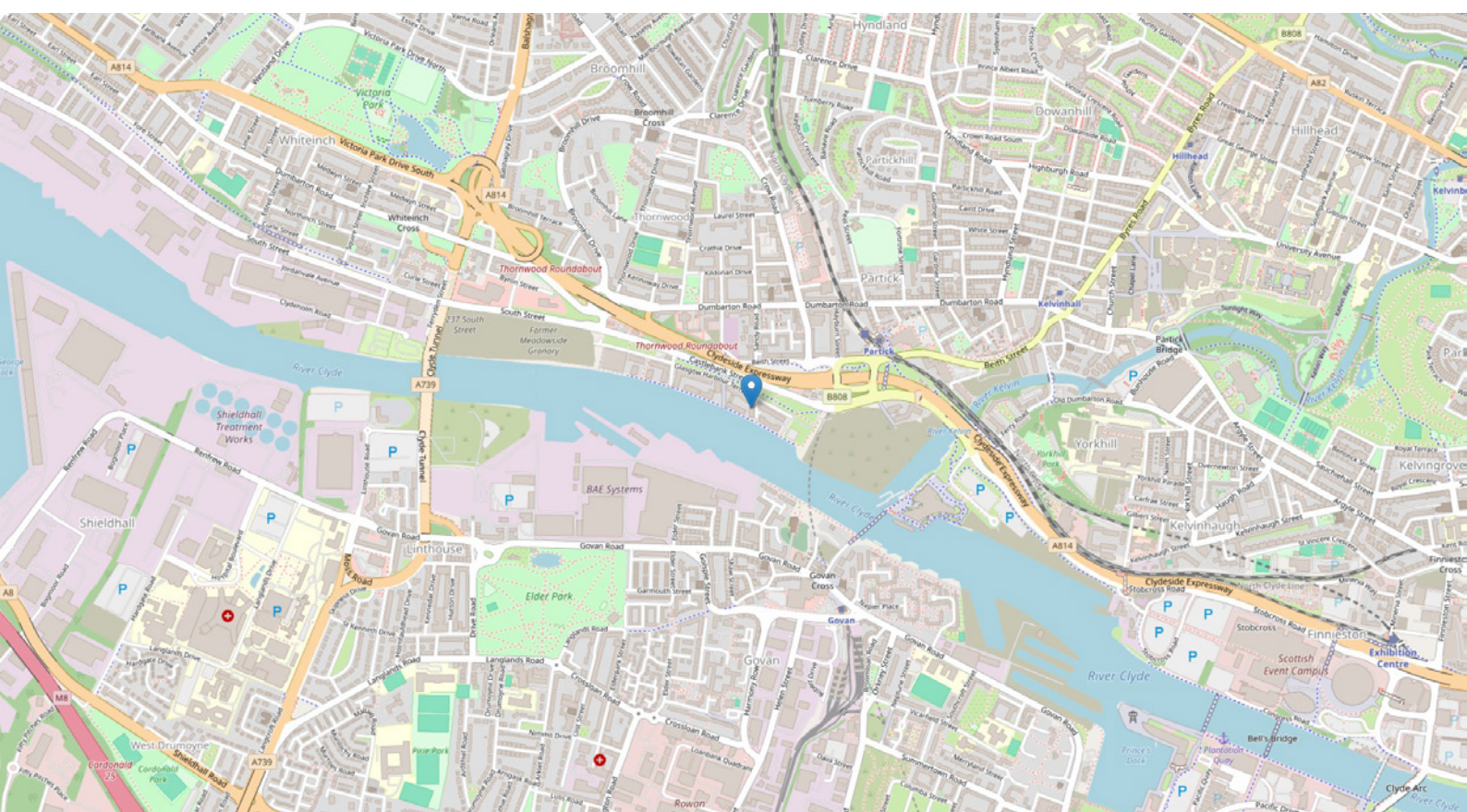
Early viewing is advised.

FLOOR PLAN & DIMENSIONS



Approximate Dimensions (Taken from the widest point)

Gross internal floor area (m²): 107m² | EPC Rating: B



THE LOCATION

Situated on the river's north bank, between the bustling city centre and the culture-steeped west end, is the city's most desirable residential address, Castlebank Place, perfectly positioned to capture the essence of contemporary city living, together with the tranquillity of a waterfront location. The apartment is a unique opportunity in modern waterfront living. The enviable position allows all residents to recline in the surroundings of the waterfront and take advantage of the tranquil setting, yet the city centre and the fashionable West End are both within very easy reach. The train, subway and bus services are accessible from Partick Interchange, just a short stroll from the development. There is also greatly improved pedestrian access into the heart of the city centre, including a riverside walkway.





Glasgow has undergone a striking transformation in recent years and now boasts the UK's premier retail offering outside of London. With an abundance of the coolest bars, fine dining restaurants, a bustling café culture and diverse nightlife, all within ten minutes of your city oasis. The west end, with its leafy cobbled lanes lined with bars and bespoke boutiques, is within walking distance. This historic place, created in the late 1800s, boasts the beautiful Botanic Gardens, giving Glasgow a vibrancy of its own. The Transport Museum is within a very short walk.

As far as luxury waterfront living goes, there is no greater statement of contemporary urban chic than Castlebank Place at Glasgow Harbour.



McEwan Fraser Legal

Solicitors & Estate Agents

Tel. 0141 404 5474

www.mcewanfraserlegal.co.uk

info@mcewanfraserlegal.co.uk

Part
Exchange
Available



Text and description
KEN MEISAK
Area Sales Manager



Professional photography
CRAIG DEMPSTER
Photographer



Layout graphics and design
ALLY CLARK
Designer

Disclaimer: The copyright for all photographs, floorplans, graphics, written copy and images belongs to McEwan Fraser Legal and use by others or transfer to third parties is forbidden without our express consent in writing. Prospective purchasers are advised to have their interest noted through their solicitor as soon as possible in order that they may be informed in the event of an early closing date being set for the receipt of offers. These particulars do not form part of any offer and all statements and photographs contained herein are for illustrative purposes and are not guaranteed or warranted. Buyers must satisfy themselves for the accuracy and authenticity of the brochure and should always visit the property to satisfy themselves of the property's suitability and obtain in writing via their solicitor what's included with the property including any land. The dimensions provided may include, or exclude, recesses intrusions and fitted furniture. Any measurements provided are for guide purposes only and have been taken by electronic device at the widest point. Any reference to alterations to, or use of, any part of the property does not mean that any necessary planning, building regulations or other consent has been obtained. A buyer must find out by inspection or in other ways that all information is correct. None of the appliances/services stated or shown in this brochure have been tested by ourselves and none are warranted by our seller or MFL.