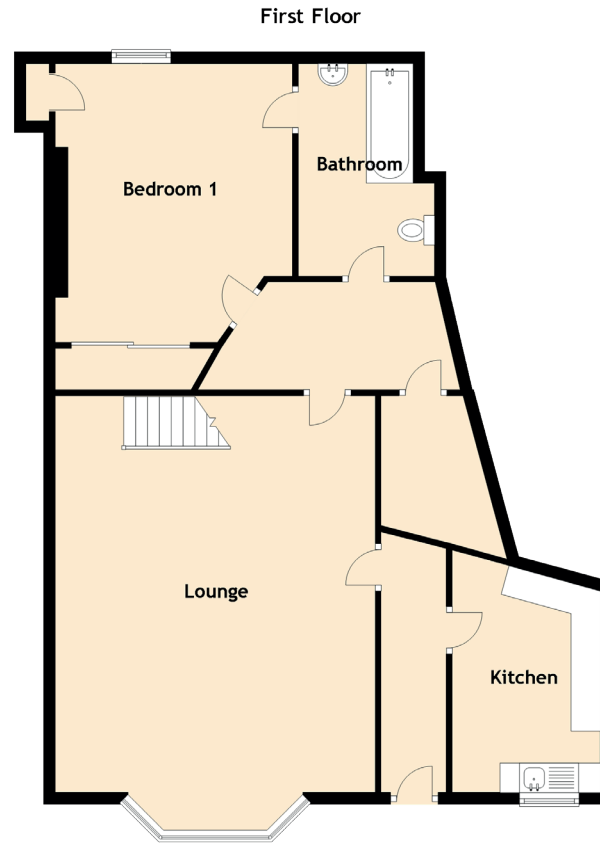
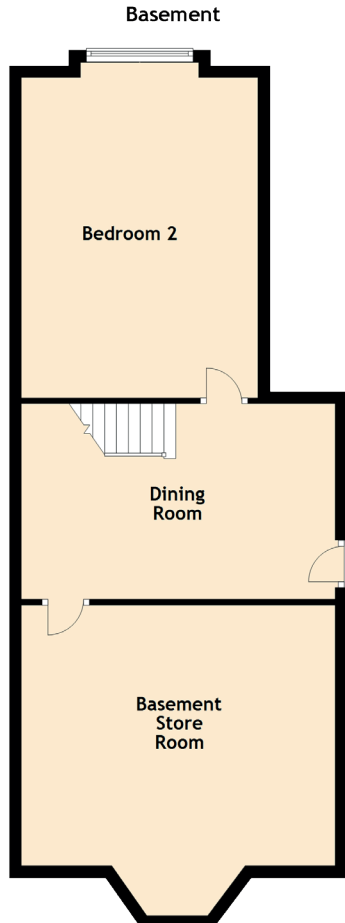


# 15A Rosslyn Terrace

HYNDLAND, GLASGOW, G12 9NA



Approximate Dimensions (Taken from the widest point)

## Basement

Bedroom 2	5.40m (17'9") x 4.00m (13'1")
Dining Room	5.30m (17'5") x 3.30m (10'10")
Basement Store Room	5.30m (17'5") x 4.40m (14'5")

## First Floor

Lounge	6.70m (22') x 5.40m (17'9")
Kitchen	4.14m (13'7") x 3.40m (11'2")
Bedroom 1	4.00m (13'1") x 0.49m (1'7")
Bathroom	3.58m (11'9") x 3.20m (10'6")