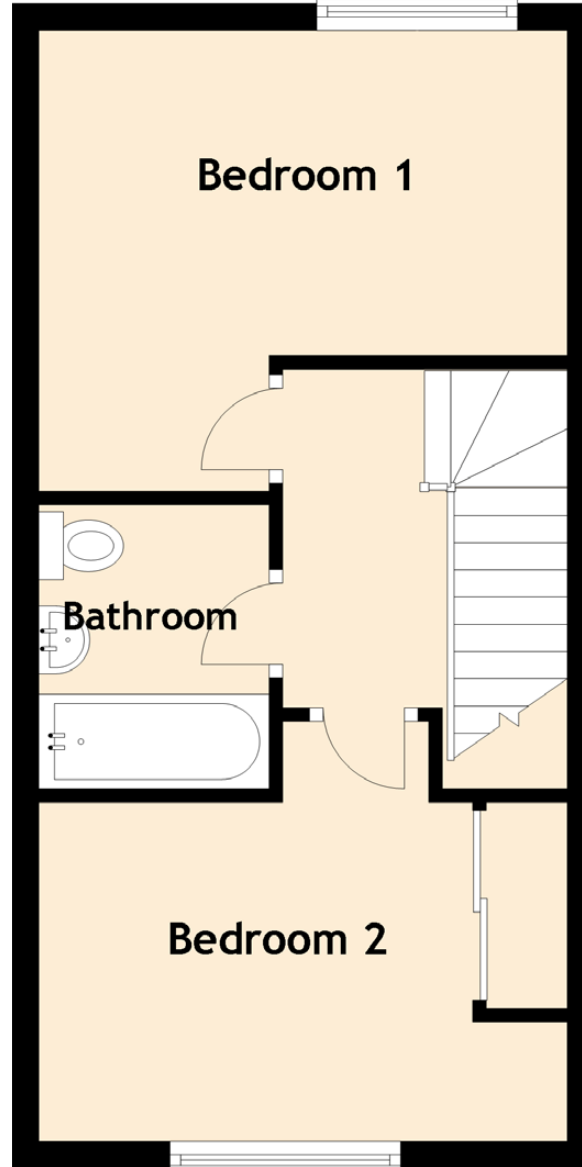
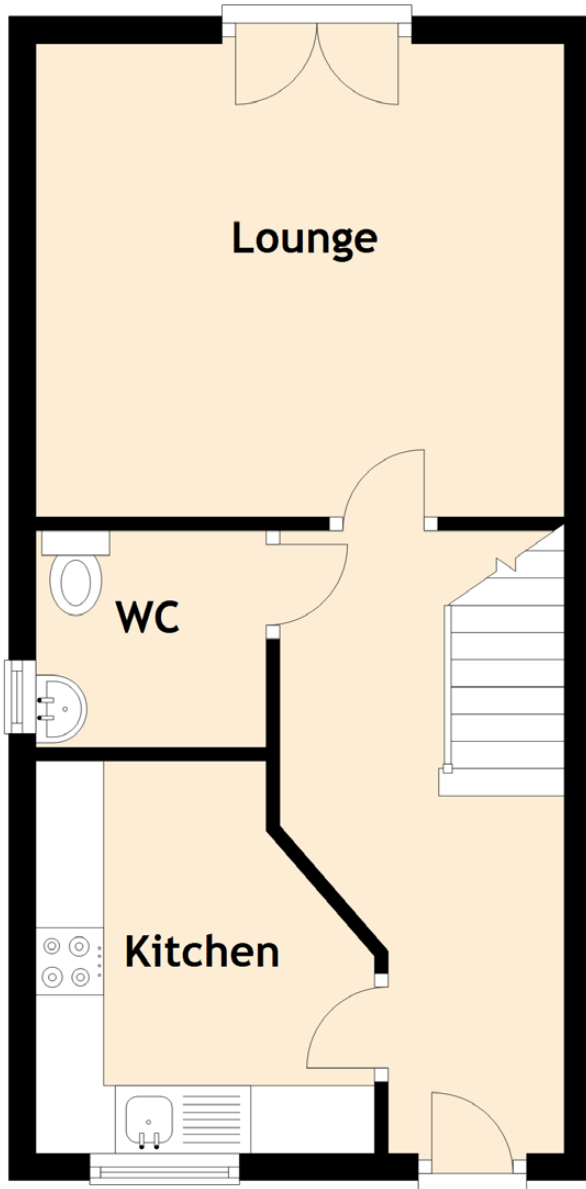


# 55 Provost Milne Gardens



Approximate Dimensions  
(Taken from the widest point)

Lounge	3.90m (12'10") x 3.50m (11'6")
Kitchen	2.90m (9'6") x 2.50m (8'2")
Bedroom 1	3.90m (12'10") x 3.40m (11'2")
Bedroom 2	3.90m (12'10") x 2.50m (8'2")
Bathroom	2.10m (6'11") x 1.70m (5'7")
WC	1.70m (5'7") x 1.60m (5'3")

Gross internal floor area (m<sup>2</sup>): 66m<sup>2</sup>

EPC Rating: C