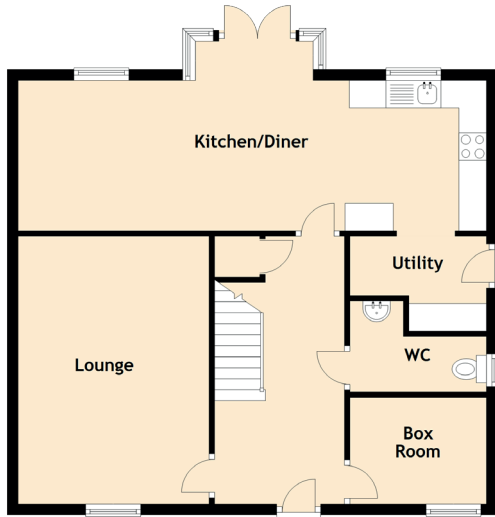


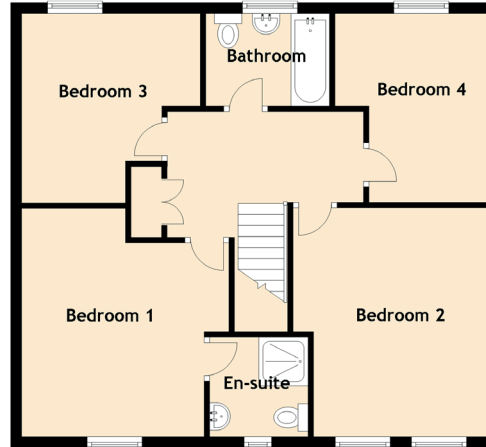
42 Lang Drive

BATHGATE, WEST LoTHIAN, EH48 2JZ

Ground Floor



First Floor



Approximate Dimensions (Taken from the widest point)

Ground Floor

Lounge	4.86m (15'11") x 3.47m (11'5")
Kitchen/Diner	8.51m (27'11") x 2.73m (8'11")
Utility	2.48m (8'2") x 1.72m (5'8")
Box Room	2.47m (8'1") x 1.76m (5'9")
WC	2.48m (8'2") x 1.43m (4'8")

First Floor

Bedroom 1	4.15m (13'7") x 3.77m (12'4")
En-suite	1.79m (5'10") x 1.77m (5'10")
Bedroom 2	4.16m (13'8") x 3.54m (11'7")
Bedroom 3	3.44m (11'3") x 3.25m (10'8")
Bedroom 4	3.07m (10'1") x 2.81m (9'3")
Bathroom	2.25m (7'5") x 1.68m (5'6")