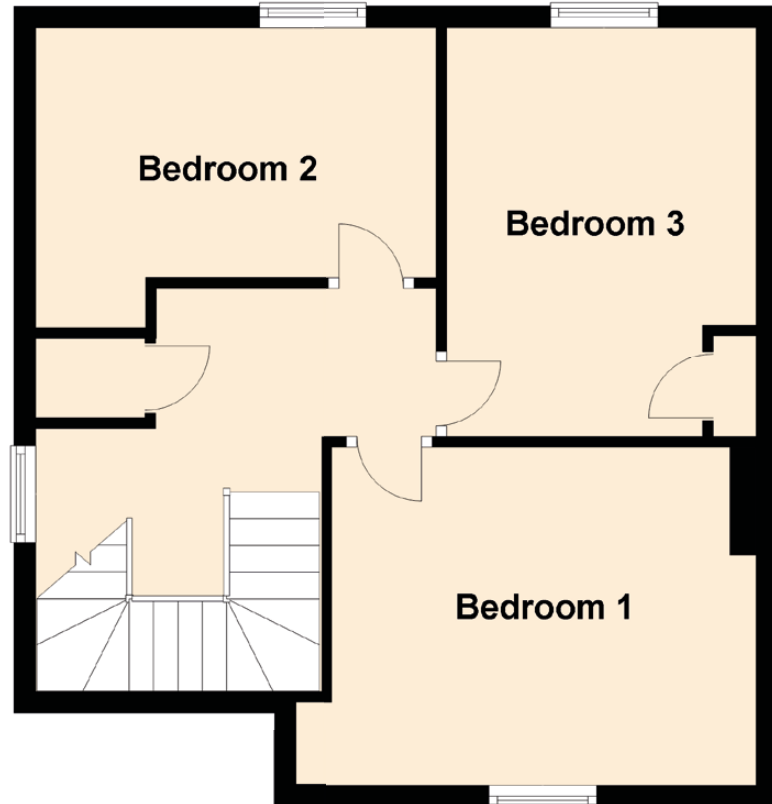
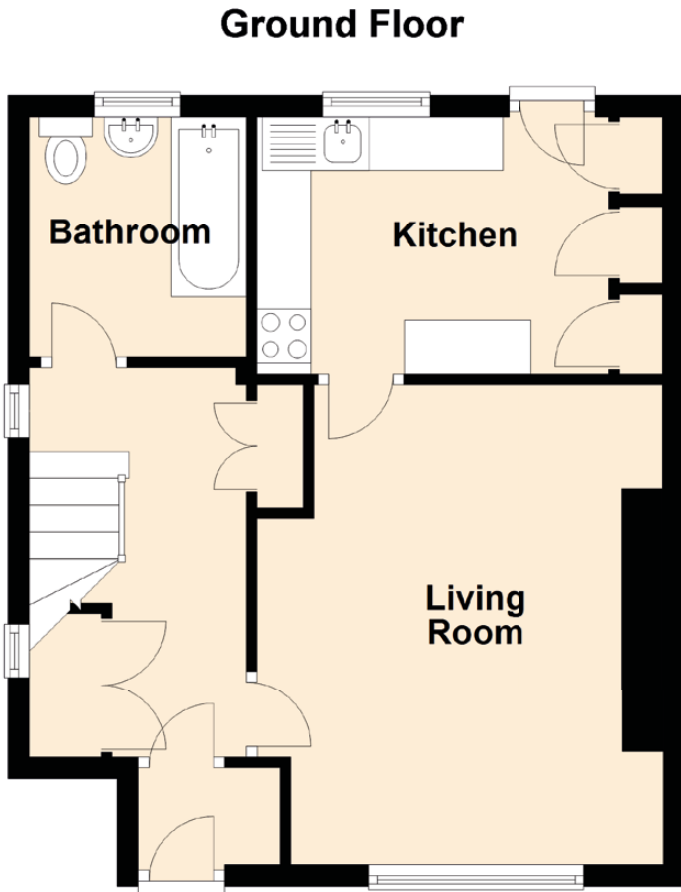


# 2A Ashdale Road

KILMARNOCK, EAST AYRSHIRE, KA3 1PS

## First Floor



Approximate Dimensions (Taken from the widest point)

Living Room  
Kitchen  
Bathroom

### Ground Floor

4.47m (14'8") x 3.94m (12'11")  
3.78m (12'5") x 2.40m (7'10")  
2.24m (7'4") x 2.02m (6'8")

Bedroom 1  
Bedroom 2  
Bedroom 3

### First Floor

3.95m (13') x 3.14m (10'4")  
3.73m (12'3") x 2.70m (8'10")  
3.81m (12'6") x 2.88m (9'5")

Gross internal floor area (m<sup>2</sup>): 92m<sup>2</sup>