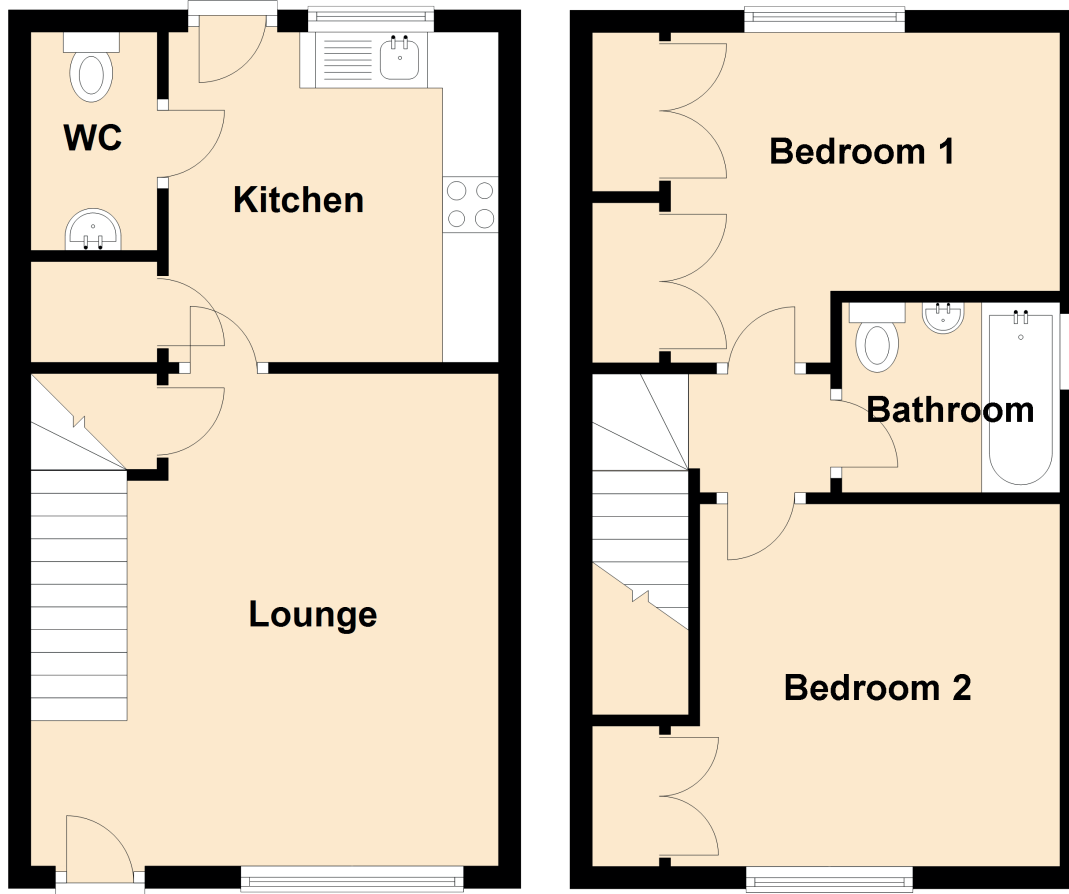


# 12 Devonvale Place

KINROSS, PERTHSHIRE, KY13 8FR



Approximate Dimensions (Taken from the widest point)

Lounge	4.40m (14'5") x 4.18m (13'9")
Kitchen	2.95m (9'8") x 2.95m (9'8")
WC	1.95m (6'5") x 1.15m (3'9")
Bedroom 2	3.48m (11'5") x 3.24m (10'8")
Bathroom	1.95m (6'5") x 1.70m (5'7")
Bedroom 1	3.48m (11'5") x 2.95m (9'8")