

58 Bogie Street

Approximate Dimensions (Taken from the widest point)

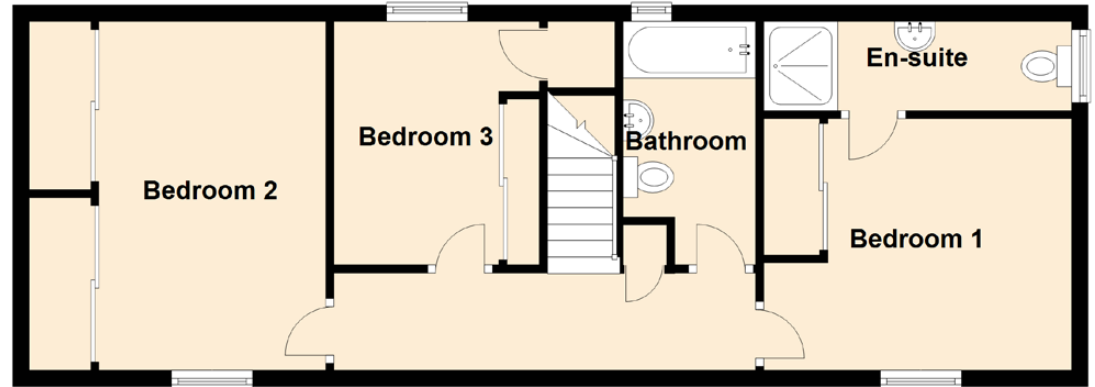
Ground Floor

Bedroom 1 3.90m (12'10") x 3.20m (10'6")
En-suite 3.80m (12'6") x 1.10m (3'7")
Bedroom 2 4.30m (14'1") x 2.80m (9'2")
Bedroom 3 3.30m (10'10") x 3.00m (9'10")
Bathroom 3.10m (10'2") x 1.80m (5'11")

First Floor

Lounge/Kitchen 13.70m (44'11") x 4.50m (14'9")
Utility 2.30m (7'7") x 1.60m (5'3")
WC 2.20m (7'3") x 1.40m (4'7")

Ground Floor



First Floor

