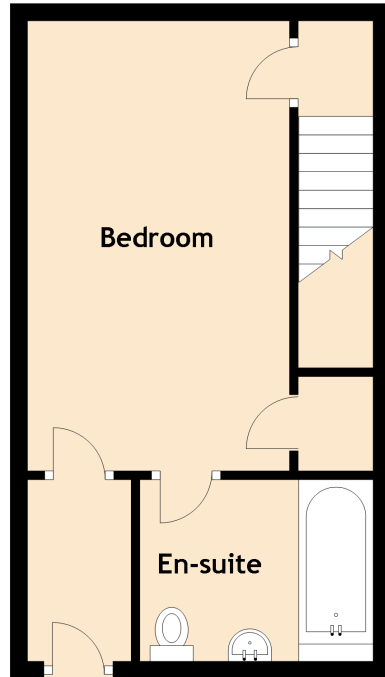
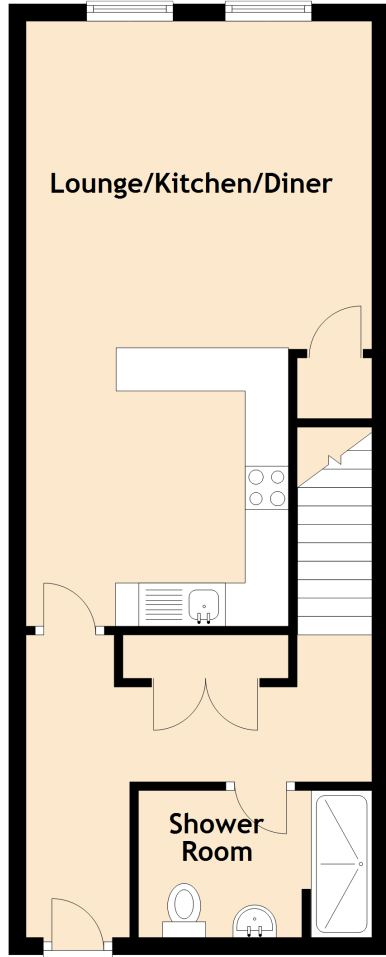


# 2/3 The Angel Building

69 KENT ROAD, CHARING CROSS, GLASGOW, G3 7EG



Approximate Dimensions  
(Taken from the widest point)

## Lower Level

Lounge/Kitchen/Diner	7.00m (23') x 4.00m (13'1")
Shower Room	2.70m (8'10") x 1.70m (5'7")

## Mezzanine Level

Bedroom	5.20m (17'1") x 3.10m (10'2")
En-suite	2.70m (8'10") x 2.10m (6'11")