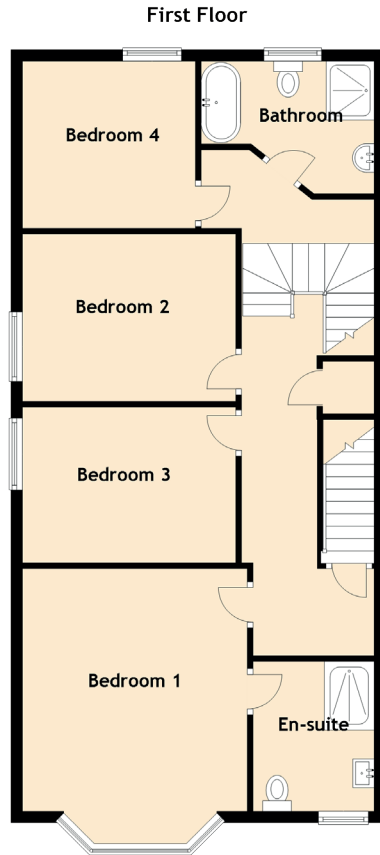
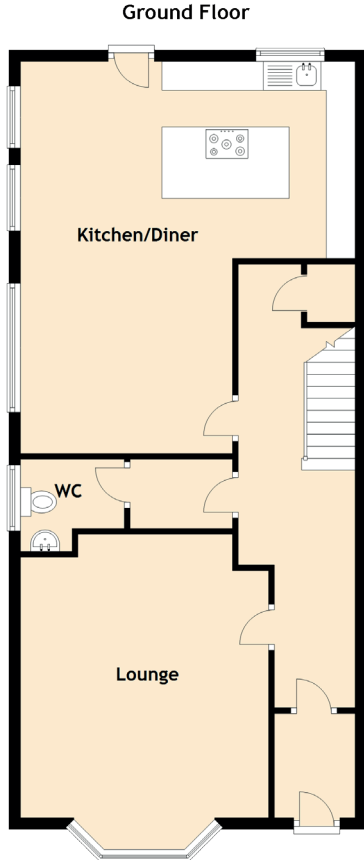


22 Viewfield Terrace

DUNFERMLINE, KY12 7HZ



Approximate Dimensions (Taken from the widest point)

Ground Floor

Lounge	4.92m (16'2") x 4.30m (14'1")
Kitchen/Diner	6.80m (22'4") x 5.80m (19')
WC	1.80m (5'11") x 1.20m (3'11")

First Floor

Bedroom 1	5.30m (17'5") x 3.90m (12'10")
En-suite	2.60m (8'6") x 2.10m (6'11")
Bedroom 2	3.70m (12'2") x 2.90m (9'6")
Bedroom 3	3.70m (12'2") x 2.70m (8'10")
Bedroom 4	3.00m (9'10") x 2.90m (9'6")
Bathroom	3.00m (9'10") x 2.00m (6'7")

Second Floor

Attic 1	3.50m (11'6") x 2.90m (9'6")
Attic 2	2.30m (7'7") x 2.30m (7'7")