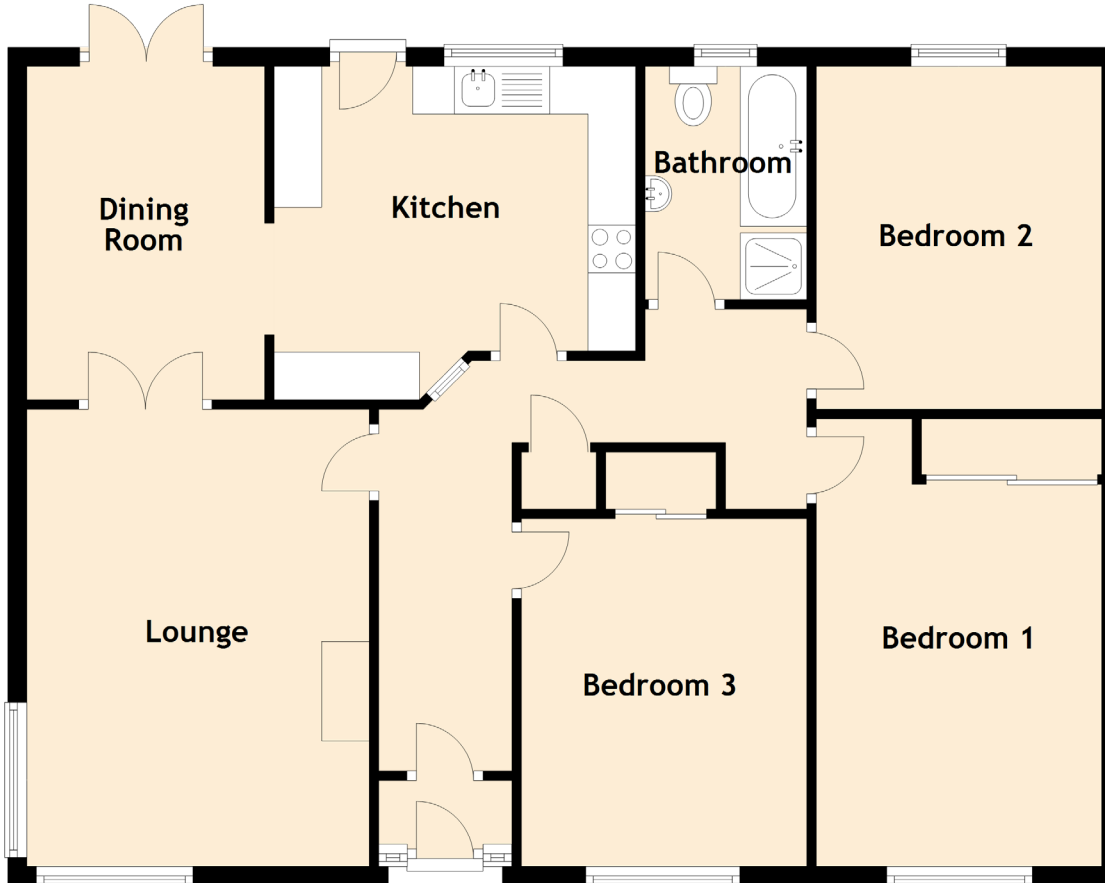


# SPECIFICATIONS & DETAILS

## FLOOR PLAN, DIMENSIONS & MAP



### Approximate Dimensions (Taken from the widest point)

Lounge	4.80m (15'9") x 3.60m (11'10")
Kitchen	3.80m (12'6") x 3.50m (11'6")
Dining Room	3.50m (11'6") x 2.50m (8'2")
Bedroom 1	4.70m (15'5") x 3.00m (9'10")
Bedroom 2	3.60m (11'10") x 3.00m (9'10")
Bedroom 3	3.65m (12') x 3.00m (9'10")
Bathroom	2.45m (8') x 1.70m (5'7")

Gross internal floor area (m<sup>2</sup>): 105m<sup>2</sup> | EPC Rating: C

Extras (Included in the sale): Carpets and floor coverings, light fixtures and fittings, curtains and blinds.

