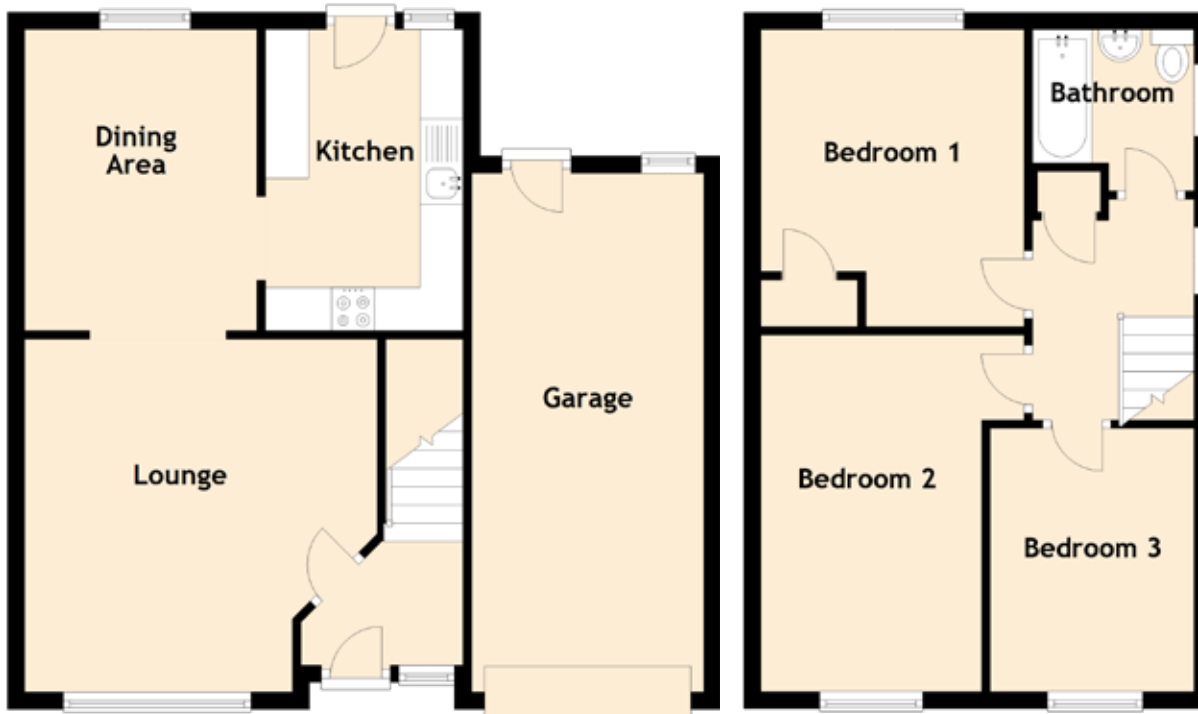


2 Affric Way

CROSSFORD, DUNFERMLINE, KY12 8XZ



Approximate Dimensions
(Taken from the widest point)

Lounge	4.10m (13'5") x 4.10m (13'5")
Dining Area	3.50m (11'6") x 2.70m (8'10")
Kitchen	3.50m (11'6") x 2.30m (7'7")
Garage	6.10m (20') x 2.70m (8'10")
Bedroom 1	3.50m (11'6") x 3.10m (10'2")
Bedroom 2	4.20m (13'9") x 3.10m (10'2")
Bedroom 3	3.30m (10'10") x 2.40m (7'10")
Bathroom	1.90m (6'3") x 1.90m (6'3")

Gross internal floor area (m²): 79m²

EPC Rating: C

Extras (Included in the sale): Floor coverings, light fittings, blinds and window dressings.