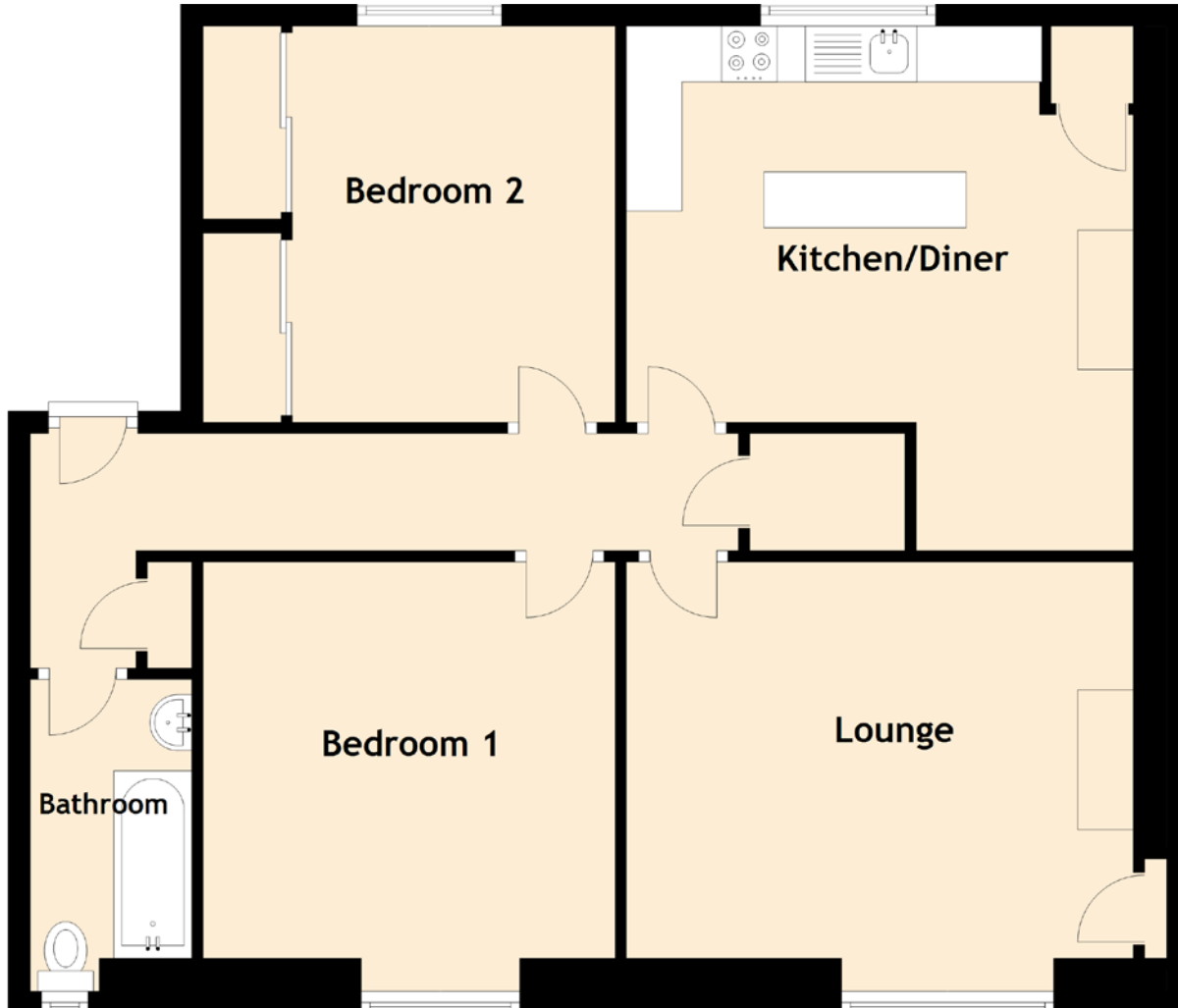


# 93a Victoria Road



**Approximate Dimensions**  
*(Taken from the widest point)*

Kitchen/Diner	4.70m (15'5") x 4.55m (14'11")
Lounge	4.55m (14'11") x 3.55m (11'8")
Bedroom 1	3.70m (12'2") x 3.55m (11'8")
Bedroom 2	3.55m (11'8") x 2.60m (8'6")
Bathroom	2.50m (8'2") x 1.45m (4'9")

Gross internal floor area (m<sup>2</sup>): 78m<sup>2</sup>

EPC Rating: D