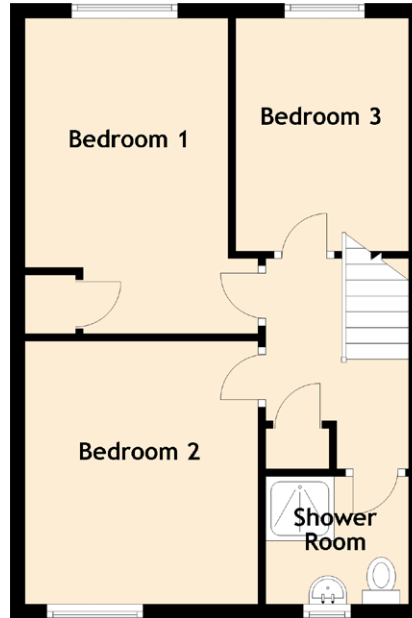
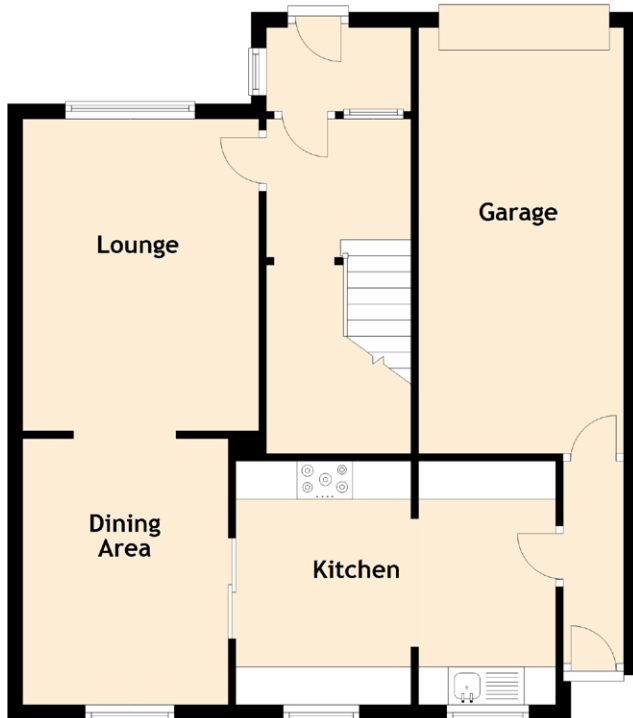


# 7 Mayburn Court

LOANHEAD, MIDLOTHIAN, EH20 9EX



Approximate Dimensions  
(Taken from the widest point)

## GROUND FLOOR

Lounge	4.10m (13'5") x 3.10m (10'2")
Dining Area	3.50m (11'6") x 2.70m (8'10")
Kitchen	4.10m (13'5") x 3.20m (10'6")
Garage	5.60m (18'4") x 2.60m (8'6")

## FIRST FLOOR

Bedroom 1	4.20m (13'9") x 2.70m (8'10")
Bedroom 2	3.50m (11'6") x 3.10m (10'2")
Bedroom 3	3.10m (10'2") x 2.30m (7'7")
Shower Room	1.90m (6'3") x 1.70m (5'7")

Gross internal floor area (m<sup>2</sup>): 87m<sup>2</sup>

EPC Rating: C