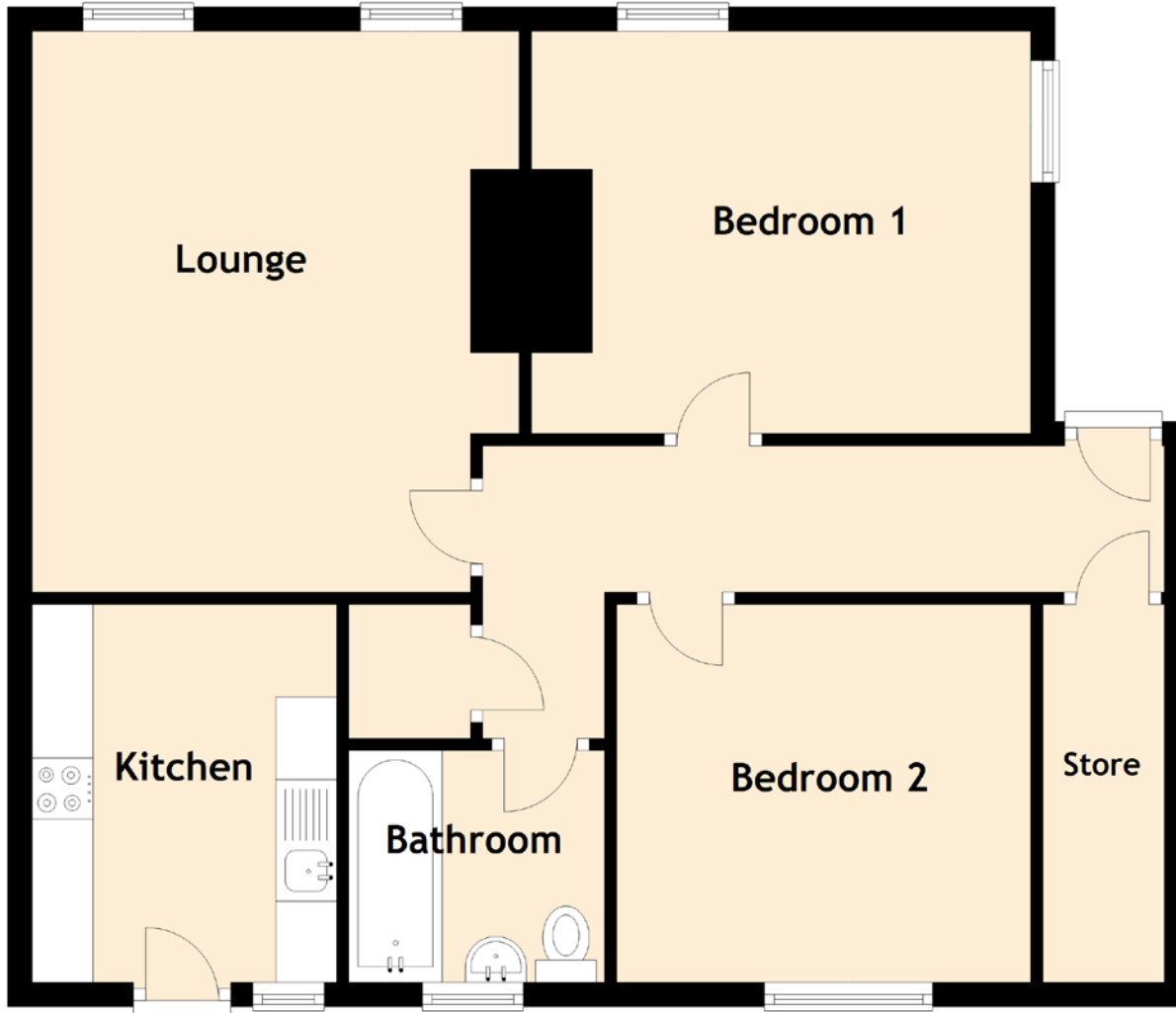


# 21 Louise Street

DUNFERMLINE, FIFE, KY11 4AT



Approximate Dimensions  
(Taken from the widest point)

Lounge	4.60m (15'1") x 4.00m (13'1")
Kitchen	3.10m (10'2") x 2.50m (8'2")
Bedroom 1	4.10m (13'5") x 3.30m (10'10")
Bedroom 2	3.50m (11'6") x 3.10m (10'2")
Bathroom	2.10m (6'11") x 1.90m (6'3")

Gross internal floor area (m<sup>2</sup>): 70m<sup>2</sup>

EPC Rating: C